

SANDY SPRINGS

Transportation Master Plan

VIRTUAL WEBINAR

June 18, 2020

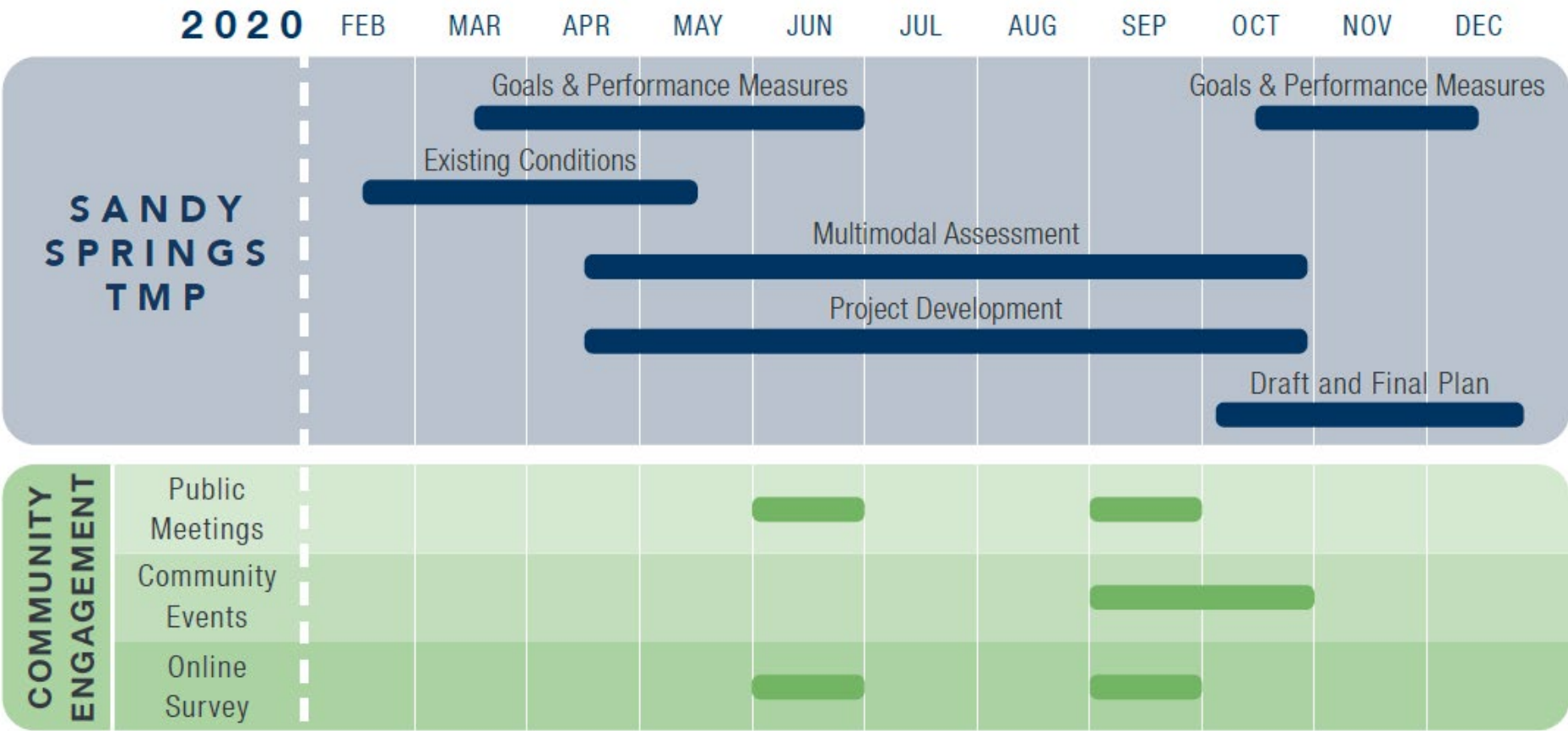


Agenda and Overview

- Sandy Springs Today
- Preliminary Project Goals
- Catch Phrase Activity
- Introduce Online Survey
- Next Steps



The Planning Process



EXISTING CONDITIONS REPORT
SANDY SPRINGS TODAY



Context



Employment



Mobility



People



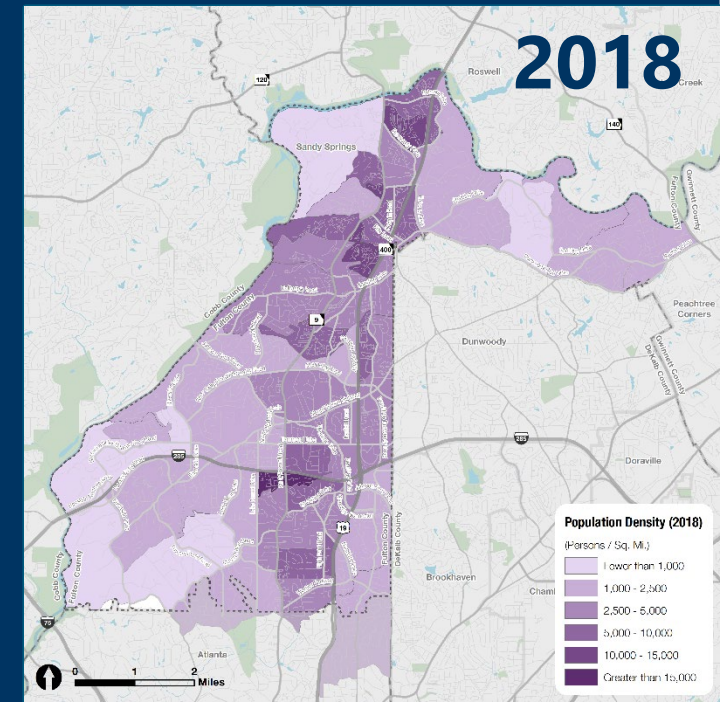
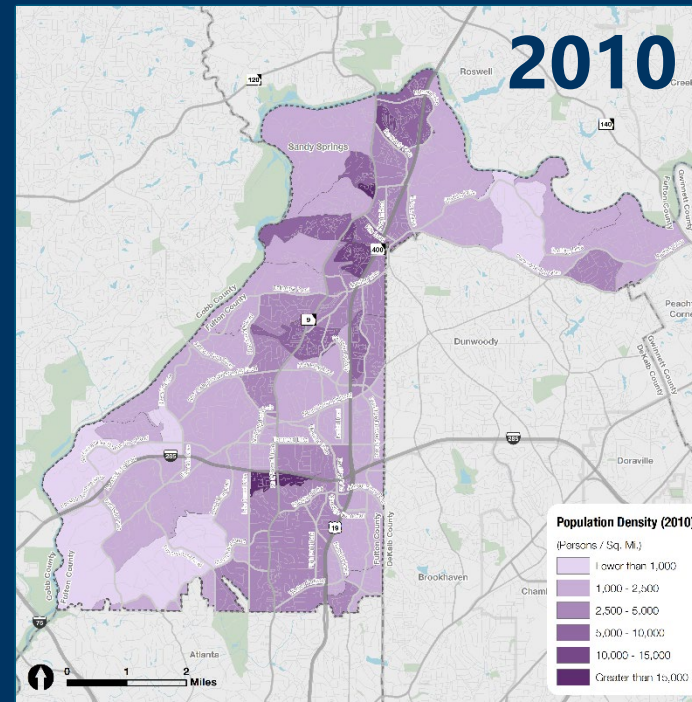
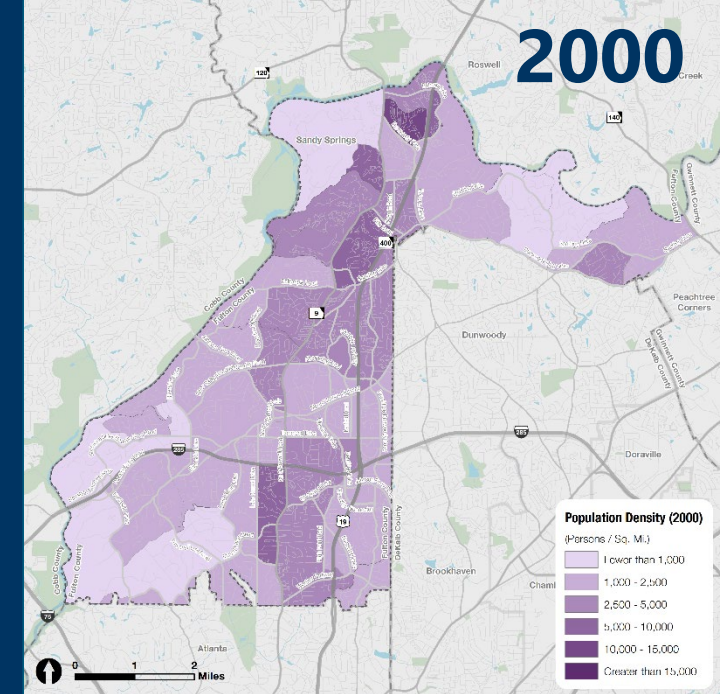
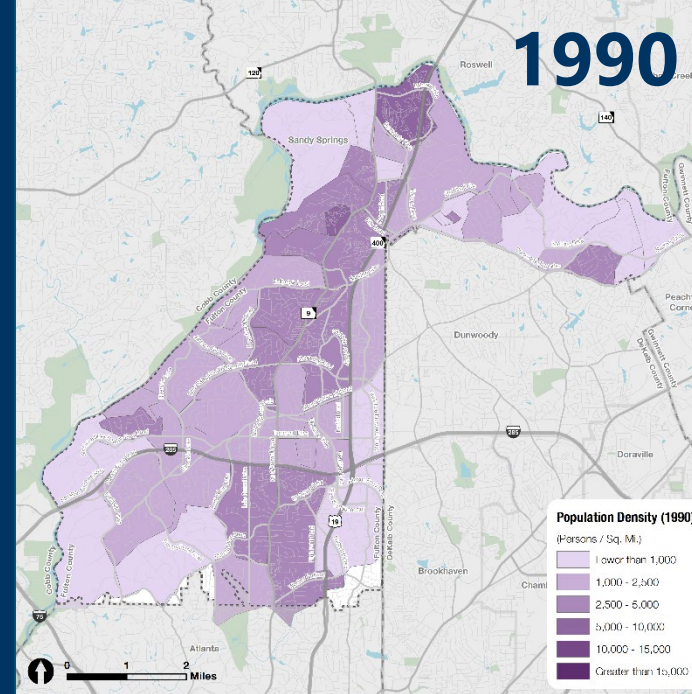
Land Use



Population Growth

Between 1990 and 2018, the population of Sandy Springs grew by approximately 60%. In the future, the City will still grow, but more slowly than before.

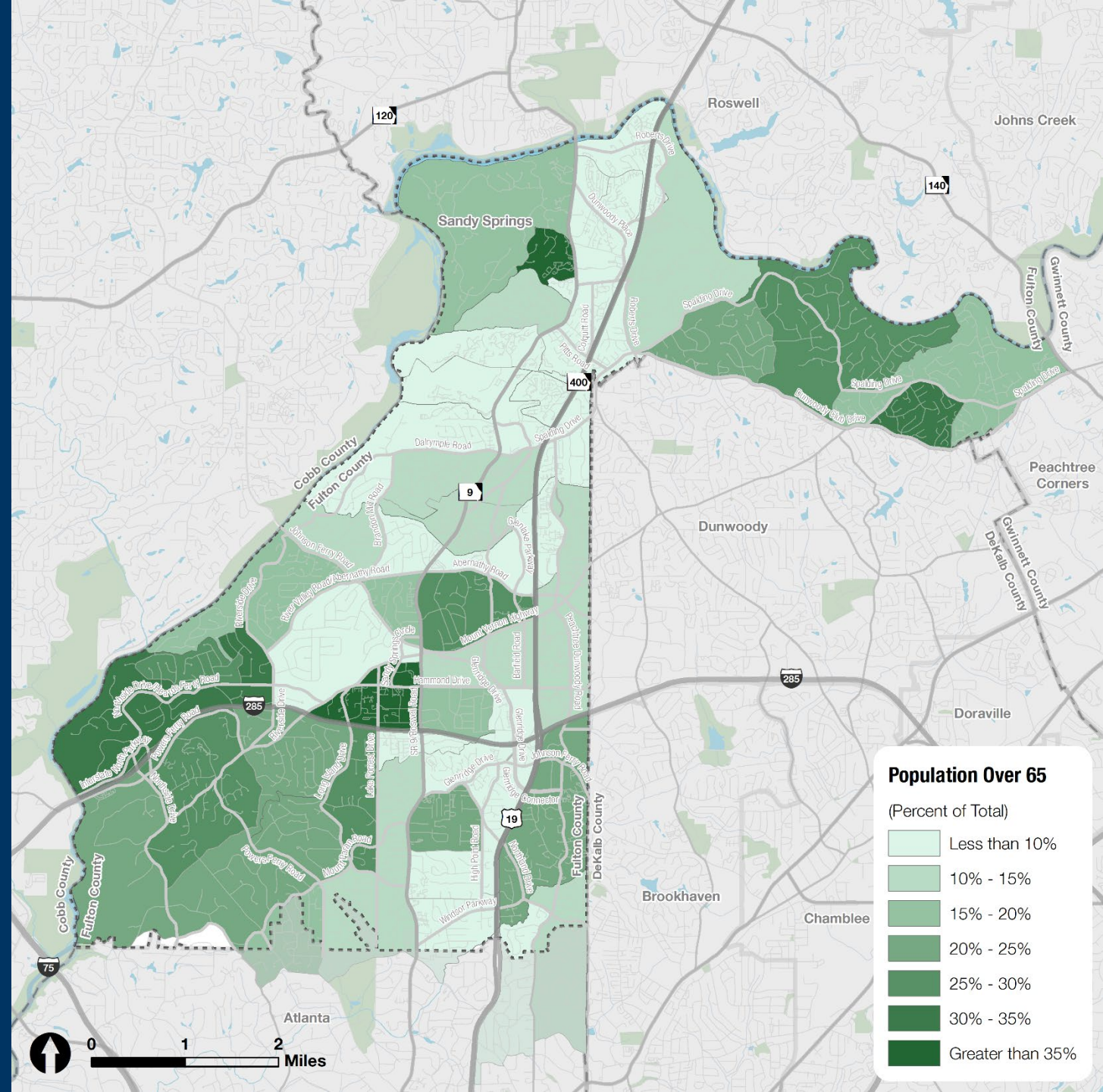
Between now and 2050, annual population growth in Sandy Springs is expected be about 0.6% annually (vs. Fulton County at 1.1%).



Aging Population

Almost one-third of Sandy Springs residents are 50 years or older.

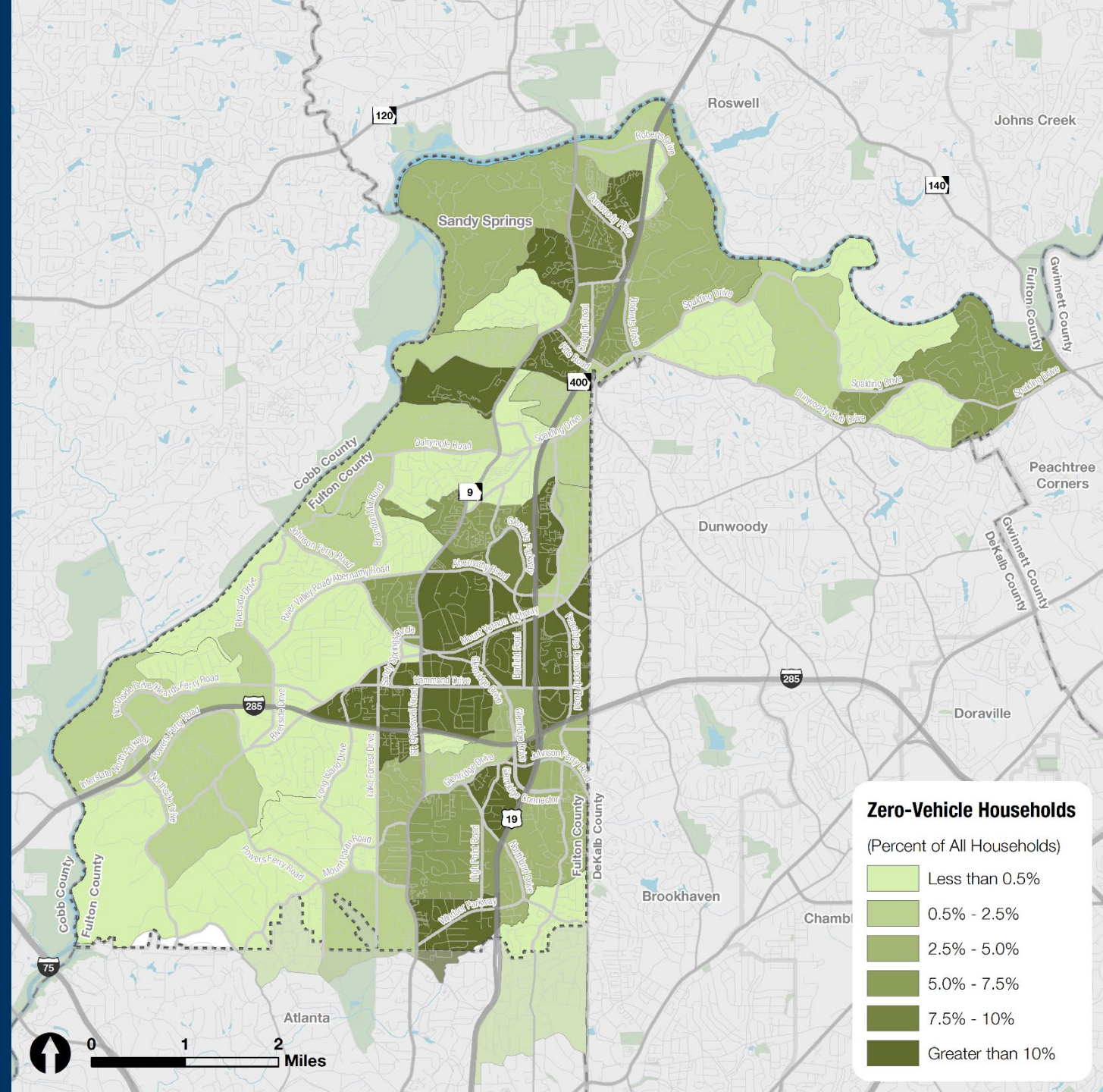
Compared to the rest of Fulton County, the City also has a higher proportion of late career professionals (ages 50 – 64) and senior citizens (age 65 or older).



Zero-Vehicle Households

1 in every 15 households have no access to a personal vehicle (~3,000 households)

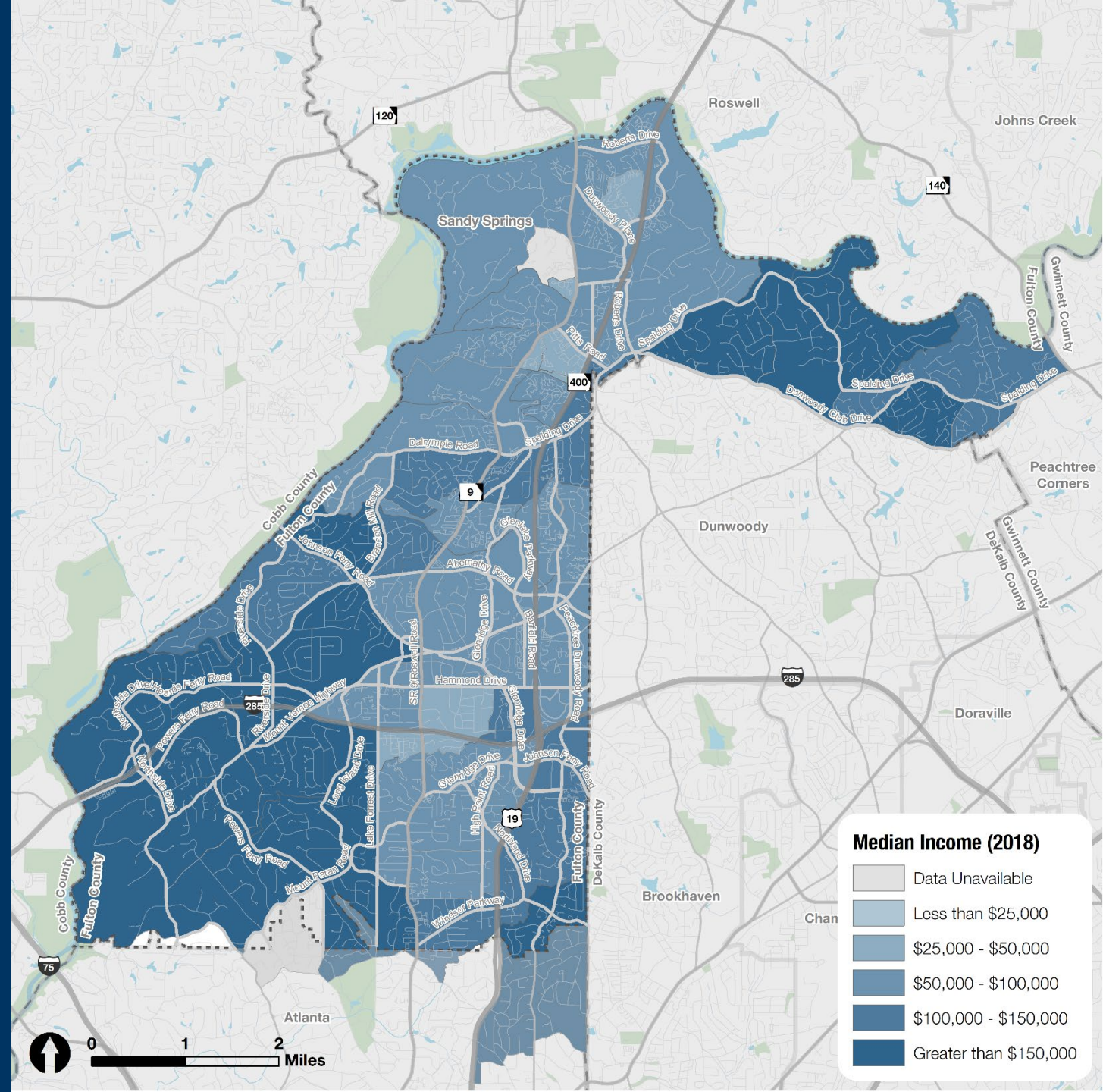
These households are primarily located in the central portion of the city.



Education and Income

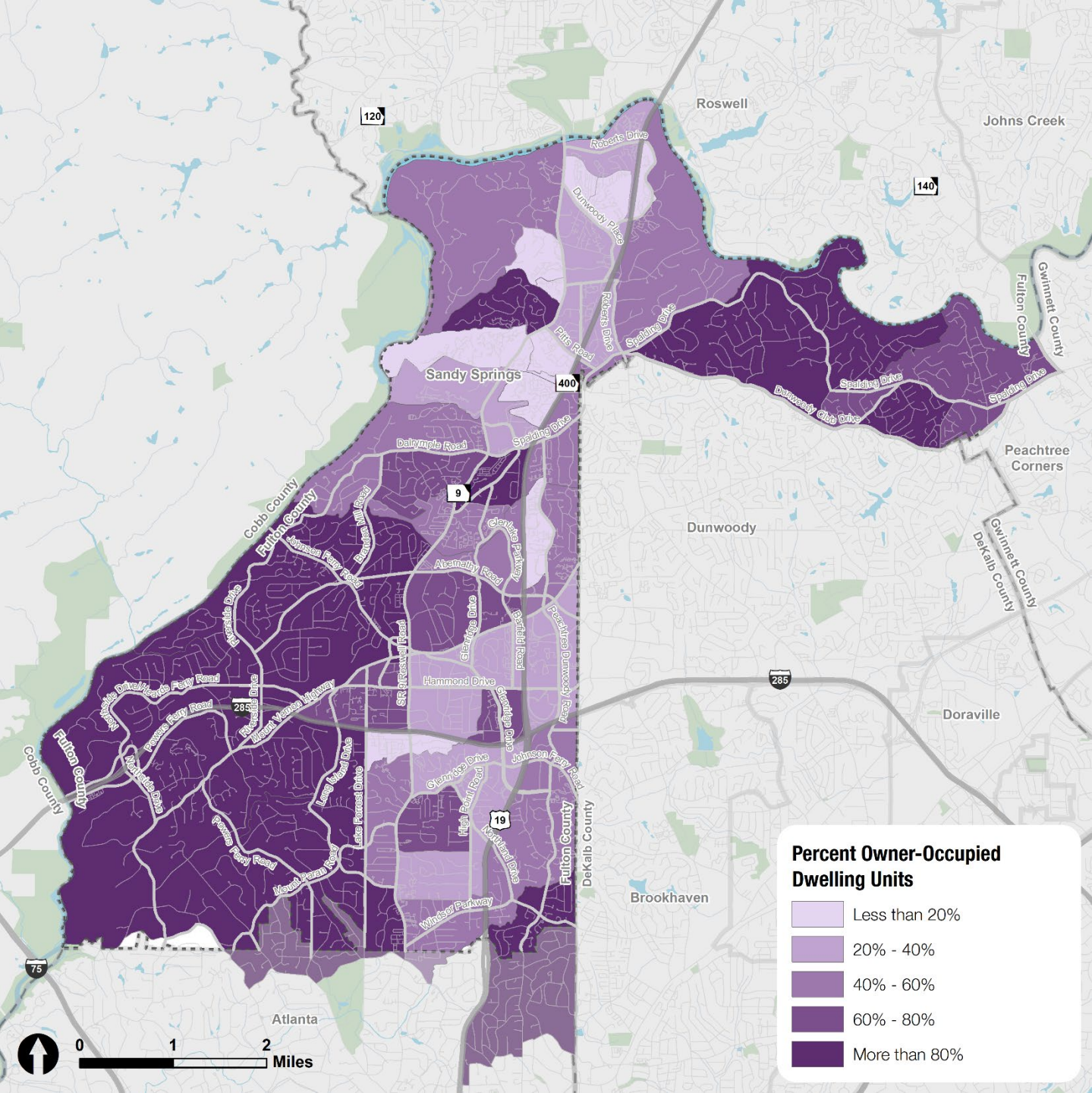
Almost two-thirds of Sandy Springs residents over age 25 have completed a four-year college degree or higher.

High levels of educational attainment typically correlate with high median incomes, and while this is certainly true in Sandy Springs – almost 10% of the population lives under the poverty threshold.



Renters and Owners

Sandy Springs is split almost evenly between renters and owners.



Context



Employment



Mobility



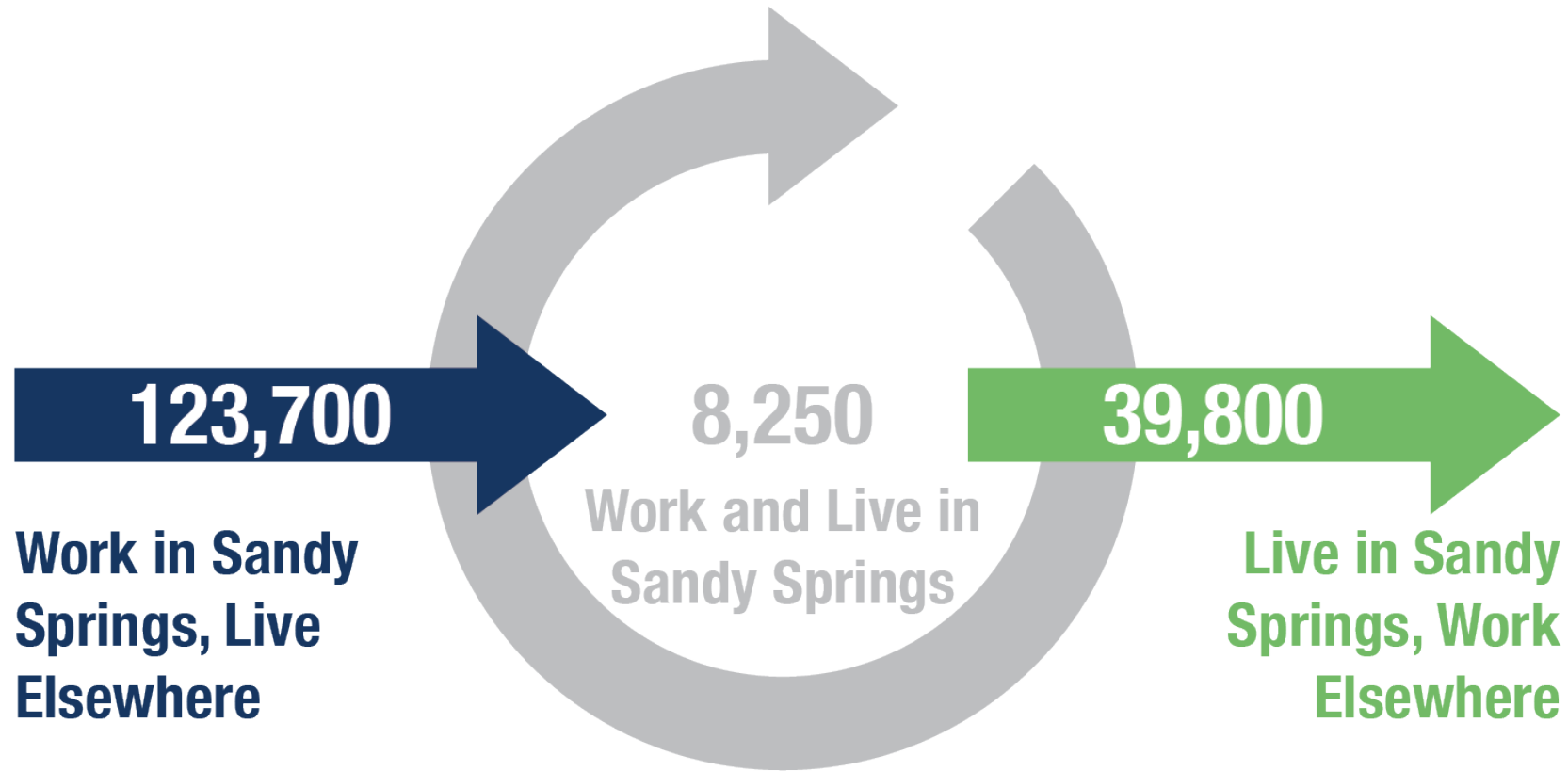
People



Land Use

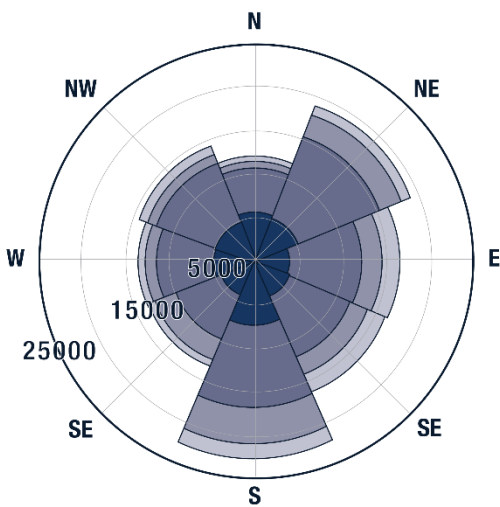


Sandy Springs is a Regional Employment Destination

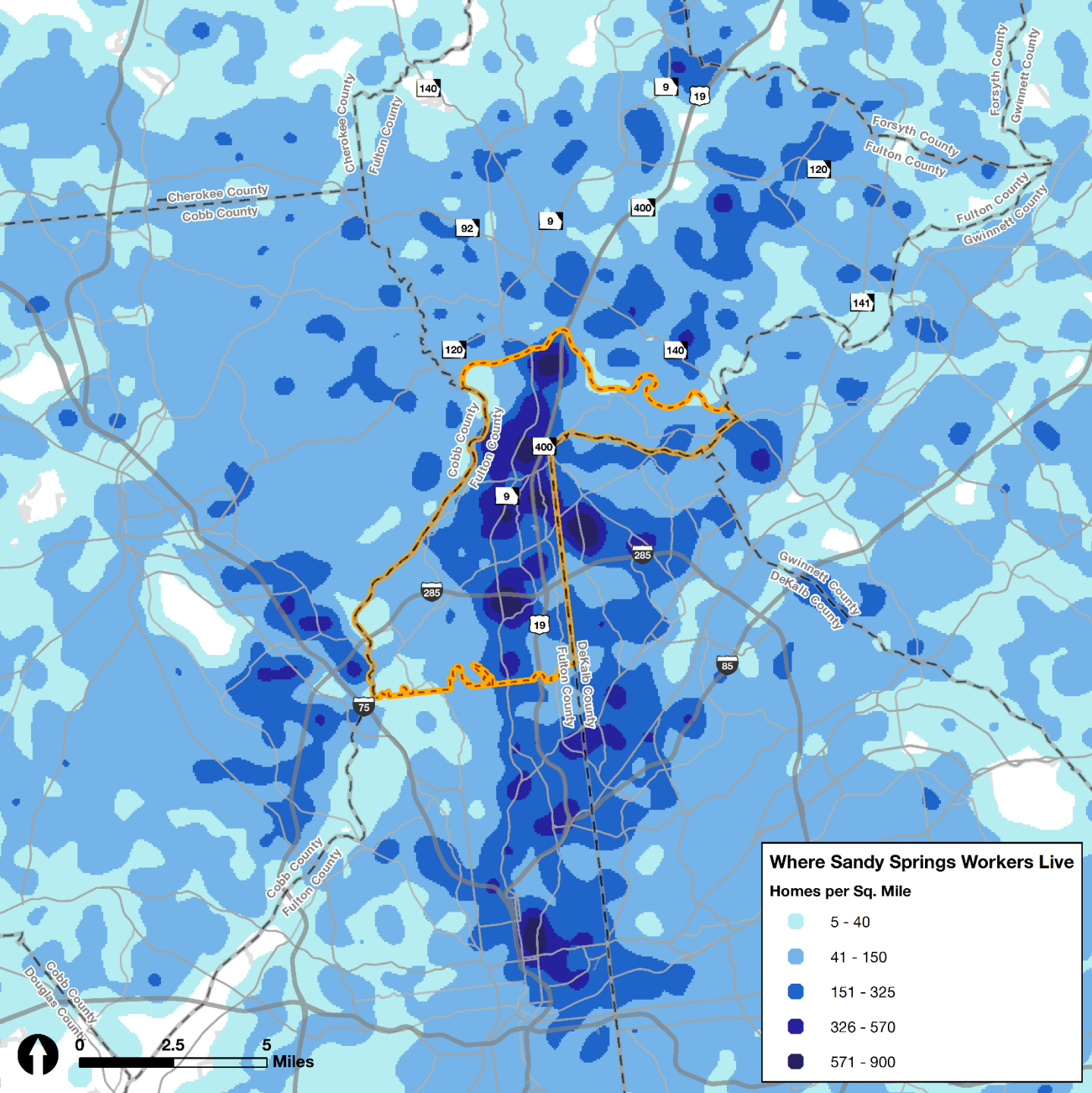
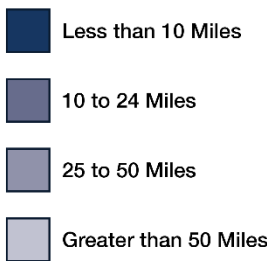


Where Sandy Springs Workers Live

Most workers in Sandy Springs live along GA 400; or in nearby Dunwoody, Atlanta, or Cumberland.

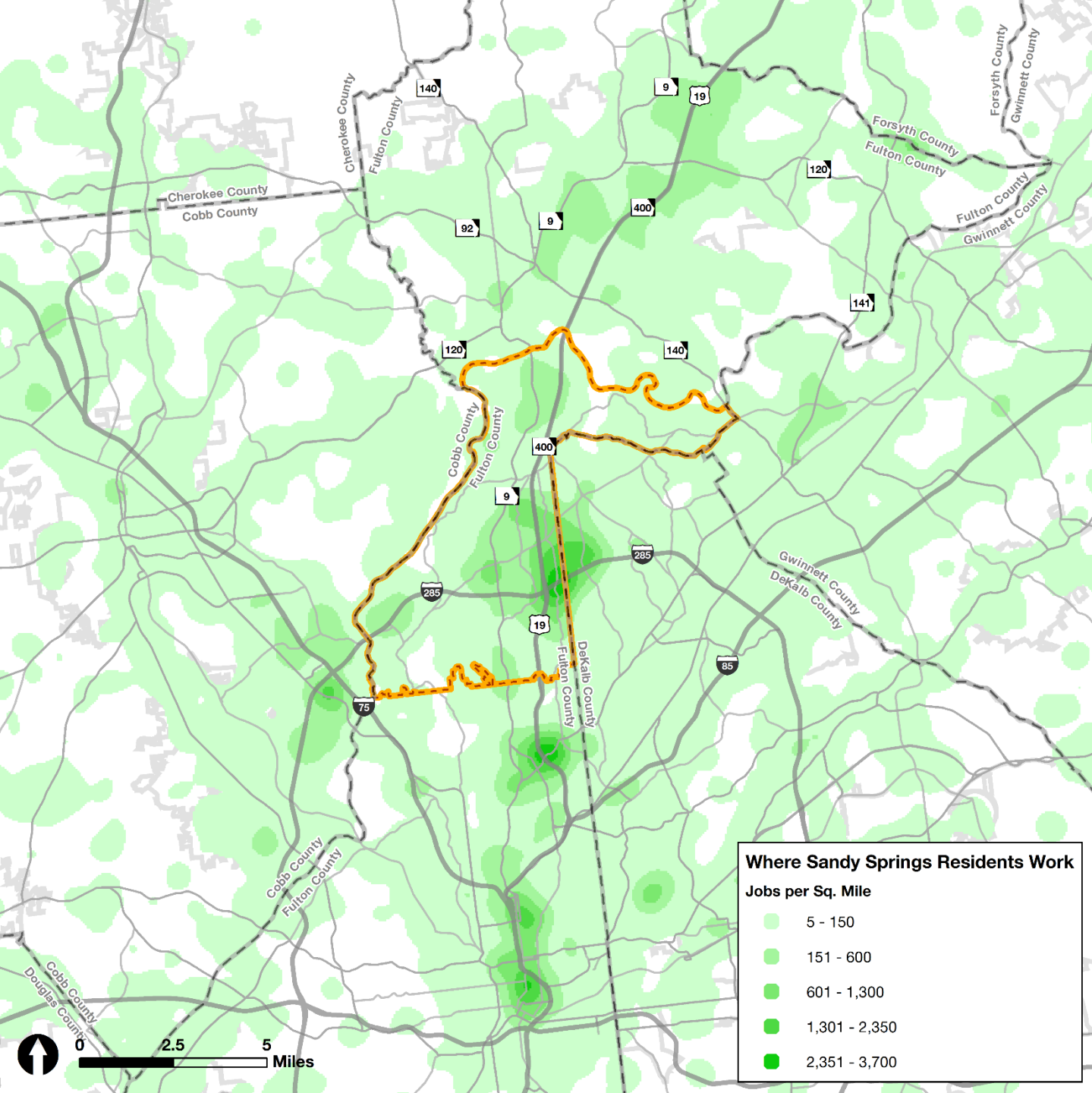
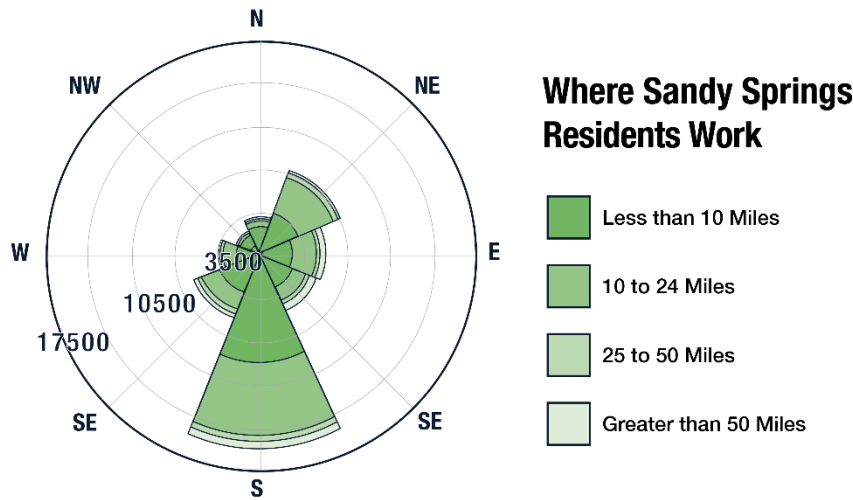


Where Sandy Springs Workers Live



Where Sandy Springs Residents Work

Most Sandy Springs residents work south of the City, in other major employment destinations such as Buckhead, Emory, Midtown, or Downtown Atlanta.



Context



Employment



Mobility



People



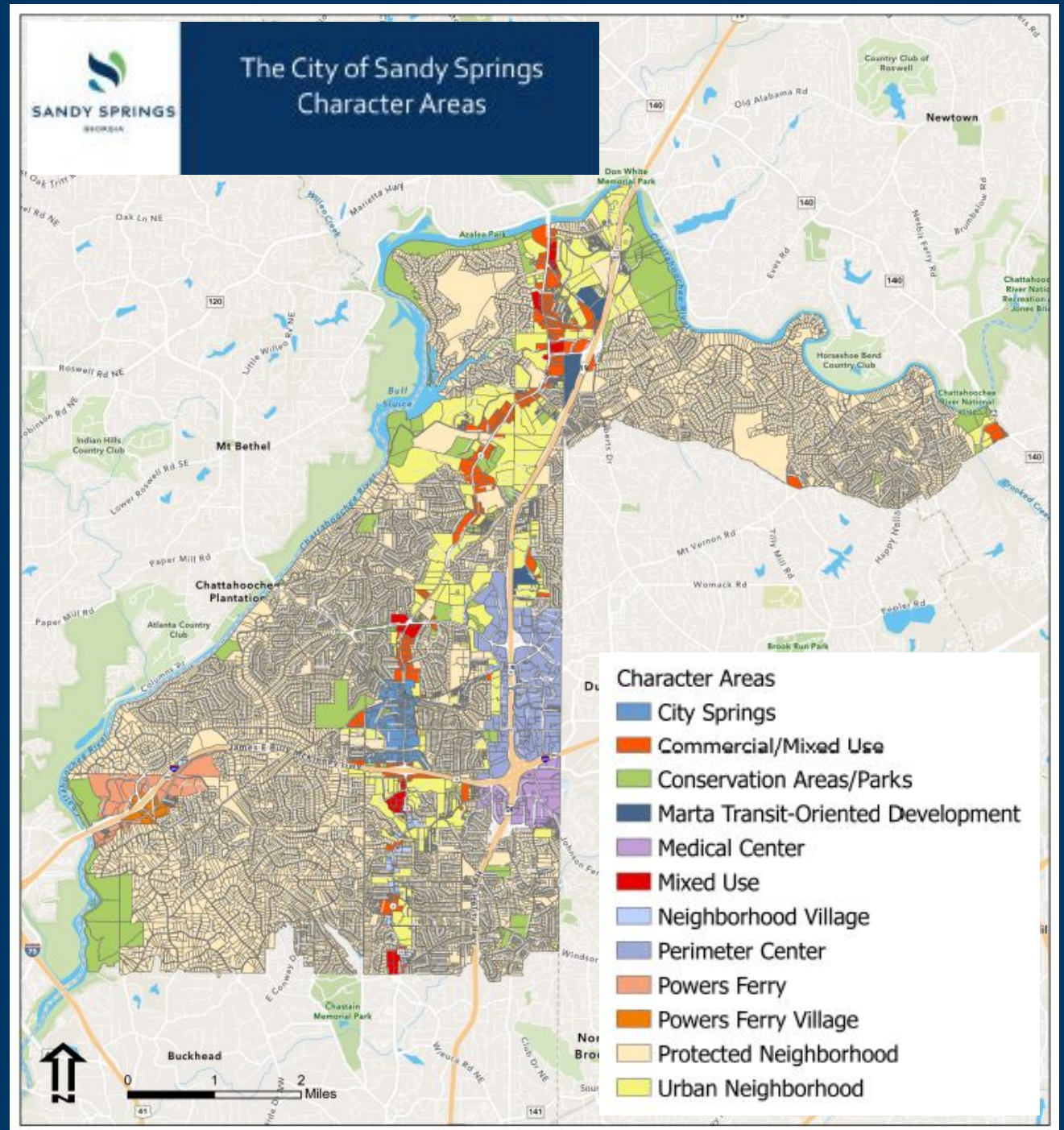
Land Use



Character Areas

Sandy Springs grew out of a bedroom community for Atlanta, and existing land uses in most of the City is still influenced by this neighborhood-based heritage.

Future land use changes are guided by *The Next Ten* plan adopted in 2017. The plan does not enable growth everywhere but focuses growth in areas that will lead to targeted, distinctive destinations. The map was updated June 2020.



Context



Employment



Mobility



People



Land Use



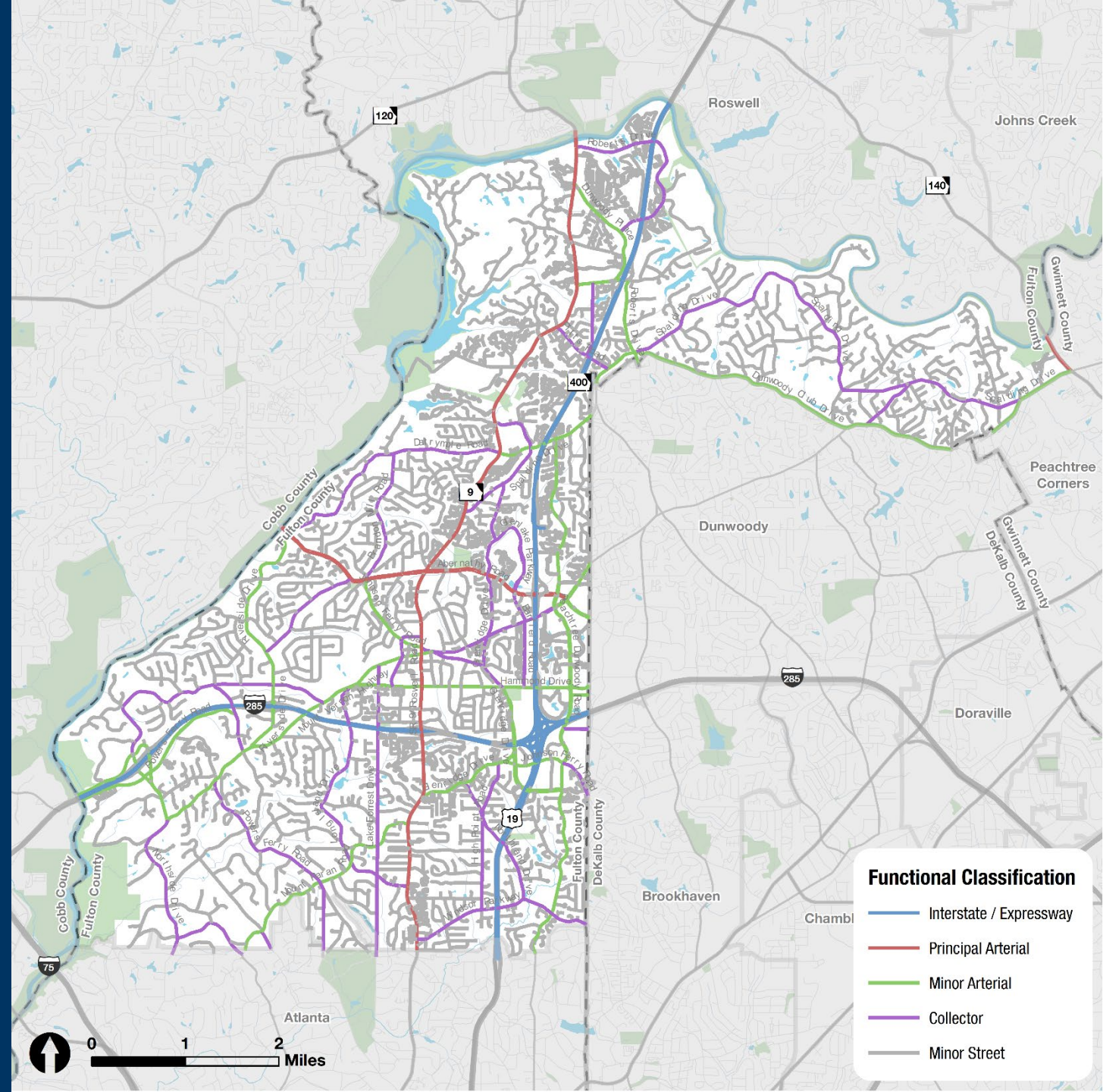
Roadway Types

Each roadway type plays a vital role in the overall transportation network. The characteristics of the roadway determine its function classification.

Almost 75% of total roadway-miles in Sandy Springs are local facilities.

Roswell Road and Abernathy Road carry the highest volume of vehicles on the local road network.

However, when combined, I-285 and GA 400 carry more traffic than any other class of roadway in Sandy Springs.

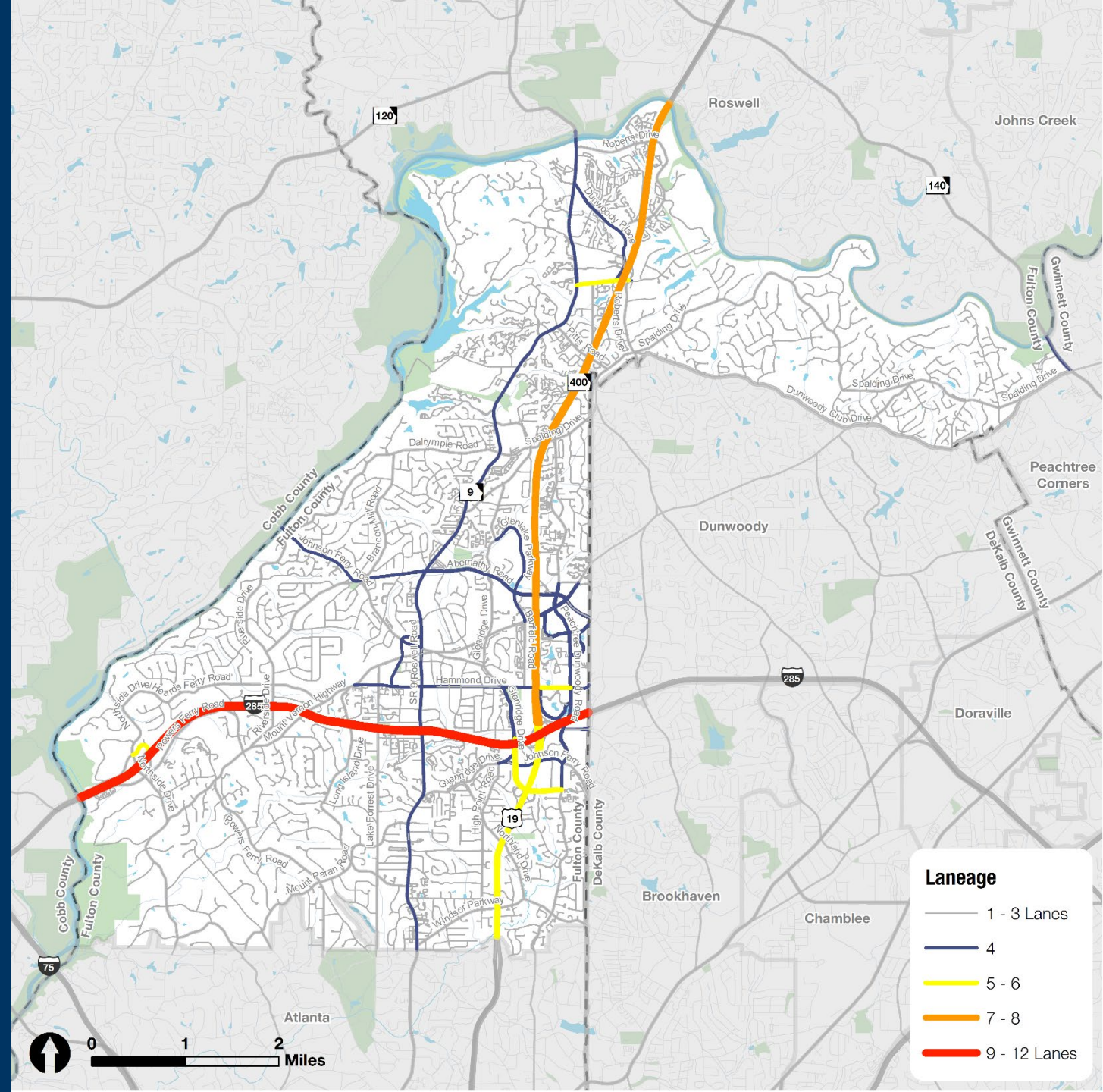


Laneage

A few major corridors carry most of the vehicular traffic in Sandy Springs.

For streets classified above "minor",

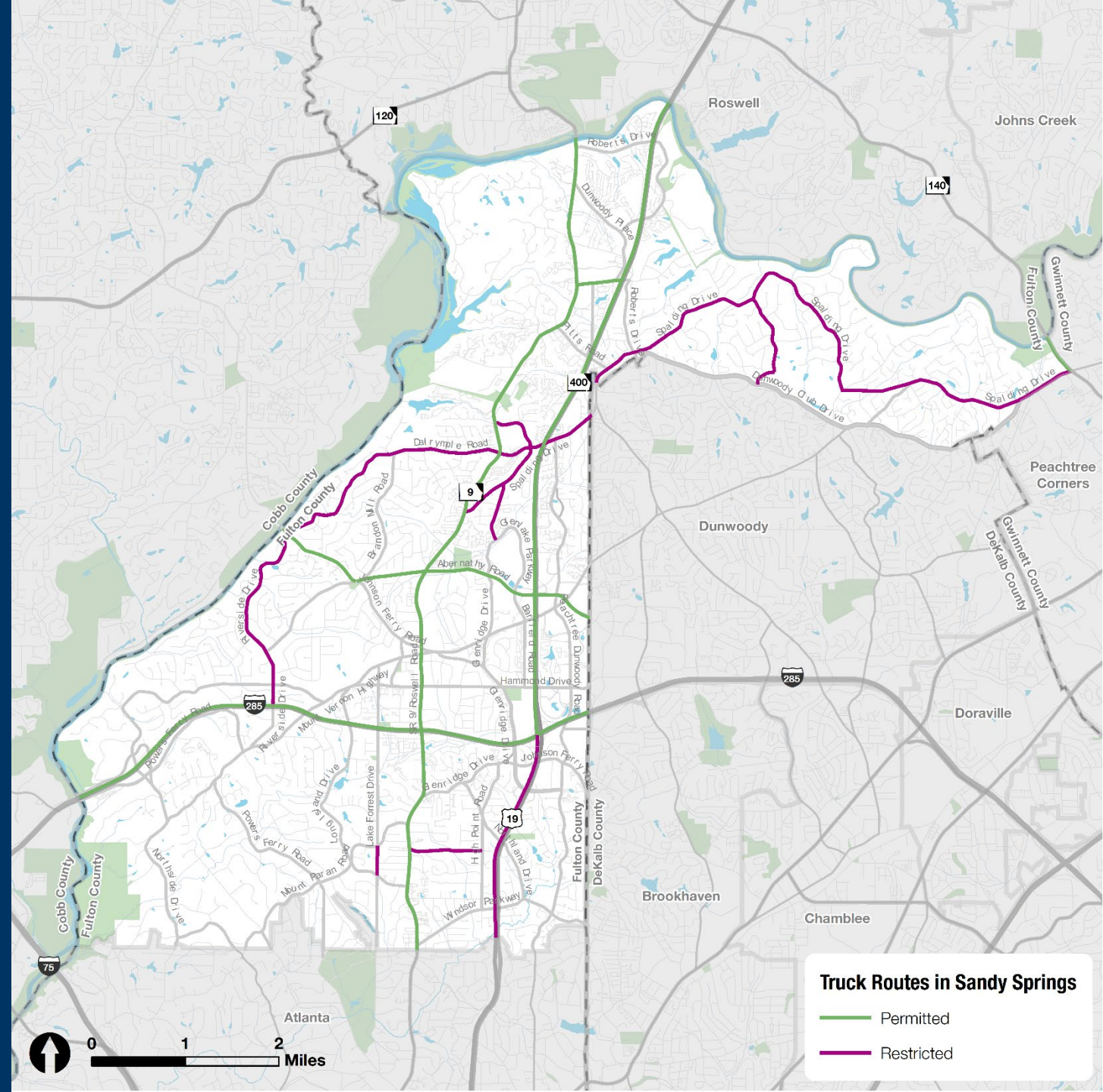
- 50% of lane-miles are two-lane facilities.
- 15% of lane-miles are four-lane roadways.
- 35% of lane-miles include roadways wider than four lanes.



Freight Network

Sandy Springs is at the crossroads of two regional truck routes – I-285 and GA 400. Roswell Road adds redundancy to the north-south truck movements within Sandy Springs.

There is restricted truck access along GA 400 south of I-285 heading into the City of Atlanta. Trucks are not permitted to enter I-285 unless they are delivering to a specific place located inside I-285.



Crash History: Overview

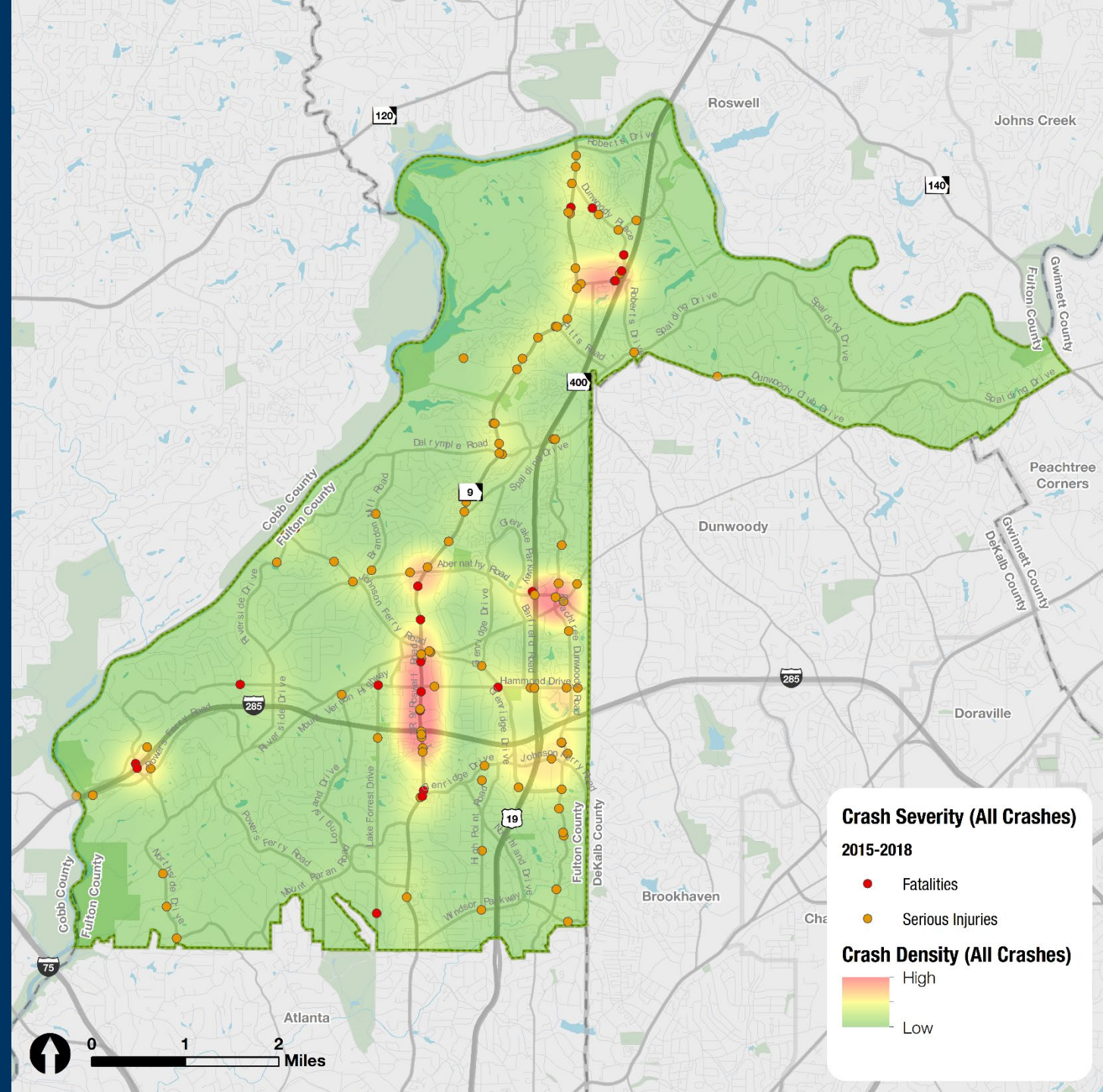
Almost 70% of all surface-street crashes in Sandy Springs between 2015-2019 occurred on one of ten corridors.

More than 25% of all surface-street crashes occurred on Roswell Road.

Corridor	Crashes	Percent of Total
Roswell Road	5,140	28%
Peachtree Dunwoody Road	1,457	8%
Abernathy Road	1,263	7%
Hammond Drive	965	5%
Johnson Ferry Road	861	5%
Northridge Road	674	4%
Glenridge Drive	651	4%
Mount Vernon Highway	622	3%
Dunwoody Place	563	3%
Riverside Drive	385	2%

Crash History: Serious Crashes

Between 2015-2019, a total of 119 crashes on surface streets in Sandy Springs resulted in a serious injury or fatality.



Technology Integration

Sandy Springs has invested in a robust Intelligent Transportation System (ITS) network to maximize the usage of existing transportation facilities.



132
Traffic Signals



43 Miles
of Fiber-Optic Cable



85
CCTV Cameras



45
Cellular Modems

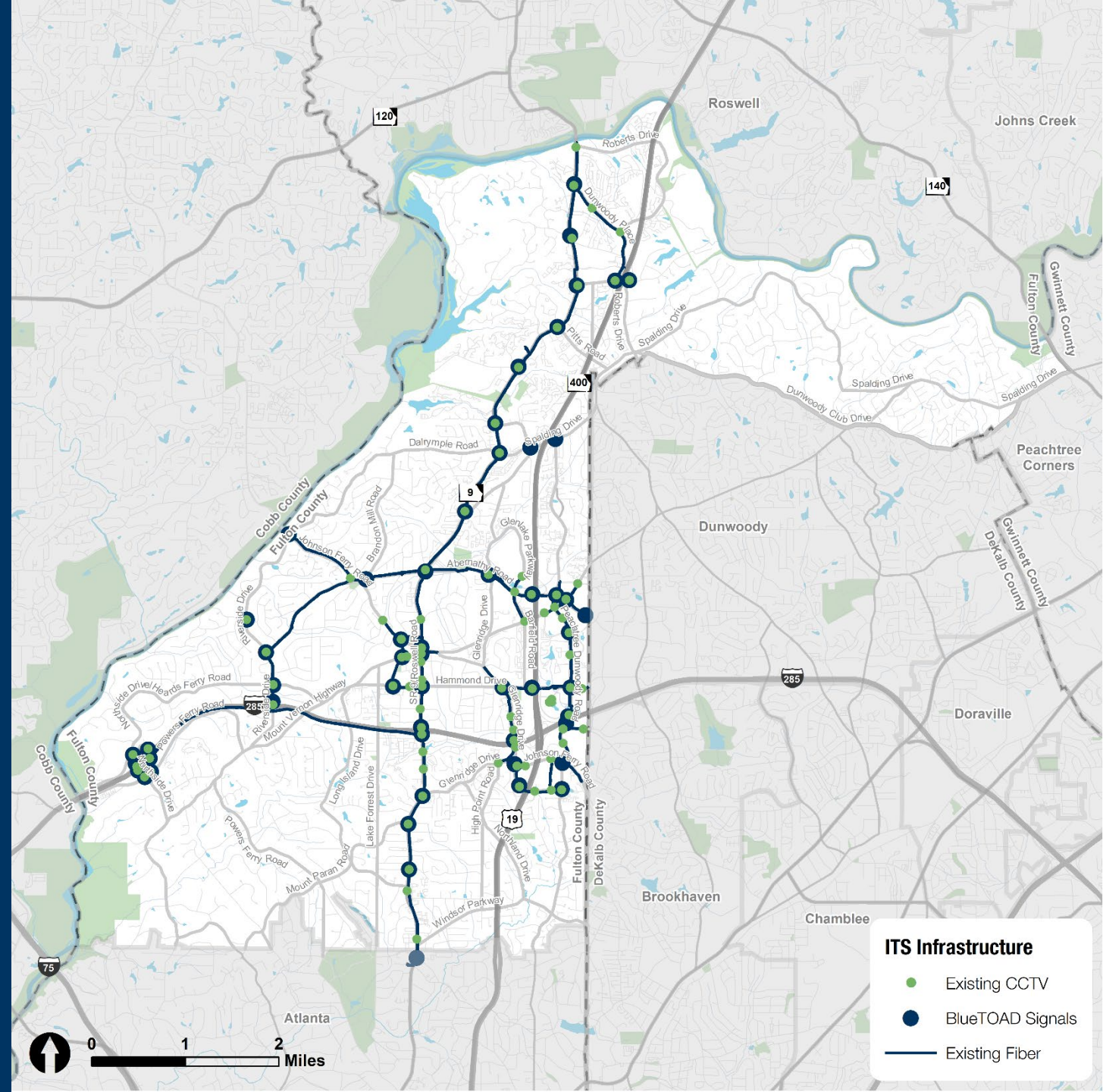


54
Bluetooth Nodes



6
Wireless Radios

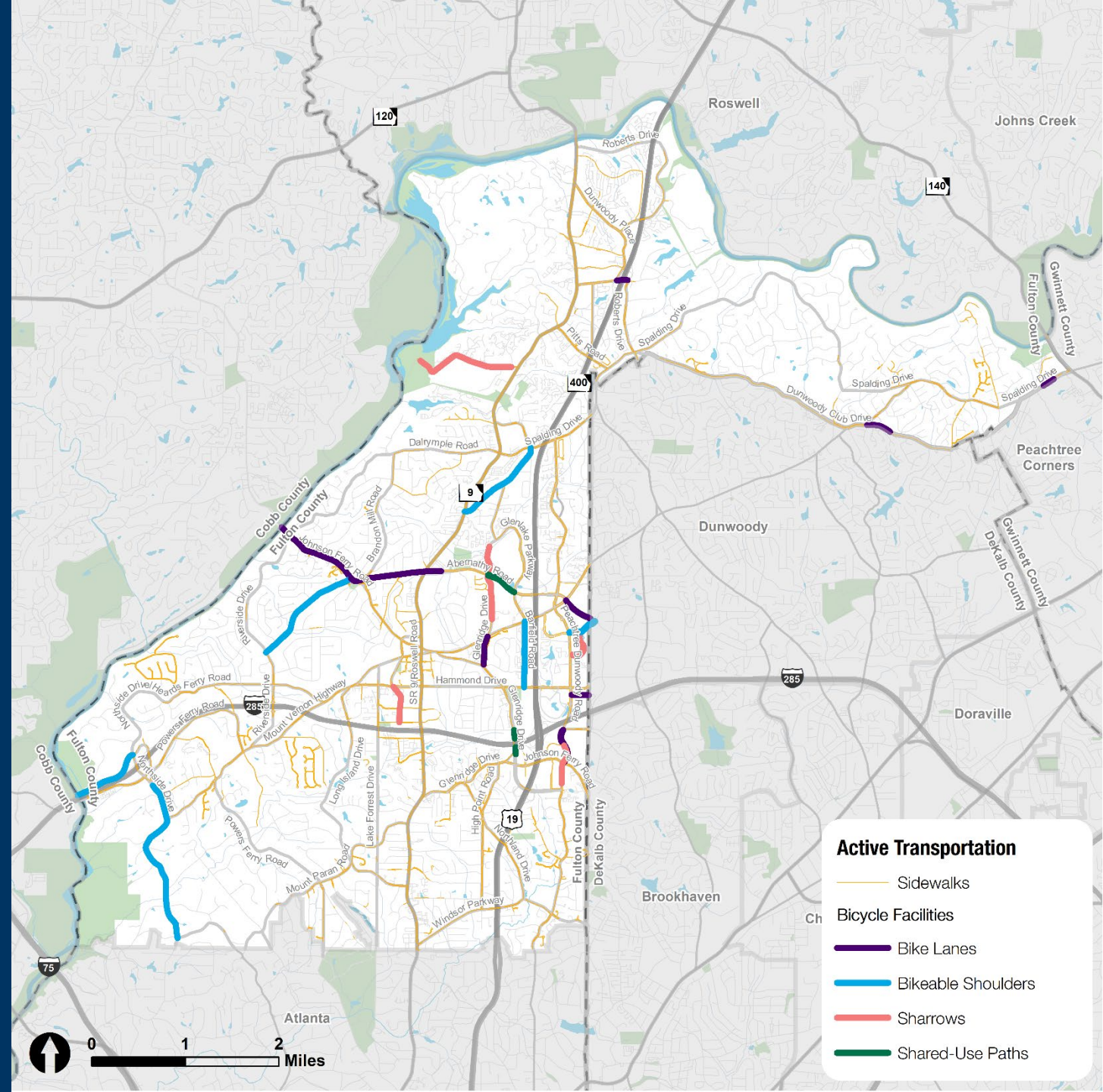
These investments position Sandy Springs as a regional leader in implementing emerging mobility technologies.



Active Transportation

The active transportation network in Sandy Springs includes sidewalks, bike lanes, bikeable shoulders, and sharrows.

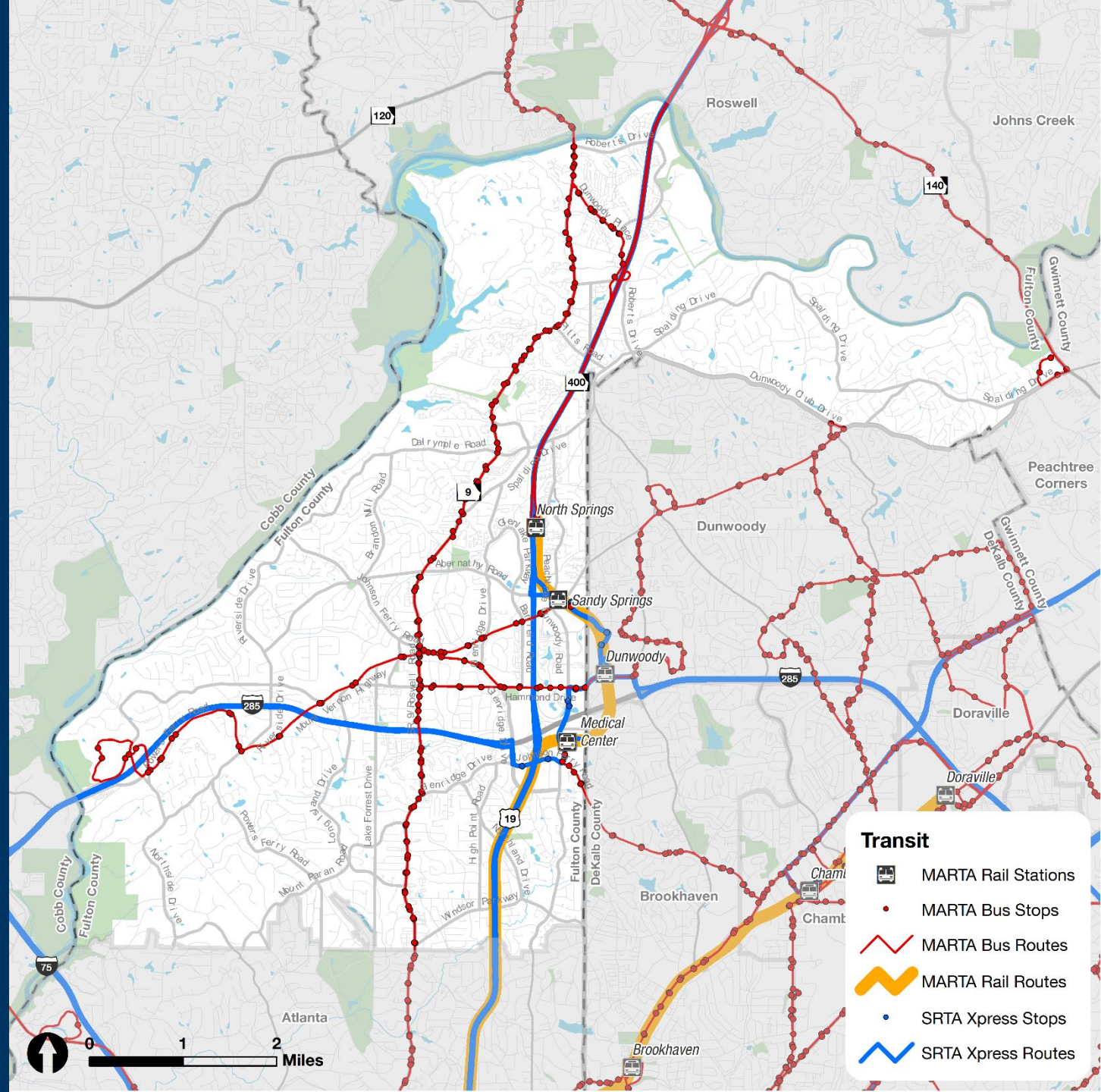
The existing network is focused on a few major corridors and the Perimeter Center area. There are several programmed projects such as side paths on Mount Vernon Highway, Path 400 Extension, and side paths on Interstate North Parkway.



Transit

Sandy Springs is served by several transit modes through MARTA, Xpress, and Perimeter Shuttles.

Xpress provides commuter-focused bus service to Sandy Springs from park-and-rides in Town Center, Cumming, Sugarloaf Mills, and Stonecrest.



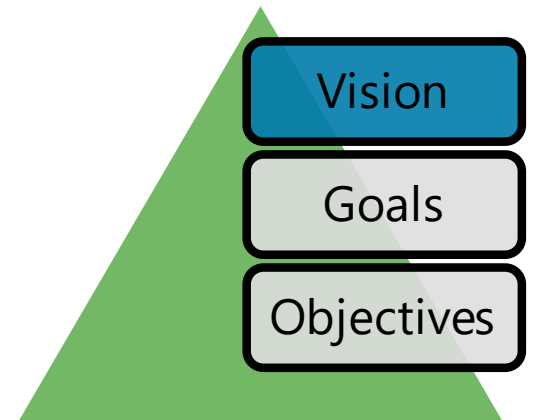
PROJECT GOALS

PRELIMINARY OVERVIEW



Goals vs. Objectives

- Goals
 - This is our desired result that we want to achieve in the long-term
 - Altogether, the TMP goals establish the vision and purpose of the planning effort and transportation priorities moving forward.
- Objectives
 - This identifies specific actions or targets (qualitative or quantitative) that highlight how the goal is achieved.



Preliminary Goals

- **Safety**
 - Promote a safer transportation system for users of all modes
- **Mobility & Accessibility**
 - Promote an interconnected and efficient transportation network
- **Economic Vitality**
 - Promote economic development through targeted transportation investments
- **Land Use & Transportation Integration**
 - Transportation system is context sensitive and supports surrounding land use
- **Maintain & Optimize System**
 - Reinforce, maintain, and strengthen the existing transportation network
- **Well-Being & Environment**
 - Support healthy living through quality connections to the built and natural environments



SANDY SPRINGS

Transportation Master Plan

CATCH PHRASE ACTIVITY
VISIT MENTI.COM
AND INPUT CODE 47 53 52

(CATCH PHRASE ACTIVITY IS ONLY AVAILABLE DURING THE VIRTUAL MEETING. PARTICIPANTS CAN COMPLETE A SIMILAR ACTIVITY THROUGH THE ONLINE SURVEY.)

SANDY SPRINGS

Transportation Master Plan

ONLINE SURVEY

VISIT

[HTTPS://SANDYSPRINGSTMP.METROQUEST.COM](https://sandyspringstmp.metroquest.com)

Metroquest: Introduction

The screenshot shows a digital interface for a survey. At the top left, a dark blue header contains a back arrow and the word "Welcome". Below this, a vertical sidebar on the left is labeled "INTRODUCTION" and features a question mark icon at the bottom. The main content area has a background image of a city skyline with a prominent domed building. A white text box in the upper center reads: "Have Your Say on Transportation in Sandy Springs. Sandy Springs is updating its Transportation Master Plan (TMP), and we want to hear from you! The plan will recommend projects that improve safety, mobility, and access for all users in the City." To the right of this text is a green "Begin" button with a right arrow. At the bottom left of the main area, a semi-transparent box states: "This survey will take approximately 10 minutes to complete." At the bottom right, there is a logo for "SANDY SPRINGS GEORGIA" and another logo for "SANDY SPRINGS Transportation Master Plan". On the right side of the screen, a vertical navigation bar contains five items: "2 PROJECT GOALS" (green), "3 CATCH PHRASE" (blue), "4 MAP IT" (light blue), "5 STAY INVOLVED" (grey), and a speech bubble icon at the bottom.

✓ Welcome

INTRODUCTION

Have Your Say on Transportation in Sandy Springs

Sandy Springs is updating its Transportation Master Plan (TMP), and we want to hear from you! The plan will recommend projects that improve safety, mobility, and access for all users in the City.

[Begin](#)

This survey will take approximately 10 minutes to complete.

SANDY SPRINGS
GEORGIA

SANDY SPRINGS
Transportation Master Plan

2 PROJECT GOALS

3 CATCH PHRASE

4 MAP IT

5 STAY INVOLVED

Metroquest: Project Goals

INTRODUCTION

PROJECT GOALS

Rank your top priorities

1 Safety

2 Well-Being & Environment

3 Economic Vitality

Order your top 3 items above this line

Maintain/Optimize System

Mobility & Accessibility

Land Use & Transportation

Suggest another

What to do

Next Task

3 CATCH PHRASE

4 MAP IT

5 STAY INVOLVED

Economic Vitality



Promote economic development through targeted transportation investments

Examples: create a pleasant walking environment in commercial and mixed use areas, improve access to transit

Metroquest: Catchphrase

INTRODUCTION

PROJECT GOALS

CATCH PHRASE

3

What should the goals capture?

What to do

Next Task

Safety

Well-Being & Environment

Economic Vitality

Well-Being & Environment

Input the top word or phrase related to well-being & environment you'd like the transportation goals to reflect.

Type...

Input the second word or phrase related to well-being & environment you'd like the transportation goals to reflect.

Type...

MAP IT

STAY INVOLVED

4

5

?

Next

Metroquest: Map It

INTRODUCTION

PROJECT GOALS

CATCH PHRASE

MAP IT

?

4 Identify improvement locations

What to do

Next Task

5 STAY INVOLVED

M

Please drag and drop at least 3 markers on the map.


Roadway

Transit

Pedestrian

Bicycle

Other



Metroquest: Your Travel Habits

INTRODUCTION

PROJECT GOALS

CATCH PHRASE

MAP IT

5 Your travel habits

What to do?

Final Questions

What is your age?
Select...

How do you travel today?
Select...

How would you like to travel in the future?
Select...

What is your home ZIP code?
Type...

What is your work or school ZIP code?
Type...

Email for Project Updates (Optional)
Type...

Submit Final Questions

Skip

Thank You!

Your private information will be kept confidential.

Learn more about the project here: <http://spr.gs/tmp>

SANDY SPRINGS
Transportation Master Plan

f

Next Steps

- **MetroQuest Survey:** <https://sandyspringstmp.metroquest.com>
 - Survey Open: June 18th – July 14th
- **Finalize the Existing Conditions Report**
- **Ongoing Multimodal Assessment**
- **Visit the Project Website:** <http://spr.gs/tmp>
 - All material from this meeting will be posted on the website
- **Contact Us:**
 - Caitlin Shankle, Transportation Planner – tmp@sandyspringsga.gov



SANDY SPRINGS

Transportation Master Plan

THANK YOU

