

TRANSPORTATION MASTER PLAN

January 28, 2021



Housekeeping

- All attendees are in listen only mode.
- Please ask questions or report technical issues through the Q&A box.
 - We will follow-up with you if we aren't able to answer your question today.
- This presentation will be recorded and posted on the City's website.

La Presentación en Español

Contáctenos a tmp@sandyspringsga.gov. Nosotros responderemos por correo electrónico o una llamada para explicar los proyectos y la presentación de hoy en español.

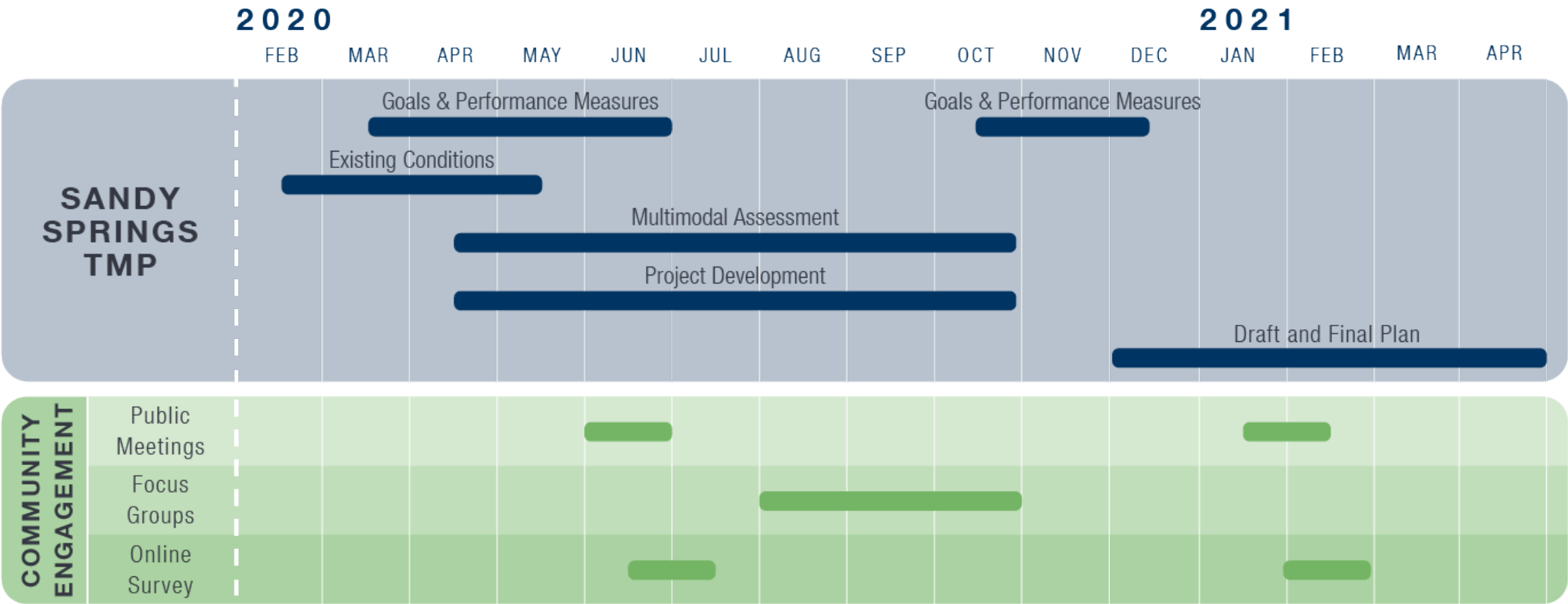


Agenda

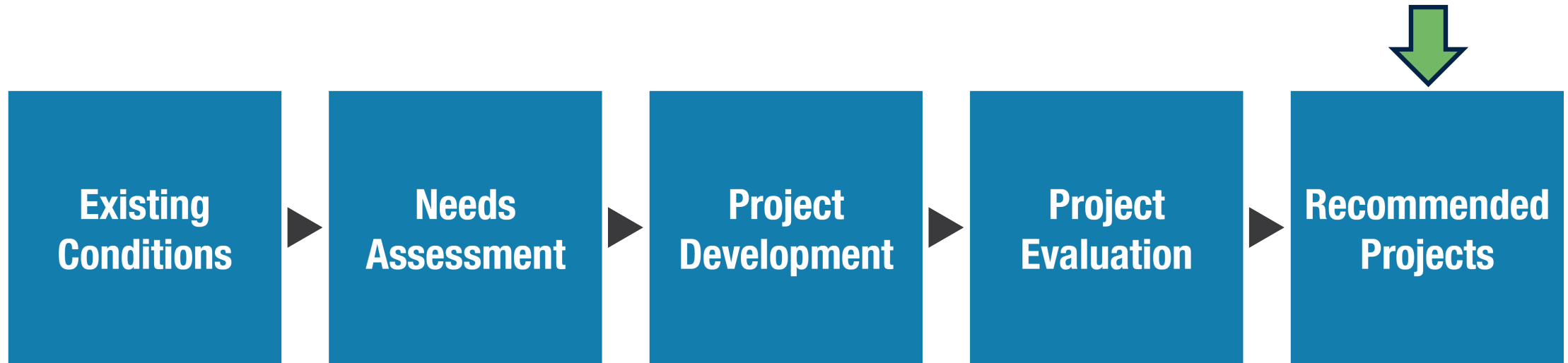
- Project Progress
- Overview of Multimodal Needs Assessment Findings
- Introduction of proposed projects and policies
- Demonstration of Online Feedback Tool



The Planning Process



The Planning Process



MULTIMODAL NEEDS ASSESSMENT



Multimodal Assessment

- Citywide Travel Demand Forecasting Model Analysis
- Traffic Operations Evaluation
- Safety Evaluation
- Multimodal Connectivity
 - Bicycle Network Analysis
 - 20-Minute Neighborhoods Analysis
 - Transit Network Analysis

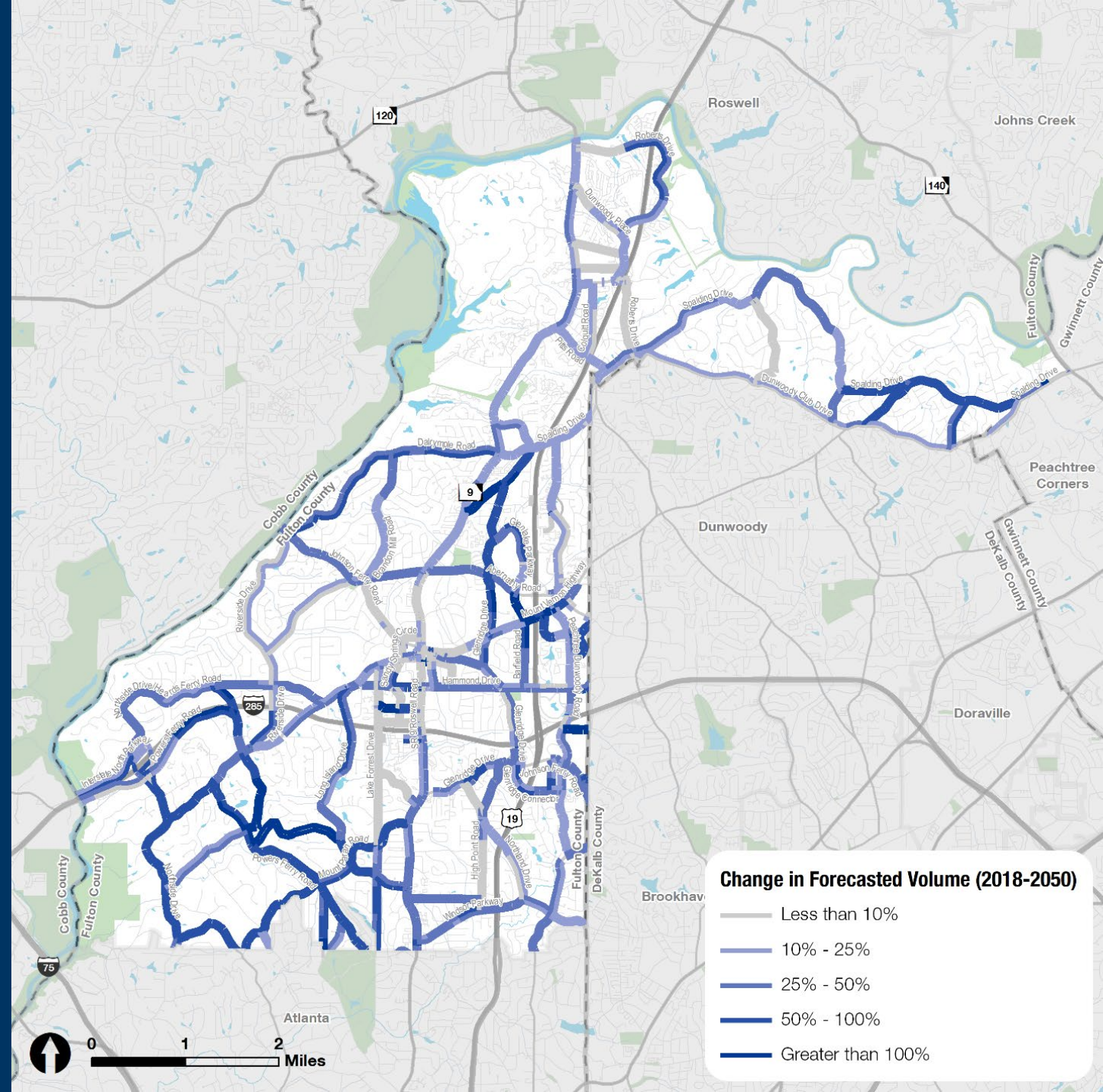


Citywide Travel Demand Forecasting Model Analysis

Many of the same roadways that have the highest volumes in 2018 will have the highest volumes in 2050. Most roadways are expected to increase in volume, many doubling by 2050.

The highest increases in volume are anticipated in western Sandy Springs: Northside Drive, Powers Ferry Road; and Mount Vernon Highway.

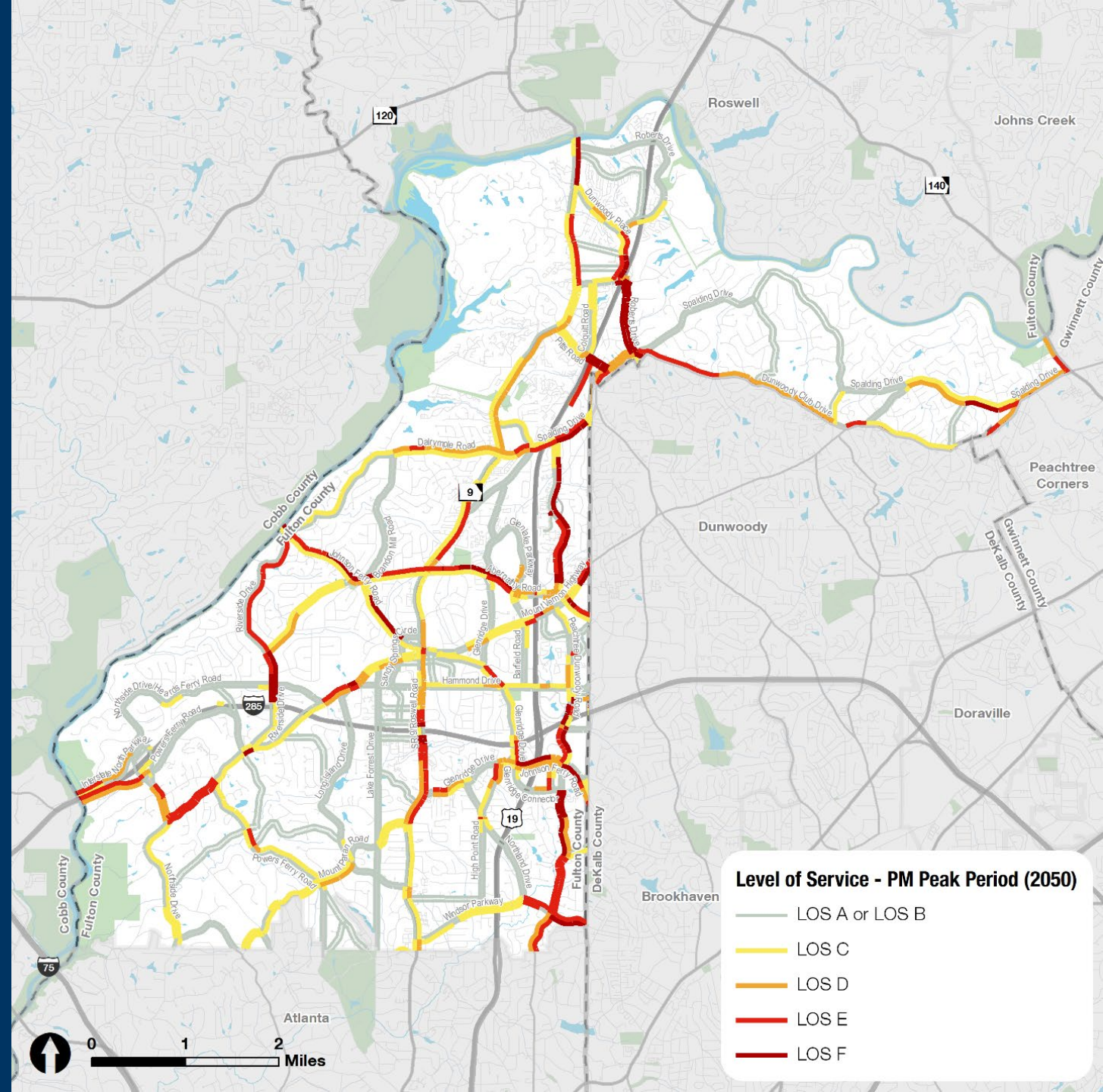
Higher increases in volume also are anticipated in eastern Sandy Springs nears SR 400, along Mount Vernon Highway, Barfield Road, and Glenridge Drive.



Citywide Travel Demand Forecasting Model Analysis

Level of service (LOS) characterizes perceived quality of service, based on delay and level of congestion. The scale starts from A and goes to F, better to worse.

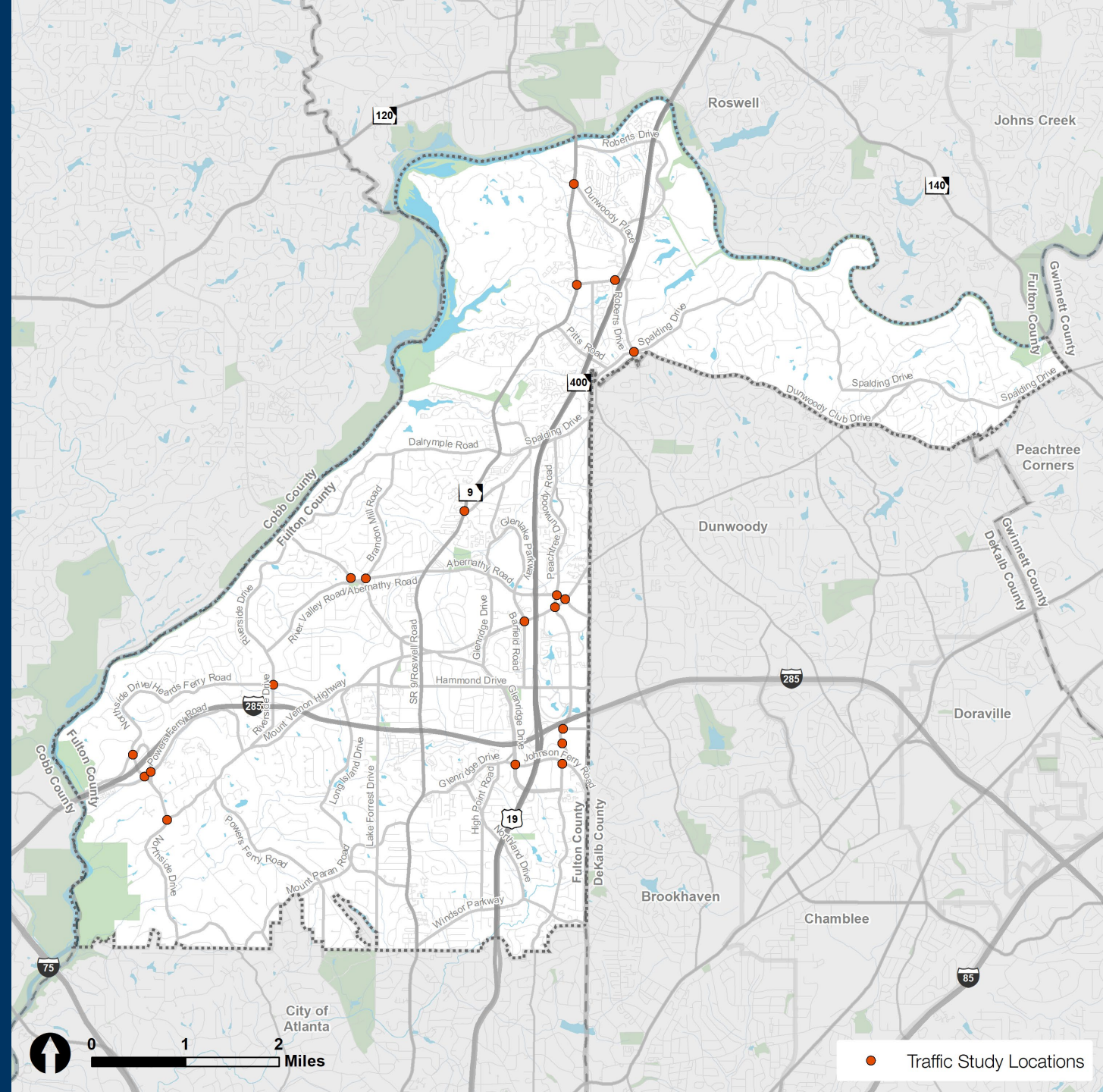
Similar to the volume map, the roadways that are currently experiencing congested conditions, continue to do so in 2050. Some roadways will be at LOS F by 2050, including portions of Johnson Ferry Road, Roswell Road, Windsor Parkway, and Peachtree Dunwoody Road.



Traffic Operations Evaluation

20 intersections in the City were reviewed in more detail to look at deficiencies and recommend potential improvement projects.

Analyses looked at traffic volumes, historical crash trends, and capacity analyses to identify both short-term improvements and long-term improvements. Field audits were also conducted.



Traffic Operations Evaluation

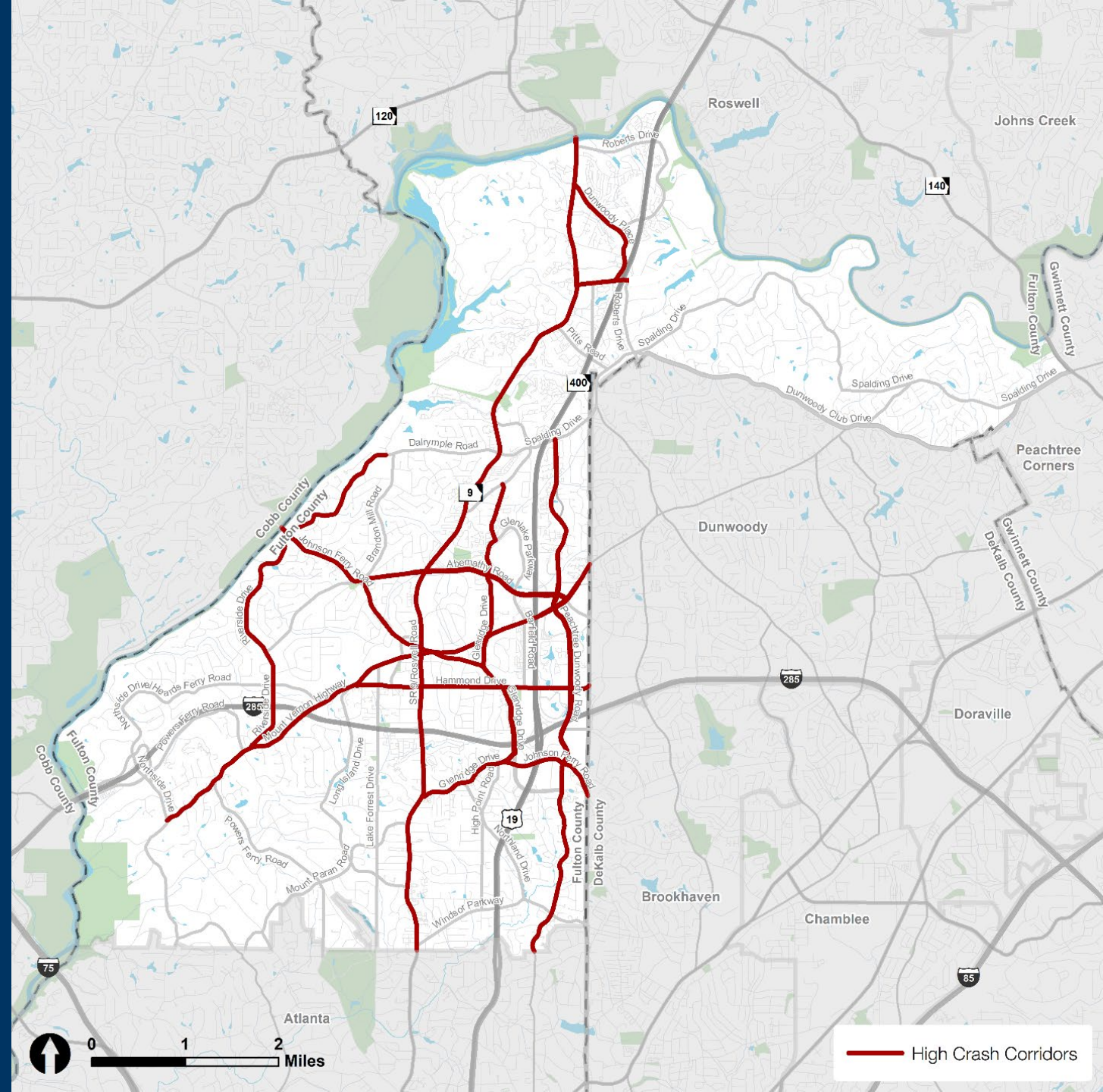
- There are several improvements that are recommended to bring each intersection up to the latest standards:
 - Repaving and restriping (as needed)
 - Traffic signal backplates with retroreflective borders
 - Raised pavement markers
 - Flashing Yellow Arrows (FYAs)
 - Retroreflective median nose delineators, where applicable
- The City has completed several large intersection projects over the past several years, and as such, the recommended improvements from this plan are more moderate in comparison.



Safety

High crash corridors were identified to understand how the roadways rank based on number, crashes per mile and crash rates.

Based on the three ranking types, **Roswell Road, Northridge Road, Dunwoody Place, and Hammond Drive** stand out as high-priority corridors.

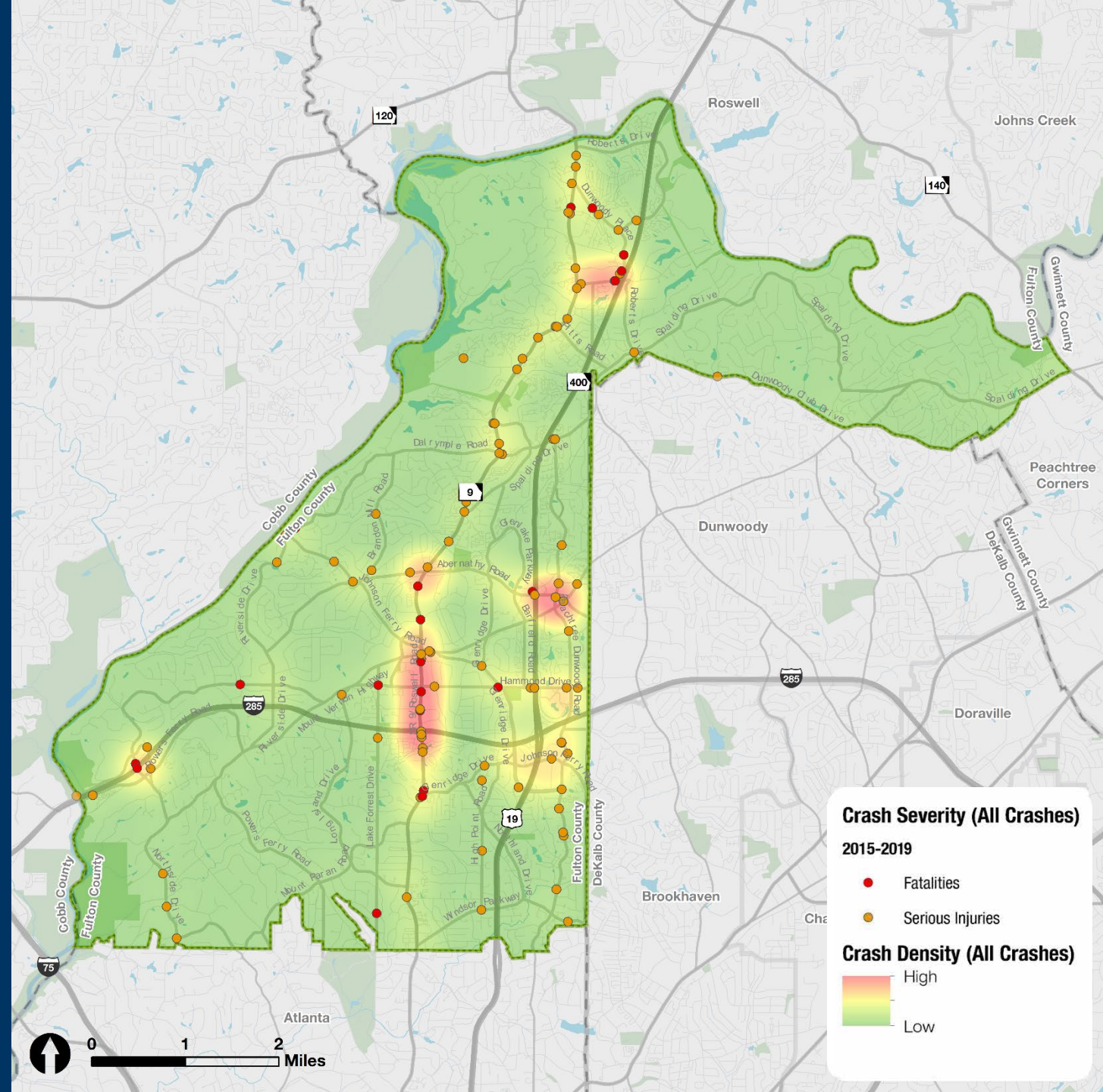


Serious Crashes

Between 2015-2019, a total of 119 crashes on surface streets in Sandy Springs resulted in a serious injury or fatality.

Locations reviewed in more detail:

- Hammond Drive at Peachtree Dunwoody Road
- Roswell Road at Lake Placid Drive
- Roswell Road at Trowbridge Road
- Roswell Road at I-285 EB Ramps
- Roswell Road at I-285 WB Ramps



Safety

Emphasis Areas

The Georgia Department of Transportation (GDOT) includes 15 emphasis areas that describe programmatic factors that contribute to crashes.

In Sandy Springs

The top 5 emphasis areas in Sandy Springs are:

- Intersection
- Distracted Drivers
- Older Drivers (55-64)
- Older Drivers (65+)
- Hit & Run

***6 “E’s” of Transportation Safety – More than just an engineering challenge!**

(education, enforcement, encouragement, engineering, evaluation, & emergency response)

Bicycling and Walking

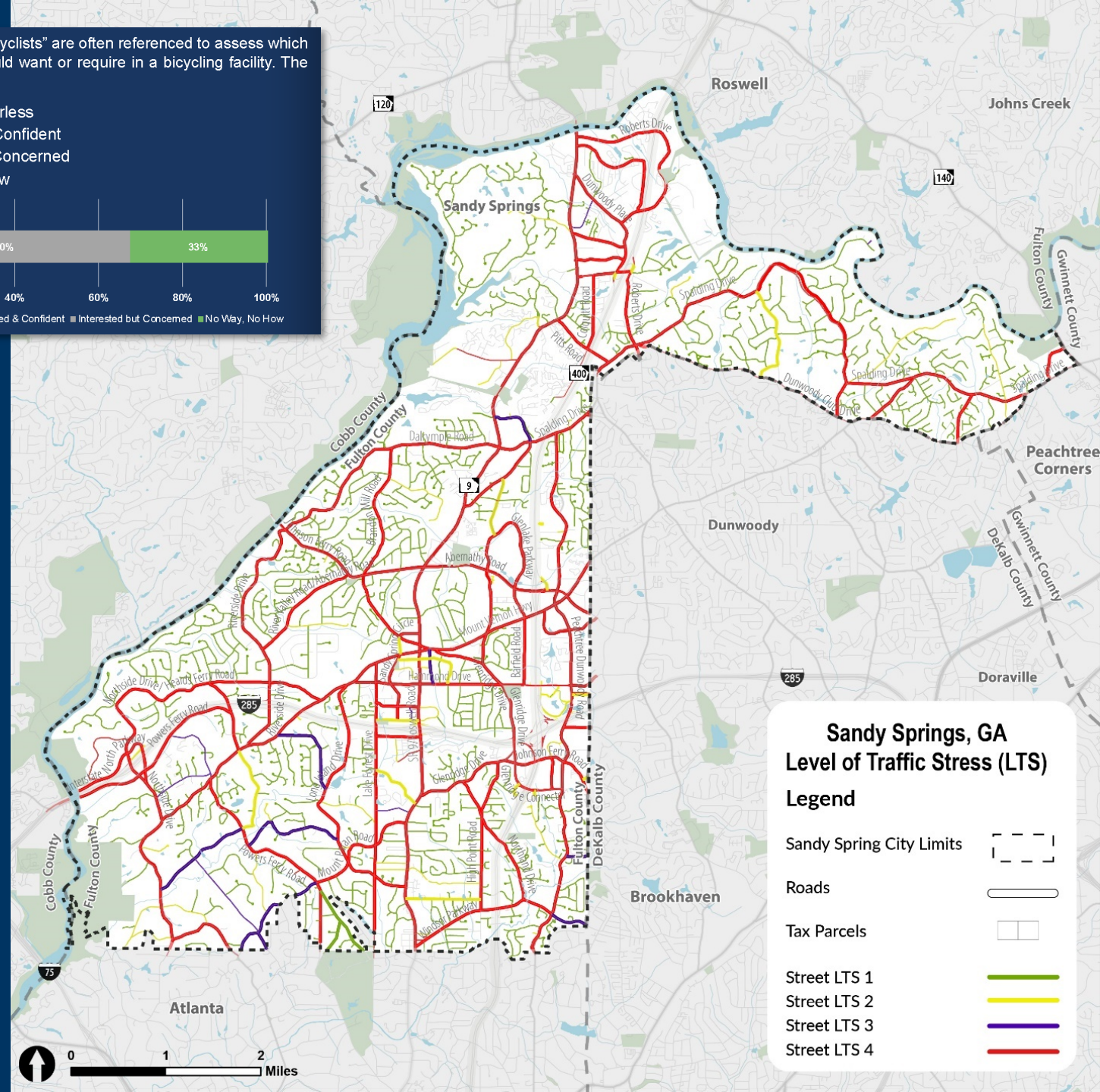
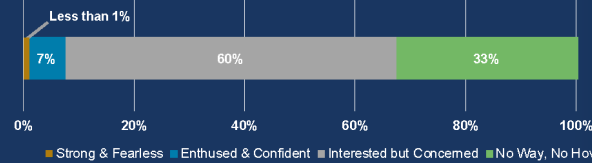
Level of Traffic Stress Analysis

- Range of LTS 1 – 4
- Identifies streets that are most suitable for bicycling with vehicular traffic.
- LTS 1 is suitable for on-street biking for most ages and abilities
- LTS 4 is suitable only for the most experienced and confident of riders unless a sidepath provided.

Most of the City's primary and secondary street network is classified as LTS 4.

The "Four Types of Bicyclists" are often referenced to assess which population groups would want or require in a bicycling facility. The four groups are:

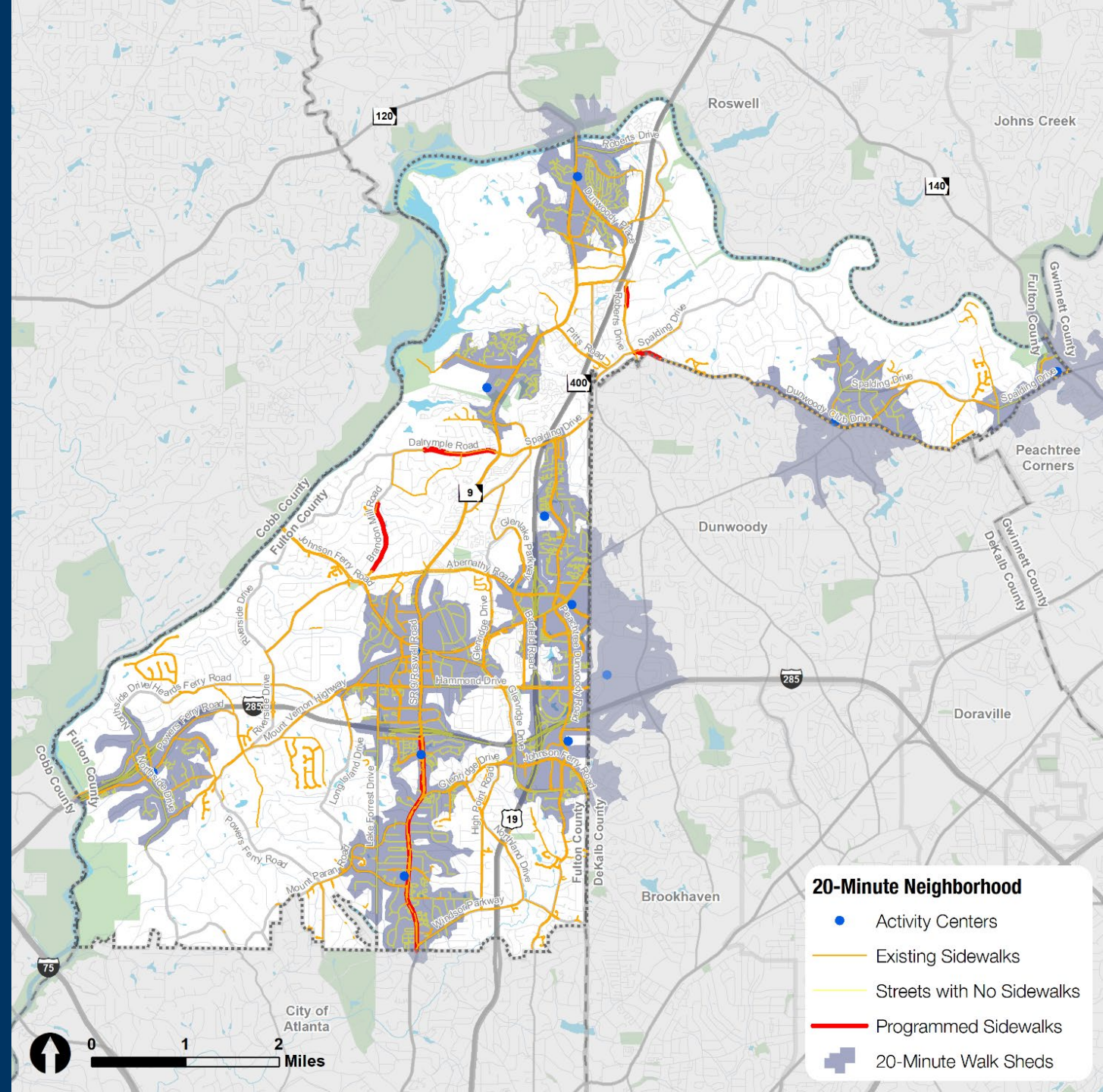
- Strong and Fearless
- Enthused and Confident
- Interested but Concerned
- No Way, No How



Bicycling and Walking

12 Neighborhood Activity Centers were identified to serve as walking destinations for residents within a 20-minute walk (~1 mile).

- Roswell Road/Long Island Drive
- Powers Ferry Village
- Roswell Road/Lake Placid Drive
- City Springs
- North End Commercial
- North Springs MARTA Station
- Sandy Springs MARTA Station
- Dunwoody MARTA Station
- Medical Center Station
- Morgan Falls Athletic Fields
- Dunwoody Club Shopping Center
- Spalding Drive/Holcomb Bridge Road



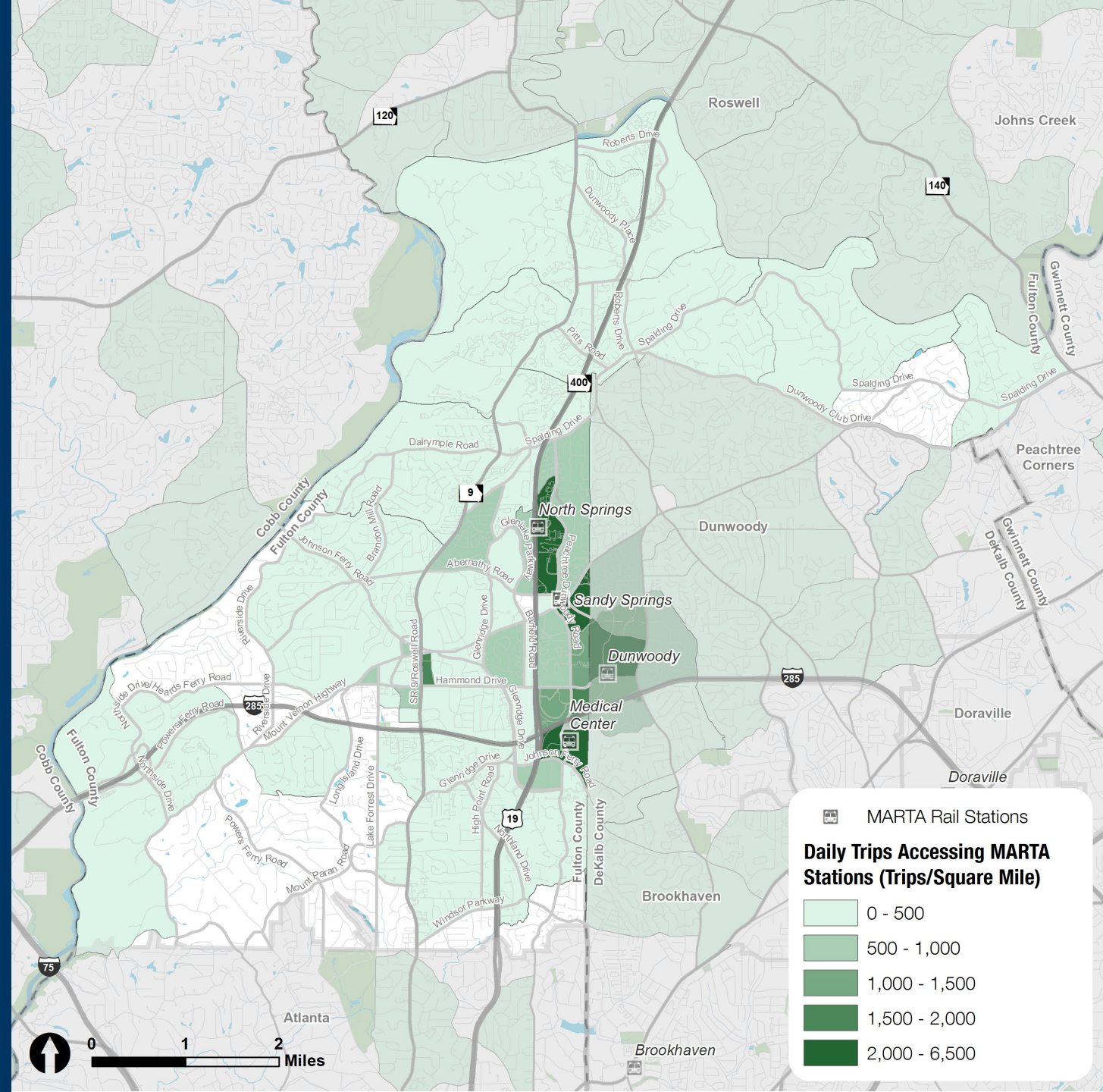
Transit Network Analysis

The Transit Analysis focused on three areas:

- Serving last mile connections to transit stops and stations
- Local circulation within Sandy Springs
- Travel needs between Sandy Springs and adjacent jurisdictions

Snapshot of the findings:

- The highest concentrations of people accessing MARTA Stations come from right nearby the station. (as seen on the map)
- Based on the MARTA Rail station, the share of people driving versus the other modes changes. 37% drive to North Springs vs. less than 10% for Dunwoody, Medical Center Stations



Transit Network Analysis

Preparing for future regional transit

- Study last mile connections to potential new BRT stations in Sandy Springs
- Participating in regional transit planning that would serve Sandy Springs

Improving Existing Transit Service

- Transit signal priority (TSP) along the key bus corridors could allow buses to travel more efficiently within the City
- Last mile connections to stations and stops



DRAFT PROJECTS & POLICIES



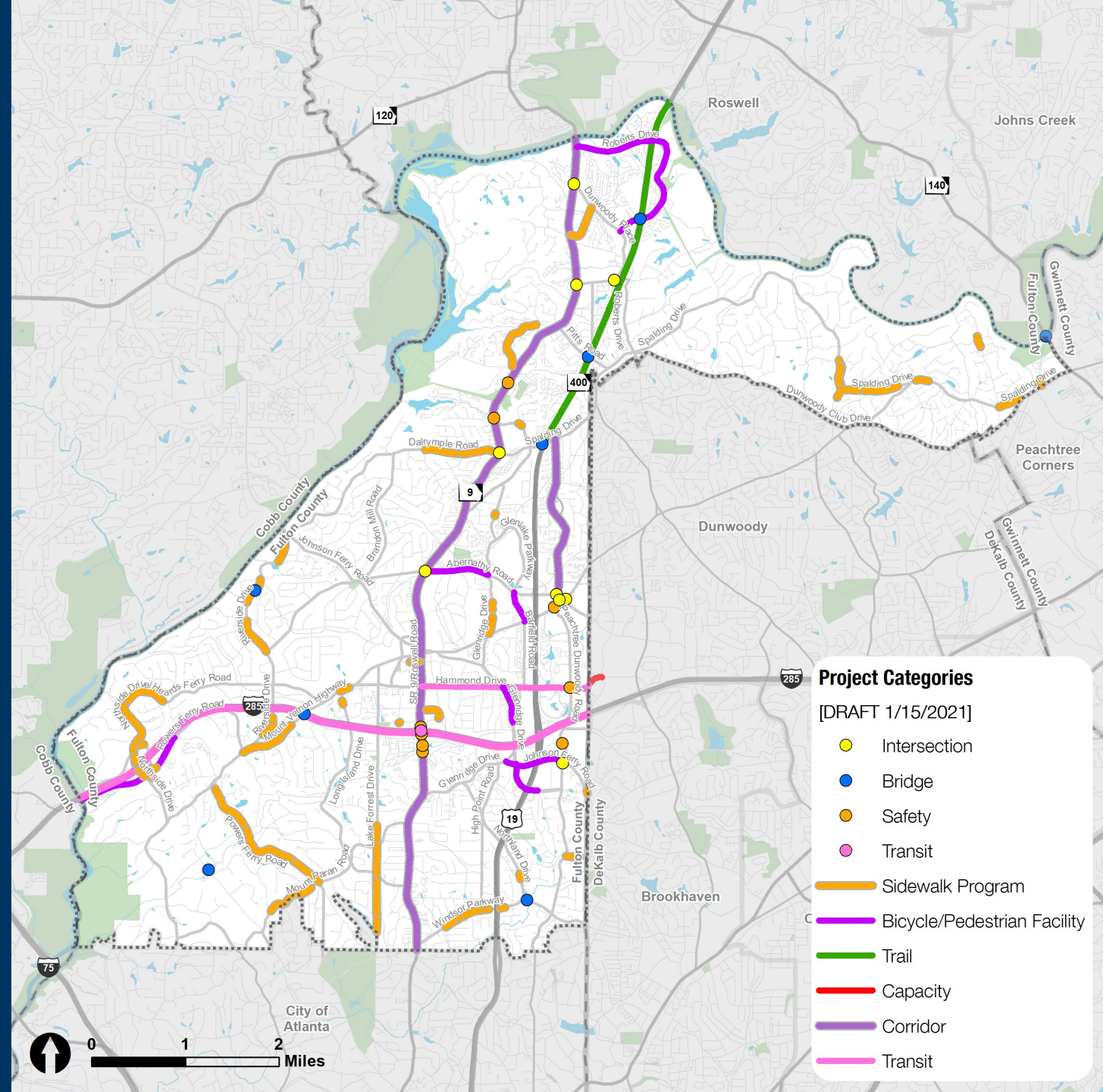
Prioritization Criteria

- Safety (25 points)
- Mobility and Accessibility (20 points)
- Well-being and Environment (20 points)
- Land Use & Transportation Integration (15 points)
- Maintenance & Management (10 points)
- Economic Vitality (5 points)
- Public Support (5 points)



Project Categories

- **Roadway**
 - Intersection
 - Capacity
 - Corridor
 - Bridge
- **Intelligent Transportation Systems**
- **Bicycle, Pedestrian & Trails**
 - Side Paths
 - Trails
 - Sidewalk Program
- **Transit**



Roadway Projects

- **Intersection**
 - **Mid-block Crossing** – Signalized intersections for pedestrians and cyclists to safely cross the road. Located in areas of high pedestrian activity and long distances between signals
 - **Intersections** – Safety and operational improvements. Mainly focused on vehicles, but also include safety and operations improvements for pedestrian crossings
- **Bridge** - includes upgrading, repairing, or reconstructing bridges to standard and multimodal/aesthetic bridge enhancements
- **Capacity** - includes widening the roadway to address high volume and congested corridors
- **Corridor** - includes access management improvements, complete streets improvements, and corridor studies



Bicycle, Pedestrian & Trails

- **Bicycle/Pedestrian Facility** - includes a separated bicycle and/or pedestrian path along the roadway
- **Trail Study** - includes the study of an off-road bicycle and/or pedestrian facility
- **Sidewalk Program** - includes a pedestrian facility along the roadway



ITS & Transit

- **Intelligent Transportation Systems (ITS)**
 - Building out fiber optic cable network to ensure communications to signals, cameras, and other devices.
 - These projects are not mapped on the Online Feedback Tool.
- **Transit Projects****
 - Transit Signal Priority – Prepare signals to provide priority to transit buses falling behind schedule.
 - Studies for regional BRT System – Studies focus on future Bus Rapid Transit (BRT) stations and how the City transportation network will connect to them.

**City is not a transit operator.

Policy Recommendations

Policies

- Zero Deaths and Safe Systems Policy
- Complete Streets Policy
- Micromobility Policy
- Policies to guide ridesharing services (Uber/Lyft)



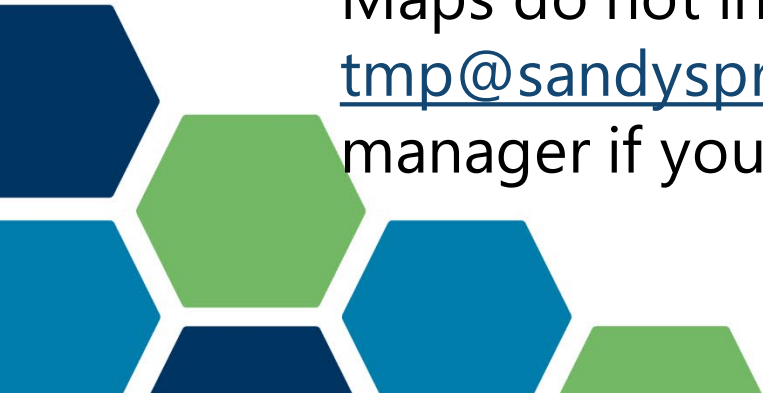
We need your help!

Please use this online map to provide feedback on these potential new projects!

- **Online Feedback Tool:** [Spr.gs/survey](https://spr.gs/survey)

Please Note!

Maps do not include current City transportation projects. Please contact ttmp@sandyspringsga.gov and we can connect you to the project manager if you have questions or comments on those projects.



SANDY SPRINGS
Transportation Master Plan

ONLINE FEEDBACK TOOL DEMO



Sandy Springs Transportation Master Plan (TMP)



SANDY SPRINGS
Transportation Master Plan

We need your input! This site was developed as a way for the public to provide feedback on the draft list of projects for the TMP. There are three interactive mapping tabs that display the proposed projects by mode: Bicycling and Walking, Transit, and Roadway. For each tab, click on an individual point or line to view more information regarding specific projects. Each mapping tab will automatically open a window on the right hand side with the option for you to 'like' or to leave specific comments for the projects. To return to the project list, click on the blue arrow (<) to the left of the project name. This online survey will be live until February 18th.

Instructions

Your Travel Habits

Bicycling and Walking

Roadway

Transit

What's Missing?

FAQ

Welcome to the Sandy Springs Transportation Master Plan (TMP) draft project online map! This site was developed as a way for the public to provide feedback on the draft list of projects for the TMP. There are three interactive mapping tabs that display the proposed projects by mode: Bicycling and Walking, Transit, and Roadway. For each tab, click on an individual point or line to view more information regarding specific projects. Each mapping tab will automatically open a window on the right hand side with the option for you to 'like' or to leave specific comments for the projects. To return to the project list, click on the blue arrow (<) to the left of the project name. This online survey will be live until February 18th.

We need your input to understand the community's priorities for transportation investments moving forward. Information regarding each of the tabs is included below.

- **Your Travel Habits** - Tell us about you and your travel habits!
- **Bicycling and Walking** - Interested in bicycling and walking in the City? Learn about the projects that are being proposed and tell us what you think! Click the tab for more specific instructions.
- **Roadway** - The TMP is considering a variety of roadway projects such as operational, new location, and capacity projects. The Roadway tab has more specific instructions regarding the proposed projects!
- **Transit** - Do you take transit today or are you interested in the future of transit in the City? Click the Transit tab to learn about the proposed projects and leave us a comment about your thoughts.
- **What's Missing?** - Please add any final thoughts, comments, or concerns in the text box below. Let us know if we are missing anything!

Thank you for visiting the survey! For more information, please visit the project website at <http://spr.gs/tmp> or email us at ttmp@sandyspringsga.gov.

SANDY SPRINGS

Transportation Master Plan

Sandy Springs Transportation Master Plan (TMP)



SANDY SPRINGS
Transportation Master Plan

We need your input! This site was developed as a way for the public to provide feedback on the draft list of projects for the TMP. There are three interactive mapping tabs that display the proposed projects by mode: Bicycling and Walking, Transit, and Roadway. For each tab, click on an individual point or line to view more information regarding specific projects. Each mapping tab will automatically open a window on the right hand side with the option for you to 'like' or to leave specific comments for the projects. To return to the project list, click on the blue arrow (<) to the left of the project name. This online survey will be live until February 18th.

[Instructions](#)[Your Travel Habits](#)[Bicycling and Walking](#)[Roadway](#)[Transit](#)[What's Missing?](#)[FAQ](#)

 Jessica Choi

Tell us more about you!

Please answer a few optional questions. This helps us understand your input better. Your information that you input will be kept private and anonymous.

Your Travel Habits

Please answer a few optional questions. This helps us understand your input better. Your information that you input will be kept private and anonymous.

What is your age?

-Please Select-

What is your total annual household income?

-Please Select-

What is your employment status?

-Please Select-

What race/ethnicity best describes you?

-Please Select-

What is your home ZIP code?

Sandy Springs Transportation Master Plan (TMP)



SANDY SPRINGS
Transportation Master Plan

We need your input! This site was developed as a way for the public to provide feedback on the draft list of projects for the TMP. There are three interactive mapping tabs that display the proposed projects by mode: Bicycling and Walking, Transit, and Roadway. For each tab, click on an individual point or line to view more information regarding specific projects. Each mapping tab will automatically open a window on the right hand side with the option for you to 'like' or to leave specific comments for the projects. To return to the project list, click on the blue arrow (<) to the left of the project name. This online survey will be live until February 18th.

Instructions

Your Travel Habits

Bicycling and Walking

Roadway


Transit


What's Missing?

FAQ




See instructions below to add comments to the map.

Bicycling and Walking Projects - Click the point or line to provide a comment for specific projects. On the right side of the screen, more information will pop up regarding project specifics.

Click the word cloud button to leave a comment: 

Click the heart button to 'like' the project: 

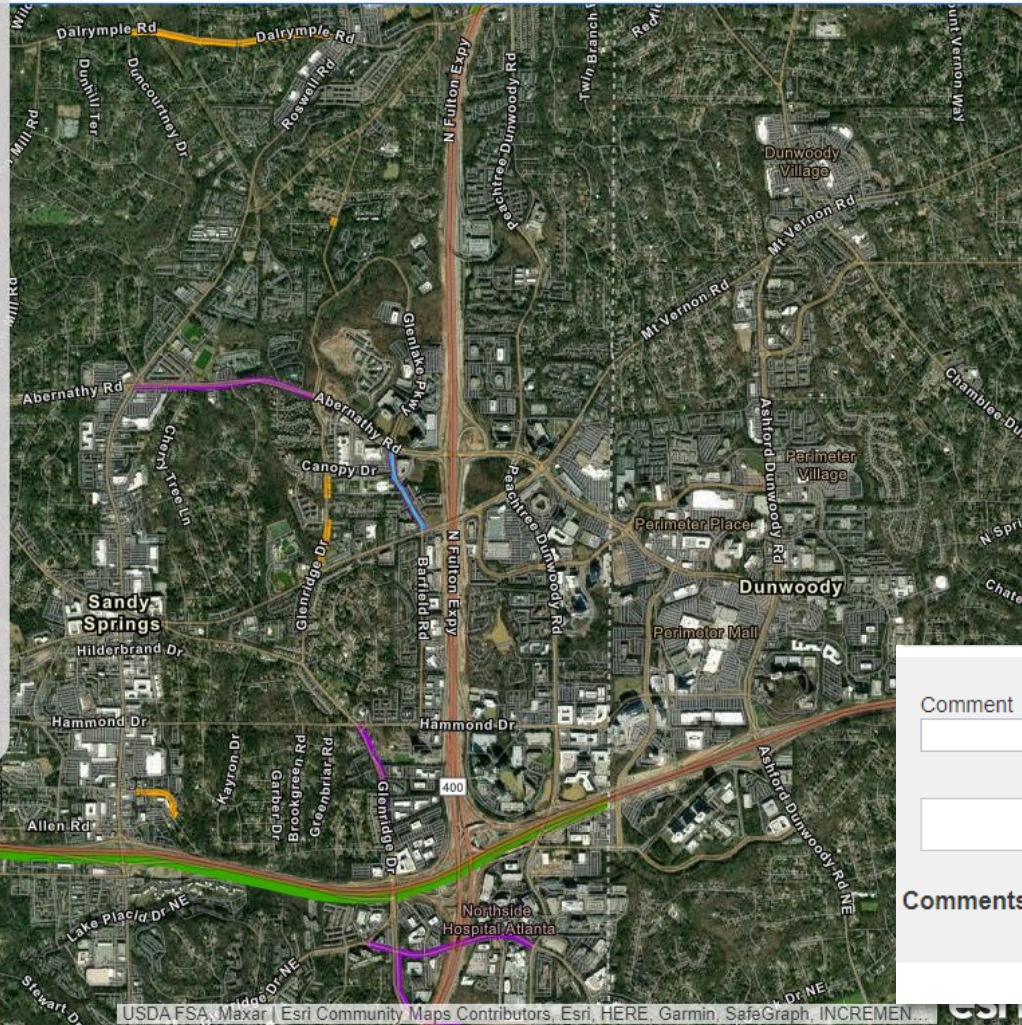
Legend

-  Sidewalk Program
-  Bicycle/Pedestrian Facility
-  Trail Study

Project Types

- Sidewalk Program** - this includes a pedestrian facility along the roadway
- Bicycle/Pedestrian Facility** - this includes a separated bicycle and/or pedestrian path along the roadway
- Trail Study** - this includes the study of an off-road bicycle and/or pedestrian facility

Sign In 



< Barfield Rd Bicycle Improvements, from Mt. Vernon...

Barfield Rd Bicycle Improvements, from Mt. Vernon Hwy to Abernathy Rd

Project Name	Barfield Rd Bicycle Improvements, from Mt. Vernon Hwy to Abernathy Rd
Road Name	Barfield Road
Extent From	Mt. Vernon Highway
Extent To	Abernathy Road
Project Type	Bicycle
Length (Mi)	0.34
Project Description	This project proposes a multi-use side path and enhanced streetscape along Barfield Road, from Mt. Vernon Highway to Abernathy Road.
Cost	\$6,500,000



Comments

No comments

Comment

255

Submit

Cancel

Comments

No comments

Sandy Springs Transportation Master Plan (TMP)

We need your input! This site was developed as a way for the public to provide feedback on the draft list of projects for the TMP. There are three interactive mapping tabs that display the proposed projects by mode: Bicycling and Walking, Transit, and Roadway. For each tab, click on an individual point or line to view more information regarding specific projects. Each mapping tab will automatically open a window on the right hand side with the option for you to 'like' or to leave specific comments for the projects. To return to the project list, click on the blue arrow (<) to the left of the project name. This online survey will be live until February 18th.



- Instructions
- Your Travel Habits
- Bicycling and Walking
- Roadway
- Transit
- What's Missing?
- FAQ

Roadway Projects

See instructions below to add comments to the map.

Roadway Projects - Click the point or line to provide a comment for specific projects. On the right side of the screen, more information will pop up regarding project specifics.

Click the word cloud button to leave a comment:

Click the heart button to 'like' the project:

Legend

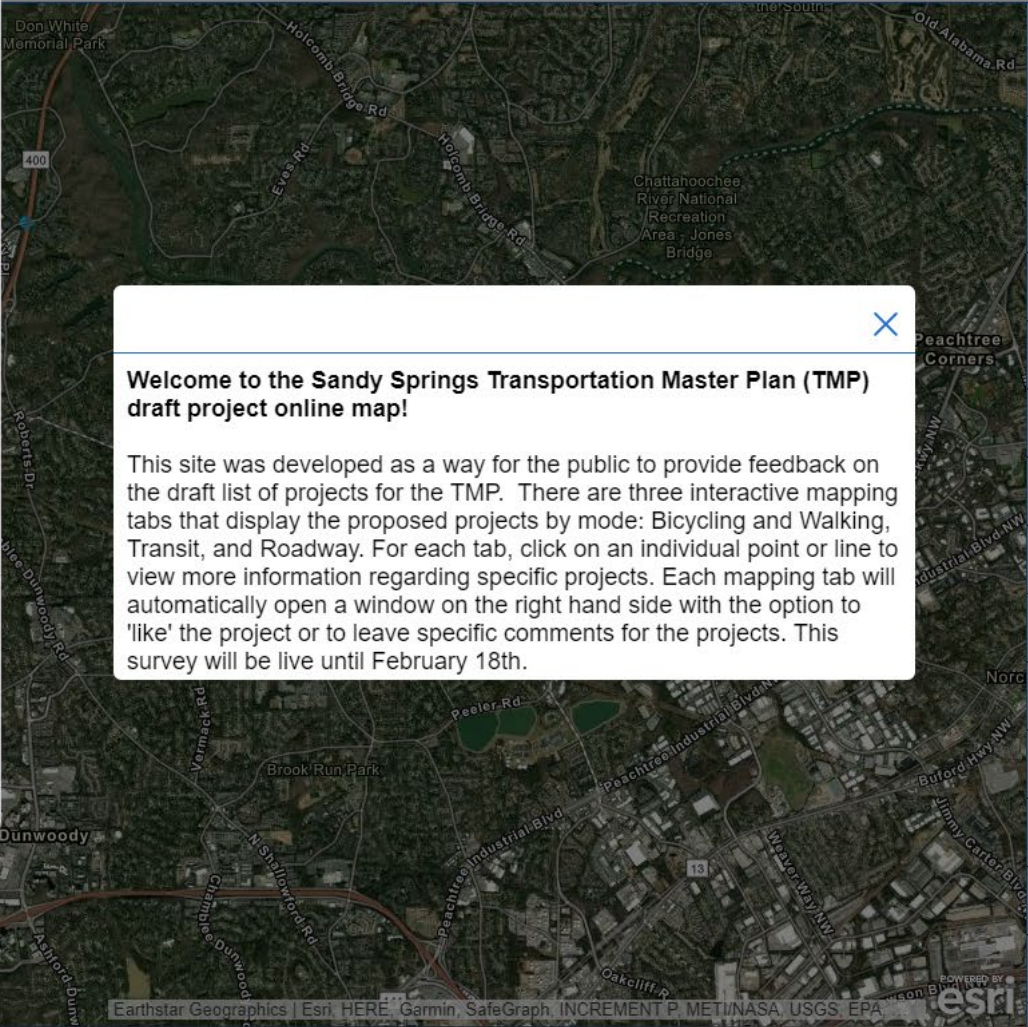
Intersection

Bridge

Capacity

Corridor

- Project Types
- Intersection** - this includes intersection improvements such as modifying signal timing, installing signage and pavement markings, and reconstructing lanes
 - Bridge** - this includes upgrading, repairing, or reconstructing bridges to standard
 - Capacity** - this includes widening the roadway to address high volume and congested corridors
 - Corridor** - this includes access management improvements, complete streets improvements, and corridor studies



Sign In ?

Filter list by map ☐

Abernathy Road at Mount Vernon Highway Interse...	0	♥
Abernathy Road at Peachtree Dunwoody Road Inte...	0	♥
Abernathy/Mount Vernon Highway/Peachtree Dun...	0	♥
Dunwoody Place at Roswell Road Intersection Imp...	0	♥
Fulton County Annex Midblock Crossing	0	♥
GA 400 Bridge Enhancements	0	♥
GA 400 Bridge Enhancements	0	♥
GA 400 Bridge Enhancements	0	♥
Hammond Drive Improvements	0	♥
Hammond Drive at Peachtree Dunwoody Road Inte...	0	♥
Holcomb Bridge Bicycle/Pedestrian Bridge	0	♥
Hollis Cobb Circle at Peachtree Dunwoody Road In...	0	♥
I-285 Top End Bridge Enhancements	0	♥
I-285/Roswell Road Innovative Interchange Study	0	♥



Sandy Springs Transportation Master Plan (TMP)

We need your input! This site was developed as a way for the public to provide feedback on the draft list of projects for the TMP. There are three interactive mapping tabs that display the proposed projects by mode: Bicycling and Walking, Transit, and Roadway. For each tab, click on an individual point or line to view more information regarding specific projects. Each mapping tab will automatically open a window on the right hand side with the option for you to 'like' or to leave specific comments for the projects. To return to the project list, click on the blue arrow (<) to the left of the project name. This online survey will be live until February 18th.



- Instructions
- Your Travel Habits
- Bicycling and Walking
- Roadway
- Transit
- What's Missing?
- FAQ

See instructions below to add comments to the map.

Transit Projects - Click the point or line to provide a comment for specific projects. On the right side of the screen, more information will pop up regarding project specifics.

Click the word cloud button to leave a comment:

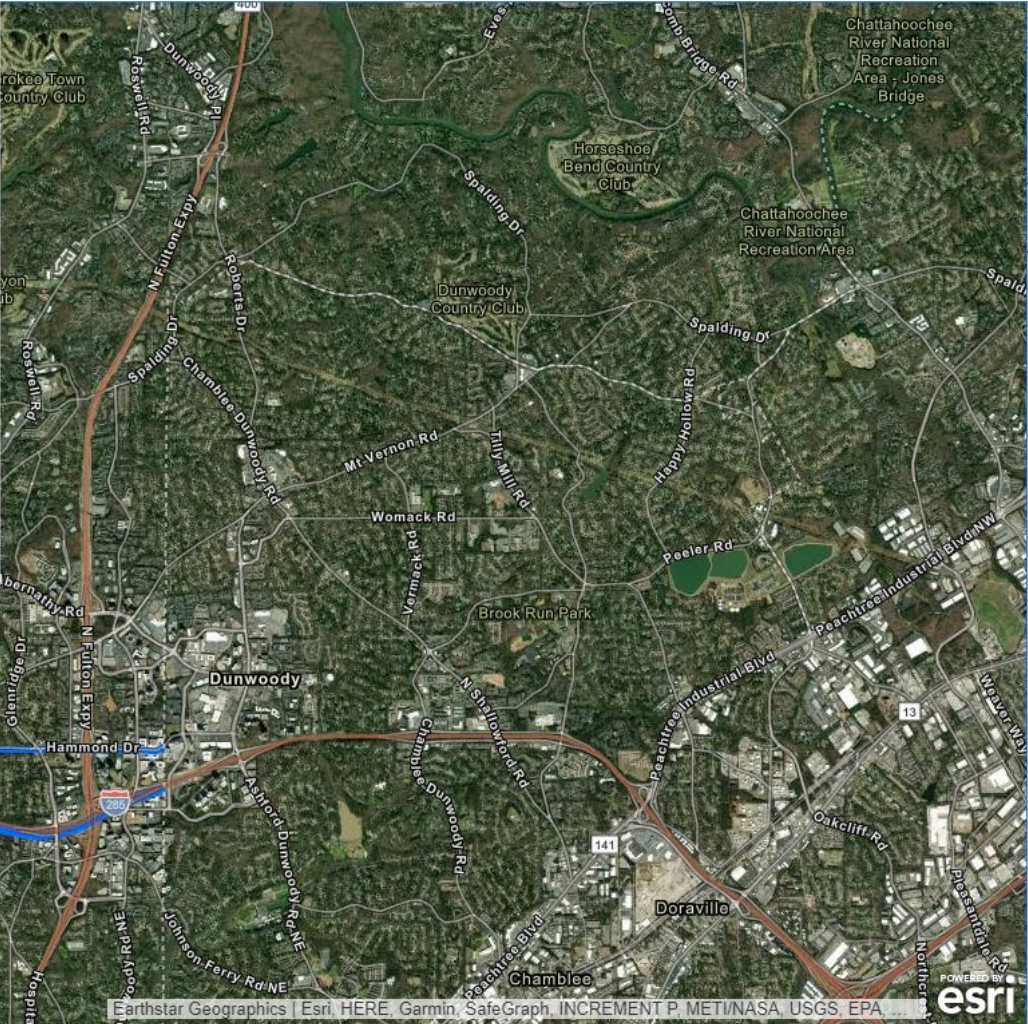
Click the heart button to 'like' the project:

Legend

Transit

Project Types

- Transit - this includes feasibility studies for transit supportive improvements, Bus Rapid Transit (BRT), and access connectivity with land use improvements



Sign In

Filter list by map

I-285 BRT Feasibility Study	0
I-285 at Roswell Road Station Area Study	0
Transit Signal Priority Supportive Improvements alo...	0

Sandy Springs Transportation Master Plan (TMP)

We need your input! This site was developed as a way for the public to provide feedback on the draft list of projects for the TMP. There are three interactive mapping tabs that display the proposed projects by mode: Bicycling and Walking, Transit, and Roadway. For each tab, click on an individual point or line to view more information regarding specific projects. Each mapping tab will automatically open a window on the right hand side with the option for you to 'like' or to leave specific comments for the projects. To return to the project list, click on the blue arrow (->) to the left of the project name. This online survey will be live until February 18th.

Instructions

Your Travel Habits

Bicycling and Walking

Roadway

Transit

What's Missing?

FAQ

Thank you for your input so far!

Please add any final thoughts, comments, or concerns in the text box below. Let us know if we are missing anything!

What's Missing?

Thank you for your input so far! Please add any final thoughts, comments, or concerns in the text box below. Let us know if we are missing anything!

What's missing?

1000

Submit

Sandy Springs Transportation Master Plan (TMP)



We need your input! This site was developed as a way for the public to provide feedback on the draft list of projects for the TMP. There are three interactive mapping tabs that display the proposed projects by mode: Bicycling and Walking, Transit, and Roadway. For each tab, click on an individual point or line to view more information regarding specific projects. Each mapping tab will automatically open a window on the right hand side with the option for you to 'like' or to leave specific comments for the projects. To return to the project list, click on the blue arrow (<) to the left of the project name. This online survey will be live until February 18th.

SANDY SPRINGS
Transportation Master Plan

- Instructions
- Your Travel Habits
- Bicycling and Walking
- Roadway
- Transit
- What's Missing?
- FAQ

Frequently Asked Questions:

1. How will my comments and responses to this survey be used?

- Your feedback will help the City make edits and finalize the project list. Any information you provide in the "Travel Habits" tab will remain confidential and is used to ensure we are reaching all reaching all segments of the Sandy Springs population.

2. When will these recommended projects be constructed?

- These project recommendations are not currently funded and do not have a projected construction timeline.

3. Why aren't the current transportation projects, included those funded by TSPLOST or CIP, shown on the map?

- Transportation projects underway have had or will have their own public open houses to collect project feedback. For more information on a specific project, please contact ttmp@sandyspringsga.gov and you will be connected with the project manager.

Have additional questions or would like more information on a recommended project? Please contact us at ttmp@sandyspringsga.gov! Please specify if you prefer a response via email or a phone call.

SANDY SPRINGS

Transportation Master Plan

Next Steps

- **Online Survey**
 - Survey Open: January 28th – February 18th
- **Draft and Final Plan expected Spring 2021**
- **Visit the Project Website:** <http://spr.gs/tmp>
- **Contact Us:**
 - Caitlin Shankle, Transportation Planner – tmp@sandyspringsga.gov



QUESTIONS?



SANDY SPRINGS

Transportation Master Plan

THANK YOU!

