

# Cultural Center

November 6, 2018



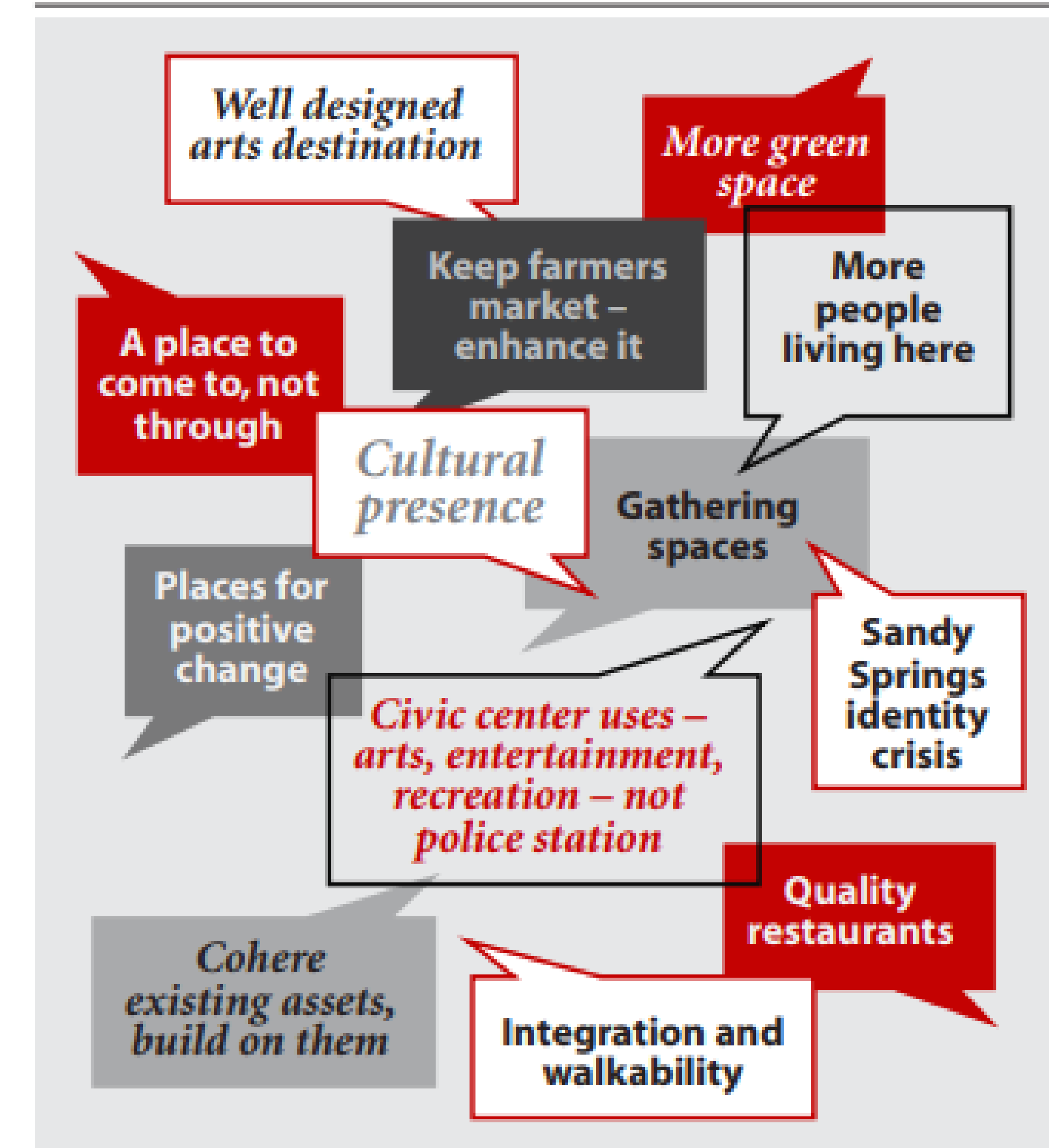
SANDY SPRINGS™

GEORGIA

# City Center Master Plan

- The 2012 City Center Master Plan established the following goals:
  - Create a unique, vibrant, walkable City Center rich in amenities desired by the community, such as commercial, retail, recreational, and cultural facilities
  - Create an appropriate setting for a new civic/cultural center that functions as a place of community activity and identity

Exhibit 5: Thoughts, Opinion, and Visions from the Community

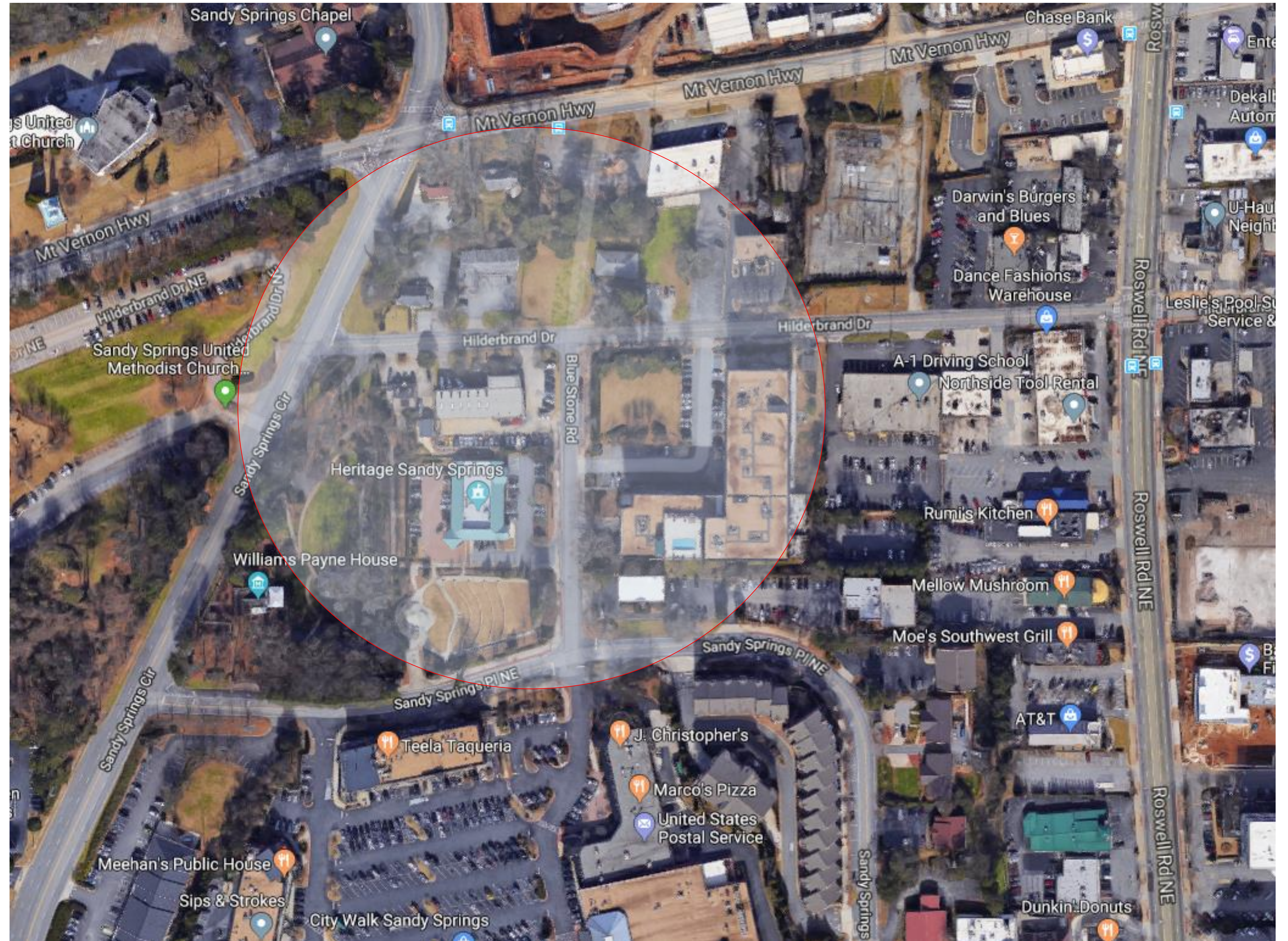


Representative comments from the thoughts, opinions, and vision statements produced by members of the community.

# Cultural Center: Background & Opportunities

- A Cultural Center will support the vision of the City Center Master Plan by serving as a place of community activity. A Cultural Center would foster creativity and support for arts in the community through education, innovation and collaboration.
  - Opportunity to bring multiple parties together & consolidate numerous cultural elements into the City Springs District
  - Potential to create flexible space suited to the needs of the proposed users that will provide substantial public benefit

# Potential Location



# Partnership Opportunities

- Design Cultural Center to include:
  - Visit Sandy Springs Offices & Welcome Center
  - Perimeter Chamber of Commerce
  - Georgia Commission on the Holocaust
  - Anne Frank Offices & Exhibit
  - Gallery Space
- Memorandums of Understanding will set the framework for collaboration and exploration of potential options:
  - MOU has been approved by the Georgia Commission on the Holocaust and Visit Sandy Springs
  - Draft MOU under consideration by the Perimeter Chamber of Commerce

# Partner MOUs

- Responsibilities of the City:
  - Providing land for the construction of the building.
  - Identifying, hiring and providing oversight to architect to design and contractor to build the building.
  - Paying for a portion of the construction of the building.
  - Paying for the buildout of the space it will use or share in the building.
  - Maintaining the exterior and grounds of the building.
  - Providing ongoing security for the building, its tenants.

# Partner MOUs

- Responsibilities of the Partners:
  - Working with the Authority's architects and contractors to determine the amount and kind of space which will be needed for their operations, Exhibitions, and shared space.
  - Paying for a portion of the cost for architects to design the building.
  - Paying for a portion of the construction of the building.
  - Paying for build out of the space they will use & share.
  - Paying for a portion of operational expenses for the building.
- Provided the entities agree to move forward following the design phase, defined and detailed agreements will be established.

# Lead Architect Selection

- Houser Walker Architecture
  - Met all requirements for Capabilities & Approaches assessment
  - Performance Confidence Assessment: Substantial Confidence
  - Cost/Price Assessment: Met all requirements
  - Similar Projects:
    - Alpharetta Arts Center
    - Gwinnett Environmental Heritage Center
    - University of West Georgia Fine Arts Complex





# Next Steps

- Proceed with design services
- Public open house with design firm within 30-45 days
- Present initial concept design & budget at the January 2019 Council Retreat and seek Council consensus to proceed

# Questions