

SANDY SPRINGS CULTURAL CENTER
CITY OF SANDY SPRINGS

PUBLIC INPUT MEETING
NOVEMBER 29, 2018

HOUSER WALKER ARCHITECTURE

AGENDA:

OVERVIEW

PROGRAMS AND ENTITIES

MASTER PLAN CONTEXT

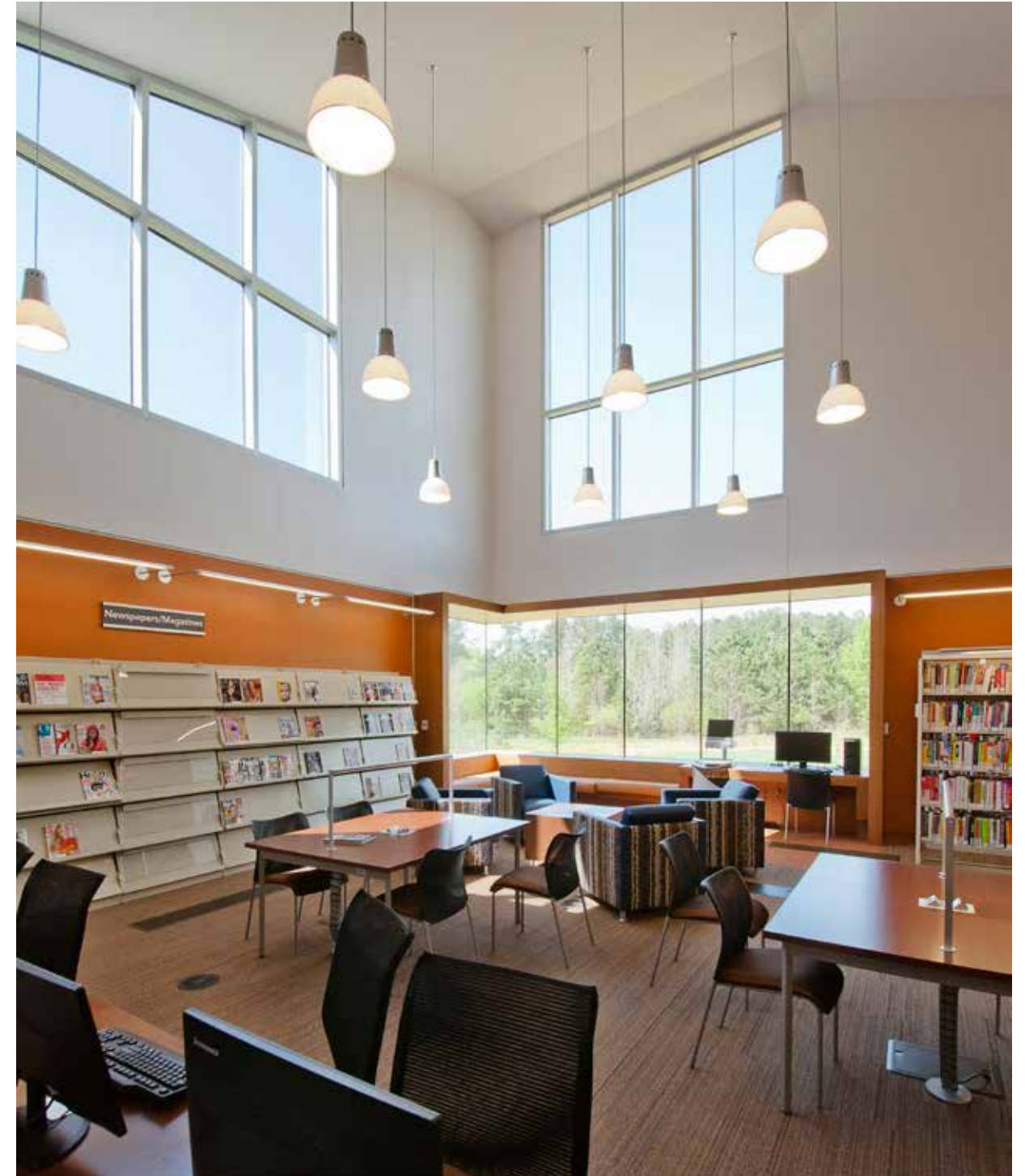
INPUT SESSIONS (SMALL GROUPS)

GROUP DISCUSSIONS AND INPUT

PIN UP OF INPUT

REVIEW OF INPUT AND SUMMARY THOUGHTS

ADJOURN



OVERVIEW: DESIGN TEAM

Design Leadership

**H O U S E R
W A L K E R**
ARCHITECTURE

Partner in Charge,
Gregory Walker, AIA, LEED AP

Core Design Team

INTEGRAL
CONSULTING ENGINEERING
MEPFP Engineering

HWA
Interior Design
FFE Selection &
Procurement

HILLWORKS
Landscape
Architecture

CSG
COSTING SERVICES GROUP, INC.
Cost Modeling

**PEARL
STREET
AUDIO**
Acoustical
Consultant

SHEAR
STRUCTURAL
Structural
Engineering

LONG
ENGINEERING, INC.
Civil
Engineering



OVERVIEW: GOALS FOR THE CULTURAL CENTER

From the 2012 Master Plan document:

“Create an appropriate setting for a new civic/cultural center that functions as a place of community activity and identity.”

“Public interest in parks, walkable streets and cultural events that bring people together can shape private investment that helps build a welcoming place full of life and community.”

“Introduce a green space network that accommodates a variety of activities, draws activity from new development, and ties together City Center, Sandy Springs’ established neighborhoods, and existing open spaces.”

“Introduce active, connected green space network.”

Measures of Success: *“A civic/cultural center, integrating a building with complementary public landscaped areas, is prominently in place. It attracts residents from throughout Sandy Springs to participate in a variety of activities throughout the day and week, with emphasis on cultural and community activities besides day-to-day City business.”*

Continues the City’s “The Next Ten” initiative outlined - that the City Springs District is unique, vibrant, and walkable district, serves as a civic/cultural center for Sandy Springs, and a focus for community activity and identity.

PROGRAMS AND ENTITIES

Proposed Occupants:

Georgia Commission on the Holocaust
Anne Frank Exhibit
William Alexander Scott III Exhibit
Holocaust Exhibitions

Exhibit Gallery

Flexible exhibition gallery or galleries,
Rotating content

Sandy Springs/Perimeter Chamber of Commerce

Offices and meeting spaces

Visit Sandy Springs

Offices and flexible work/meeting rooms
Brochure display areas



OVERVIEW:

Overall

19,000-25,000 square feet of program area

Individual program areas, with shared spaces and services

Street Access

GHC and Visit Sandy Springs need direct street access

Urban Connections

Emphasis on the Blue Stone corridor

Connect to existing parks as available

Incorporate recent streetscape upgrades



Existing Program Summary

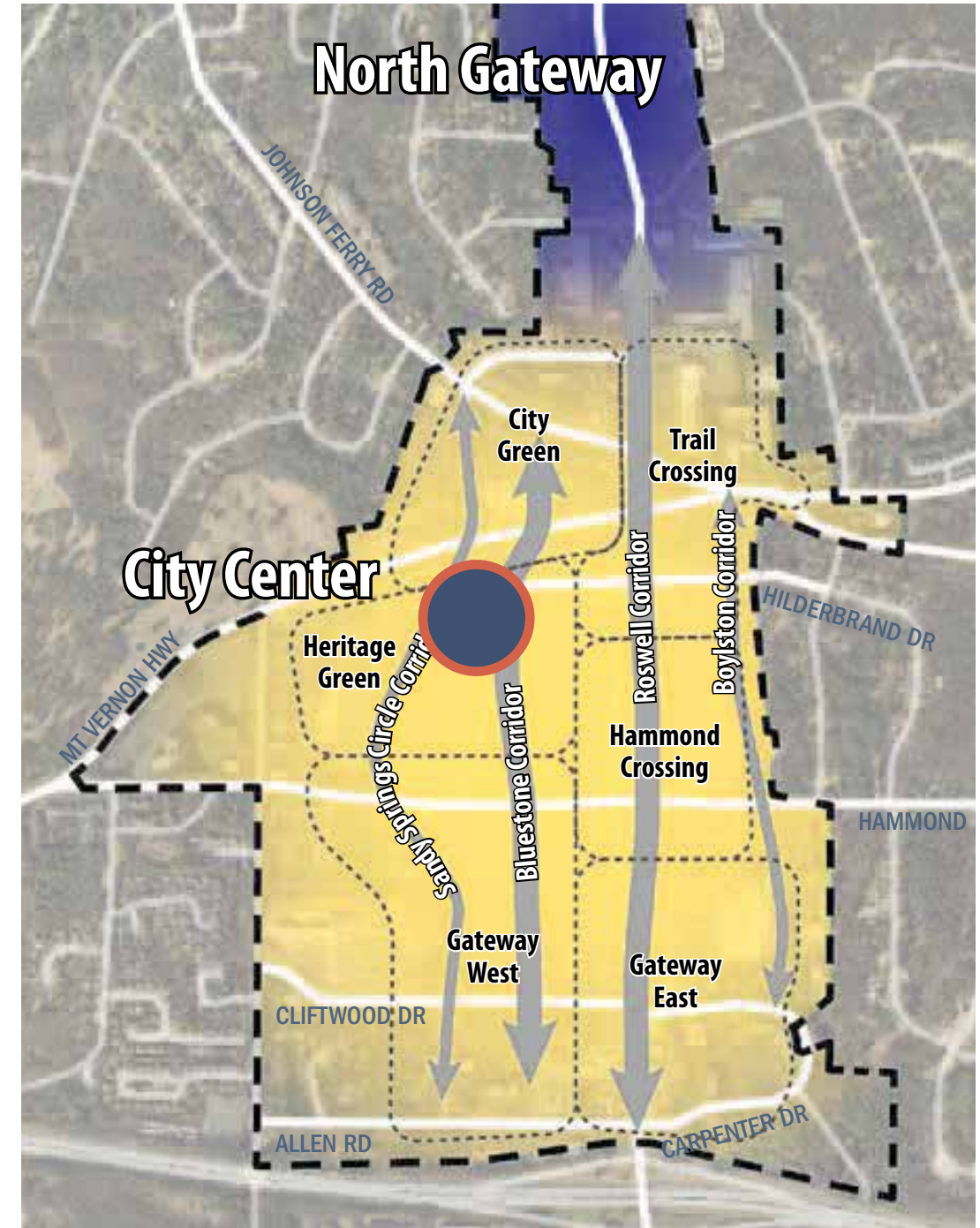
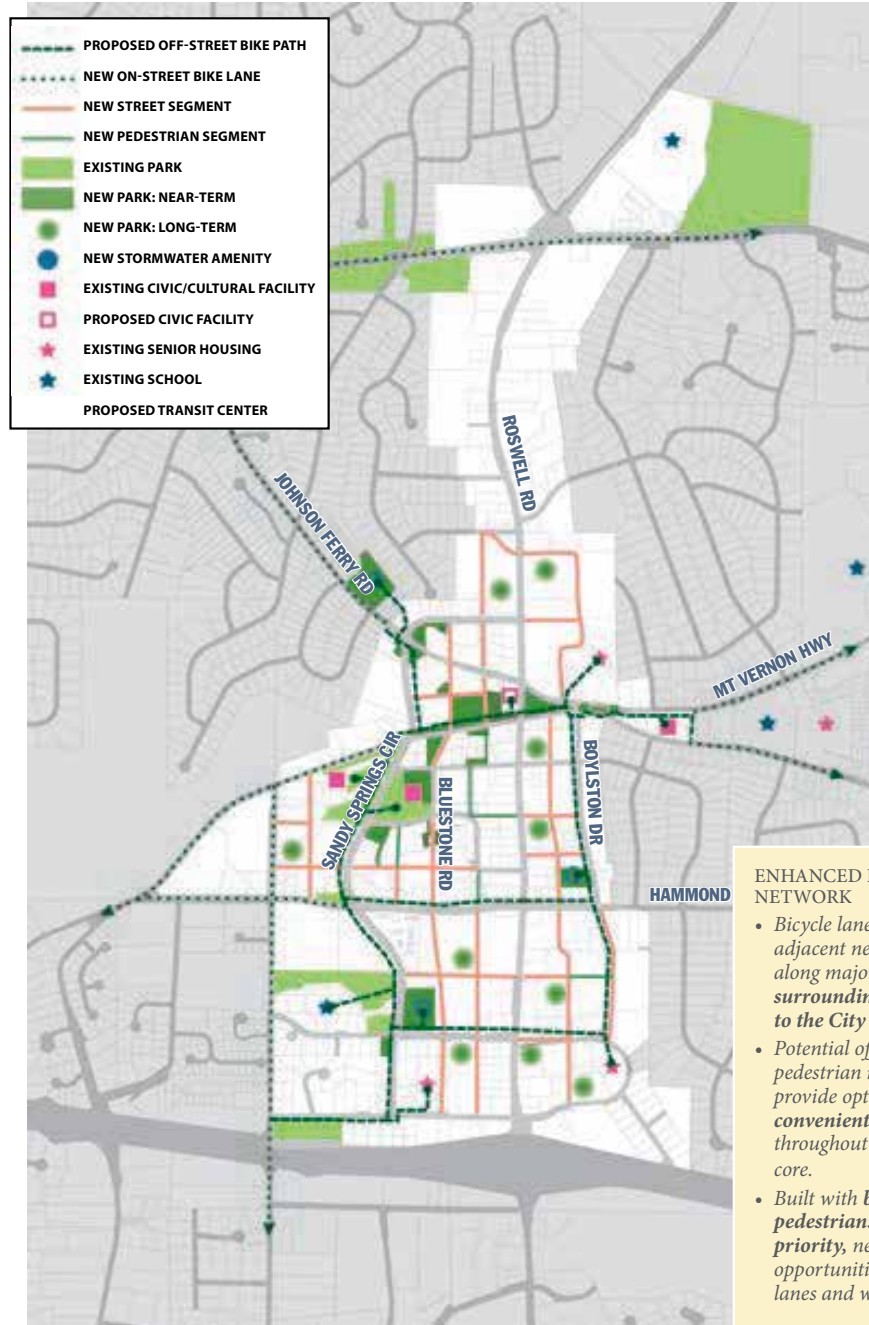
PUBLIC INPUT MEETING

SANDY SPRINGS CULTURAL CENTER
CITY OF SANDY SPRINGS

11.29.18

Reinforcing the corridors and park space identified by the Master Plan

Exhibit 21: Proposed Off-Street Multi-use Path Network

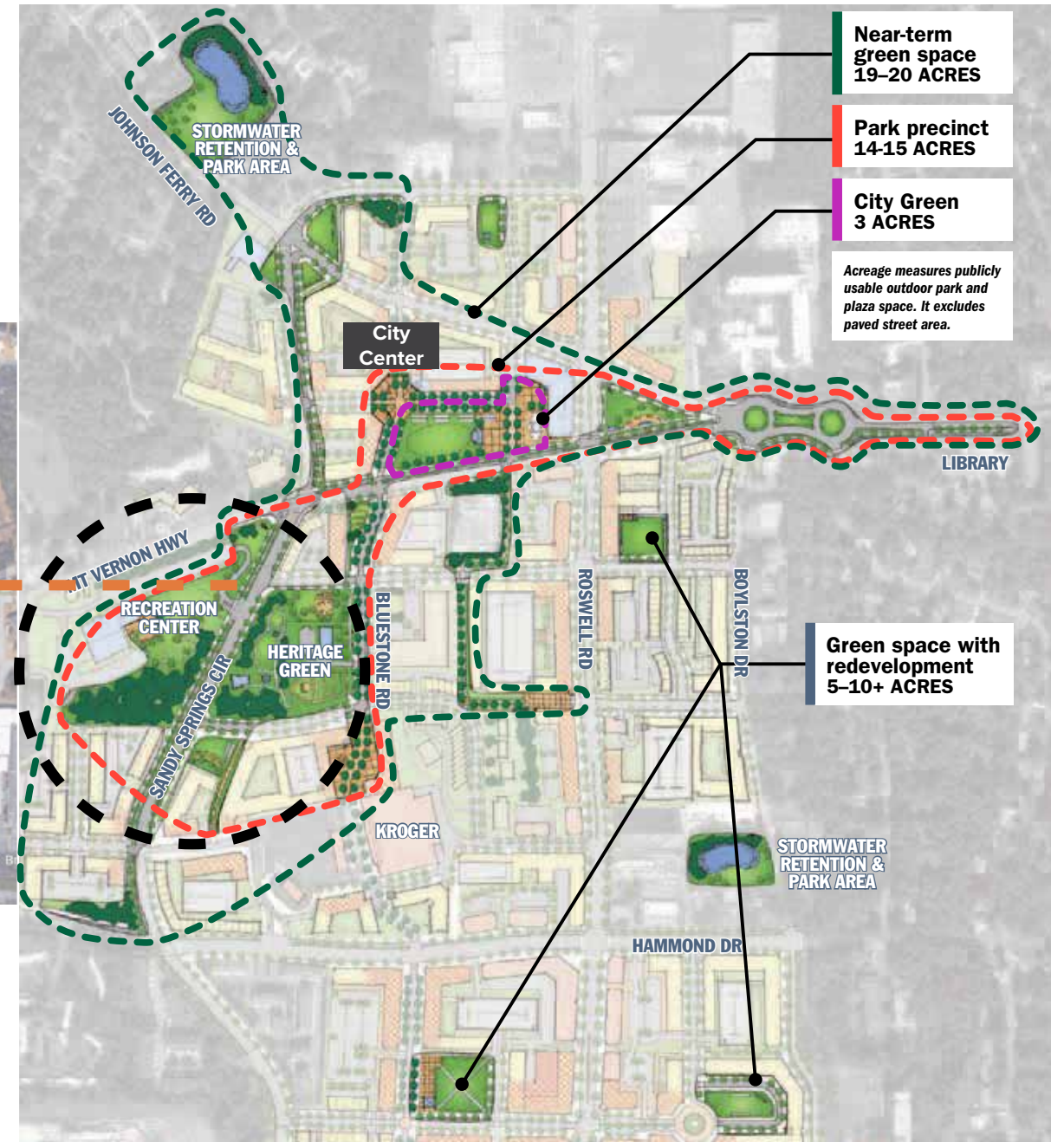


Reinforcing the pedestrian focus

Nearby trails

Shared Parking

Pedestrian Corridors



The proposed green space framework includes varied types of open space: more formal, intimate space lined with active uses (City Green) and larger, more passive space for recreation (Heritage Green playground). These appeal to a wide range of residents and visitors and allow diverse programming that can appeal to many users.

Site Analysis

MASTER PLAN CONTEXT

HERITAGE GREEN (Sandy Springs Circle/Bluestone Road corridor). An active area combining the events and tranquility of Heritage Green with an intense retail “main street” reviving the City Walk development. Significant new housing at City Walk, an extension of Bluestone Road north of Hilderbrand Drive to connect with the City Green, and development on other sites will bring activity to the neighborhood and tie it securely into nearby housing, existing and new.

GATEWAY WEST (Sandy Springs Circle/Bluestone Road corridor). A redeveloped north edge of Hammond Drive will join existing housing and staged redevelopment of large sites to the south to create a distinct and highly accessible neighborhood. New cross streets and improved sidewalks and crosswalks can transform this auto-dominated corridor into a place for people.

Adjacent neighborhoods will enjoy easy access to new retail, park and cultural amenities thanks to better connections that discourage cut-through traffic. These connections will include walking and biking routes as well as new public parking that lets residents park in one place to reach multiple destinations. This improved access to amenities will increase property values in Sandy Springs, especially in places within walking distance of City Center.



PROGRAMS AND ENTITIES

Core Principles that we see so far:

Program is defined by:
Outreach, History, and Imagination

Maintaining discrete but
interconnected identities for each

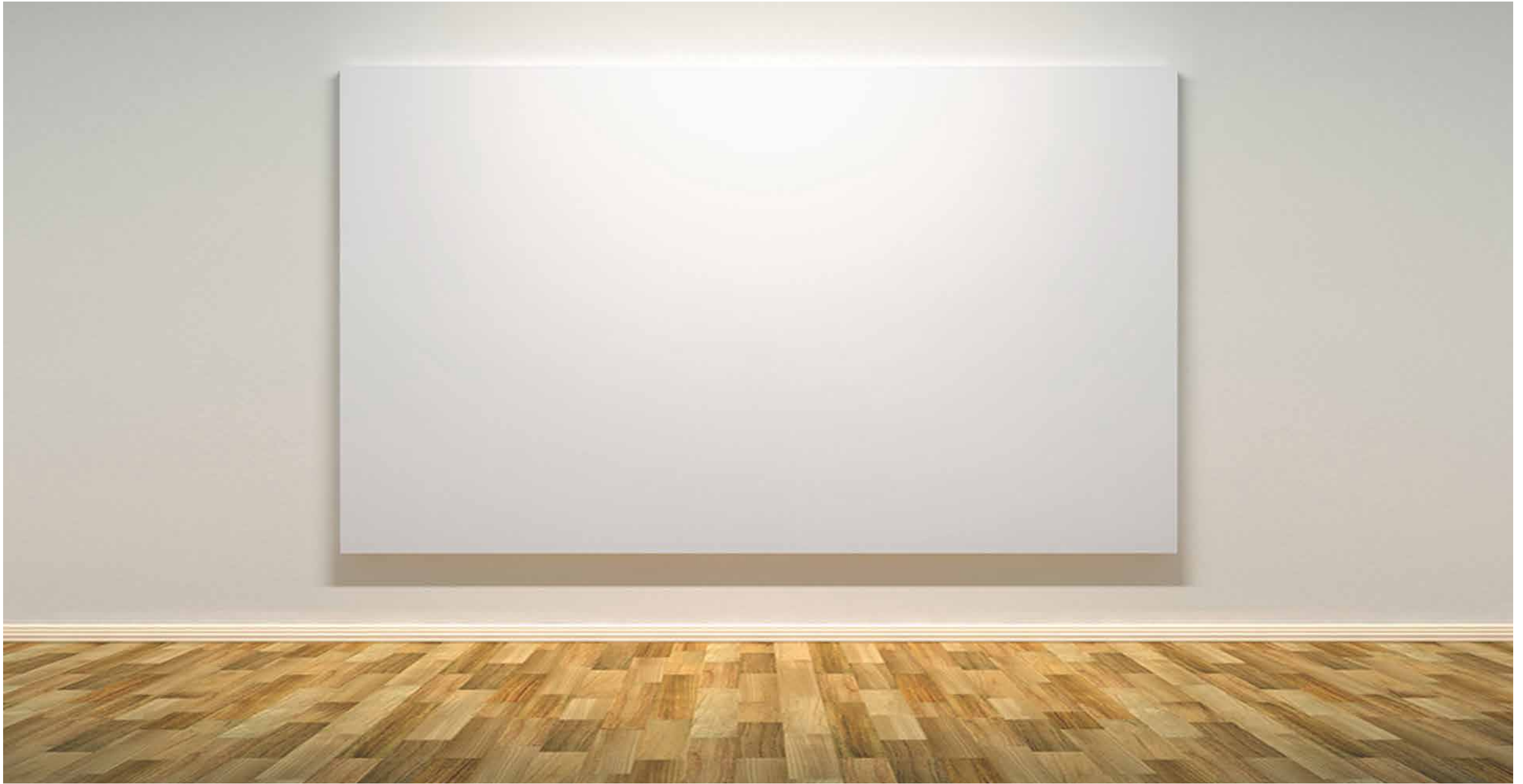
Creating memorable experiences
from the inside out.

Reflecting the unique qualities of
Sandy Springs

INPUT SESSIONS (SMALL GROUPS)

What would you prioritize?	Feedback and Input
<p style="text-align: center;">Less Imp. More Imp.</p>	
Direct walking connection to a park if available.	What do the arts in Sandy Springs represent to you?
Outdoor garden space	What does the new downtown represent to you?
Onsite visitor parking	What do Sandy Spring's parks mean to you?
Covered vehicle drop-off	How should the Cultural Center fit into the new downtown?
Cafe or similar food service (could be rotating/seasonal)	What kind of events can you imagine happening at the Center?
Outdoor event space	What kind of 'vibe' should the Cultural Center have?
Net Zero energy consumption	What else should the design team consider?
SANDY SPRINGS CULTURAL CENTER PUBLIC INPUT MEETING CITY OF SANDY SPRINGS 11.29.18	SANDY SPRINGS CULTURAL CENTER PUBLIC INPUT MEETING CITY OF SANDY SPRINGS 11.29.18

REVIEW OF INPUT SESSIONS



NEXT STEPS

Work Session in January:
Present findings from Input Meeting

Council Retreat in January:
Presentation of schematic design



THANK YOU FOR COMING OUT AND SHARING YOUR THOUGHTS.

