

Storm Outfalls

Dry Weather Screening Sites

as of Friday, November 16, 2018

Legend

● Dry Weather Screening Outfalls (625)

~ Creeks, Lakes, and Ponds

▭ Sandy Springs City Limits

▭ Chattahoochee River

Sandy Springs Watershed Areas

▭ Crooked Creek Watershed

▭ Long Island Creek Watershed

▭ Marsh Creek Watershed

▭ Nancy Creek Watershed

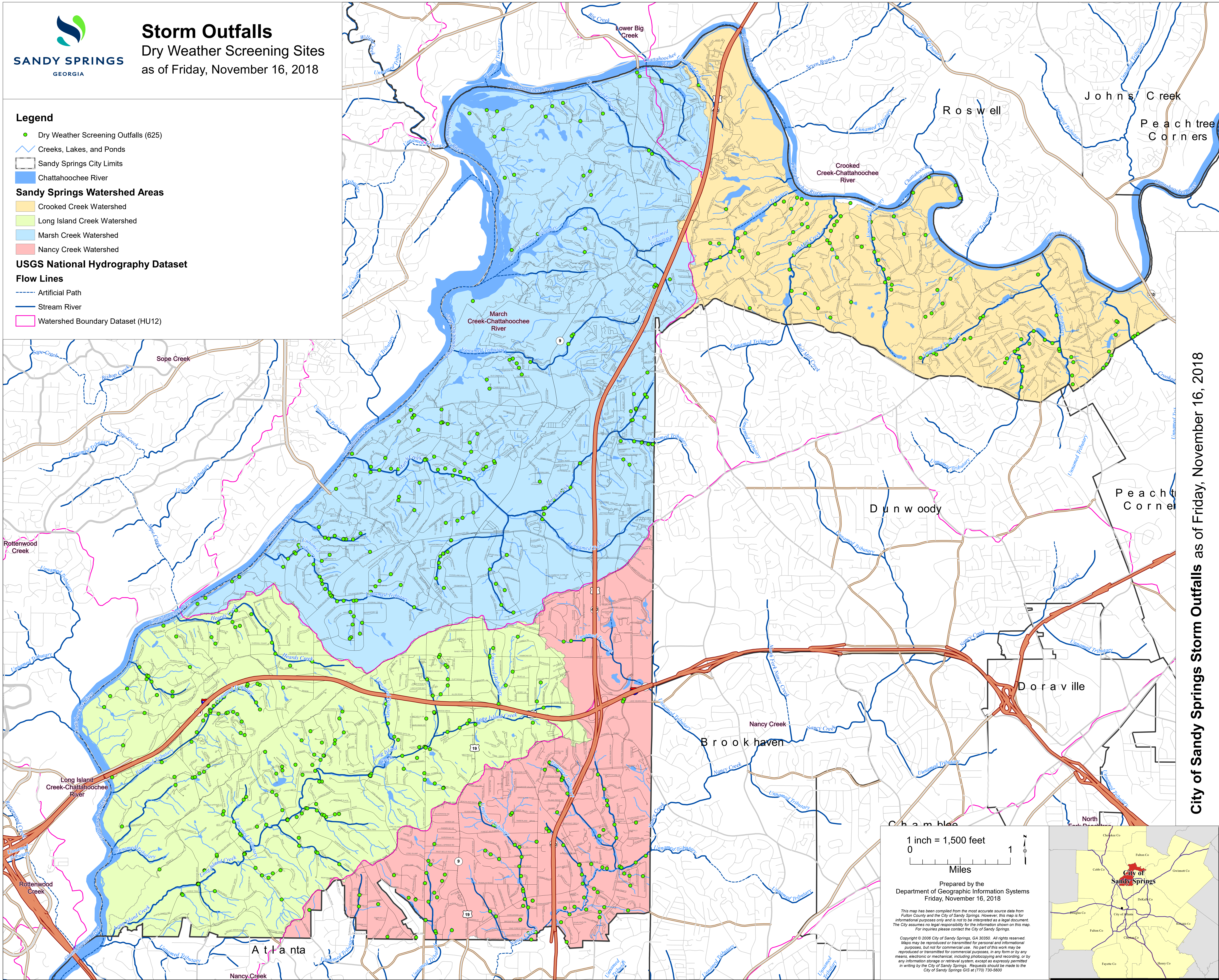
USGS National Hydrography Dataset

Flow Lines

--- Artificial Path

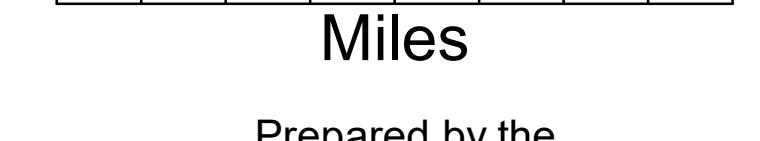
— Stream River

▭ Watershed Boundary Dataset (HU12)



City of Sandy Springs Storm Outfalls as of Friday, November 16, 2018

1 inch = 1,500 feet



Miles

Prepared by the
Department of Geographic Information Systems
Friday, November 16, 2018

This map has been compiled from the most accurate source data from Fulton County and the City of Sandy Springs. However, this map is for informational purposes only and is not to be interpreted as a legal document. The City assumes no legal responsibility for the information shown on this map. For queries please contact the City of Sandy Springs.

Copyright © 2006 City of Sandy Springs, GA 30350. All rights reserved. Maps may be reproduced or transmitted for personal and informational purposes, but not for commercial use. No part of this work may be reproduced or transmitted for commercial purposes, in any form or by any means, electronic or mechanical, including photocopying and recording, or by any information storage or retrieval system, except as expressly permitted in writing by the City of Sandy Springs. Requests should be made to the City of Sandy Springs GIS at (770) 730-5600.

