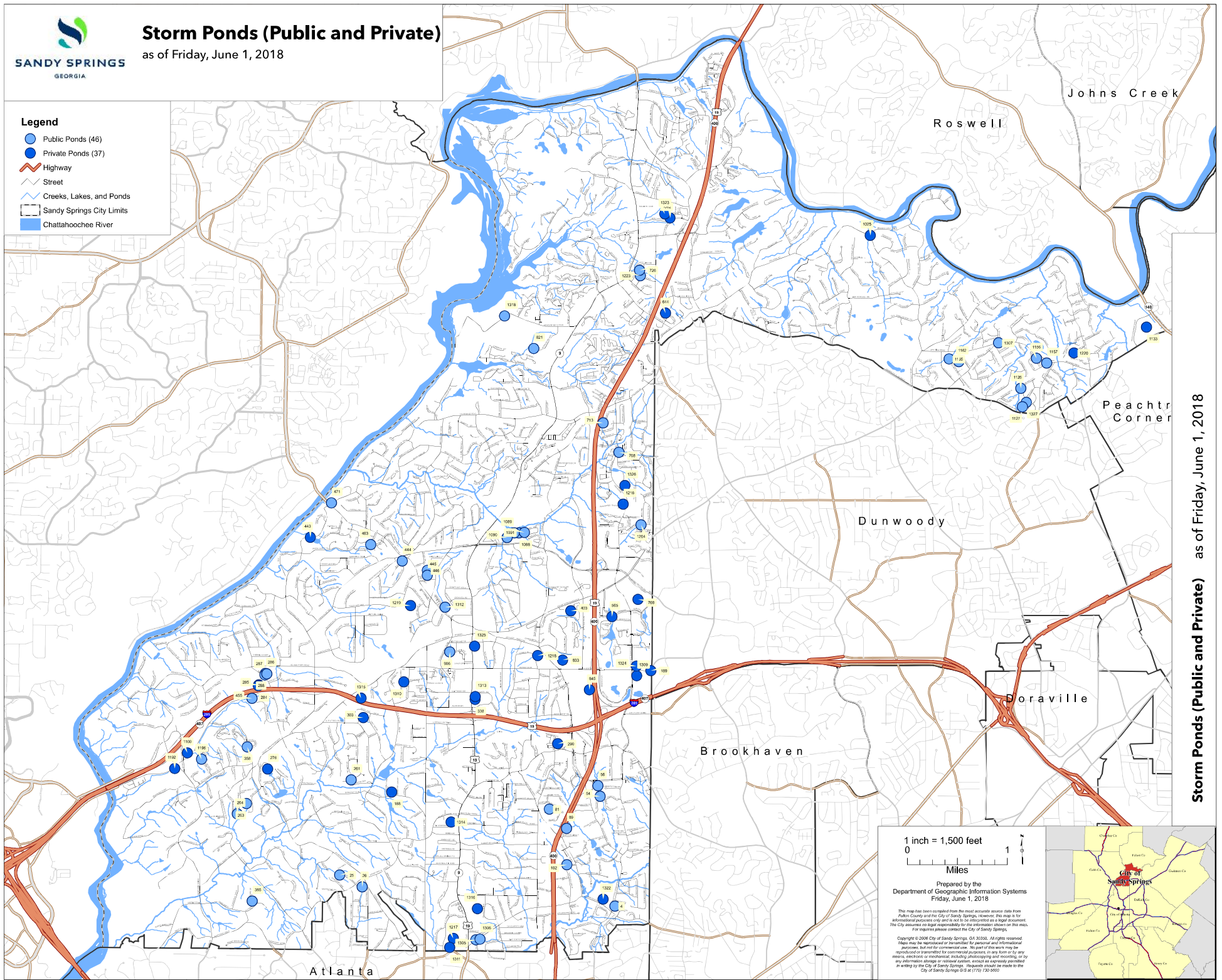


Storm Ponds (Public and Private)

as of Friday, June 1, 2018

- Legend**
- Public Ponds (48)
 - Private Ponds (37)
 - Highway
 - Street
 - Creeks, Lakes, and Ponds
 - Sandy Springs City Limits
 - Chattahoochee River



Storm Ponds (Public and Private) as of Friday, June 1, 2018

1 inch = 1,500 feet
0 1 Miles
Prepared by the
Department of Geographic Information Systems
Friday, June 1, 2018

This map has been compiled from the most accurate source data from Fulton County and the City of Sandy Springs. However, this map is for informational purposes only and is not to be construed as a legal document. The City assumes no legal responsibility for the information shown on this map. For more please contact the City of Sandy Springs.

Copyright © 2008 City of Sandy Springs, GA 30350. All rights reserved. Maps may be reproduced or transmitted for personal and informational purposes, but not for commercial use. No part of this work may be reproduced or transmitted in any form or by any means, electronic or mechanical, including photocopying and recording, or by any information storage or retrieval system, except as expressly permitted in writing by the City of Sandy Springs. Requests should be made to the City of Sandy Springs GIS at (770) 730-6550.



Atlanta

Dunwoody

Brookhaven

Doraville

Roswell

Johns Creek

Peachtree Corner