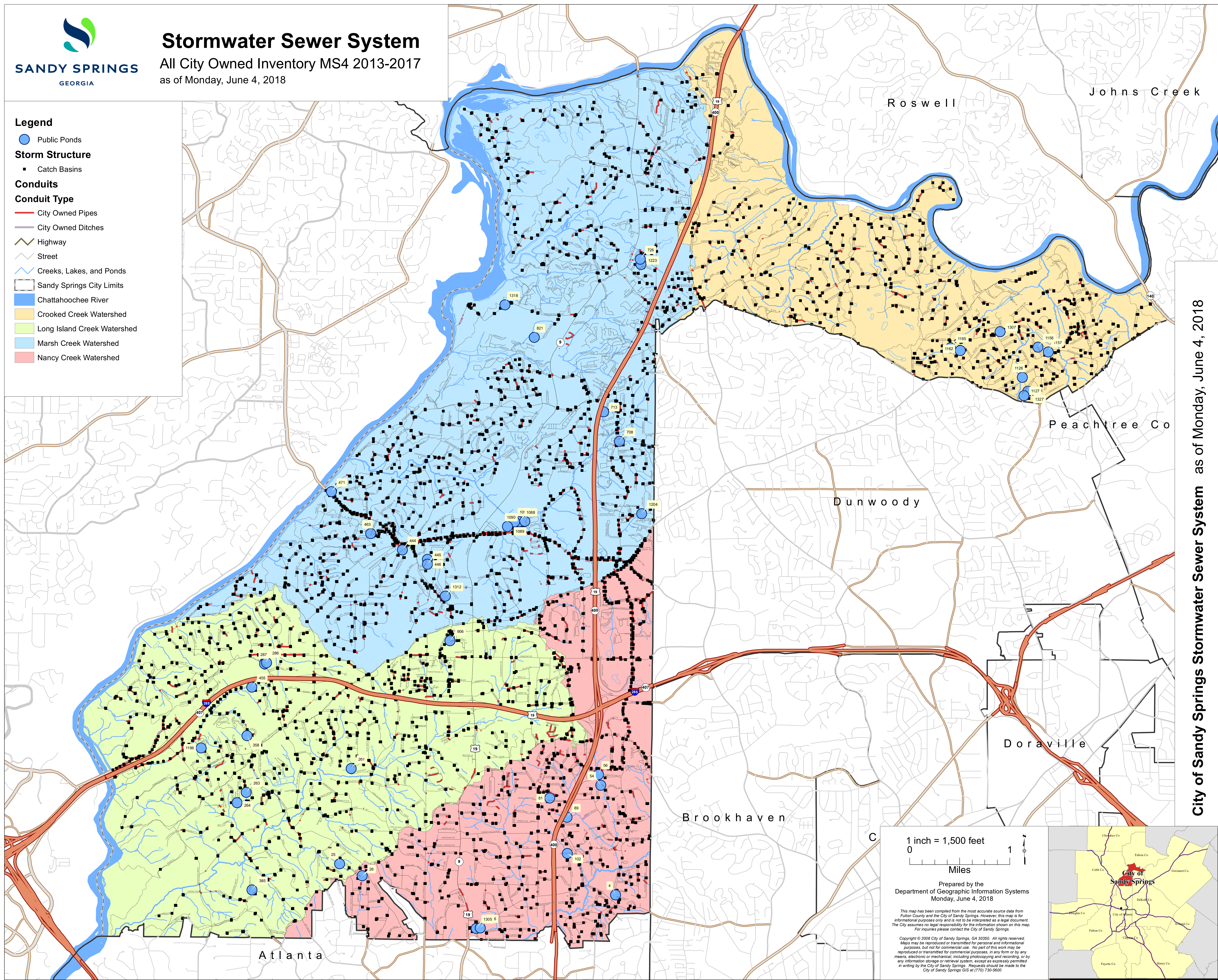


Stormwater Sewer System

All City Owned Inventory MS4 2013-2017
as of Monday, June 4, 2018

- Legend**
- Public Ponds
 - Storm Structure**
 - Catch Basins
 - Conduits**
 - Conduit Type**
 - City Owned Pipes
 - City Owned Ditches
 - Highway
 - Street
 - Creeks, Lakes, and Ponds
 - ▭ Sandy Springs City Limits
 - ▭ Chattahoochee River
 - ▭ Crooked Creek Watershed
 - ▭ Long Island Creek Watershed
 - ▭ Marsh Creek Watershed
 - ▭ Nancy Creek Watershed



City of Sandy Springs Stormwater Sewer System as of Monday, June 4, 2018

1 inch = 1,500 feet
0 1
Miles

Prepared by the
Department of Geographic Information Systems
Monday, June 4, 2018

This map has been compiled from the most accurate source data from Fulton County and the City of Sandy Springs. However, this map is for informational purposes only and is not to be interpreted as a legal document. The City assumes no legal responsibility for the information shown on this map. For inquiries please contact the City of Sandy Springs.

Copyright © 2008 City of Sandy Springs, GA 30350. All rights reserved. Maps may be reproduced or transmitted for personal and informational purposes, but not for commercial use. No part of this work may be reproduced or transmitted for commercial purposes, in any form or by any means, electronic or mechanical, including photocopying and recording, or by any information storage or retrieval system, except as expressly permitted in writing by the City of Sandy Springs. Requests should be made to the City of Sandy Springs GIS at (770) 730-5600.

