



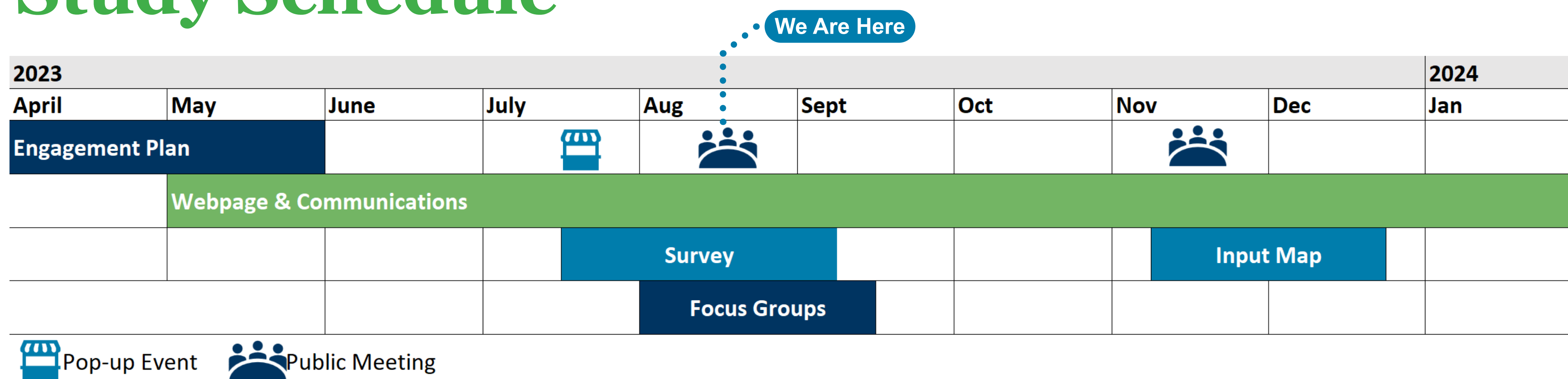
OVERVIEW

The Powers Ferry Area serves as the western gateway to the City of Sandy Springs. It includes a regional employment center, residential neighborhoods, small-scale retail, and access to the Chattahoochee River National Recreation Area. This study conducts a technical transportation evaluation that builds off recommendations from the 2016 Powers Ferry Small Area Plan.

Transportation Study Goals

- Identify improvements to the Powers Ferry area to support pedestrian, bicycle, transit, and vehicular travel.
- Develop a plan to move projects and strategies forward.
- Determine the feasibility and costs associated with implementation.

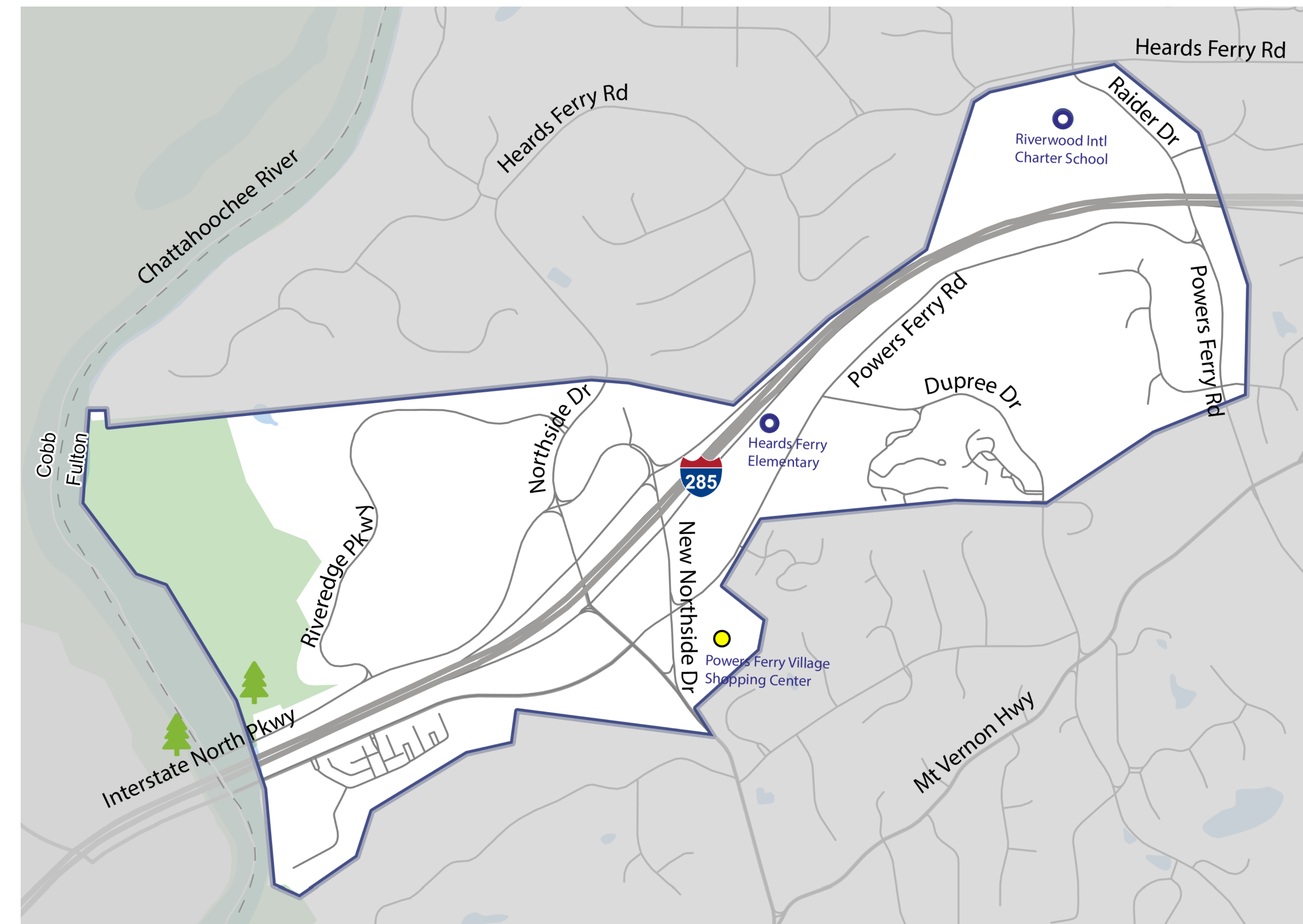
Study Schedule



How would you prefer to get around this area?

BIKE	CAR	TRANSIT	WALKING	OTHER

Study Area



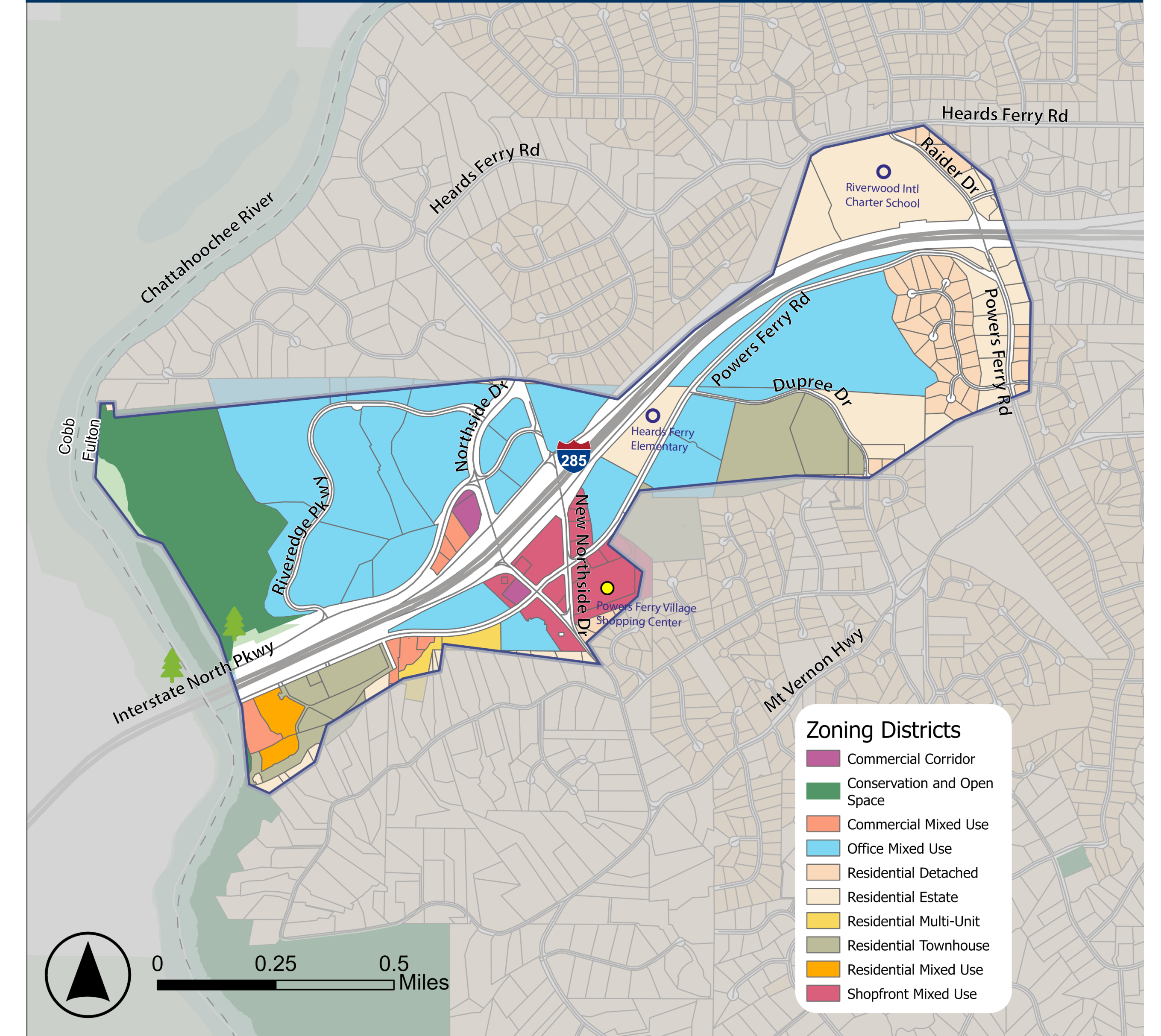


WHERE DO YOU TRAVEL?

STUDY AREA



EXISTING LAND USE

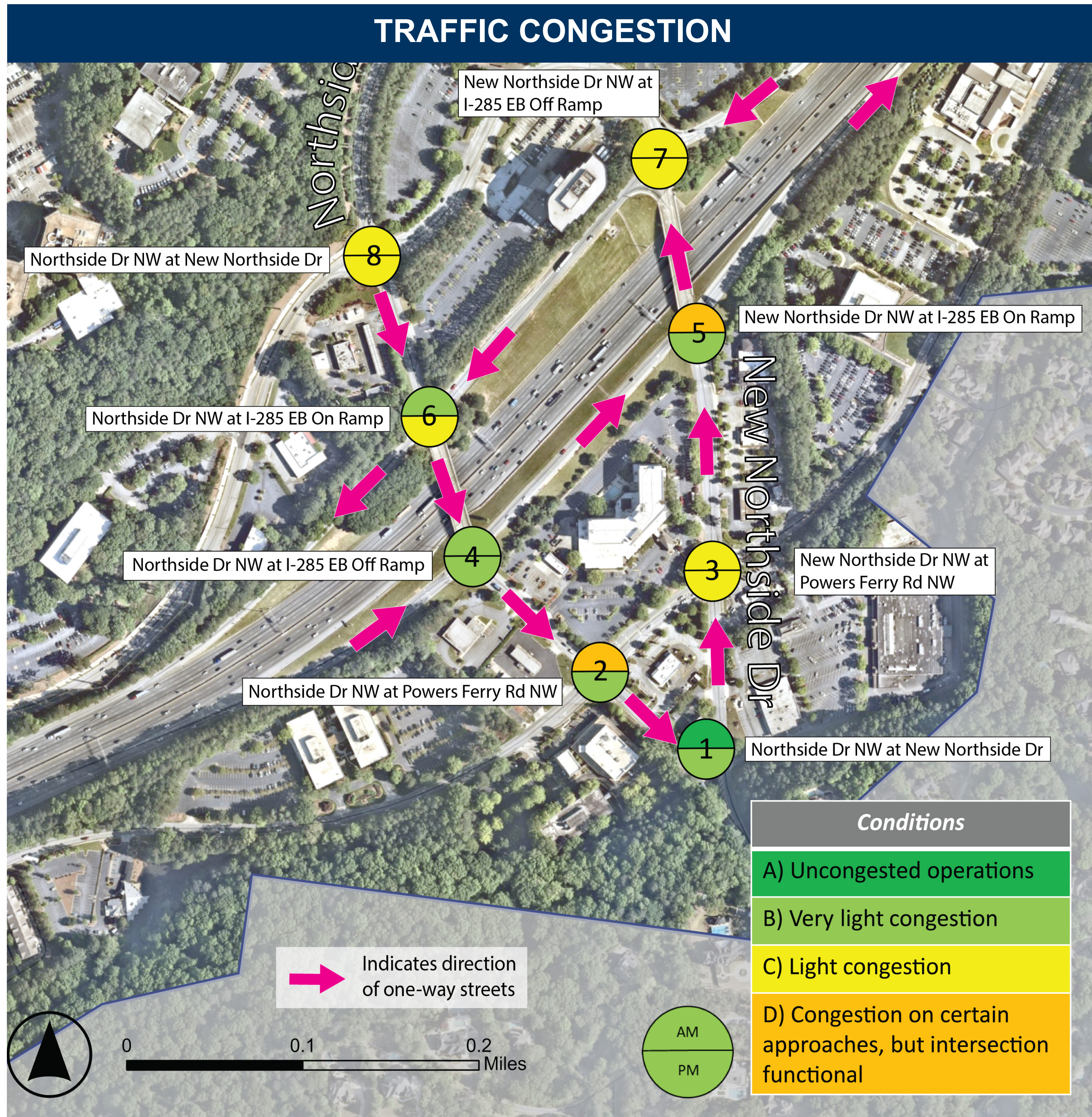


We Want to Hear from You!

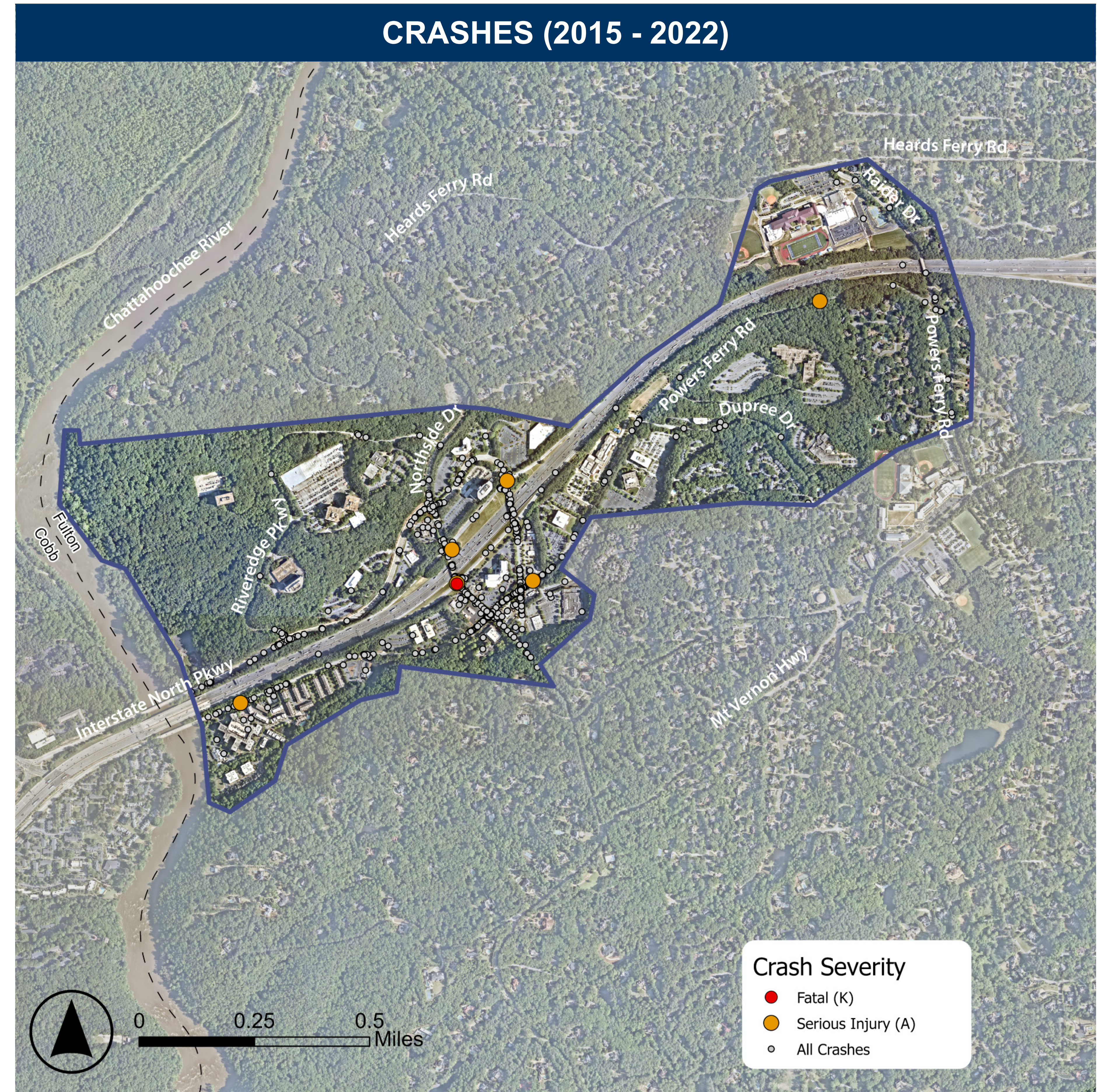
Place dots to show us where you go within the area. Write your number on your dots.

- Place a yellow dot where you enter the study area.
- Place a green dot where you go for work, shopping, or recreation.

Additional Comments?
Post a note on the map!



Highlights
Existing intersections on roadways provide excess capacity during most hours of the day.



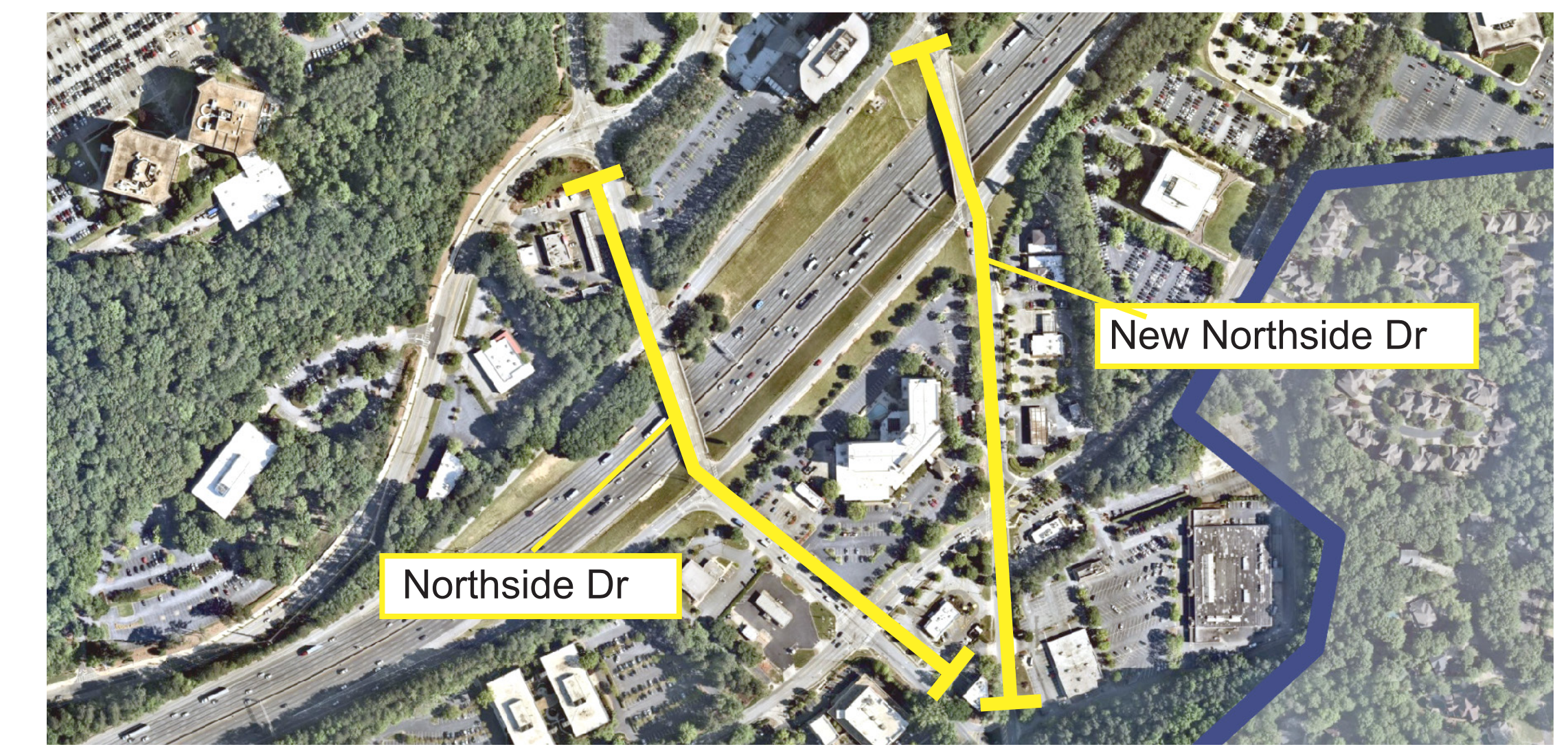
We Want to Hear from You!

- Place a yellow dot where you experience congestion.
- Place a blue dot in locations that you think are unsafe.

*Additional Comments?
Post a note on the map!*



Repurposing Northside Drive & New Northside Drive



	EXISTING CONDITIONS	ALLOCATE SPACE FOR WALKING/BIKING	TWO-WAY NETWORK
NORTHSIDE DR			
NEW NORTHSIDE DR			
	<p><i>Existing Conditions</i></p> <p>Northside Drive & New Northside Drive</p> <ul style="list-style-type: none"> • 12 ft travel lanes • 5 ft sidewalk on one side • No bicycle facilities 	<p><i>What Changed?</i></p> <ul style="list-style-type: none"> • One-way pair traffic is preserved with reduced travel lanes to provide space for a new multi-use facility • Reduced travel lane width to 11 ft • Added 10 ft shared-use path on one side • Added 5 ft sidewalk on one side • Two bridges over I-285: removed one travel lane to accommodate the side path <p><i>Note: Dimensions are subject to change</i></p>	<p><i>What Changed?</i></p> <ul style="list-style-type: none"> • Two-way traffic with reduced travel lanes to provide space for a new multi-use facility • Reduced travel lane width to 11 ft • Added 10 ft shared-use path on one side • Added 5 ft sidewalk on one side • The two bridges over I-285 would require bridge widening to accommodate a shared-use path <p><i>Note: Dimensions are subject to change</i></p>

We Want to Hear from You! Add dots and comments below to share your preferences.

I like this			
I don't like this			
Comments			

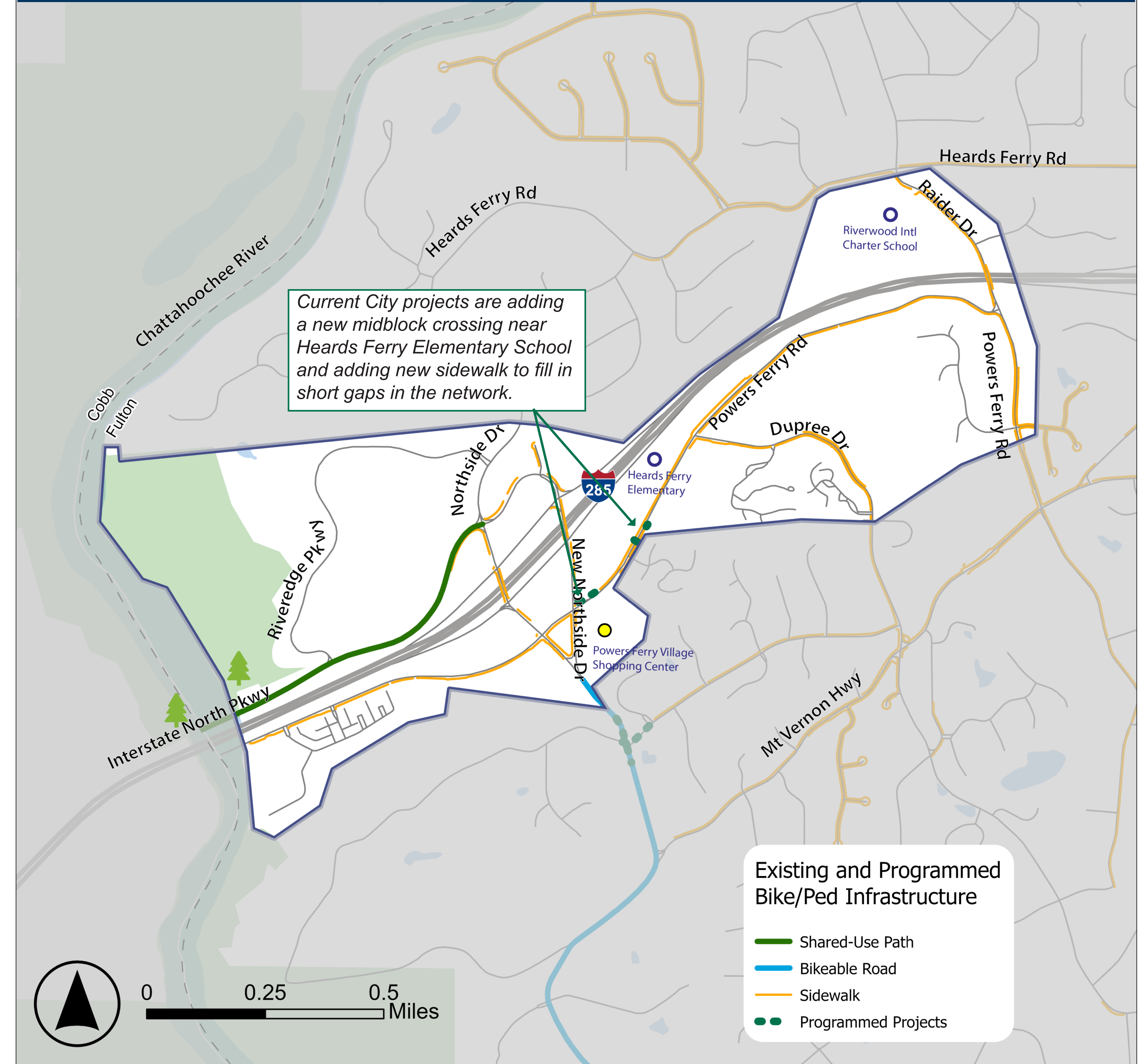


BICYCLE AND PEDESTRIAN

BIKING AND WALKING IN POWERS FERRY



BICYCLE & PEDESTRIAN INFRASTRUCTURE



We Want to Hear from You!

Where Do You Bike/Walk?

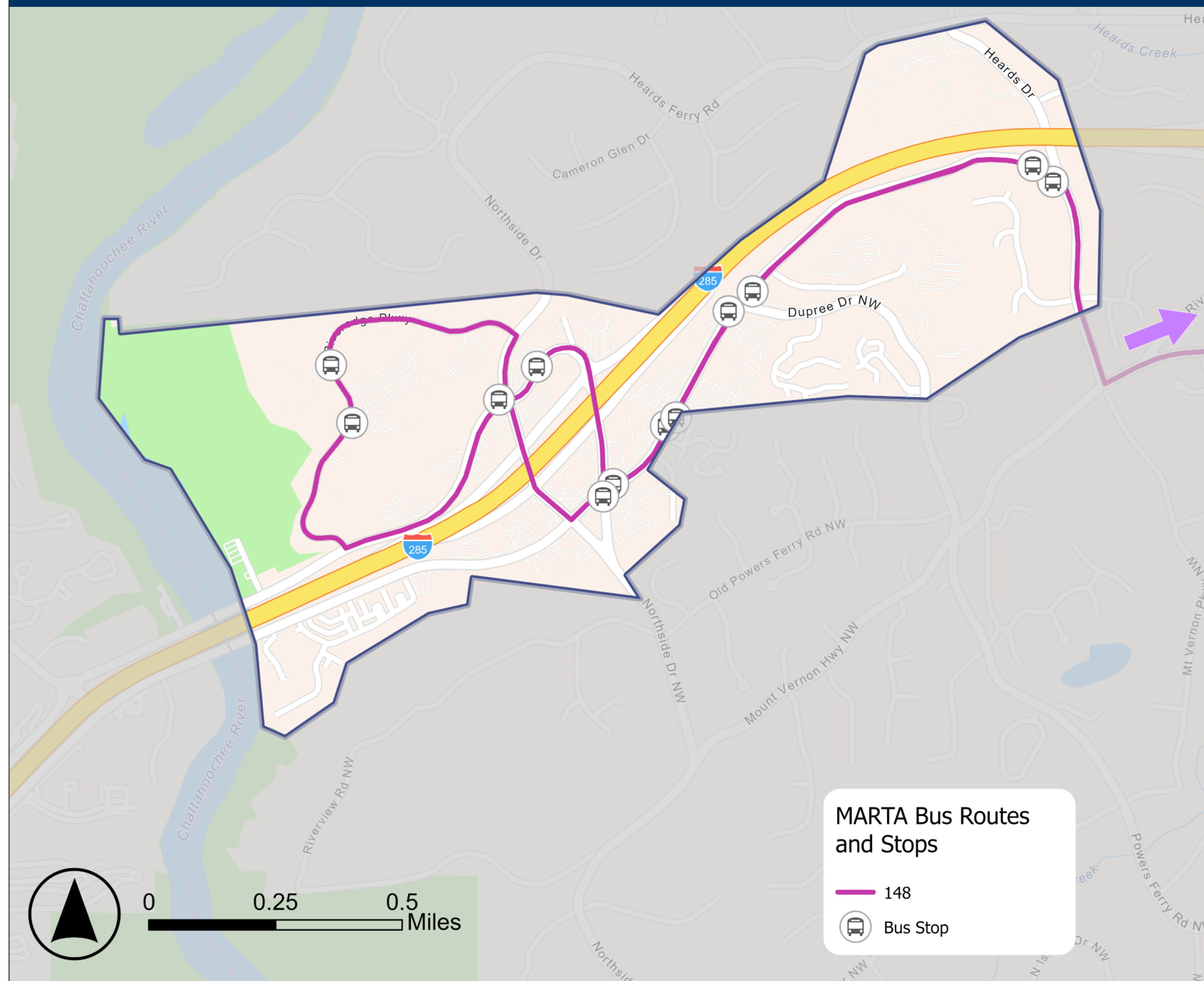
- I walk here.
- I bike here.

We Want to Hear from You!

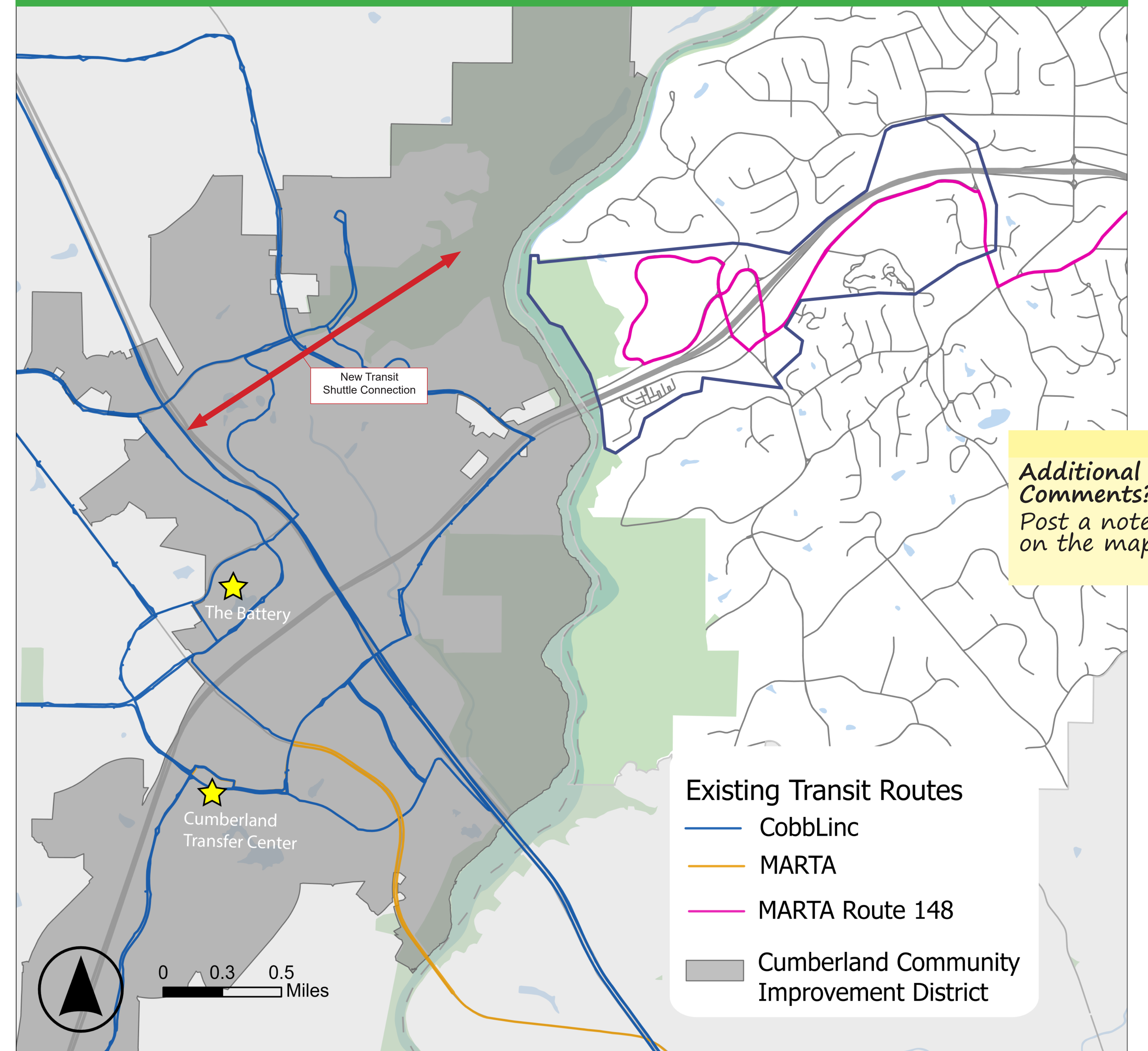
What Bike/Pedestrian Improvements are Needed?

Post a note on the map!

EXISTING SERVICE AND STOP IMPROVEMENTS



POTENTIAL NEW CONNECTIONS AND BUS STOPS



Additional Comments?
Post a note on the map!

We Want to Hear from You!

Fewer than 30 people use transit in the Study Area each day. We've identified some ideas to increase ridership below. *Place a dot by those ideas you support.*

Increased frequency: Changing bus service to run more often than hourly.

Route adjustments: Adjusting the bus route to serve more residents in west Sandy Springs.

Stop upgrades: Upgrading stops by adding benches or cover, improving sidewalks, and/or moving stops.

Where Would You Like to Travel Using Transit?

Place a dot by all that apply!

Cobb County, Cumberland, Battery

Downtown Atlanta

MARTA Rail Stations

Other

Perimeter Employment Center