

CURRENT CONSTRUCTION ACTIVITIES

LAST WEEK

- Continued Setting Structural Steel and Decking at the Apparatus Bay
- Continued Interior and Exterior CMU Walls
- Continued MEP Interior Wall Rough-in
- Continued MEP Overhead Rough-in at the First Floor
- Layout of Cold-Formed Interior Walls at the Second Floor

THIS WEEK

- Continue MEP in-wall Rough-in
- Continue MEP Overhead Rough-in at the First Floor
- Continue Interior and Exterior CMU Walls

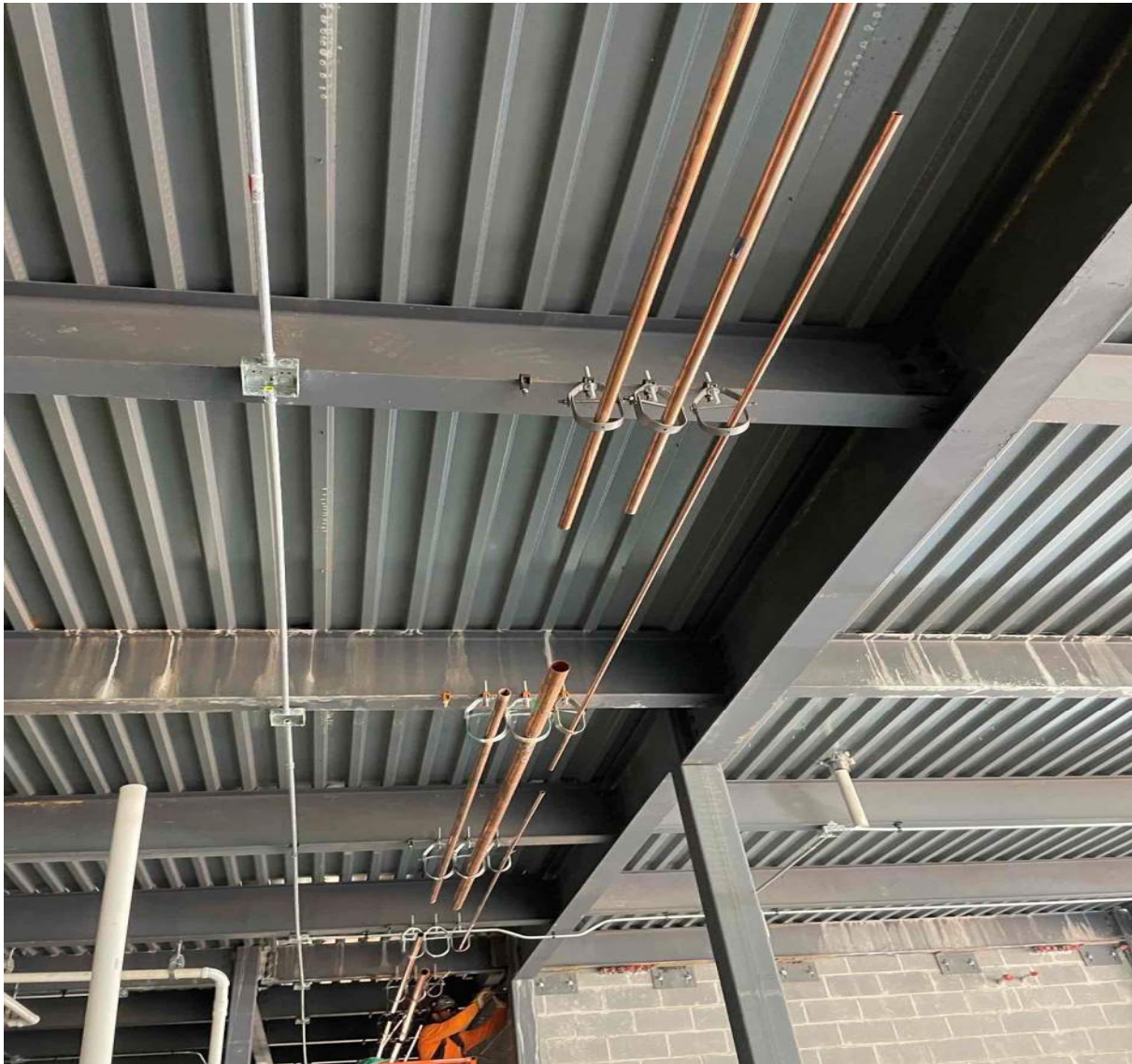
+ JOBSITE PHOTOS



Continuing Structural Steel at Apparatus Bay Roof



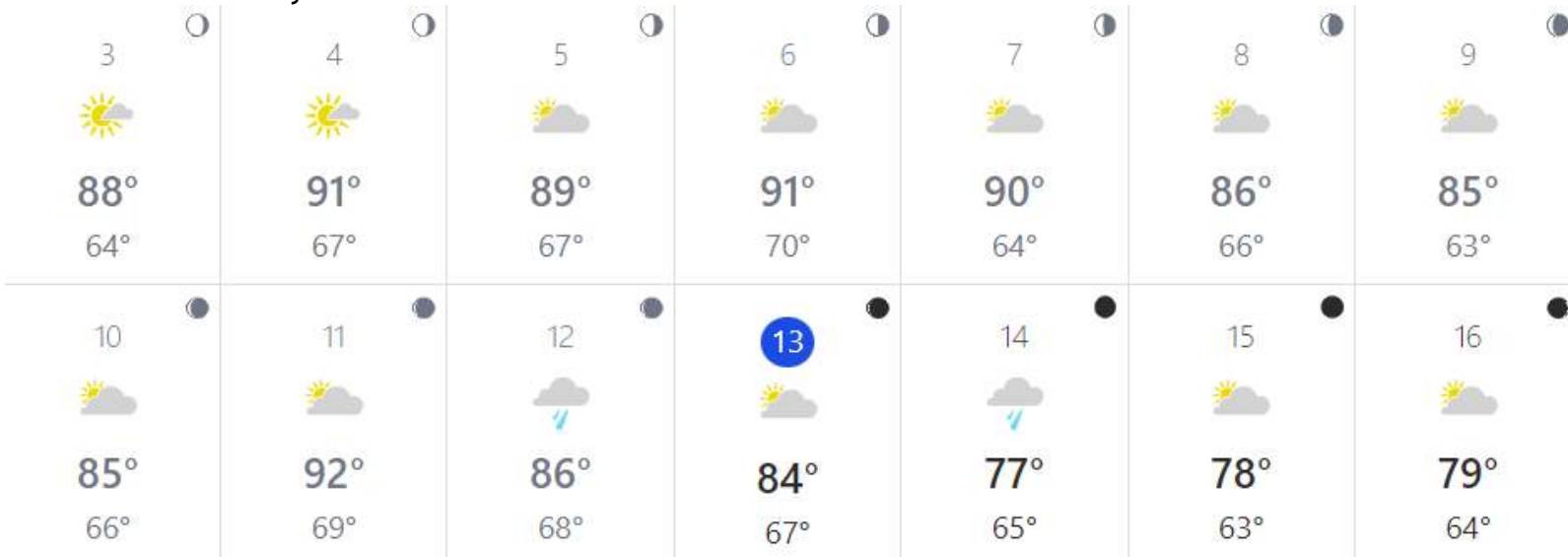
Continuing Installation of Exterior CMU at the Electrical / Generator Rooms



Continuing MEP Overhead Rough-in at the First Floor

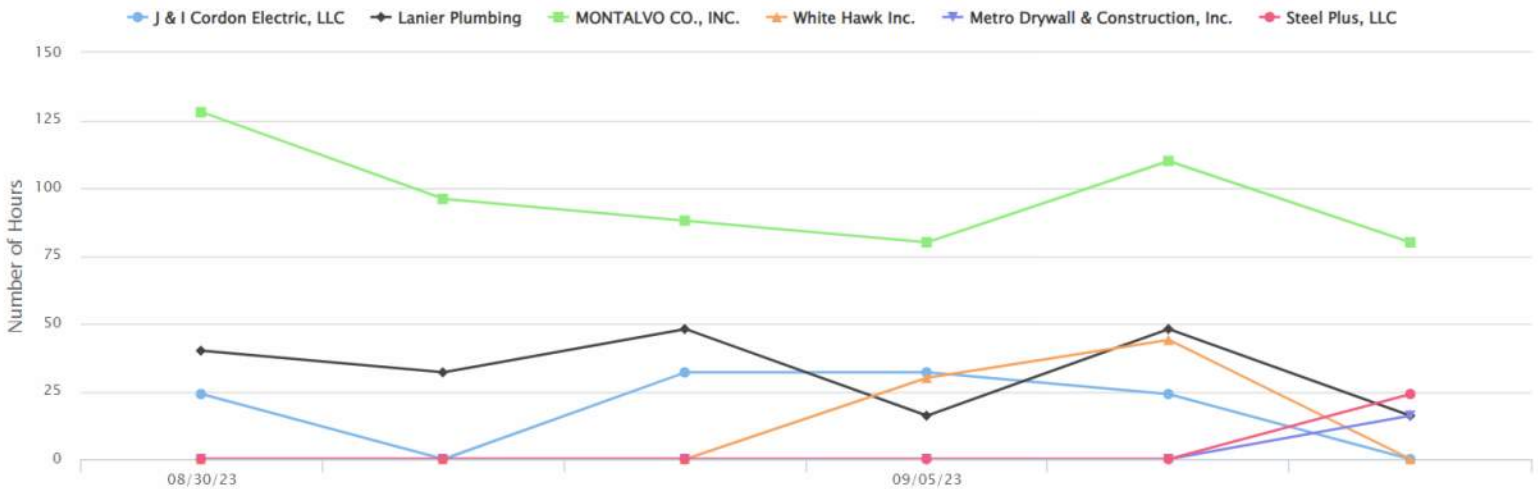
WEATHER

Weather delays last week: 0



MANPOWER

MANPOWER GRAPH



SAFETY REPORT

- Days without an accident: 107
- Days without lost time: 107

MILESTONE TRACKING

- Construction Start: April 10, 2023
- Current Contract Completion Date: June 10, 2024