

CURRENT CONSTRUCTION ACTIVITIES

LAST WEEK - WEEK ENDING 02/17/2024

Roof

- Continue parapet/coping blocking

Level 3

- Plumbing Overhead & in-wall rough in
- Electrical Overhead & in-wall rough in
- Exterior Framing/Sheathing
- Beam Augmentation (South Elevation)
- Mechanical Tie-in/Duct insulation
- Installing Brick Lintel/Kicker assembly (North elevation)
- Install hard ceiling grid at new & existing bathrooms
- Coring holes through slab for floor to floor copper line sets for condenser/mini-splits

Level 2

- Beam Augmentation (South Elevation)
- Mechanical Tie-in
- Exterior Framing/Sheathing
- Mechanical, Electrical, Plumbing Overhead & in-wall rough in
- Installing Brick Lintel/Kicker assembly (North elevation)
- Demo punch (curtain wall steel at entrance/exit of building)

Level 1

- Beam Augmentation (South Elevation)
- Exterior Framing/Sheathing
- Mechanical, Electrical, Plumbing Overhead & in-wall rough in
- Begin Installing Brick Lintel/Kicker assembly (North elevation)
- Set exterior door at elevated catwalk (Northwest elevation)
- Demo existing hand rails at stairs 2&3 (levels 1-3)
- Installing new hand rails stairs 2 & 3 (levels 1-3)
- Demo punch

Basement

- Mechanical Overhead & in-wall rough in
- Begin slab cut/removal to replace Under Grounding sanitary sewer piping

Site Engineering & Xylem

- Tie-in bypass piping, initiate bypass at 9:00 AM 2/14/24
- Set new doghouse manhole over existing sanitary sewer gravity line
- Begin replacing existing gravity sanitary sewer line following bypass tie-in & setting of new doghouse manhole

THIS WEEK - WEEK ENDING 02/24/2024

Roof

- Continue parapet blocking
- Screen wall steel install

Level 3

- Plumbing Overhead & in-wall rough in
- Electrical Overhead & in-wall rough in
- Mechanical Tie-in/Duct insulation
- Exterior Framing/ Sheathing
- Installing Brick Lintel/Kicker assembly (South elevation)
- Installing 4x4 tube steel to replace previously demoed "X" bracing at existing bathrooms

Level 2

- Mechanical, Electrical, Plumbing Overhead & in-wall rough in
- Mechanical Tie-in/Duct insulation
- Exterior Framing/Sheathing
- Installing Brick Lintel/Kicker assembly (South elevation)
- Interior Framing

Level 1

- Mechanical, Electrical, Plumbing Overhead & in-wall rough in
- Mechanical Tie-in/Duct insulation
- Exterior Framing/Sheathing
- Finish Installing new hand rails Stairs 2&3 (Levels 1-3)
- Demo existing & Install new hand rails Stair 1 (Levels 1-3)
- Begin interior framing

Basement

- Mechanical, Electrical, Plumbing Overhead & in-wall rough in
- Continue Slab cut/removal/replacement of U/G sanitary sewer piping
- Fireproofing (elevator room)

Exterior

- Continue installing storm line "C" working towards bio-cell
- Demo mechanical yard a South East side of site
- Begin excavating/forming/setting rebar for courtroom/admin wing footings

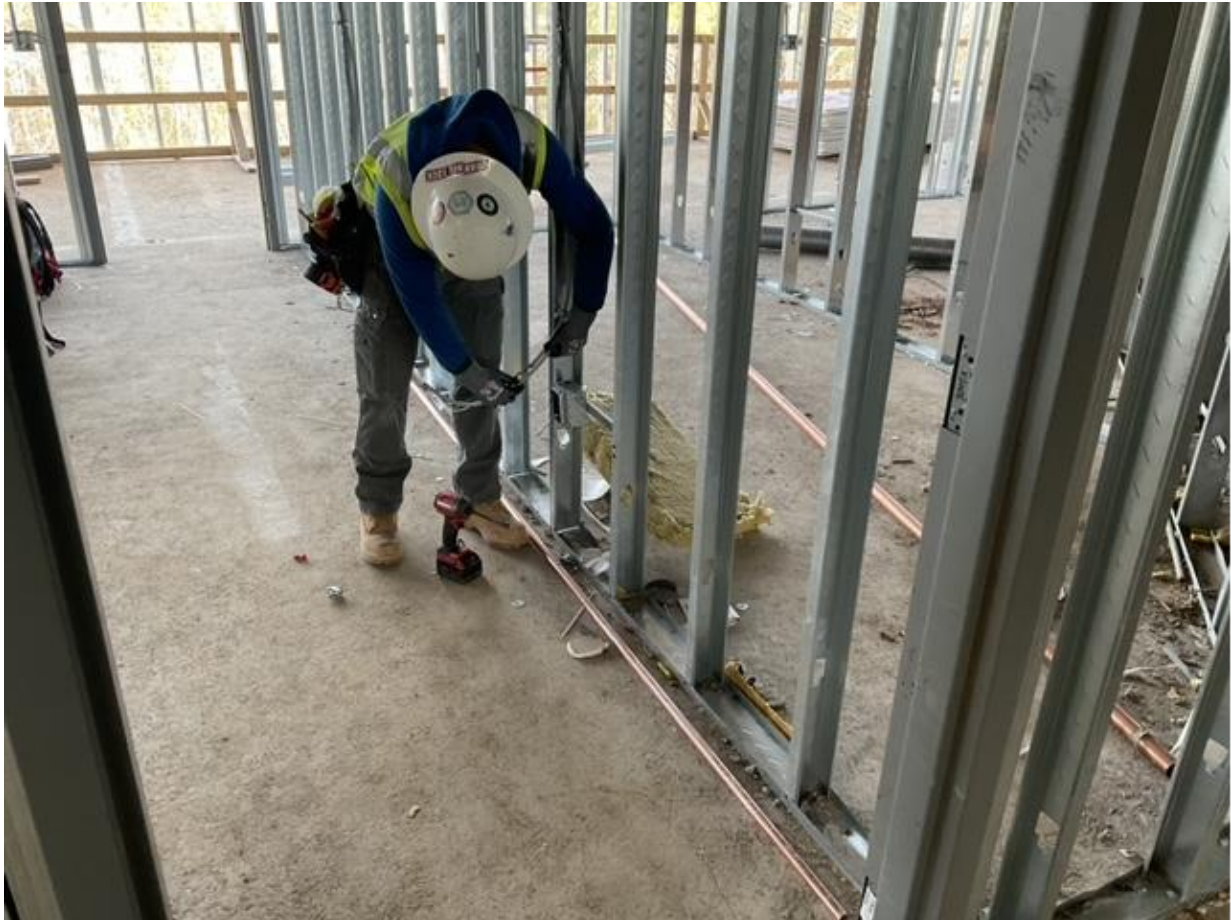
Site Engineering & Xylem

- Setting additional manhole at toe of slope nearest to existing FM to gravity transition manhole
- continue replacing existing gravity sanitary sewer line following bypass tie-in

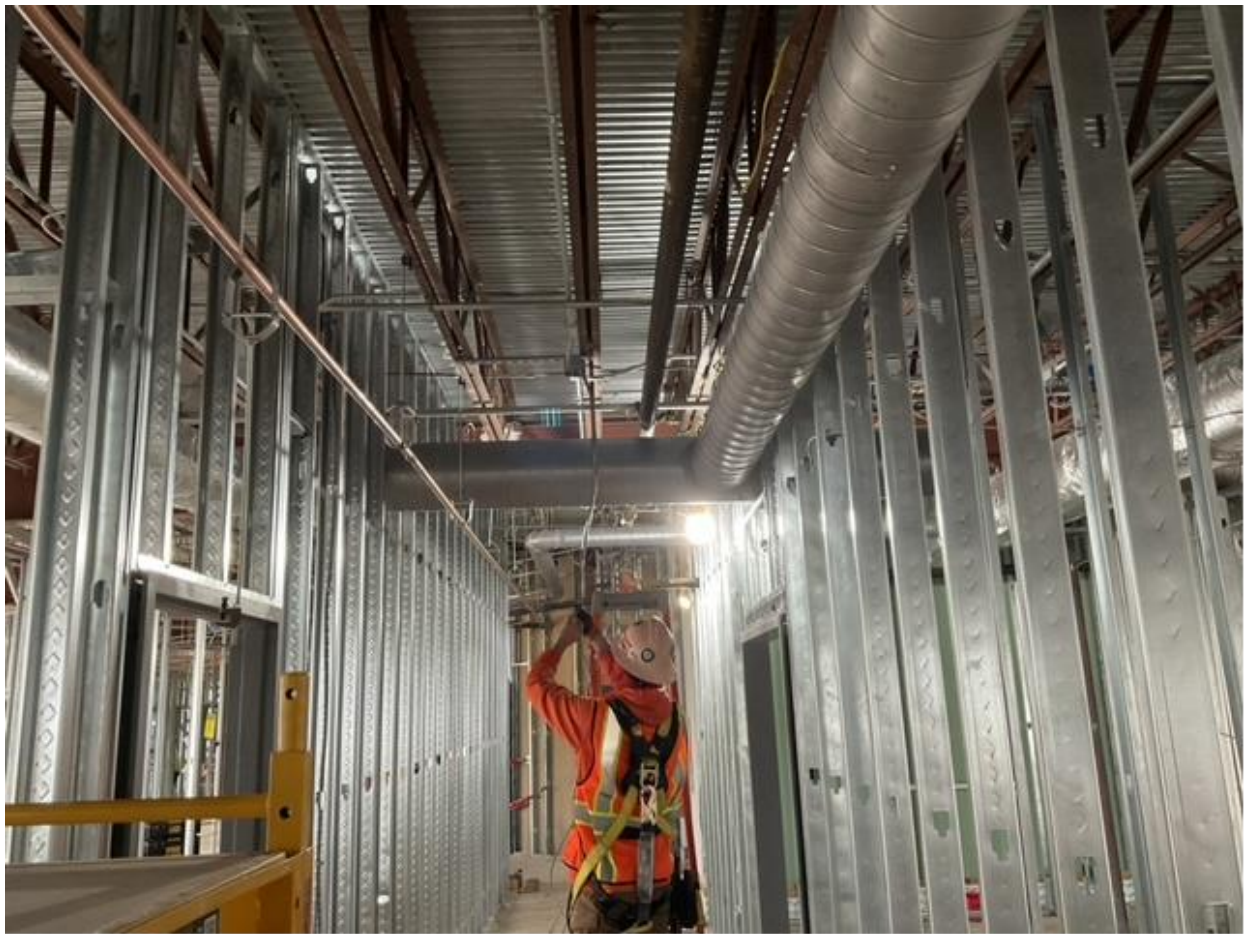
JOBSITE PHOTOS



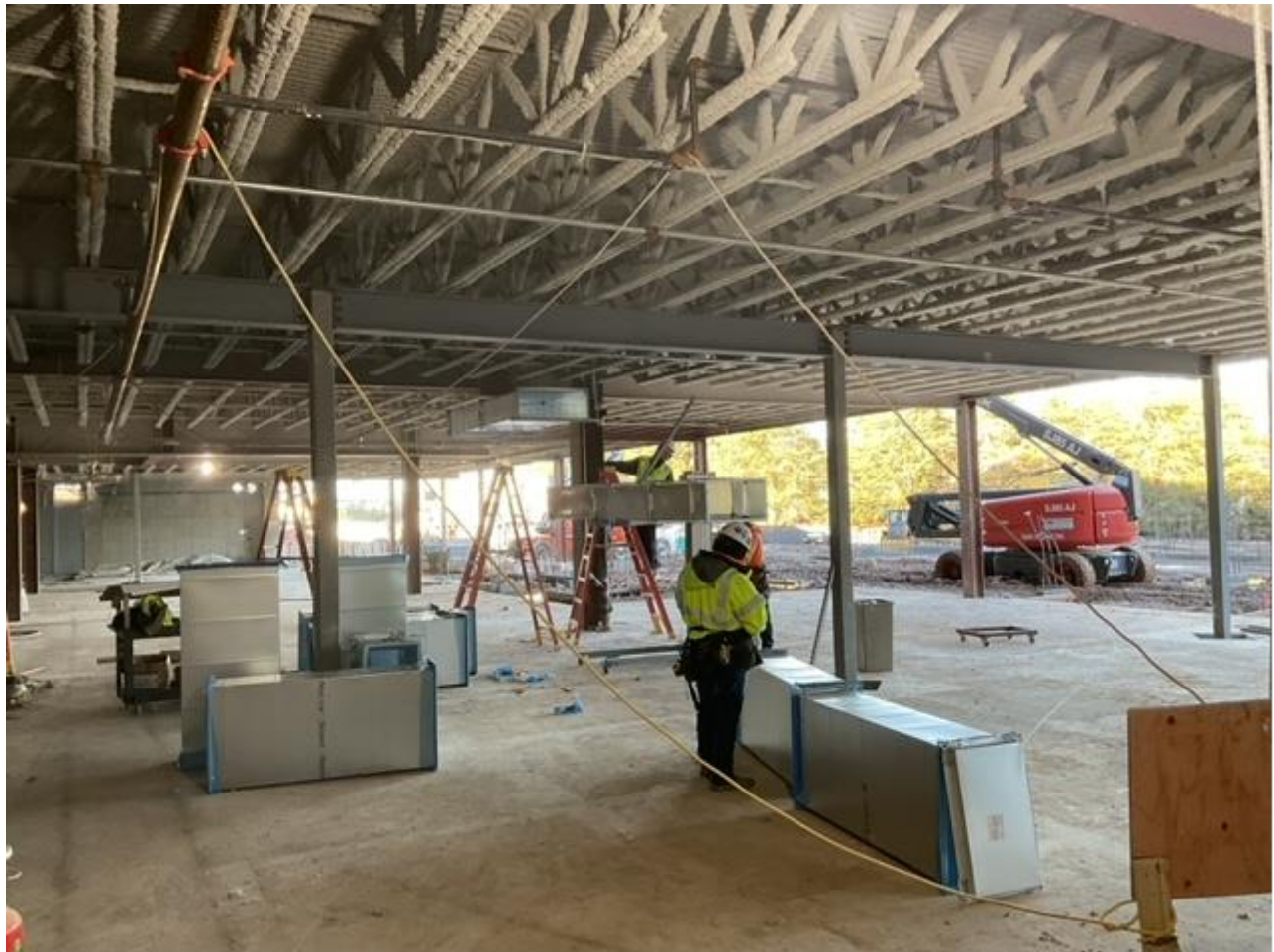
In Wall Plumbing Rough-In



In-Wall Electrical



Electrical Rough-In



Mechanical O/H And R/I - Basement



Brick Lintel Installation (North Elevation)



Parapet Wall Blocking



Mechanical Rough-In - First Floor



U/G Sanitary Sewer Remediation - Basement



Hand Rail Demo And Install



Force Main & Gravity Sewer Bypass



Basement Slab Removal



New Doghouse Manhole Set Over Existing Gravity Sewer Line (Fulton County)



Overhead Mechanical Rough-In

















Duct Insulation



Replacing Existing Gravity Sewer Piping

 WEATHER

Weather delays this week: 0

11  66° 57°	12  59° 39°	13  Monthly Weather 56° 35°	14  66° 35°	15  69° 45°	16  65° 42°	17  47° 29°
18  53° 35°	19  61° 31°	20  61° 34°	21  63° 39°	22  69° 53°	23  63° 39°	24  57° 34°

- Total Weather Delays: 12

SAFETY REPORT

- Days without an accident: 155
- Days without lost time: 155

MILESTONE TRACKING

- Construction Start: August 21, 2023
- Current Contract Completion Date: Mar 14, 2025