

CURRENT CONSTRUCTION ACTIVITIES

LAST WEEK - WEEK ENDING 03/30/2024

Roof:

- Screen wall steel install
- Roof demo / New roof install / installing walk pads
- MEP R/I as new roof is installed

Level 3:

- Setting of window frames
- Copper lines for rooftop condenser units
- Low voltage R/I
- Installing plywood blocking at required locations

Level 2:

- Setting window frames
- CMU courses for holding cell/ elevator area
- Low voltage R/I

Level 1:

- MEP-R/I-O/H & In-wall
- Exterior Framing/Sheathing
- interior framing (curtain wall/store front)
- Slab demo for elevator CMU extension
- CMU courses for holding cell/ elevator area
- Low Voltage R/I

Basement:

- CMU Courses/ Masonry door installs at holding cell/elevator area
- MEP O/H R/I
- Setting additional interior columns/beams

Exterior/Sallyport:

- Plumbing & electrical R/I at cmu walls/ mechanical block-outs
- Water Proofing exterior Sheathing/ exposed BG masonry & CIP walls (per RFI 071)
- Back filling around exterior of building after waterproofing was applied (per RFI 071)
- Rebar/formwork/pour retaining wall B (poured 3/29)
- Rebar/formwork/pour for foundation wall at Court/Admin wing addition (poured 3/29)
- Setting sequence 6 steel at Sally port addition
- Rebar/water vapor barrier and termite control installed at portion of Sally port slab
- Under slab electrical & plumbing R/I at portion of slab in handlers work area
- Porter Steel began removing portions of exterior brick ledge at window openings to allow proper return of exterior facade

THIS WEEK - WEEK ENDING 04/06/2024

Roof:

- Screen wall steel support install
- Finishing boot patches around screen wall steel as Porter installs
- Pour concrete at stair 1 extension (steps & landings)

Level 3:

- Setting of window frames
- Copper lines for rooftop condenser units
- Low voltage R/I
- Sheetrock/insulation began 4/1/24
- Electrical R/I adjustments based on Bulletin #5 & requests made by low voltage subcontractors

Level 2:

- Setting window frames
- CMU courses for holding cell/ elevator area
- Low Voltage R/I
- Electrical R/I adjustments based on Bulletin #5 & requests made by low voltage subcontractors
- Framing/Electrical R/I adjustments at RTCC
- Joist removal at elevator shaft via shoring and bent plate installation

Level 1:

- MEP-R/I-O/H & In-wall
- Exterior Sheathing
- interior framing (curtain wall/store front)
- Low voltage R/I
- Joist removal at elevator shaft via shoring and bent plate installation

Basement:

- MEP O/H R/I
- Finished fireproofing

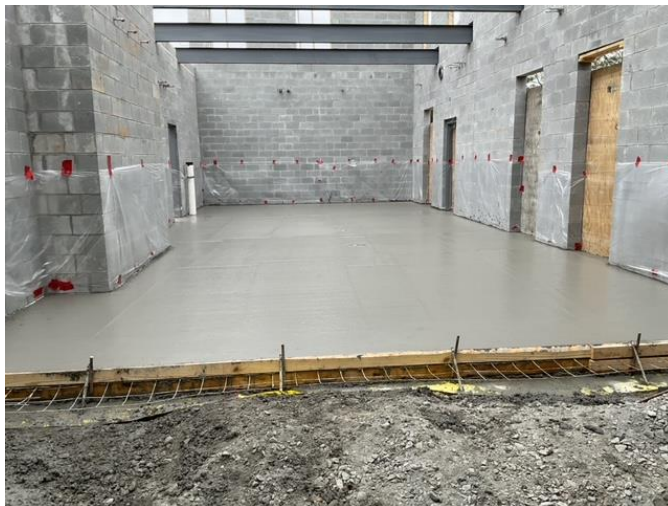
Exterior/Sallyport:

- electrical R/I at cmu walls/ mechanical block-outs
- Water Proofing exterior Sheathing
- Wreck formwork at retaining wall B
- Wreck formwork foundation wall at Court/Admin wing addition
- Setting sequence 6 steel at Sally port addition
- Concrete pour portion of slab at sallyport (poured 4/1)
- Excavating for FTGs at Court/Admin Wing addition

Site Engineering(Fulton County)

- Crew back on site this week (4/1/24) to begin potholing existing utilities in ROW on Morgan Falls Rd. prepping for bypass continuation across roadway
- Crew plans to initiate new bypass and begin setting new sanitary MH on SSPHQ property by 4/15/24

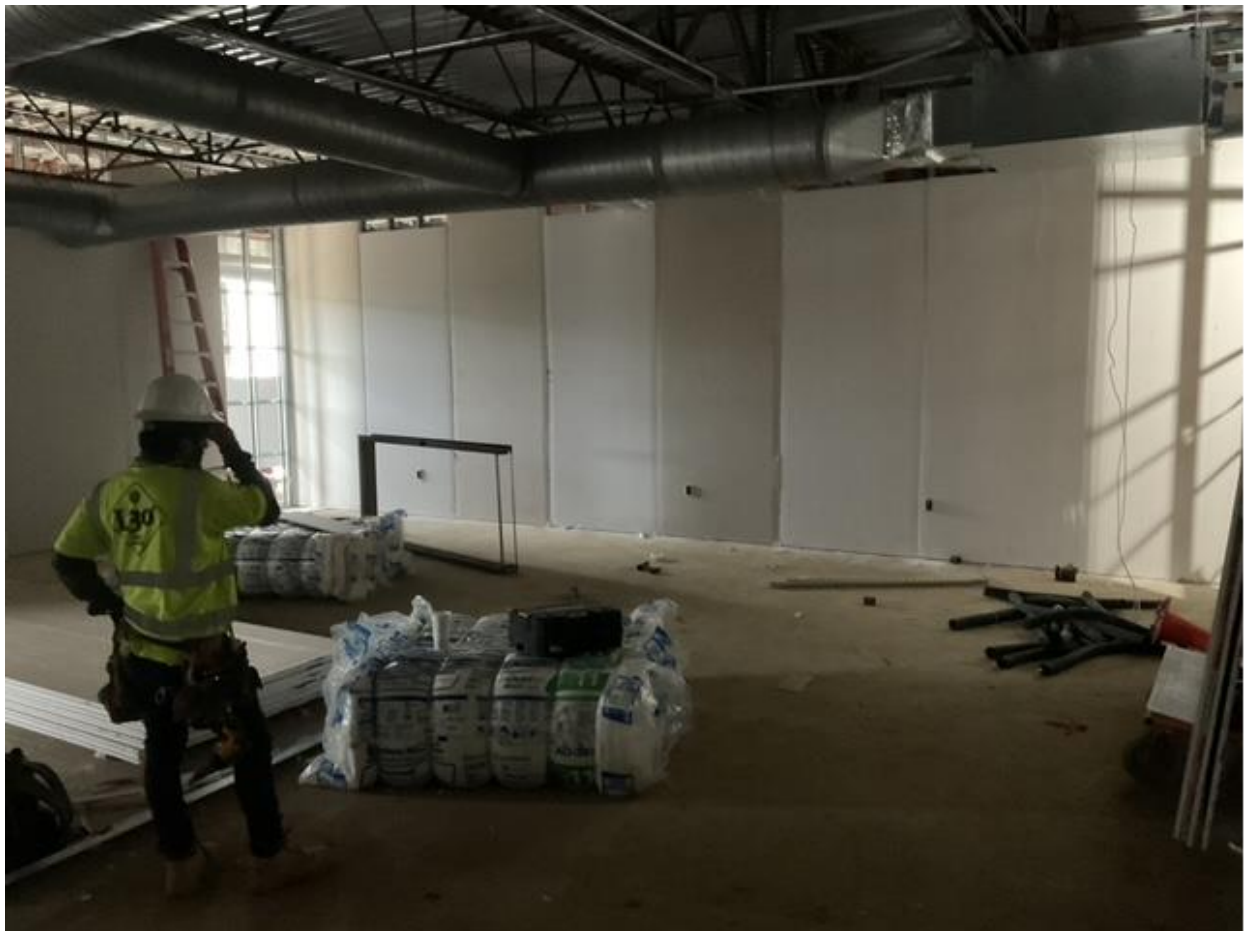
 JOBSITE PHOTOS



Concrete Prep and Pour at Handlers Workstation



CMU Wall at Sallyport

















Hanging Drywall on Level 3



Walks Pads at Roof

 WEATHER

Weather delays this week: 0

17  69° 45°	18  57° 30°	19  60° 41°	20  72° 45°	21  78° 56°	22  62° 52°	23  69° 36°
24  65° 43°	25  63° 54°	26  62° 50°	27  73° 48°	28  67° 39°	29  71° 46°	30  76° 52°

- Total Weather Delays: 16
- We anticipate a delay due to projected rainfall on 4/2/24. Weather will be documented and reported as necessary.

SAFETY REPORT

- Days without an accident: 185
- Days without lost time: 185

MILESTONE TRACKING

- Construction Start: August 21, 2023
- Current Contract Completion Date: Mar 14, 2025