

HIGH PERFORMANCE SEALANTS & WATERPROOFING

Presented by Tremco



SANDY SPRINGS™
GEORGIA



September 24, 2024

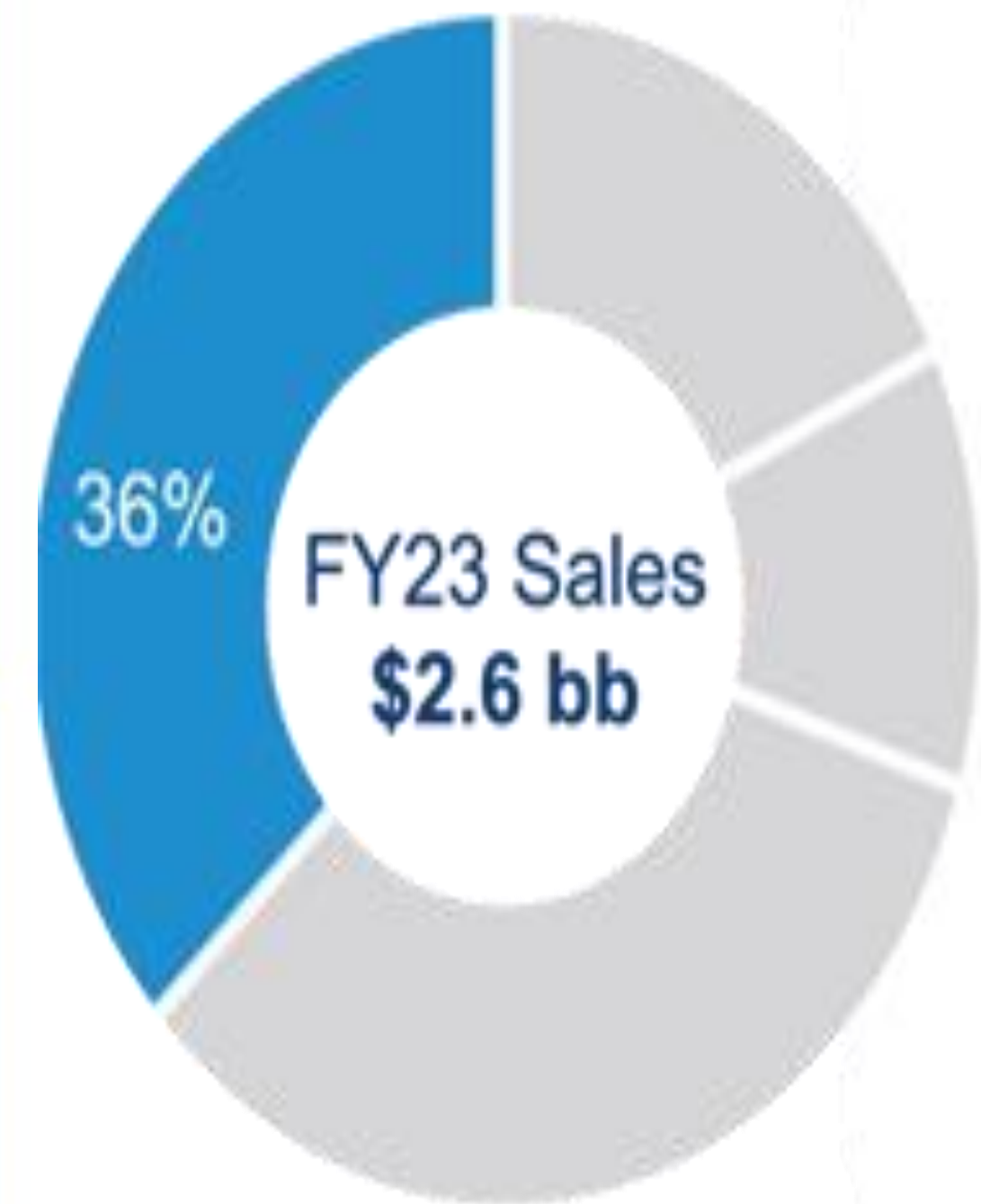


Product Presentation and Overview for City of Sandy Springs



Construction Products Group

September 24, 2024



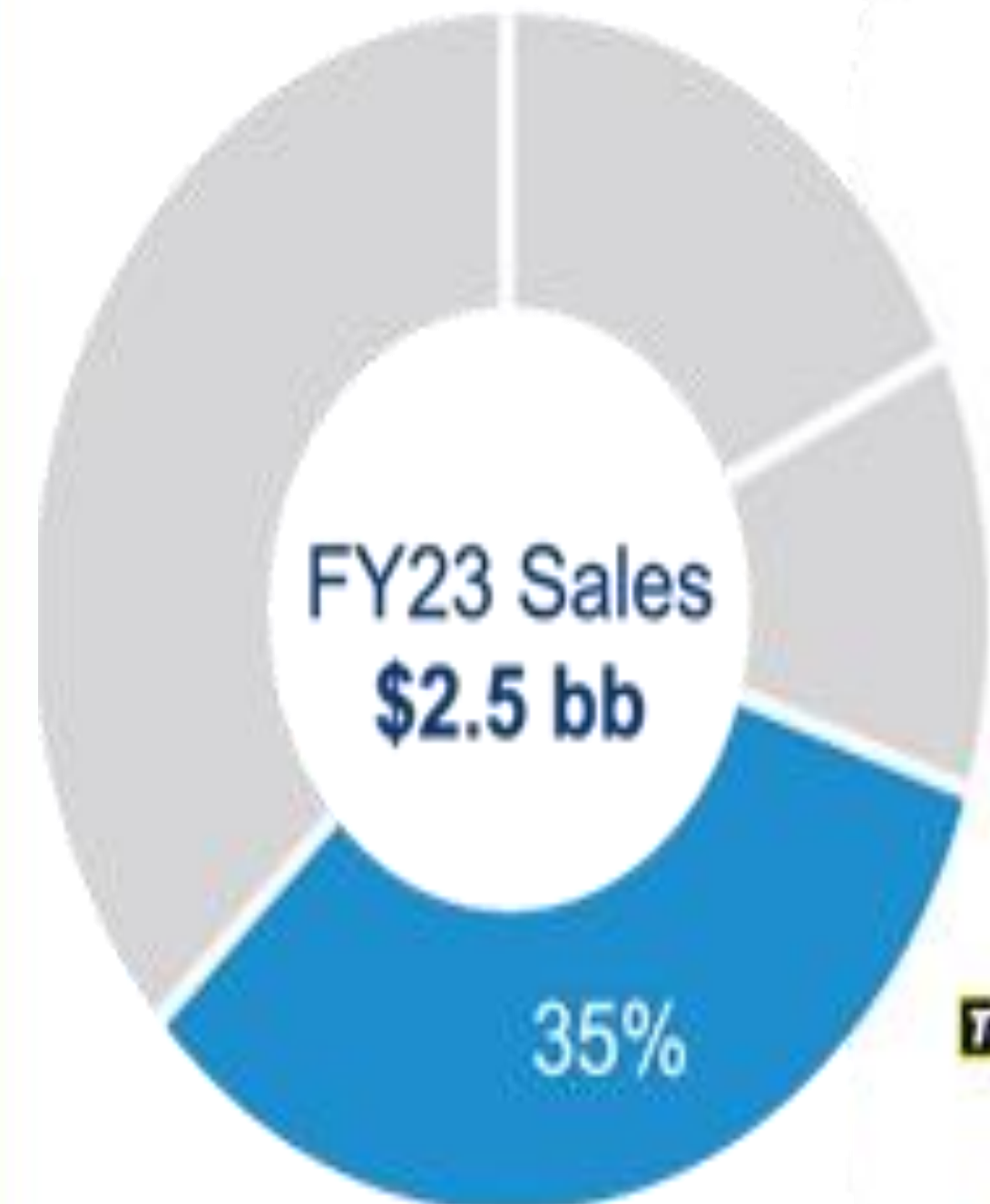
CONSTRUCTION PRODUCTS GROUP

Create and drive unique systems for the construction, restoration and maintenance of the building envelope and infrastructure



CONSUMER GROUP

Create, innovate and lead consumer product category platforms



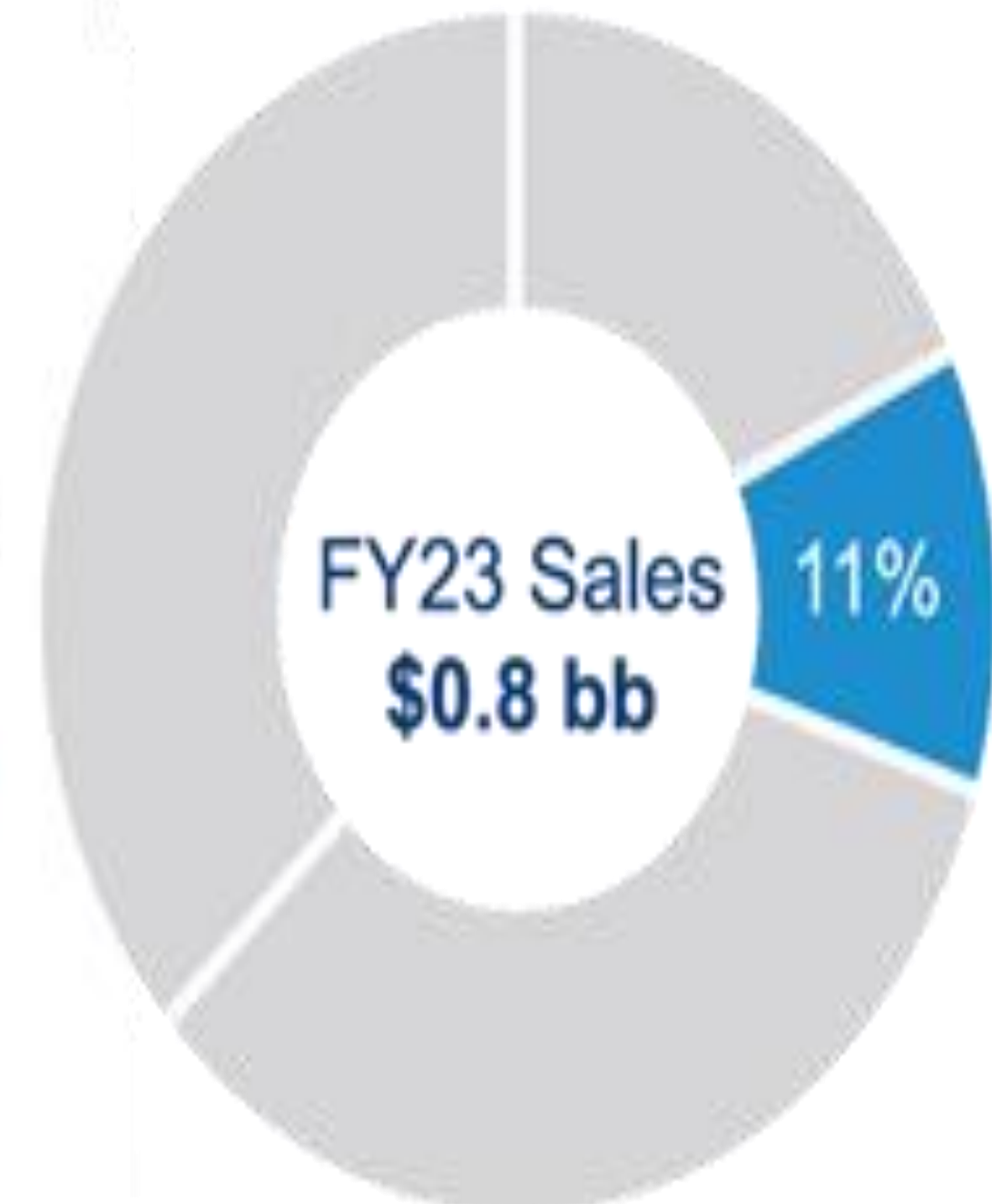
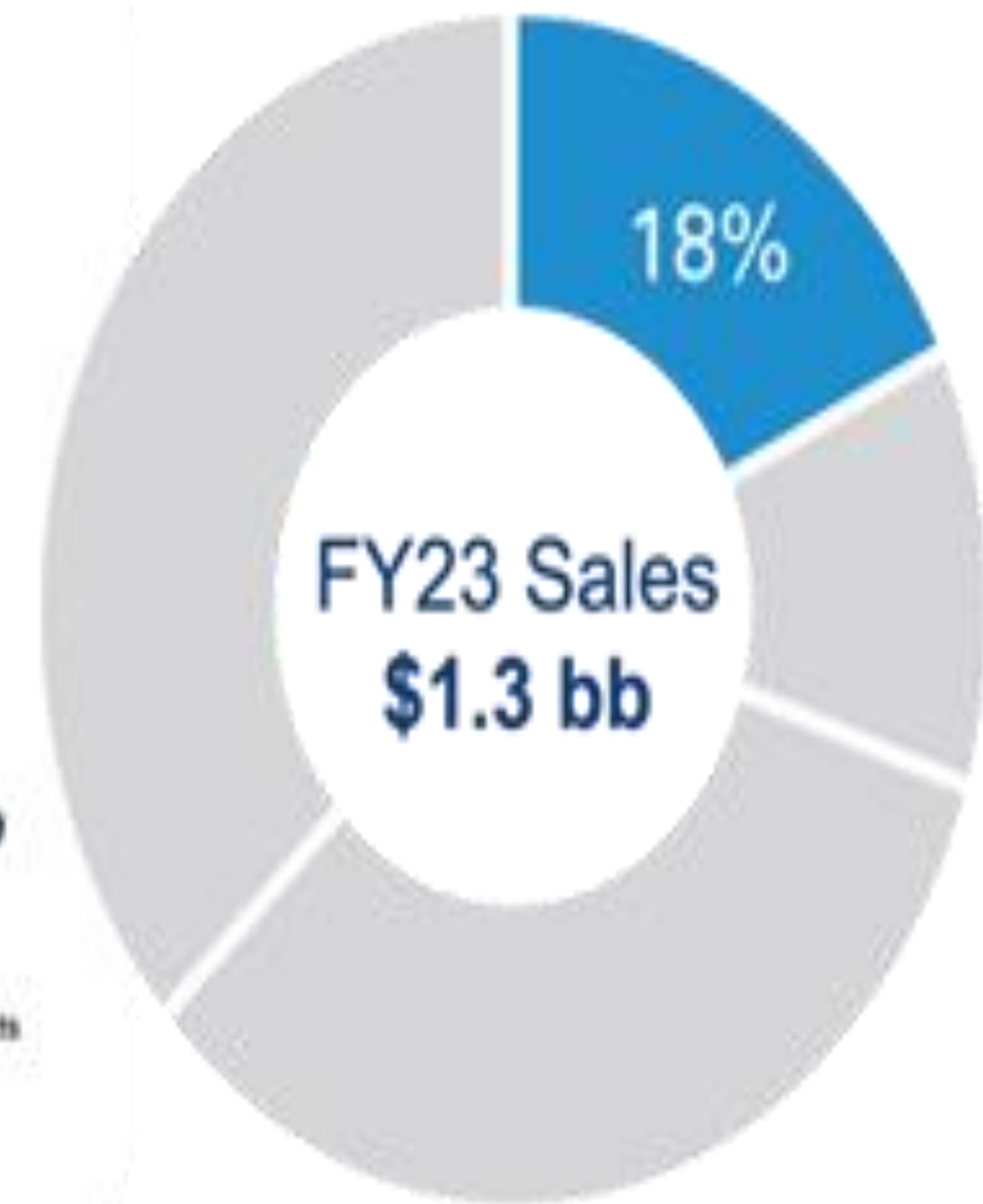
PERFORMANCE COATINGS GROUP

Protecting, enhancing and extending the useful life of concrete, steel and structural alternatives



SPECIALTY PRODUCTS GROUP

Best home for entrepreneurial companies and incubator of new market platforms





Construction Products Group



Who We Are....

- **Joel Garland - Technical Sales (AL, GA, MS)**
 - Cell: (404) 821-7545 Email: JGarland@tremcoinc.com
- **Paul Montray - Technical Sales Dryvit (AL, GA, MS, TN)**
 - Cell: (615) 961-8007 Email: PMontray@tremcoinc.com
- **Christian Wood - Technical Sales Roofing (Georgia)**
 - Cell: (678) 793-5031 Email: CWood@tremcoinc.com
- **Samantha Toole - Architectural Specialist (Georgia)**
 - Cell: (678) 770-2515 Email: SToole@tremcoinc.com

Agenda

- **Sealants and Transitions**
- **New Innovations in Air-Barriers and Flashings**
- **New Innovations in Waterproofing**
- **New Innovations in Commercial Roofing**
- **New Innovations in EIFS and Panelization Construction**
- **Introduction of Prebuck and other specialty products**
- **Power of One Warranty Program**

How does Tremco bring value to your project?

- **Prior work with the AEC community**
- **Submittal Packages.....including Sample Warranties for each product**
- **Review Shop Drawings/Issue Custom Design Details if needed**
- **Product Installation/Application Training (Off-Site or On-Site)**
- **Mock-Up Involvement.....including Product "Samples"**
- **Pre-Installation/Application Meetings**
- **On-Site Visits including Application Inspections**
- **Warranty Assist and Follow-Up**
 - **Tremco has fully staffed Warranty Department**

A “Six-Sided” Building Solution.....

Tremco Construction Products Group unites the industry's premier building and maintenance solutions into one enclosure system that allows you to design, build, restore, and maintain buildings faster, safer, and more efficiently.

Sealants

- Single Component Urethane

***Dymonic 100, Vulkem 116, Dymonic FC (Hybrid), Vulkem 45SSL**

- Multi Component Urethane

***Vulkem 445SSL, Dymeric 240FC**

- Silicones

***Spectrem 1, Spectrem 2, Spectrem 3, Spectrem 4 (2 part)**

***Spectrem 800/900SL, Proglaze, Tremsil 200, Tremsil 600**

- Synthetic Butyl

***TremPro JS-773**

- Acrylic

***Tremflex 834**

- Specialty

***Acoustical/Curtain Wall, Smoke and Sound**

Innovations in Air-Barriers and Flashing

- **Sheet Membrane Non-Permeable**
 - ***ExoAir 110AT**
- **Sheet Membrane Permeable**
 - ***ExoAir 210AT**
- **Fluid Applied Non-Permeable**
 - ***ExoAir 120, ExoAir 130**
- **Fluid Applied Permeable**
 - ***ExoAir 220, ExoAir 230, ExoAir 240 (STPU)**
 - ***SE430 (Tremco/USG Partnership)**

ExoAir 210 AT



ExoAir 210 AT



Securock ExoAir 430

- *Utilizes Tremco ExoAir 230 (Permeable)**
- *Factory applied at consistent 20 mils**
- *Formulated for 12 months UV exposure**
- *Can be used in permanent “rainscreen” applications**
- *15-year material warranty**
- * Tested on multiple NFPA 285 approved wall assemblies**

Securock ExoAir 430



Securock ExoAir 430



Securock ExoAir 430



Securock ExoAir 430



Waterproofing Membranes

- **Cold Applied Liquid**
 - ***TREMproof 250GC, TREMproof 260, TREMproof 201/60**
 - ***TREMproof DWS**
- **Sheet Membrane**
 - ***TREMproof 560A, TREMproof Amphibia, Paraseal (Bentonite)**
- **Hot Applied (HRA)**
 - ***TREMproof 6100**
- **Crystalline**
 - ***Permaquik 200**
- **Specialty**
 - ***PUMA**

PUMA

- *Extremely versatile product**
- *Can be used as primary waterproofing or traffic coating**
- *Utilizes PUMA technology, eliminates reinforcing fabric**
- *Highly chemical resistant**
- *Highly abrasion resistant**
- *Rapid setting (resin + catalyst)**
- *Can be submerged and used with water features**
- * Up to 20-year material warranty based on system**

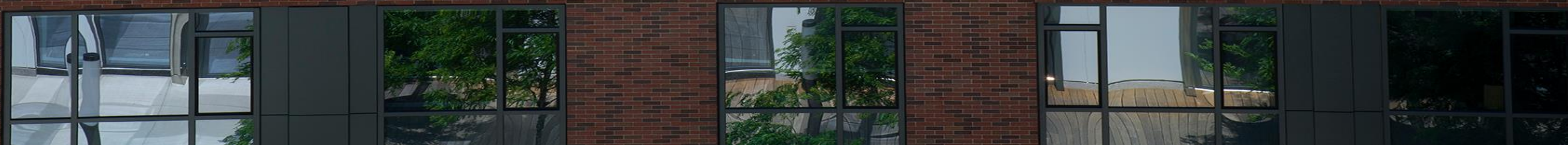
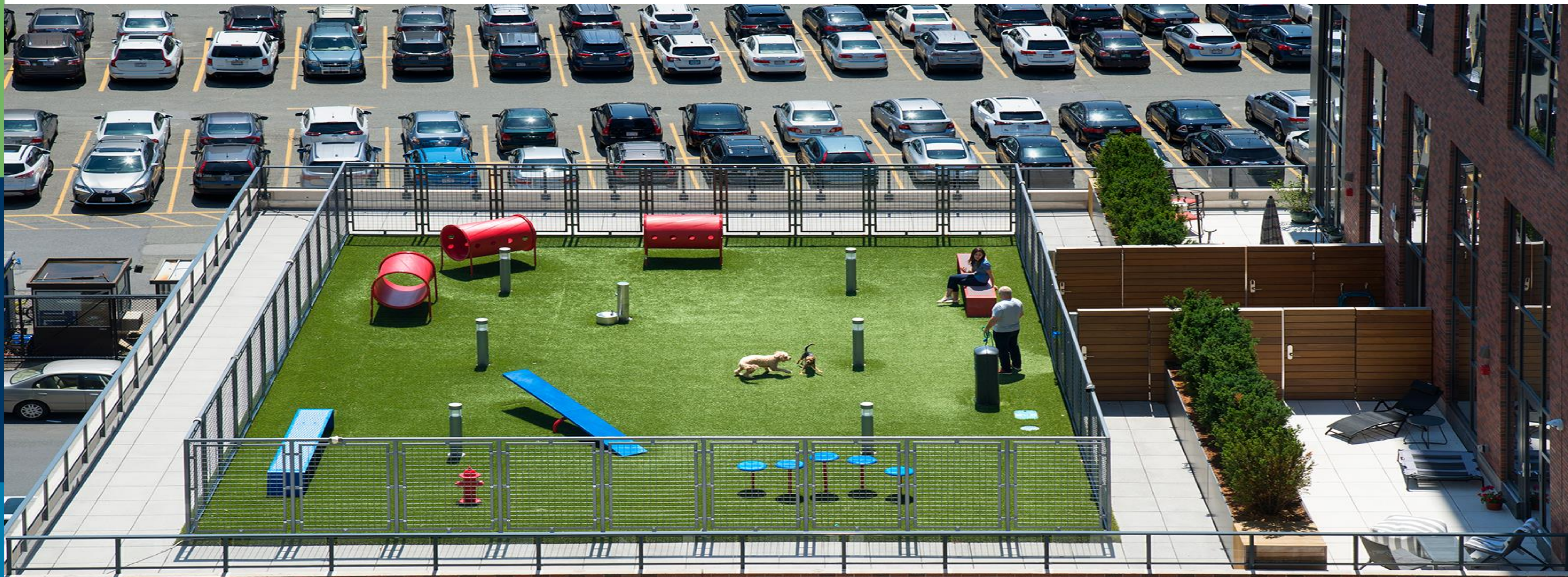
PUMA - Below Grade on Steel



A photograph of a modern glass-walled building with a large, abstract copper sculpture in the foreground. The sculpture consists of several thick, curved bands that intersect to form a large, stylized 'X' or 'W' shape. In the lower-left foreground, a dark grey stone wall features the address '650 WEST PEACHTREE' in white, sans-serif capital letters. The building's glass facade reflects the sky and surrounding environment. A paved walkway leads towards the building's entrance, which has glass doors. Some people and orange traffic cones are visible near the entrance. The scene is set during the day with clear lighting.

650 WEST PEACHTREE

PUMA - Dog Walk (Pee Pad)



PUMA - Detailing for HRA System



PUMA - Fountain Water Feature



PUMA - Pedestrian Traffic Coating



PUMA - Pedestrian Traffic Coating



PUMA - Vehicular Traffic Coating



PUMA - Vehicular Traffic Coating



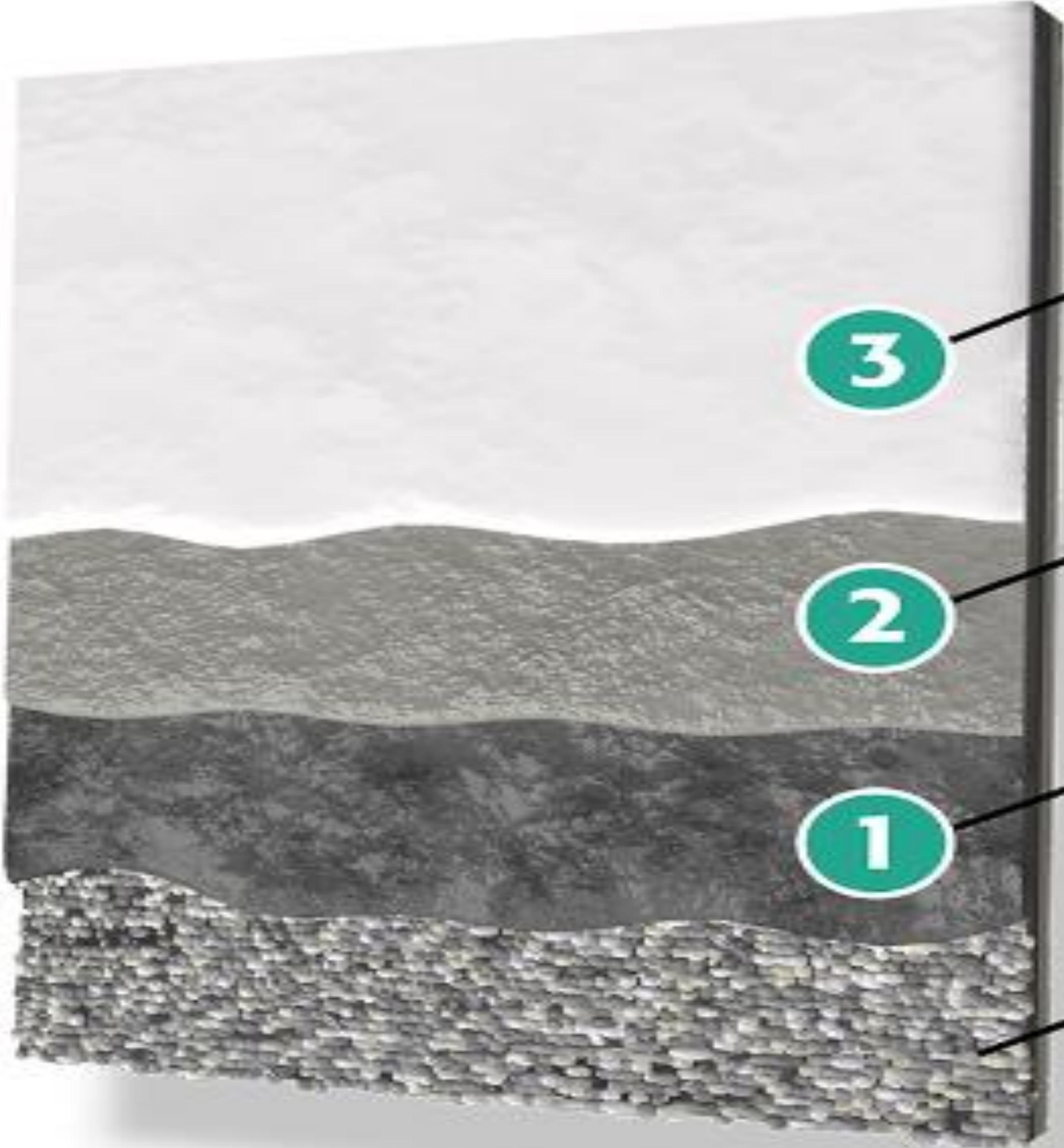
Innovations in Roofing Technology

- **AlphaGrade**
- **Alpha Guard**
- **Pure Air**

AlphaGrade

- Tremco Roofing and Building Maintenance is proud to introduce the [AlphaGrade Restoration System](#) for gravel-surfaced built-up roofs (BUR). This unique, bio-based, liquid-applied system restores aging yet still functional built-up roofs with multiple layers of waterproofing protection — **eliminating the need for roof replacement**, while saving building owners tens or even hundreds of thousands of dollars.

AlphaGrade



**ALPHAGRADE
TOP COAT**

**ALPHAGRADE
BASE COAT**

**ALPHAGRADE
LEVELING COAT**

EXISTING GRAVEL

AlphaGrade



AlphaGuard

- Tremco's AlphaGuard systems have the additional benefit of a high bio content, for projects requiring more sustainable solutions. Both AlphaGuard™ PUMA (Modified Polyurethane/Methyl Methacrylate) and the AlphaGuard™ FC LO system features a two-component, modified polyurethane methacrylate waterproofing resin that can be used for new construction or to restore a variety of aging but still functional roof types, as well as for roof replacement. AlphaGuard FC is fast-curing, low odor technology perfect for sensitive environments.

AlphaGuard



Services That Improve Building Health & Occupant Well-Being



Pure Air Control Services

Healthy Buildings, Healthy People®

Indoor Air Quality & HVAC System Testing & Restoration

New Trends in Construction

- **Dryvit**
- **NewBrick**
- **Panelization**



OUTSULATION[®] SYSTEMS

HOW IT WORKS

Outsulation systems typically consist of the following components, as determined by code and performance requirements.

DRYVIT/TREMCO APPROVED WATER-RESISTIVE BARRIER:

Seamlessly protects sheathing or substrate from incidental moisture and eliminates air infiltration

CONTINUOUS INSULATION:

Absorbs expected building movement and enhances energy efficiency

BASE COAT AND REINFORCING MESH:

Combine to provide the primary weather barrier and impact resistance

DRYVIT/TREMCO APPROVED FLASHING SYSTEM:

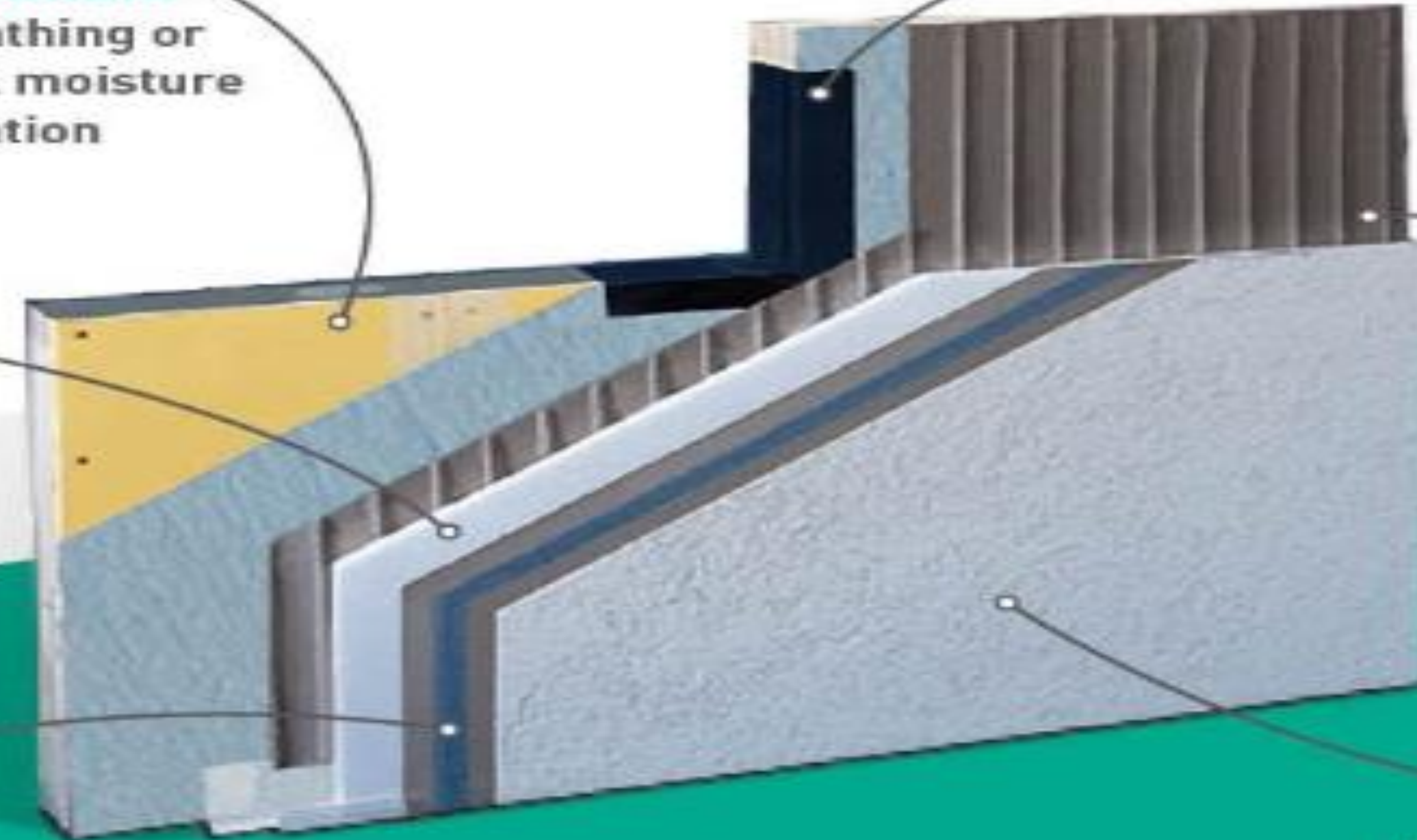
Seamlessly protects openings in the building envelope from moisture

ADHESIVE / DRAINAGE MEDIUM:

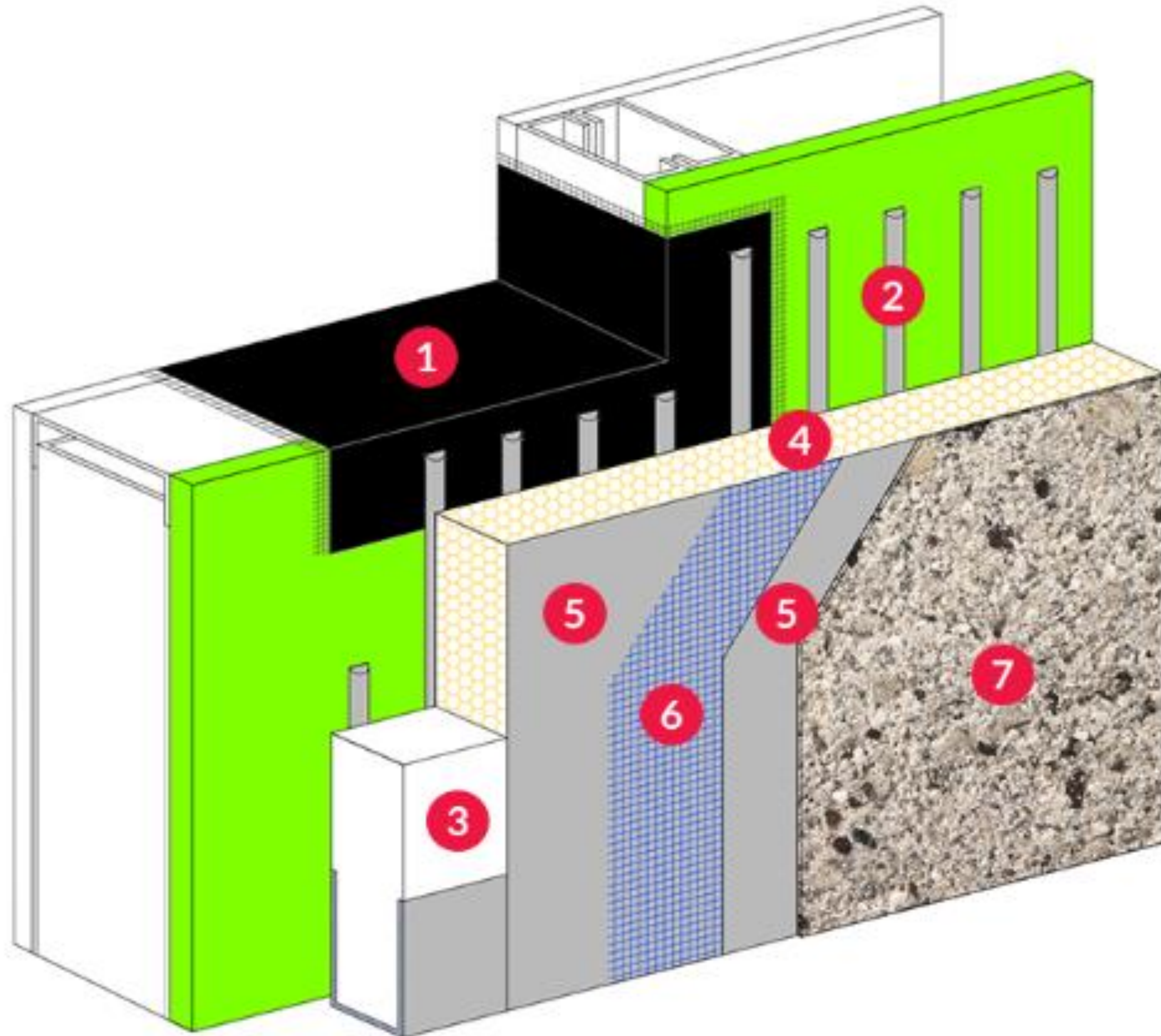
Vertical notches allow drainage of incidental moisture

FINISH COAT:

Blend of 100 percent acrylic copolymers, natural aggregates and UV resistant pigments

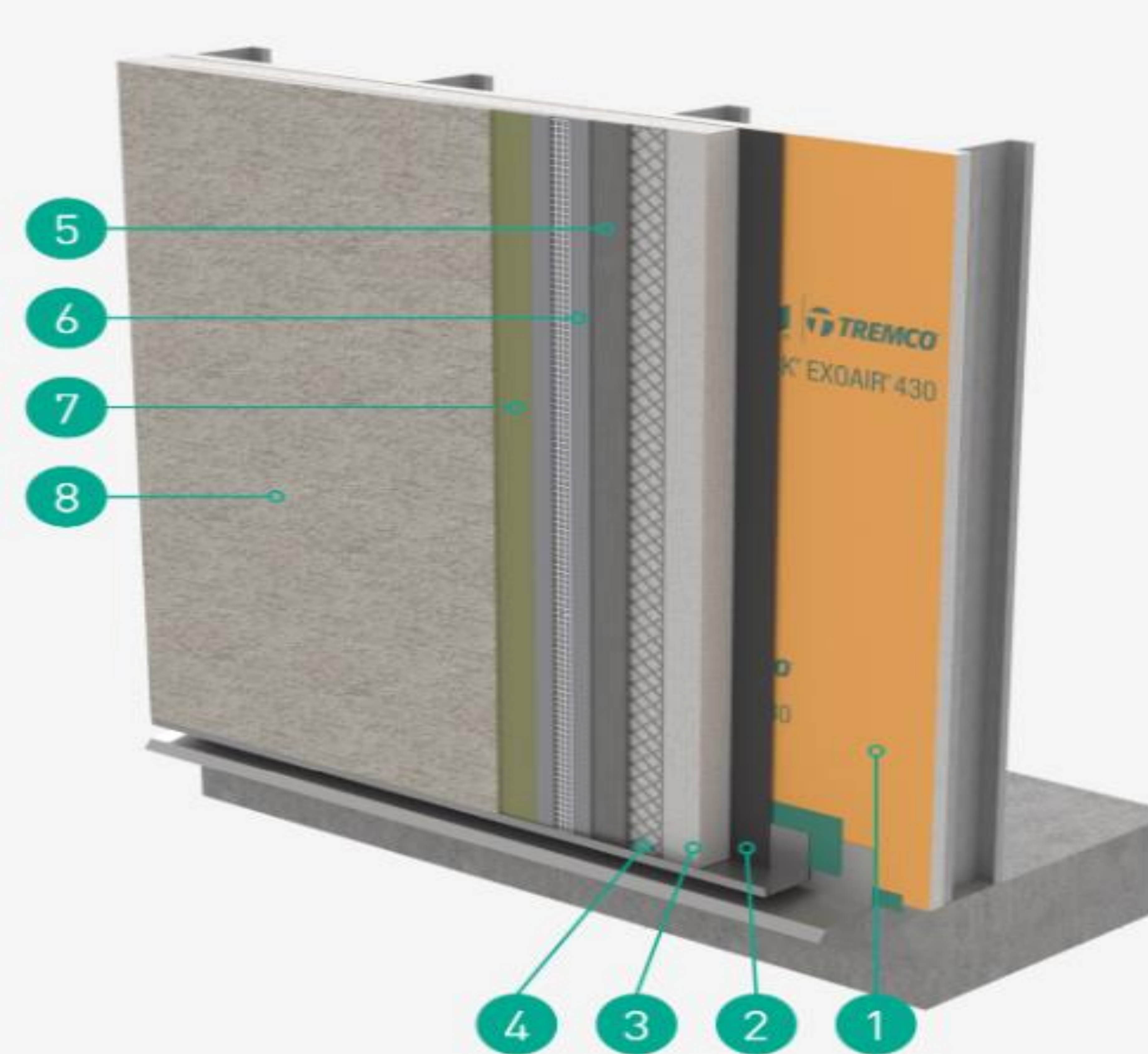


Dryvit – Outsulation



- 1 AquaFlash® Flashing System
- 2 Adhesive
- 3 Pre-Based Starter Board
- 4 EPS Continuous Insulation
- 5 Base Coat
- 6 Reinforcing Mesh
- 7 Finish

Dryvit StucCoat – One Coat System



- 1 Dryvit/Tremco Air/Water-Resistive Barrier over Approved Sheathing Substrate
- 2 Paper Backing
- 3 Foam Insulation (Optional)
- 4 Metal Plaster Base (As Specified)
- 5 StucCoat One-Coat Sanded Base Coat
- 6 Crack Isolation Membrane
- 7 Dryvit Mesh (As Specified)
- 8 Acrylic Textured Finish

NewBrick

The charm and elegance of traditional brick!



NewBrick



NewBrick



NewBrick

LIGHTWEIGHT

- Weighs only 2.45 lbs/sq. ft. before mortar
- Results in higher daily productivity
- Eliminates ties, pans, and shelf angles; significantly reduces load-bearing footings
- Compresses exterior construction schedules

TESTED

- Meets NFPA 285
- Contributes to the insulation requirements as published in the IECC and ASHRAE 90.1 when installed over any Outsulation CI



Panelization



Metalite® 8000

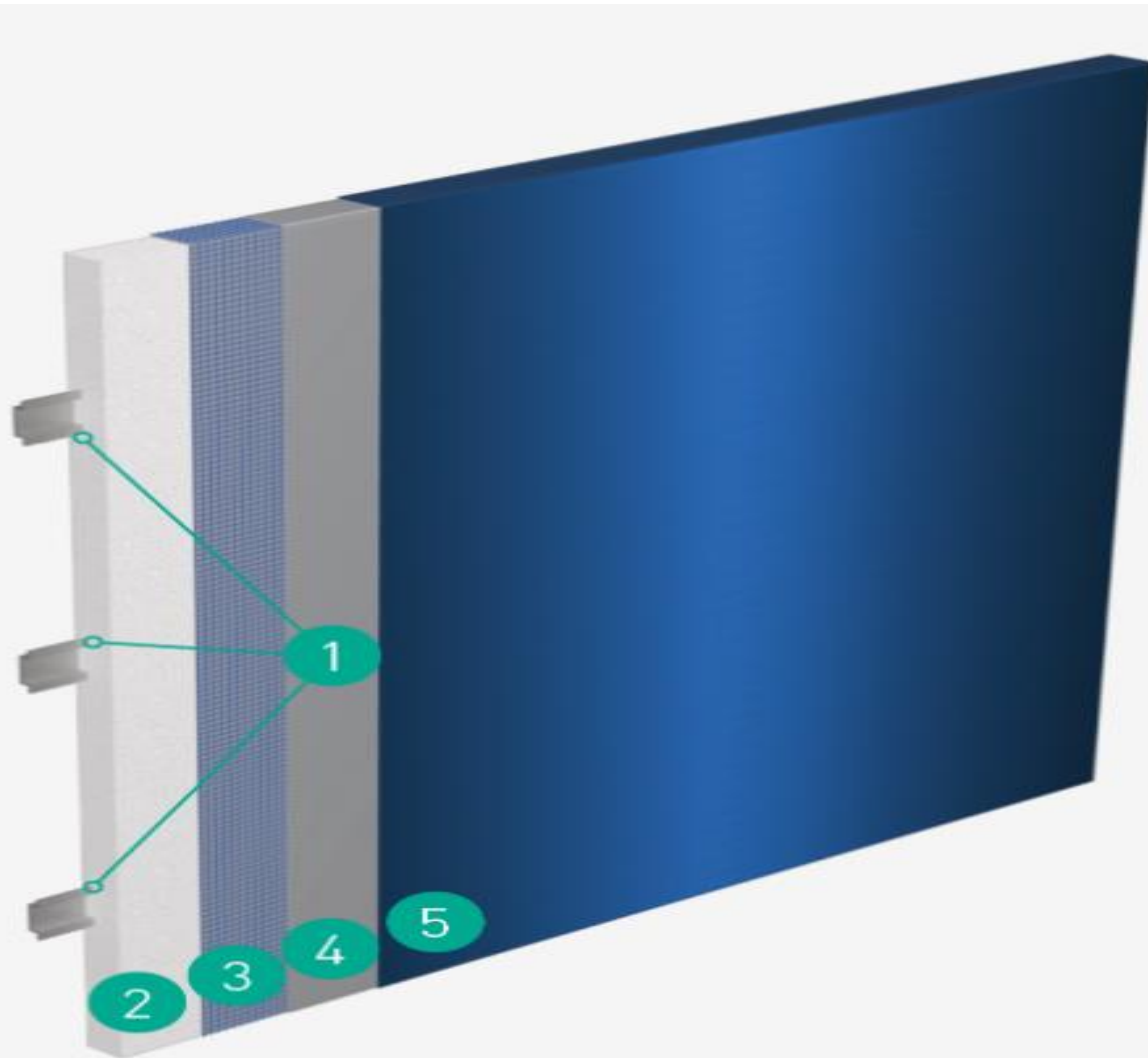
Metalite 8000

Features & Benefits

- Metalite 8000 system offers quick and easy installation
- Market leading warranty up to 30 years for Metal Finish, 10 years for Delamination, 5 years for Fabrication Workmanship
- Lightweight system at 2.29 lbs/ft²
- Achieves a clean exterior due to its rivetless design
- Passes NFPA 285 testing and quality assurance quality control

Fedderlite®

Prefabricated Exterior Wall Insulation and Finish System for Use over Solid Substrates



- 1 Fedderlite Channels
- 2 Expanded Polystyrene (EPS)
- 3 Reinforcing Mesh (Embedded in Base Coat)
- 4 Base Coat
- 5 Finish Coat (Shown: Reflectit™ Smooth)

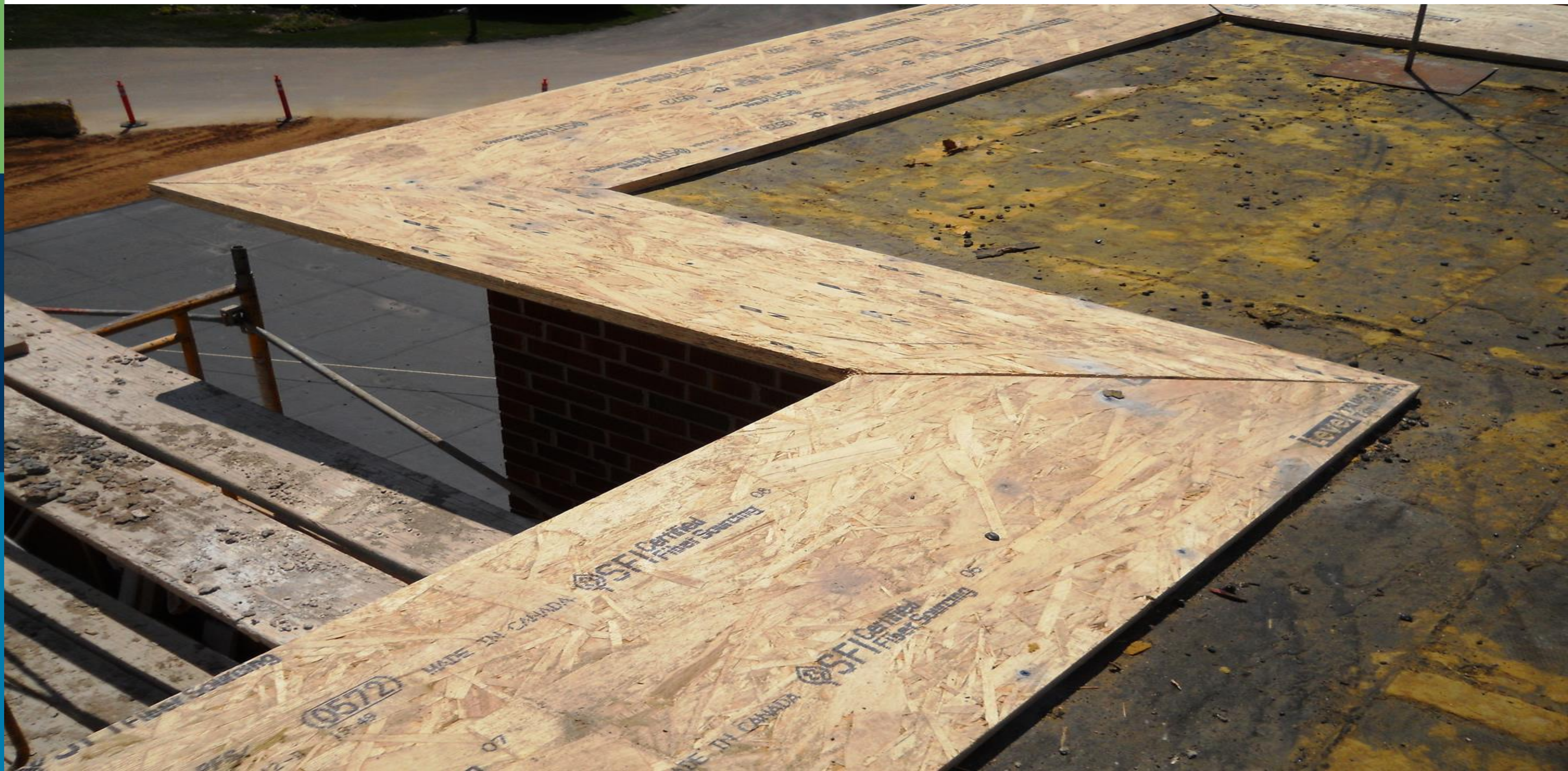
Prebuck Engineered Parapet Cap System

- *Treated LSL Lumber will not warp, twist, bow, curl, etc.**
- *Custom manufactured to any dimension**
- *Waterproof (zinc borate), will not absorb water**
- *Flat or pitched to 3/8" per lineal foot**
- *Non-corrosive to metals, insect/fungus resistive**
- *Countersunk anchor openings**
- *16' Standard Length - Minimal Waste**
- *HUGE manhour/schedule savings**

Prebuck Parapet Cap



Prebuck Parapet Cap



Prebuck Parapet Cap



Willseal Expansion Joints

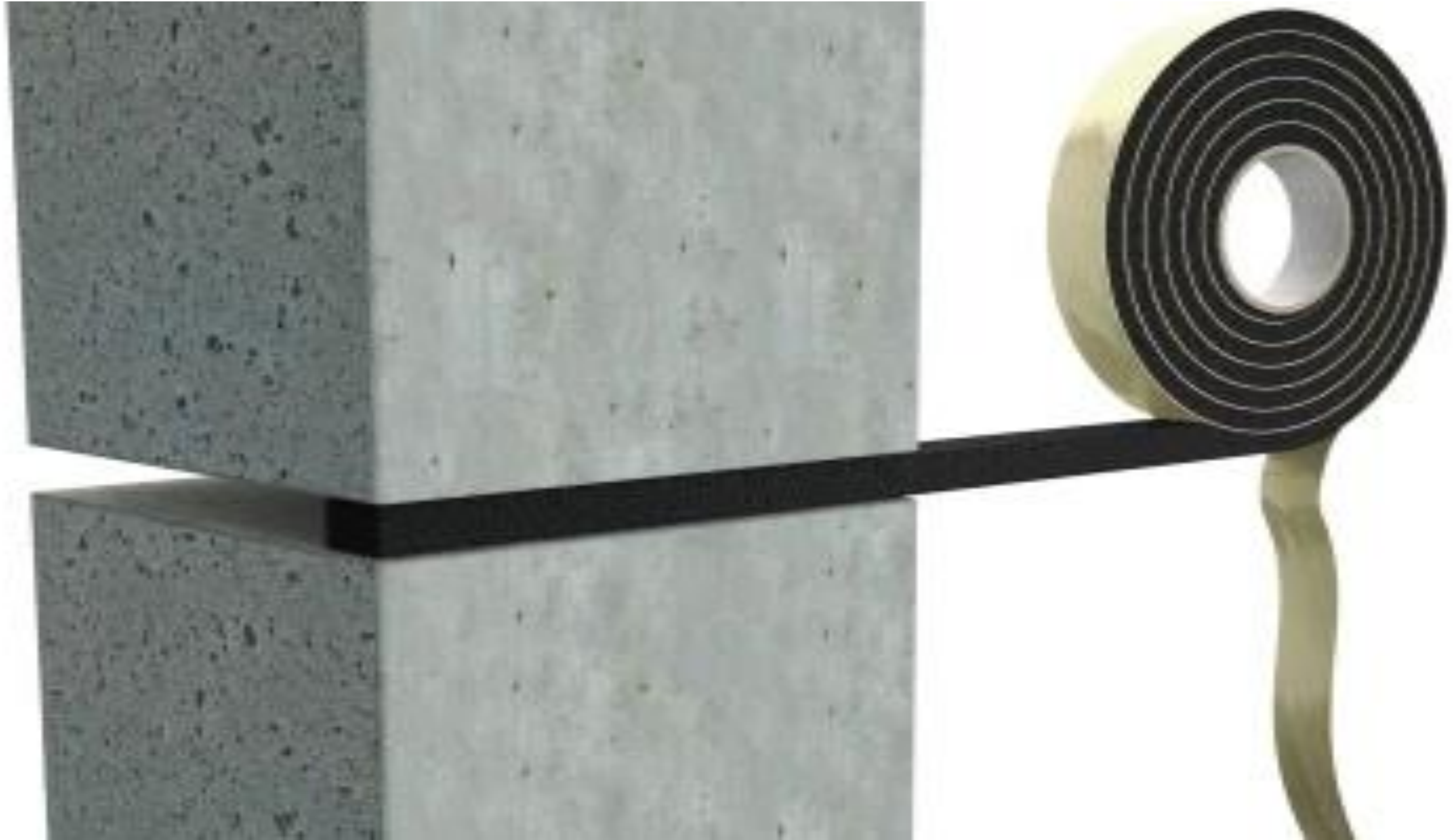


- *Best in class pre-compressed impregnated foam**
- *Traffic-grade horizontal joints**
- *Primary vertical joints**
- *Seismic, large and retrofit joints**
- *Control, longitudinal and traverse joints**
- *Fire-rated joints**
- *Below-grade applications**
- *Interior joints**
- *Large color selection of silicone**

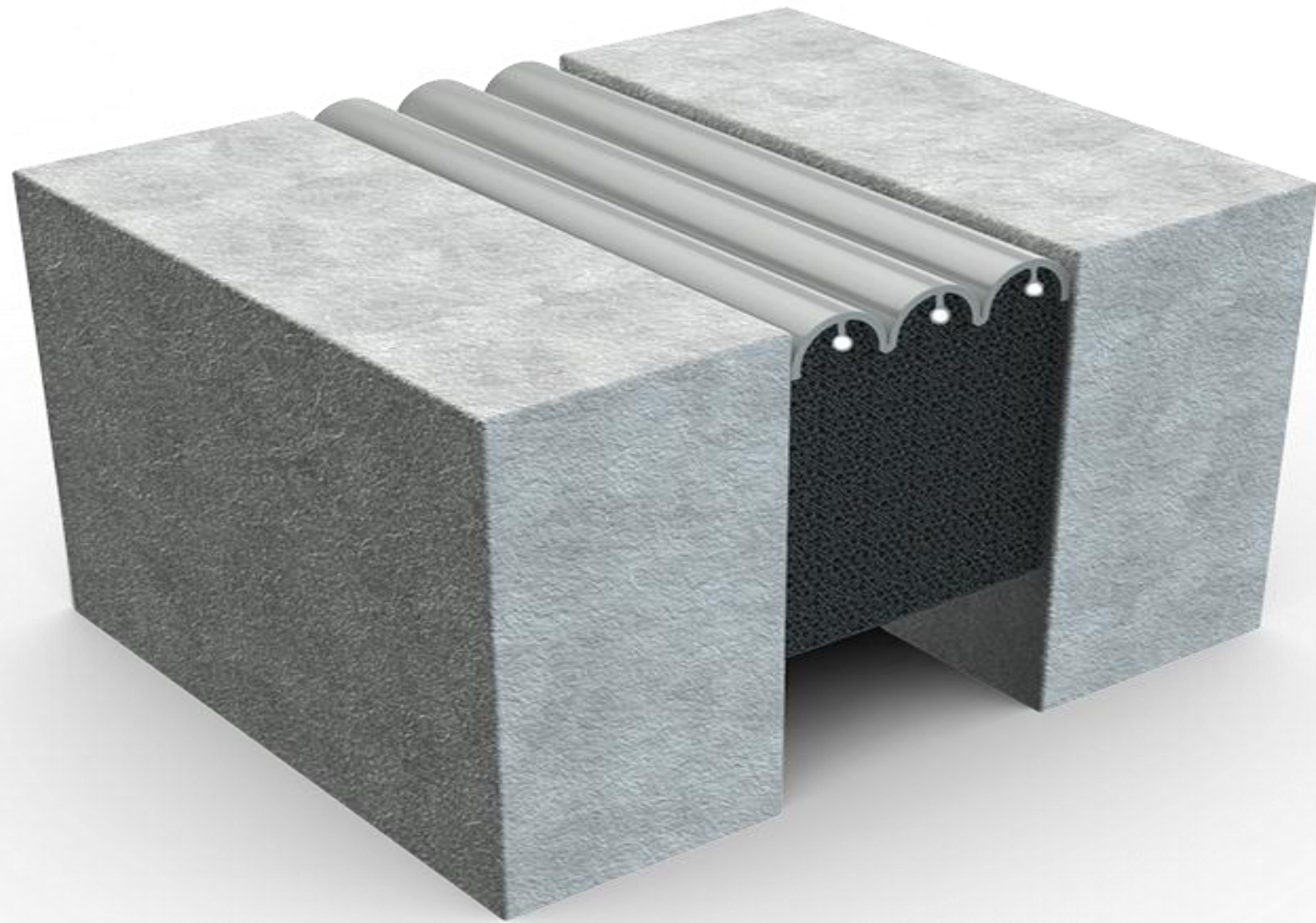
Willseal



Willseal



Willseal vs Top Competitor



Silicone Restoration Overlay Systems

- Uses Spectrem Simple Seal
- Preformed Silicone Extrusion
- Utilizes 3D Printing Technology
- Depending on project size and scope.....
 - Can be a huge reduction in cost based on schedule and manhours
- Up to 20 Year Restoration Warranty

Silicone Restoration Overlay



Silicone Restoration Overlay



Nudura ICF's

- * **Fastest growing product category in construction**
- * **DURALOK Technology (Lego's!)**
- * **DURAFOLD Technology - Folds flat prior to install**
- * **Larger surface area per unit - 96" x 18" = 12SF**
- * **Better Insulated - Exterior/Interior Insulation 2 5/8"**
- * **Core Widths range from 4" - 12"**

Nudura ICF's



Nudura ICF's



Nudura ICF's



Nudura ICF's



Nudura ICF's



POWER ¹ of ONE



Construction Products Group

One Building Envelope. One Warranty.
One Powerful System Delivering Unmatched Protection.

Tremco CPG companies' products are designed and tested to work as one continuous system — and warranted together in a single document.

It's the power of one: One building envelope. One warranty. One powerful system delivering unmatched protection for your structure.

Parking Deck/Stadium Restoration

- **Euclid Repair Products**
 - **Structural Repair Mortars, Epoxy Grouts, Patching Materials**
- **Tremco**
 - **Traffic Coatings, Sealants**
- **Willseal**
 - **Expansion Joints**
- **Dryvit**
 - **Façade Finishes**

POWER *of* **ONE**

One Building Envelope. One Warranty.
One Powerful System Delivering Unmatched Protection.



Construction Products Group

Thank You!

Questions?