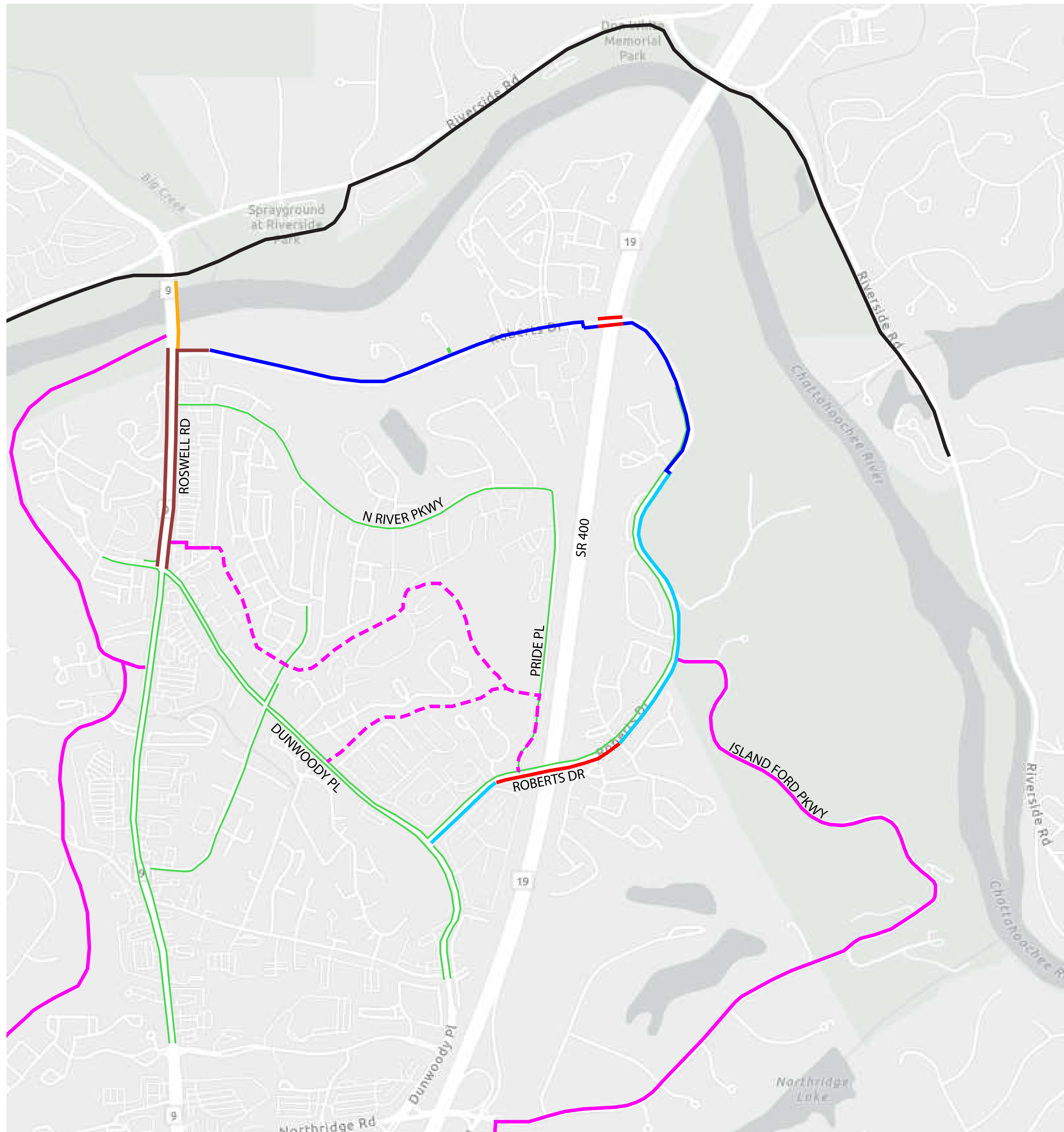


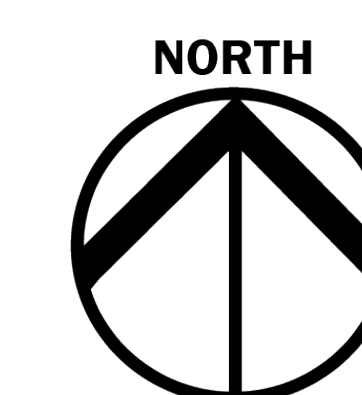
EXISTING AND PROPOSED PEDESTRIAN CONNECTIVITY



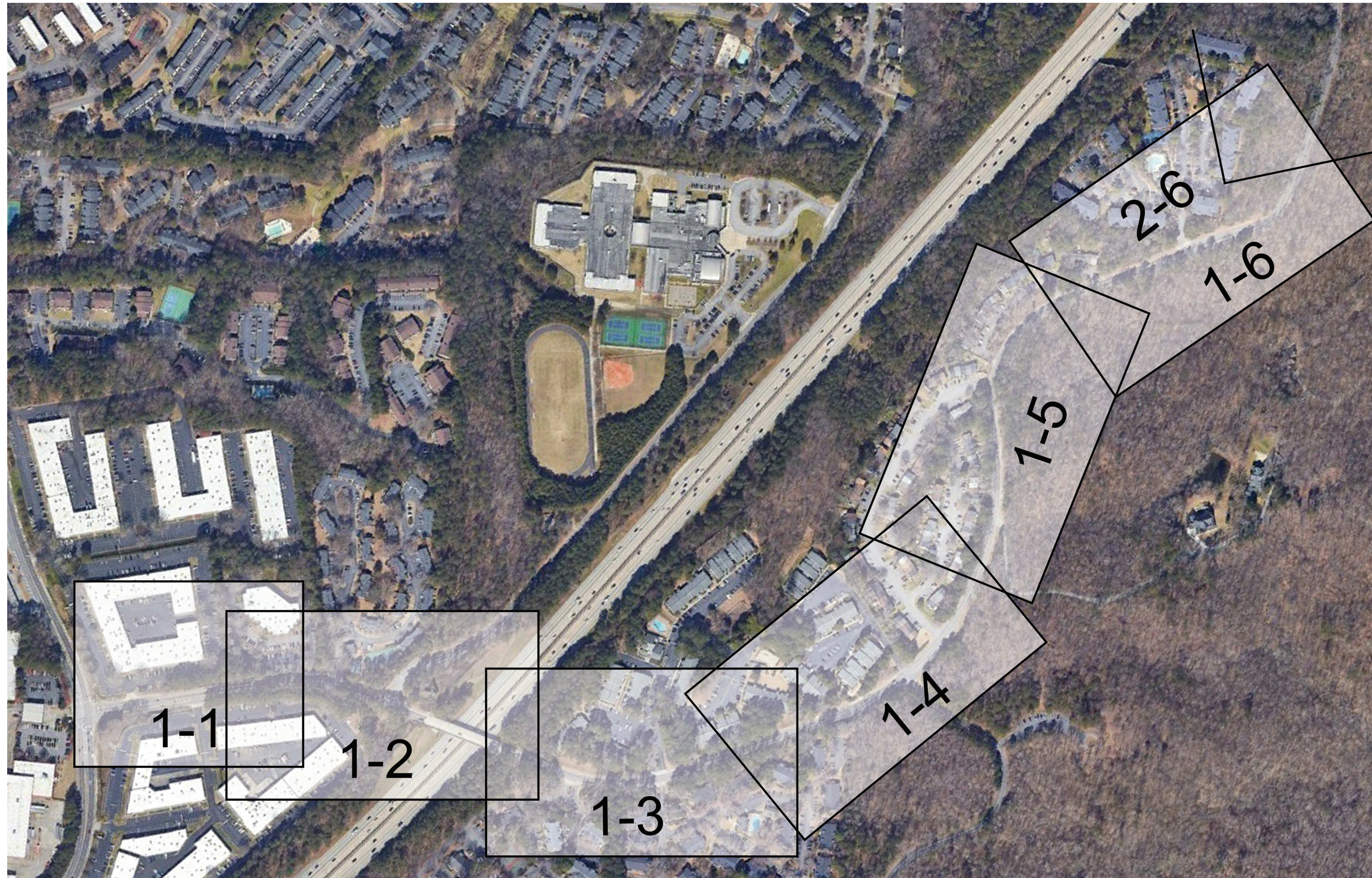
- Existing Sidewalks
- Trails Master Plan
- Trails Master Plan - Planned
- Roswell North End Blvd
- Roswell Ped Bridge Project
- Roberts Drive Side Path - Phase I
- Roberts Drive Side Path - Phase 2
- To Be Completed by GDOT
- Roswell Riverwalk (City of Roswell)

ROBERTS DRIVE SIDE PATH SCOPING STUDY | OPEN HOUSE

City of Sandy Springs, Georgia
October 28th, 2024

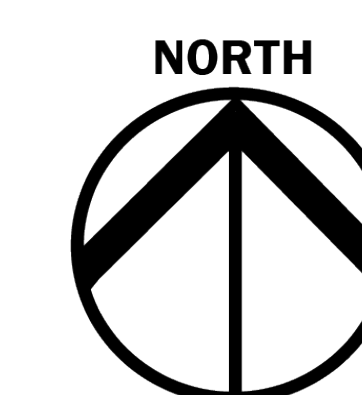


PHASE ONE OVERVIEW

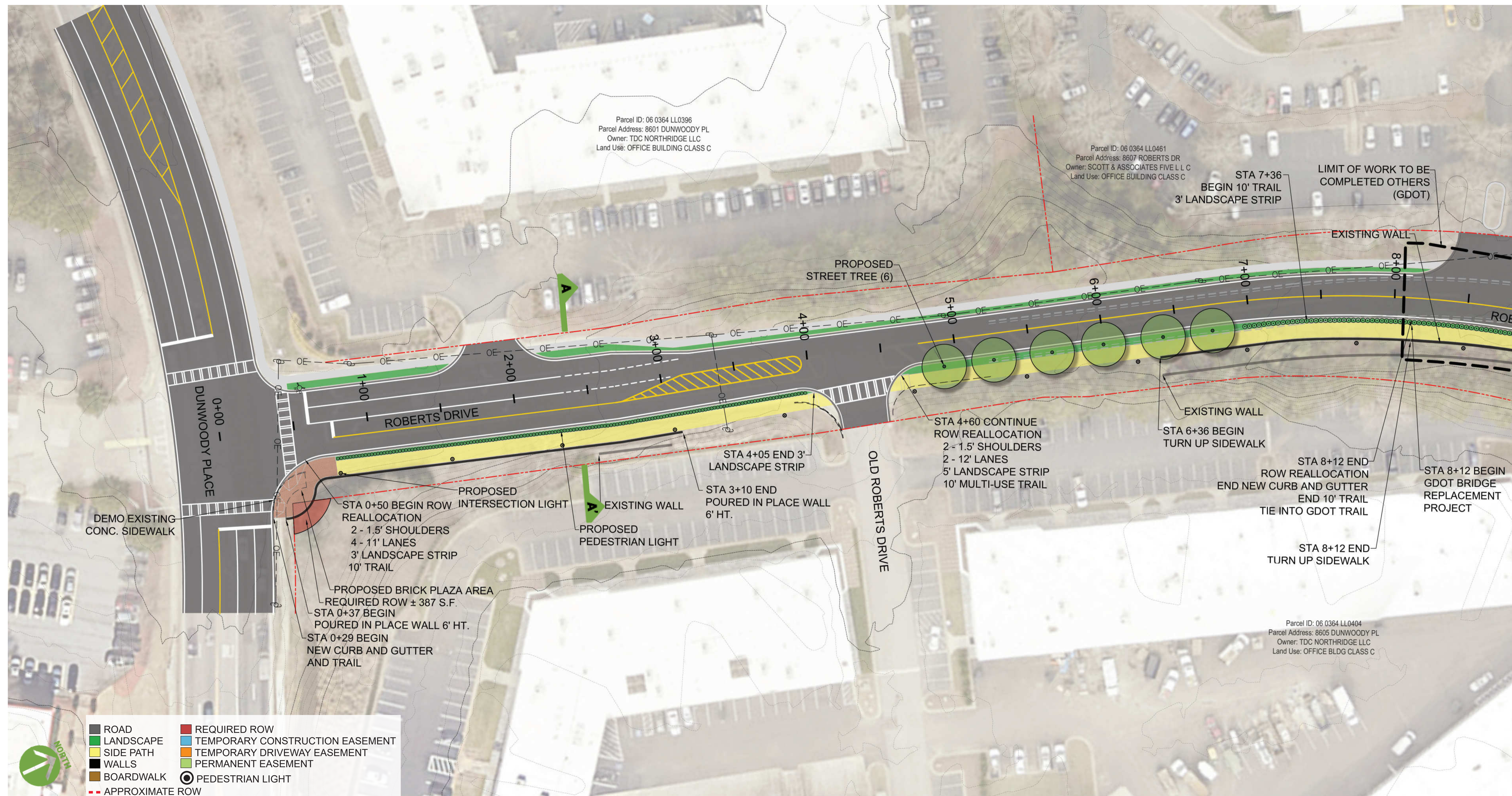


ROBERTS DRIVE SIDE PATH SCOPING STUDY | OPEN HOUSE

City of Sandy Springs, Georgia
October 28th, 2024



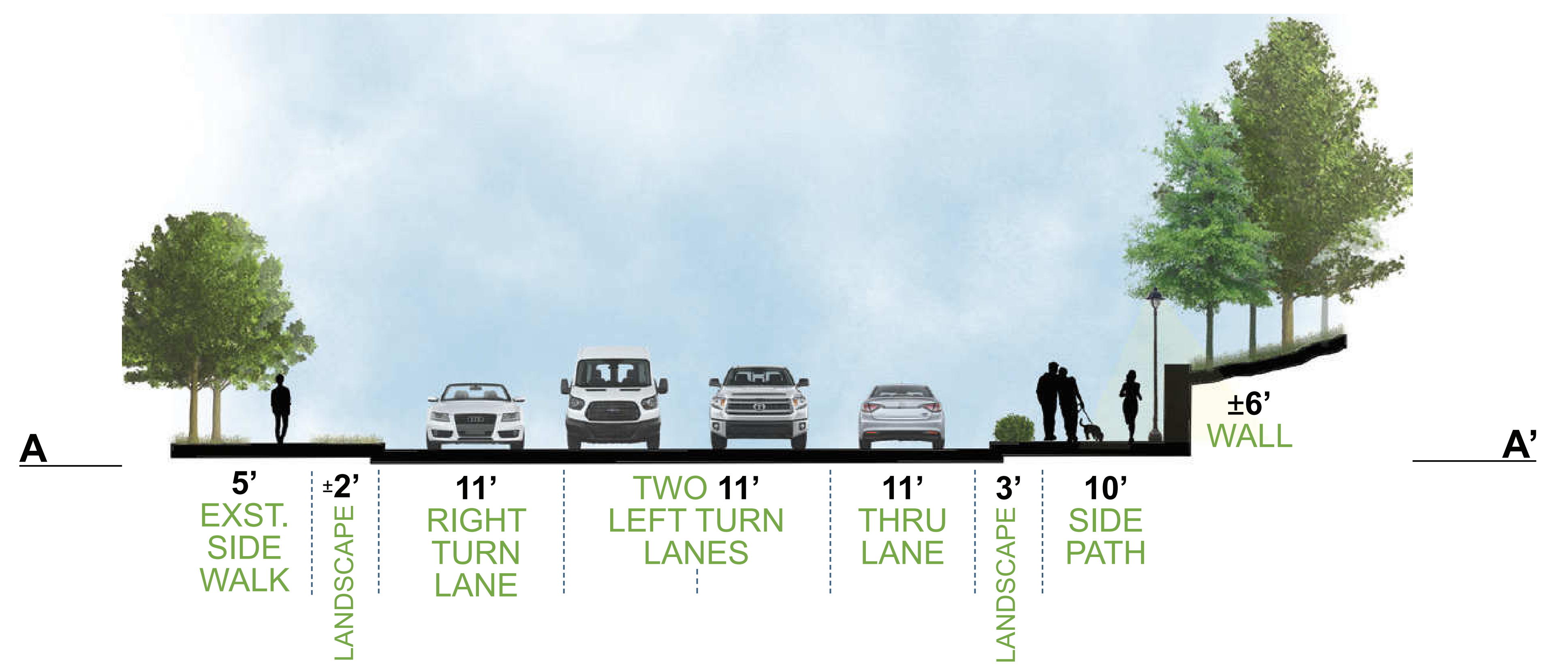
PHASE 1 | SHEET 1-1



NOT TO SCALE



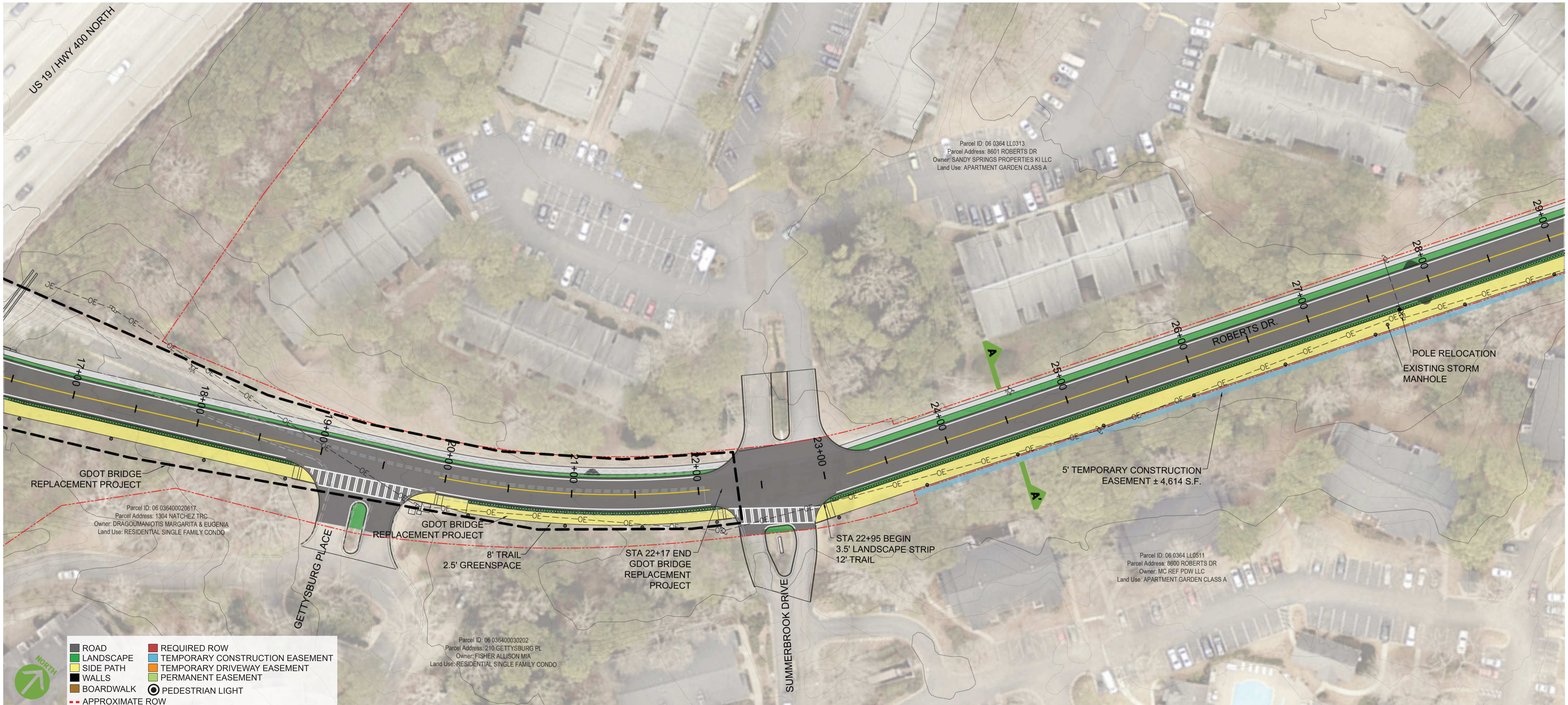
ROBERTS DRIVE AT DUNWOODY PLACE
LOOKING NORTHEAST TOWARDS ROBERTS DRIVE



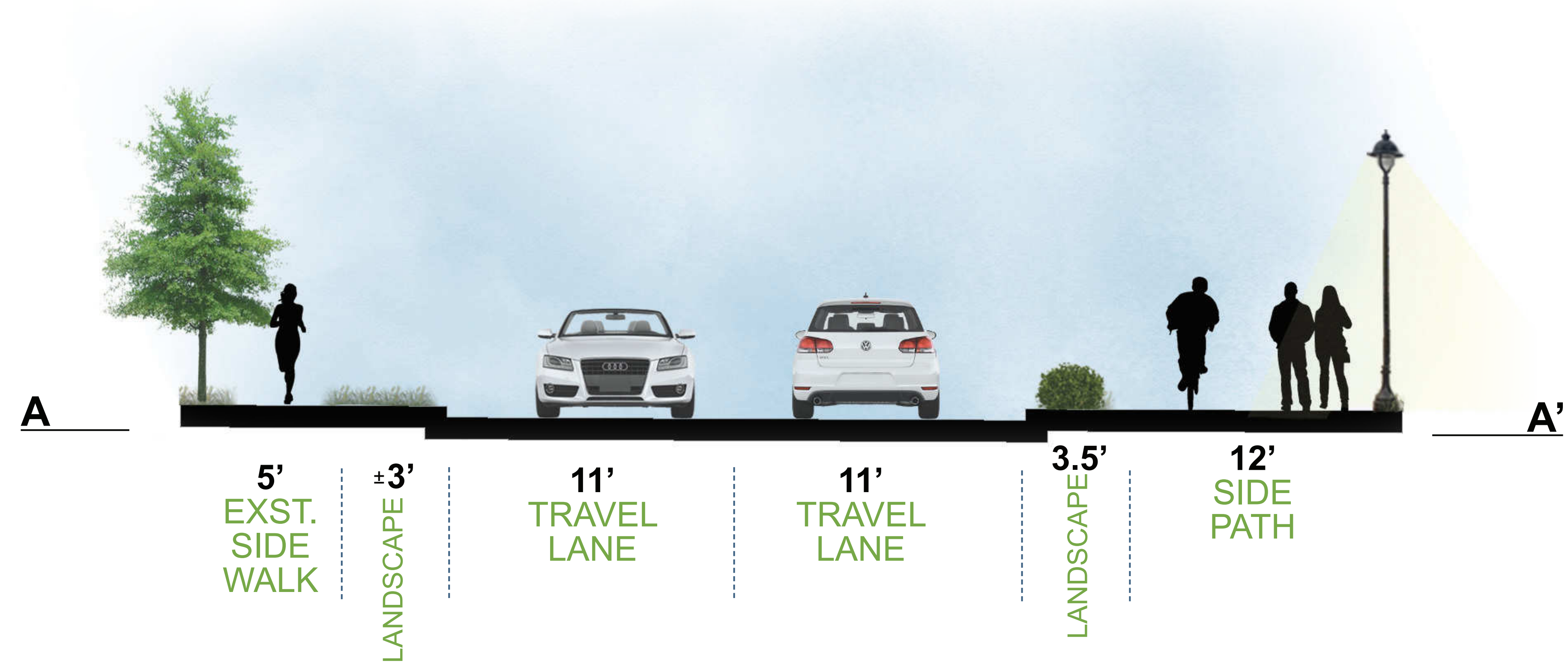
ROBERTS DRIVE SIDE PATH SCOPING STUDY | OPEN HOUSE

City of Sandy Springs, Georgia
October 28th, 2024

PHASE 1 | SHEET 1-3



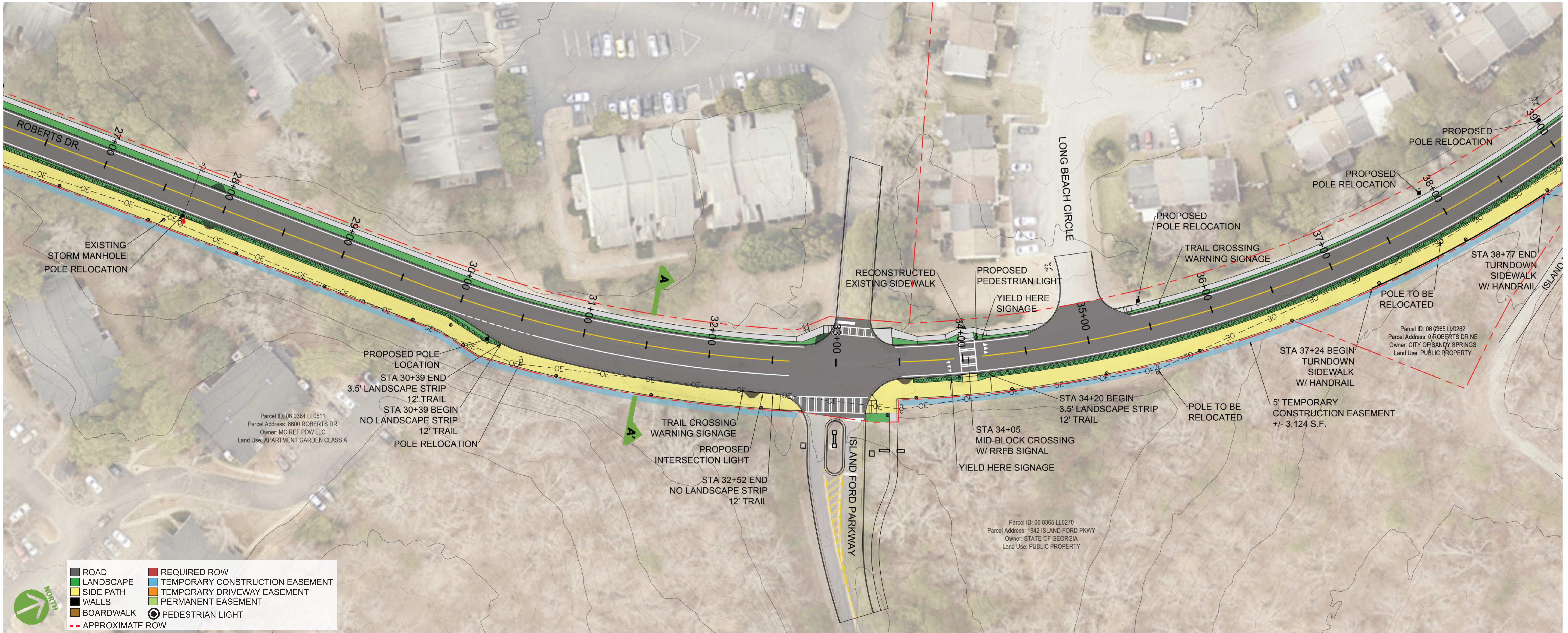
NOT TO SCALE



ROBERTS DRIVE SIDE PATH SCOPING STUDY | OPEN HOUSE

City of Sandy Springs, Georgia
October 28th, 2024

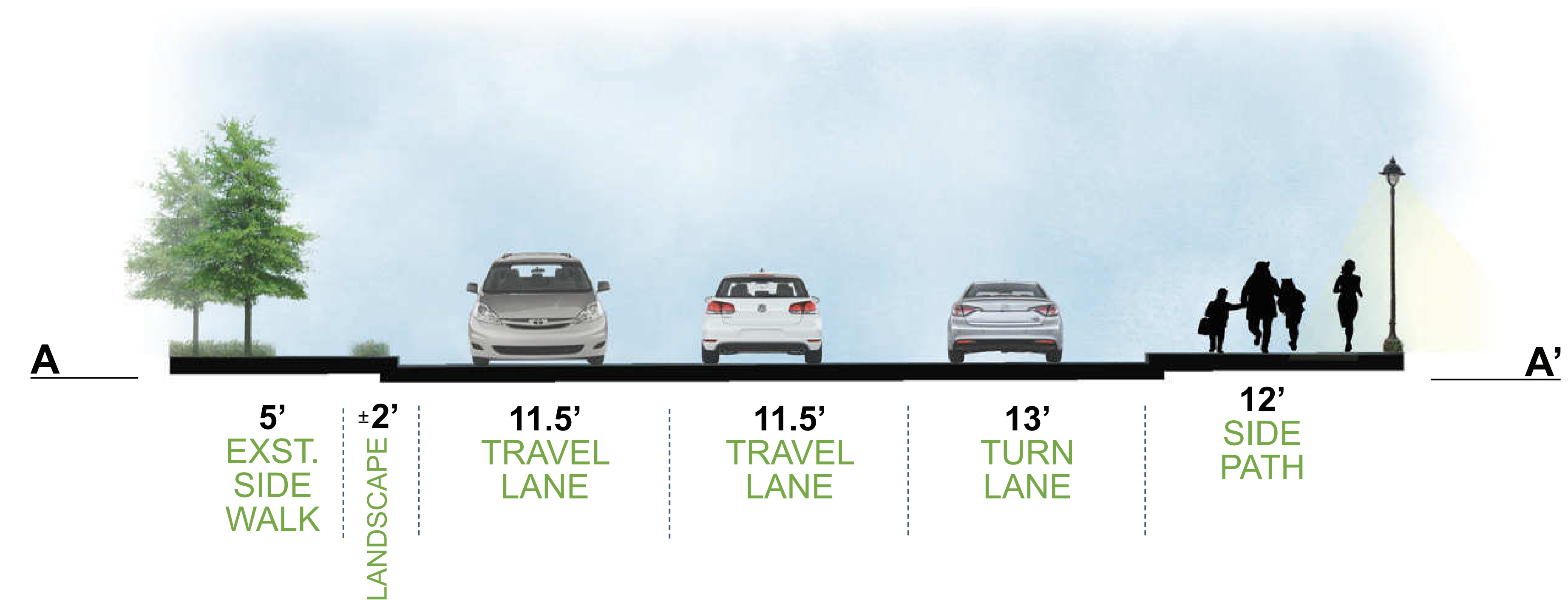
PHASE 1 | SHEET 1-4



NOT TO SCALE



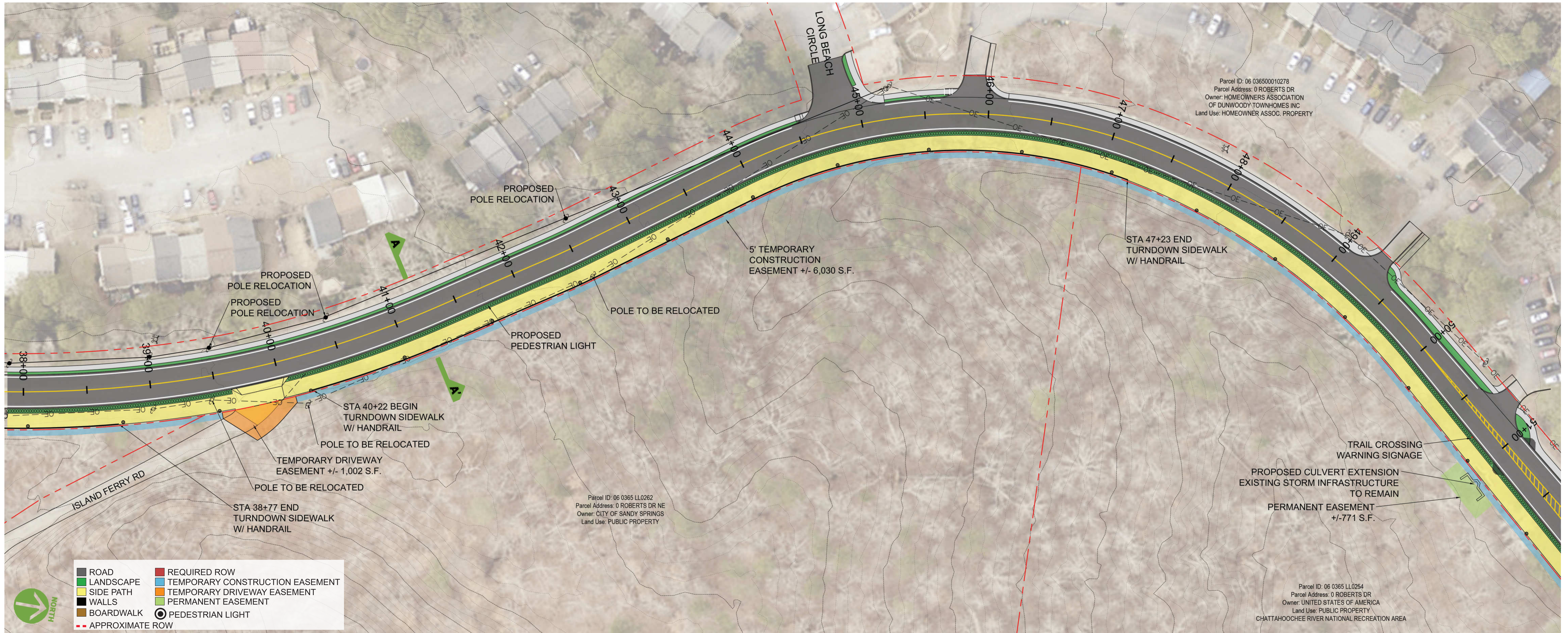
ROBERTS DRIVE AT ISLAND FORD PARKWAY
LOOKING NORTHEAST TOWARDS ENTRANCE DRIVE TO PARK



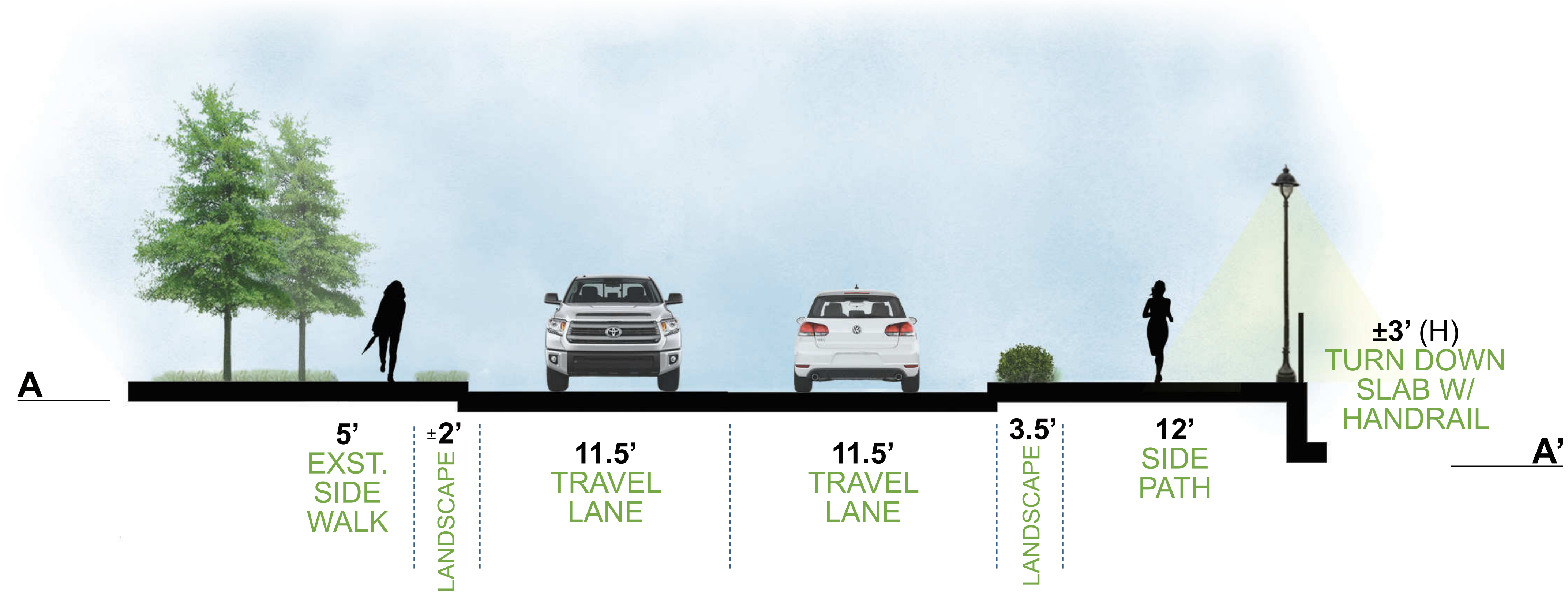
ROBERTS DRIVE SIDE PATH SCOPING STUDY | OPEN HOUSE

City of Sandy Springs, Georgia
October 28th, 2024

PHASE 1 | SHEET 1-5



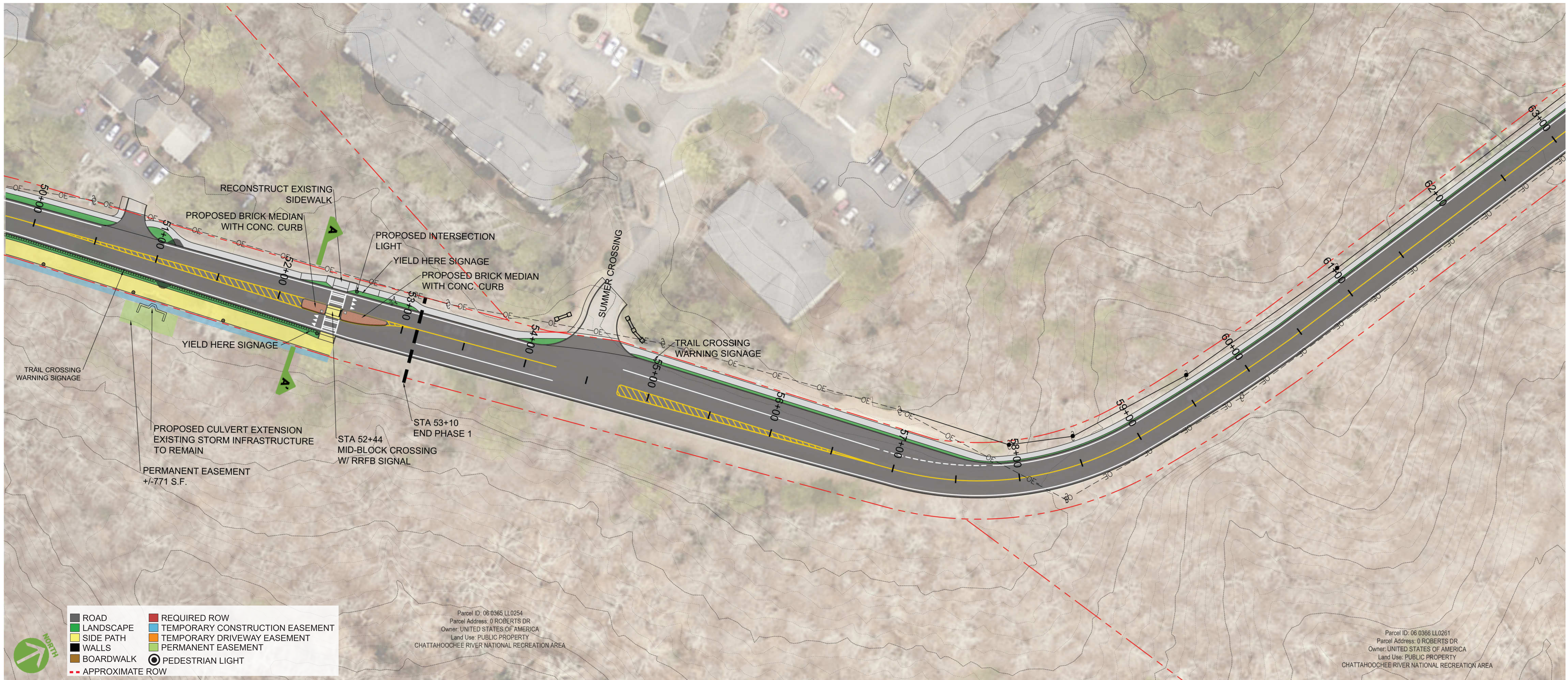
NOT TO SCALE



ROBERTS DRIVE SIDE PATH SCOPING STUDY | OPEN HOUSE

City of Sandy Springs, Georgia
October 28th, 2024

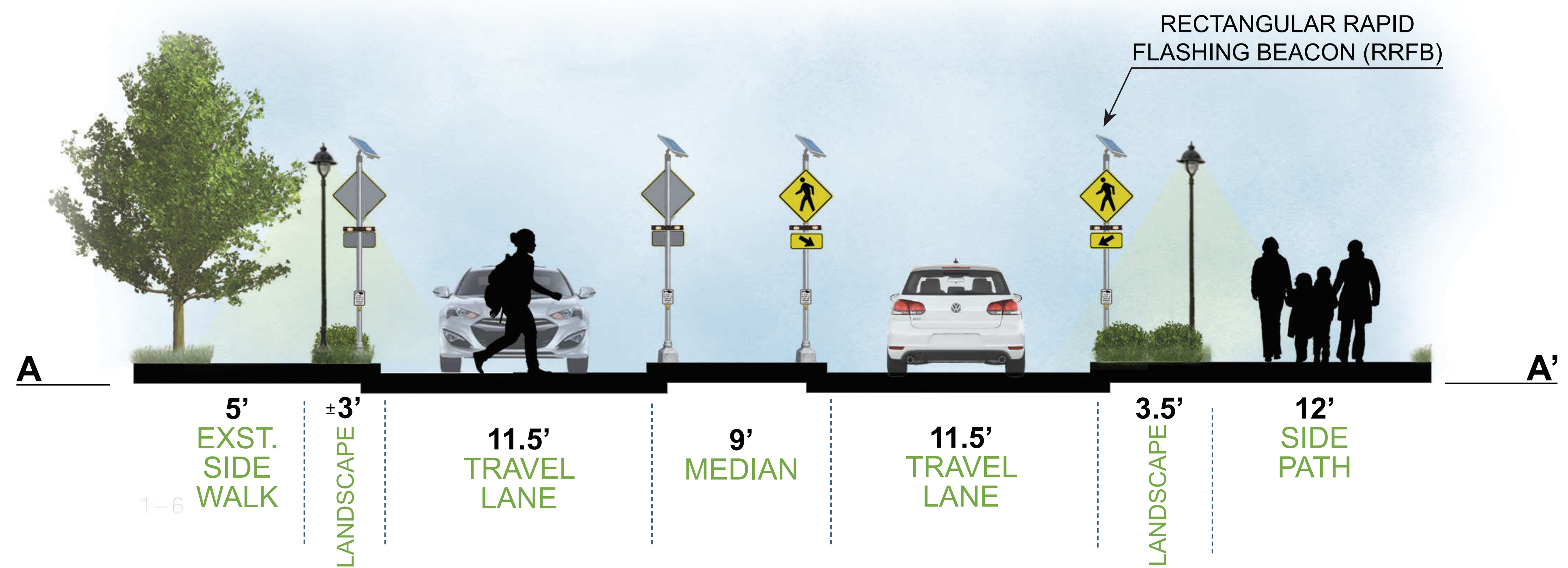
PHASE 1 | SHEET 1-6



NOT TO SCALE



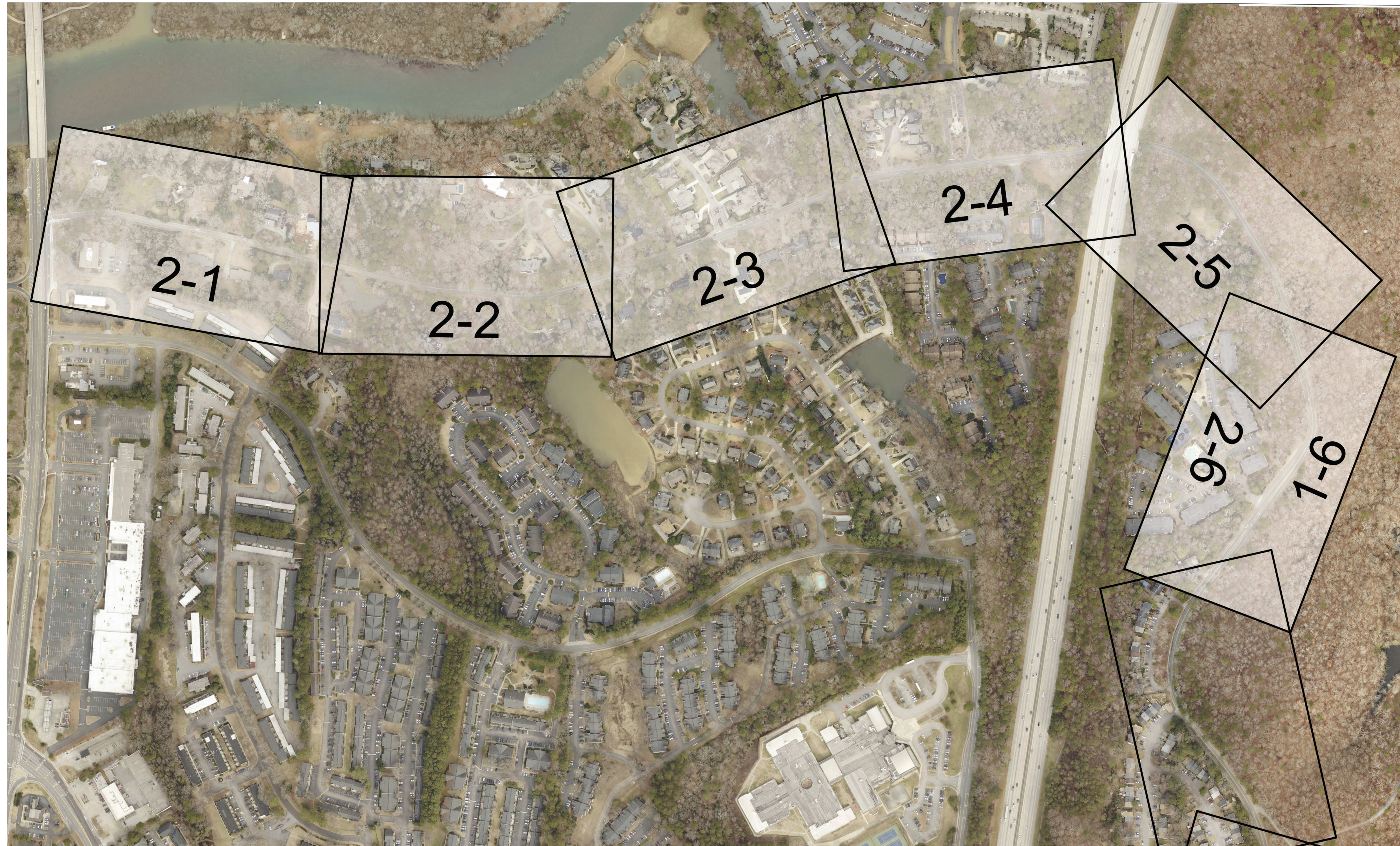
MID-BLOCK CROSSING
LOOKING NORTHEAST TOWARDS SUMMER CROSSING



ROBERTS DRIVE SIDE PATH SCOPING STUDY | OPEN HOUSE

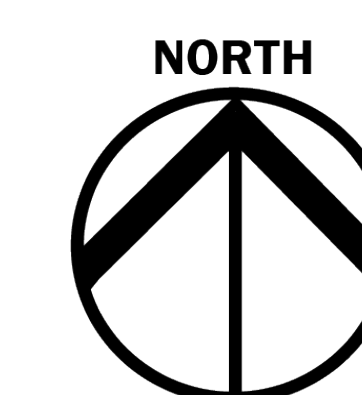
City of Sandy Springs, Georgia
October 28th, 2024

PHASE 2 OVERVIEW

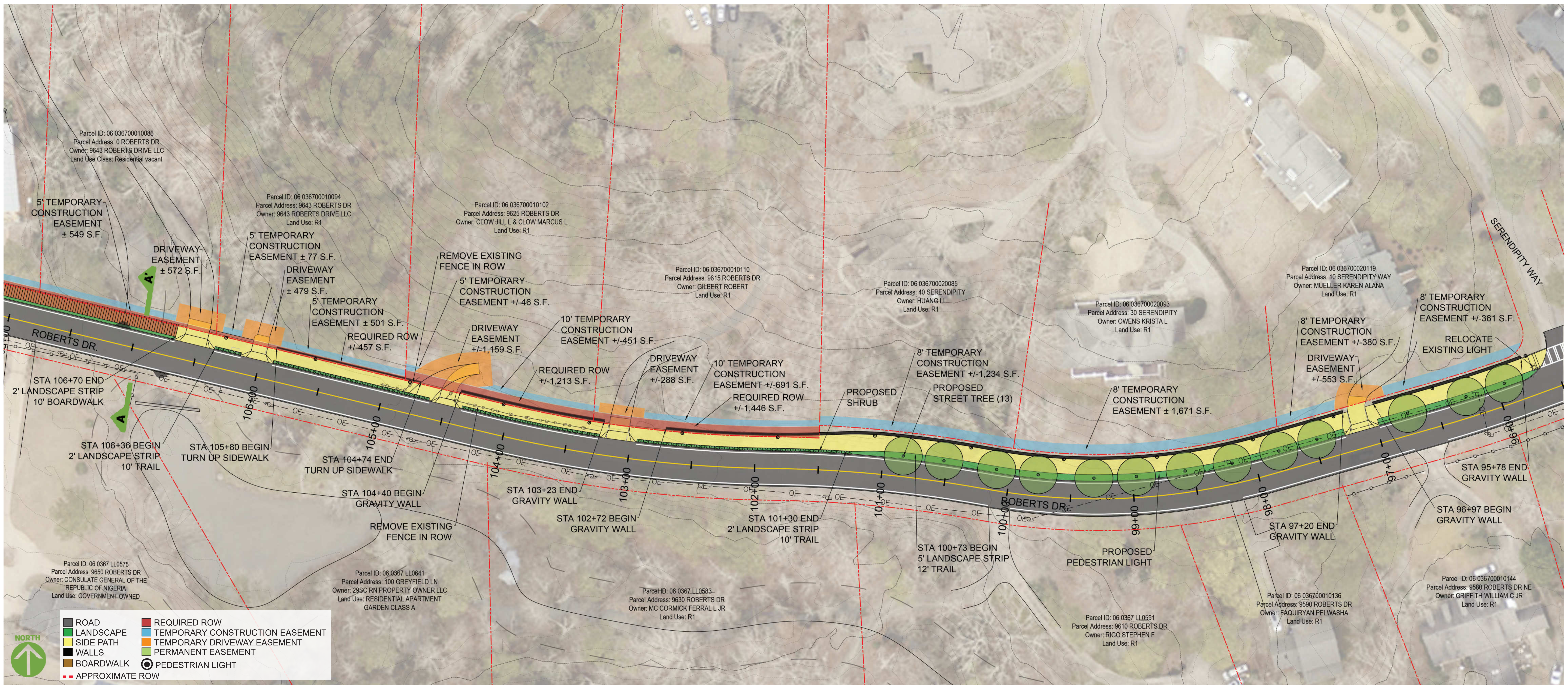


ROBERTS DRIVE SIDE PATH SCOPING STUDY | OPEN HOUSE

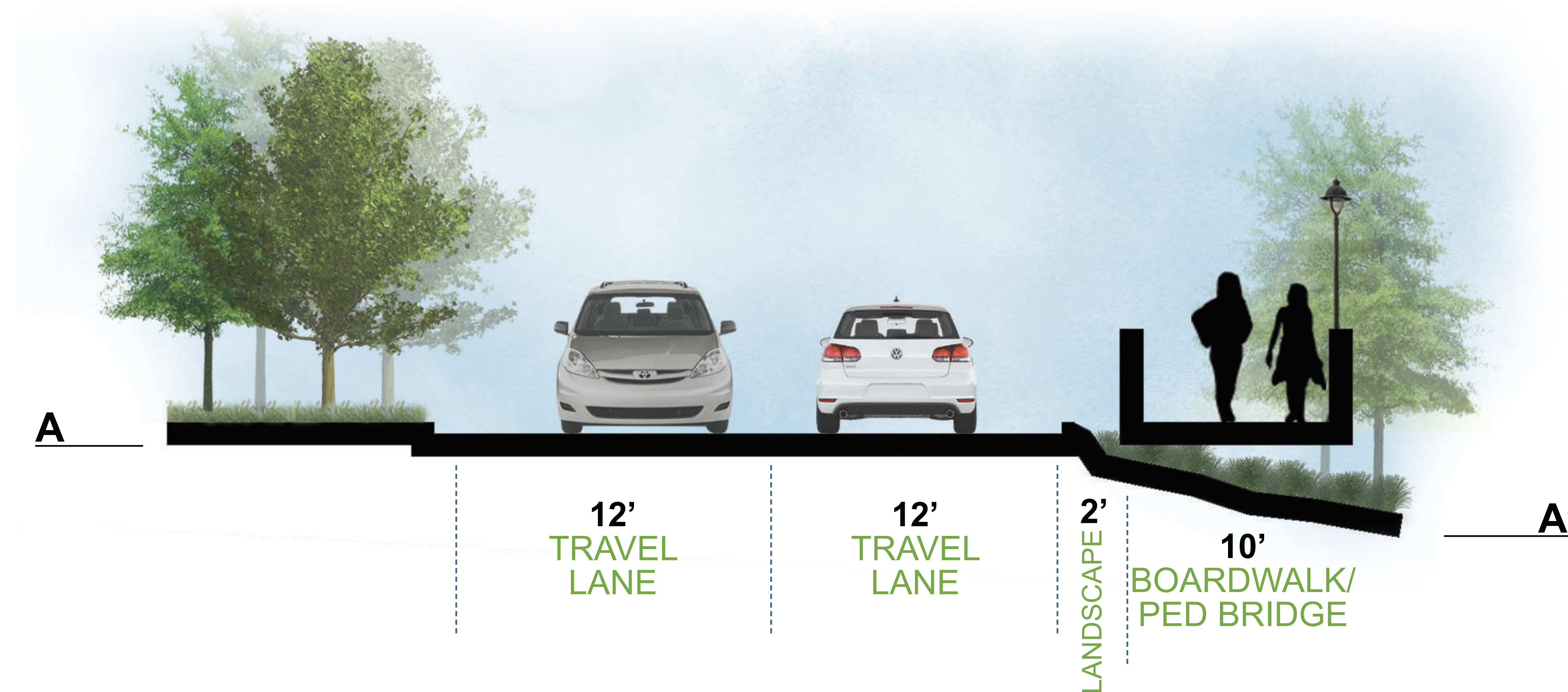
City of Sandy Springs, Georgia
October 28th, 2024



PHASE 2 | SHEET 2-2



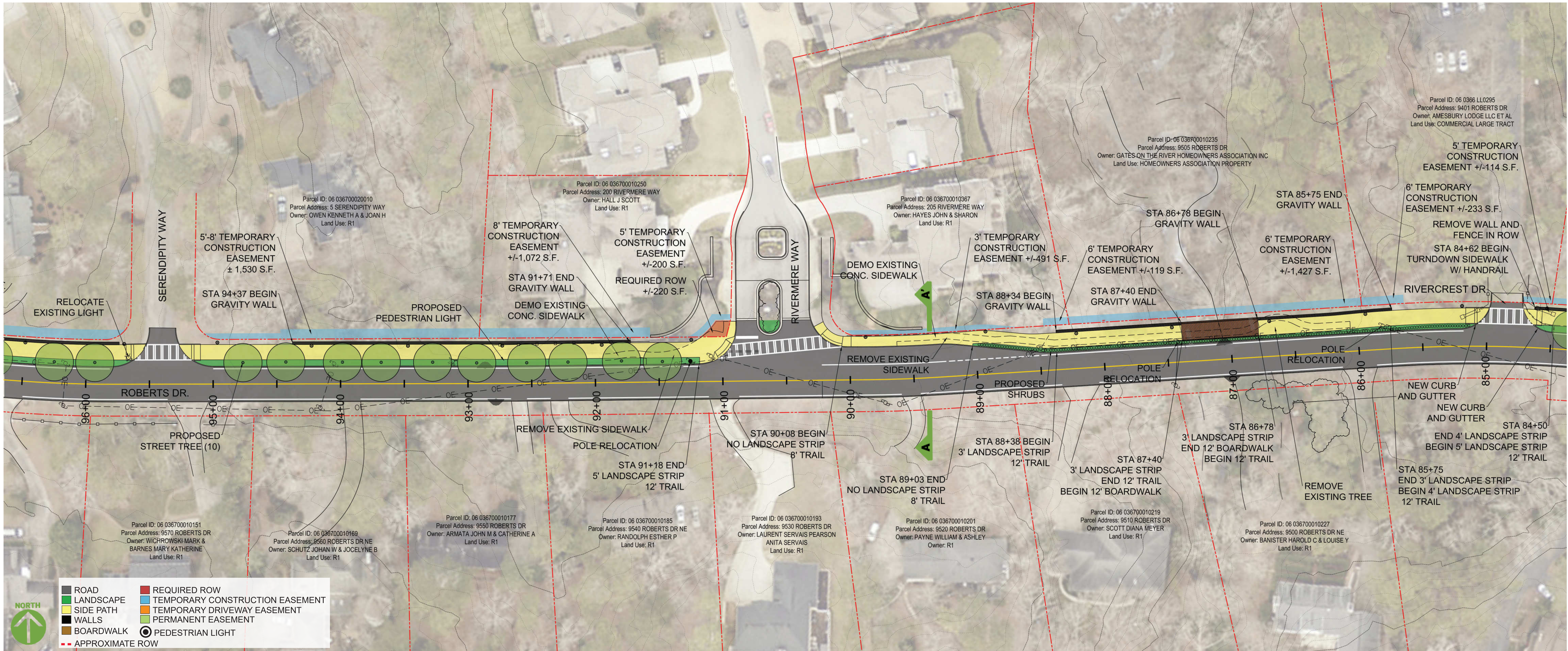
NOT TO SCALE



ROBERTS DRIVE SIDE PATH SCOPING STUDY | OPEN HOUSE

City of Sandy Springs, Georgia
October 28th, 2024

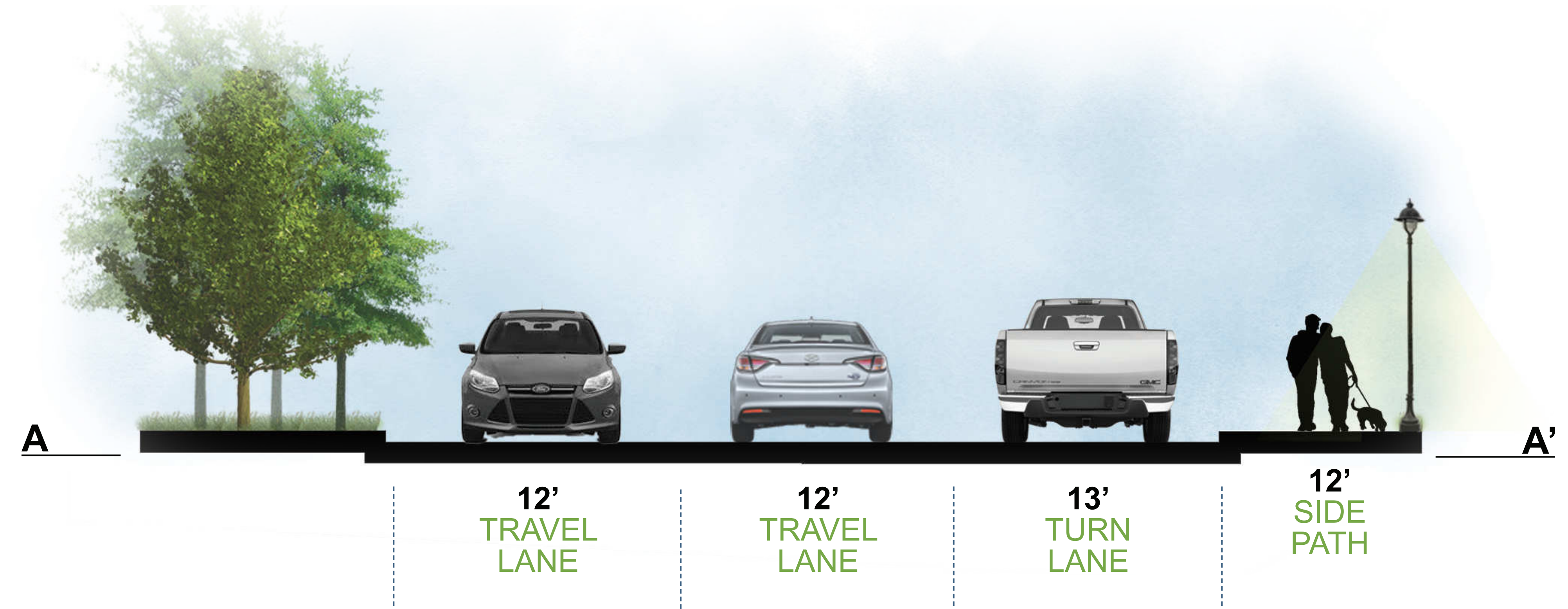
PHASE 2 | SHEET 2-3



NOT TO SCALE



PEDESTRIAN BRIDGE/BOARDWALK
VIEW AT STA 87+40 LOOKING NORTH

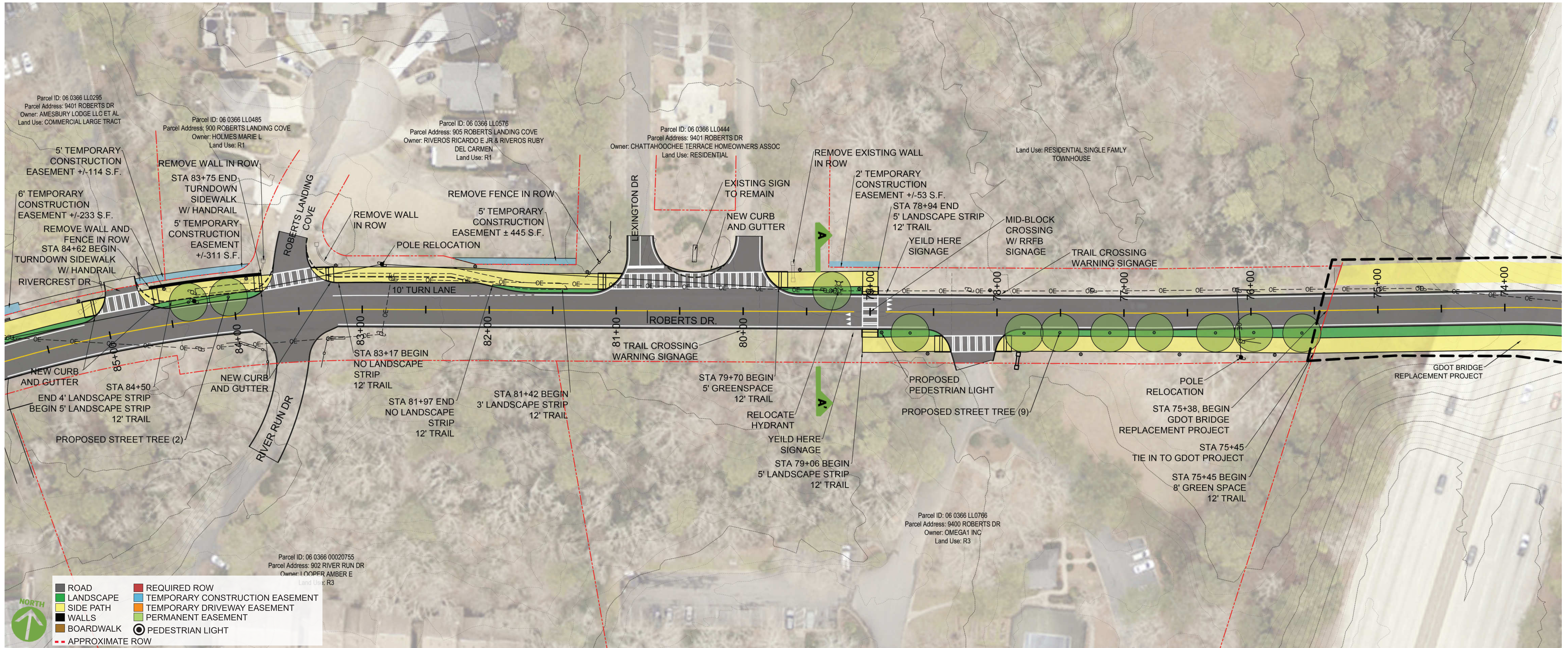


12' TRAVEL LANE 12' TRAVEL LANE 13' TURN LANE 12' SIDE PATH

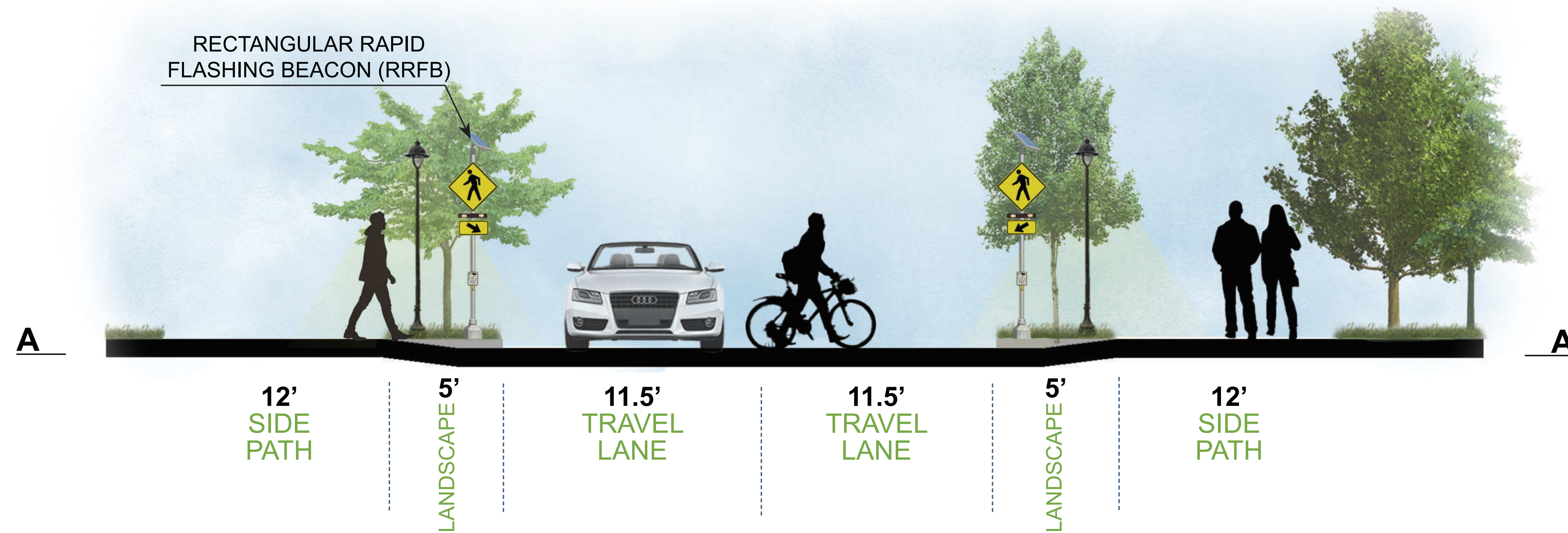
ROBERTS DRIVE SIDE PATH SCOPING STUDY | OPEN HOUSE

City of Sandy Springs, Georgia
October 28th, 2024

PHASE 2 | SHEET 2-4



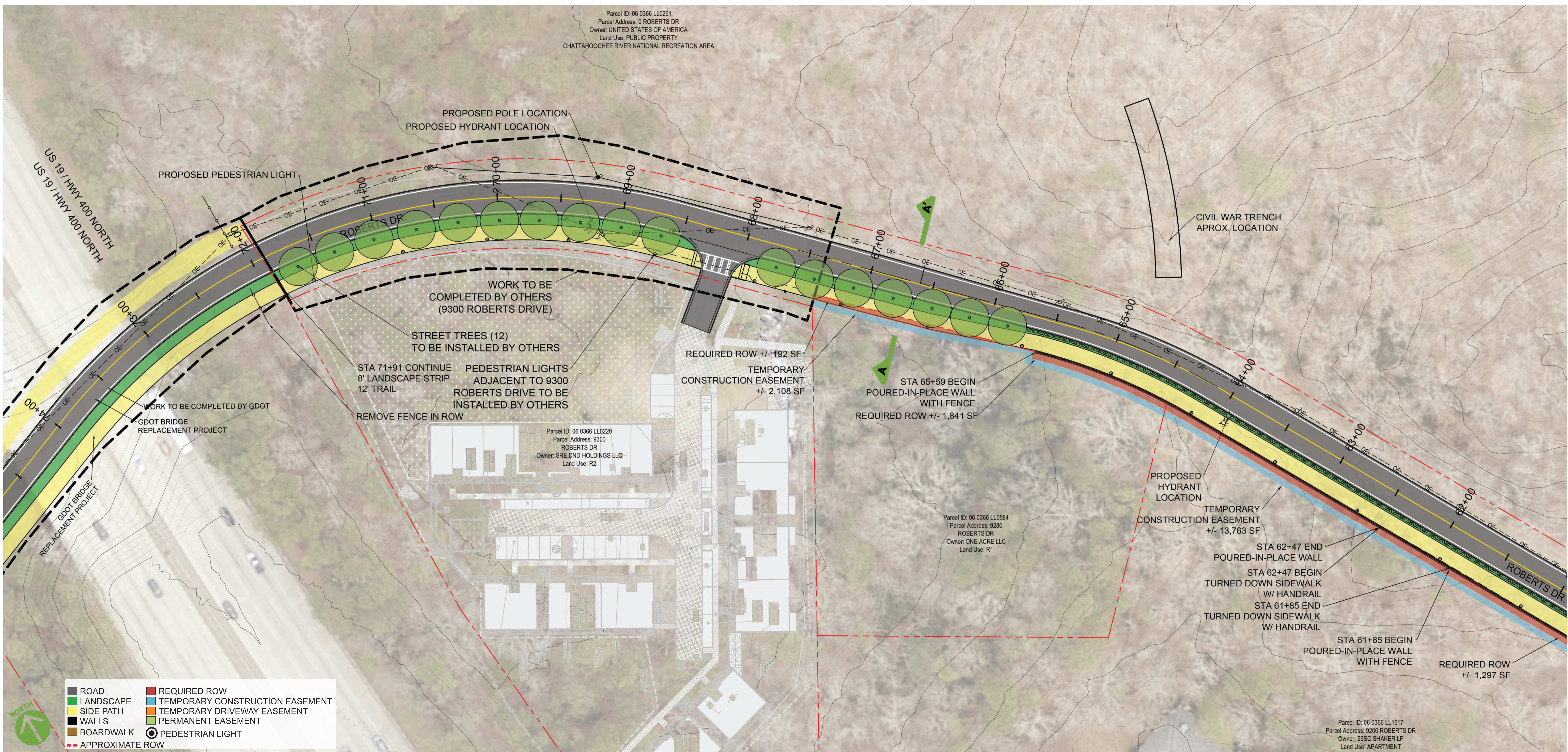
NOT TO SCALE



ROBERTS DRIVE SIDE PATH SCOPING STUDY | OPEN HOUSE

City of Sandy Springs, Georgia
October 28th, 2024

PHASE 2 | SHEET 2-5



NOT TO SCALE



TYPICAL VIEW
VIEW AT STA 61+00 LOOKING SOUTH



12' SIDE PATH
5' LANDSCAPE
11.5' TRAVEL LANE
11.5' TRAVEL LANE

ROBERTS DRIVE SIDE PATH SCOPING STUDY | OPEN HOUSE

City of Sandy Springs, Georgia
October 28th, 2024

ROBERTS DRIVE AT DUNWOODY PLACE | PHASE 1

VIEW AT STA 0+00, LOOKING NORTHEAST TOWARDS ROBERTS DRIVE

VIEW AT STA 2+25, LOOKING SOUTHWEST TOWARDS DUNWOODY PLACE



ROBERTS DRIVE AT ISLAND FORD PARKWAY | PHASE 1

VIEW AT STA 33+00, LOOKING NORTHEAST TOWARDS ISLAND FORD



EXISTING

VIEW AT STA 34+00, LOOKING SOUTH TOWARDS ISLAND FORD



EXISTING



PROPOSED



PROPOSED

MID-BLOCK CROSSING | PHASE 1

VIEW AT STA 51+50, LOOKING NORTHEAST TOWARDS SUMMER CROSSING



EXISTING

VIEW AT STA 52+75, LOOKING SOUTHWEST TOWARDS PEDESTRIAN CROSSING



EXISTING



PROPOSED

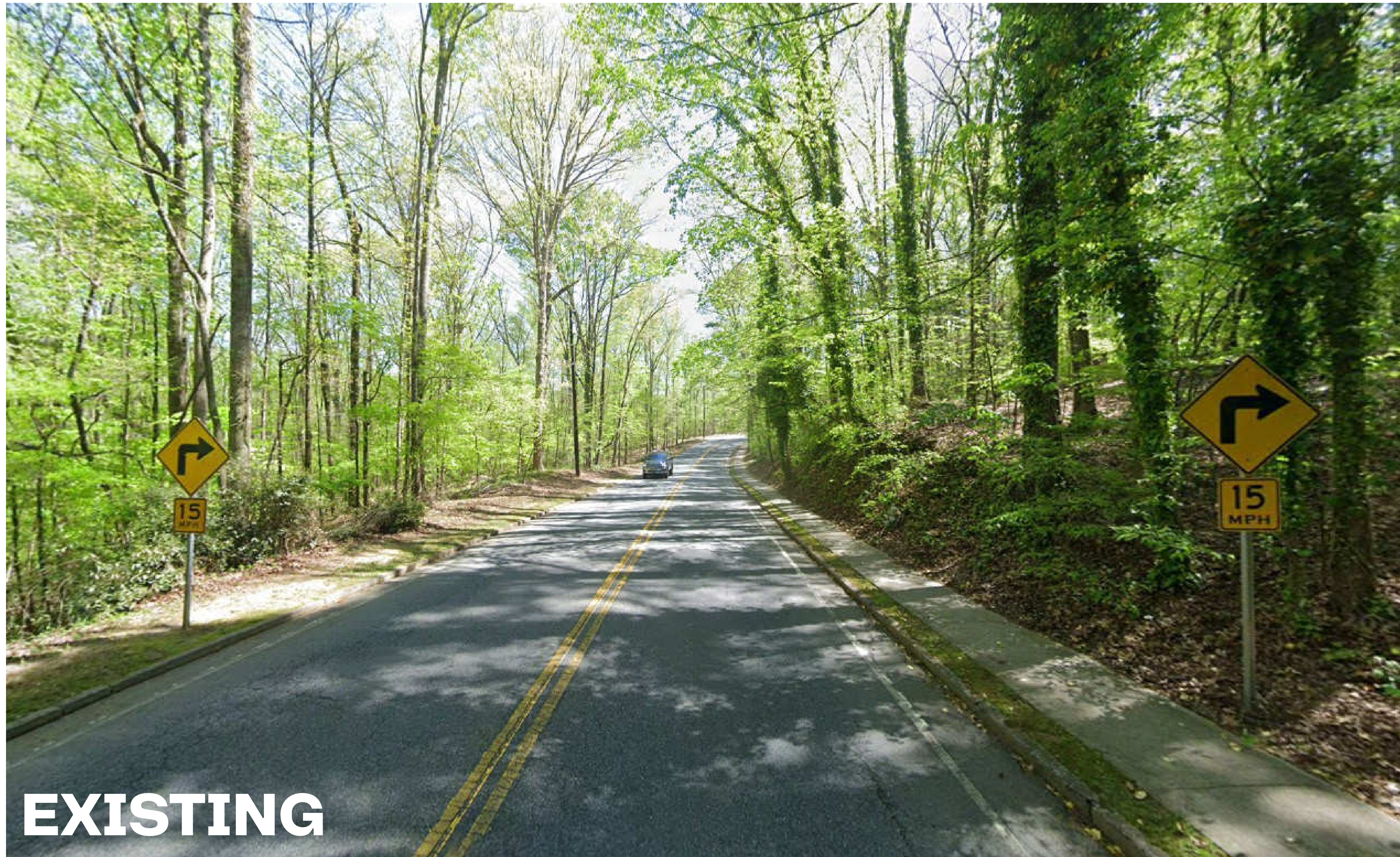


PROPOSED

TYPICAL VIEW | PHASE 2

VIEW AT STA 61+00

VIEW AT STA 66+00



EXISTING



EXISTING



PROPOSED



PROPOSED

PEDESTRIAN BRIDGE/BOARDWALK | PHASE 2

VIEW AT STA 86+50, LOOKING EAST

VIEW AT STA 87+40, LOOKING NORTH



EXISTING



EXISTING



PROPOSED



PROPOSED

ROBERTS DRIVE AT ROSWELL ROAD | PHASE 2

VIEW AT STA 118+00, LOOKING EAST TOWARDS ROSWELL ROAD



VIEW AT STA 120+00, LOOKING WEST TOWARDS ROBERTS DRIVE



ROBERTS DRIVE SIDE PATH SCOPING STUDY | OPEN HOUSE

City of Sandy Springs, Georgia
October 28th, 2024