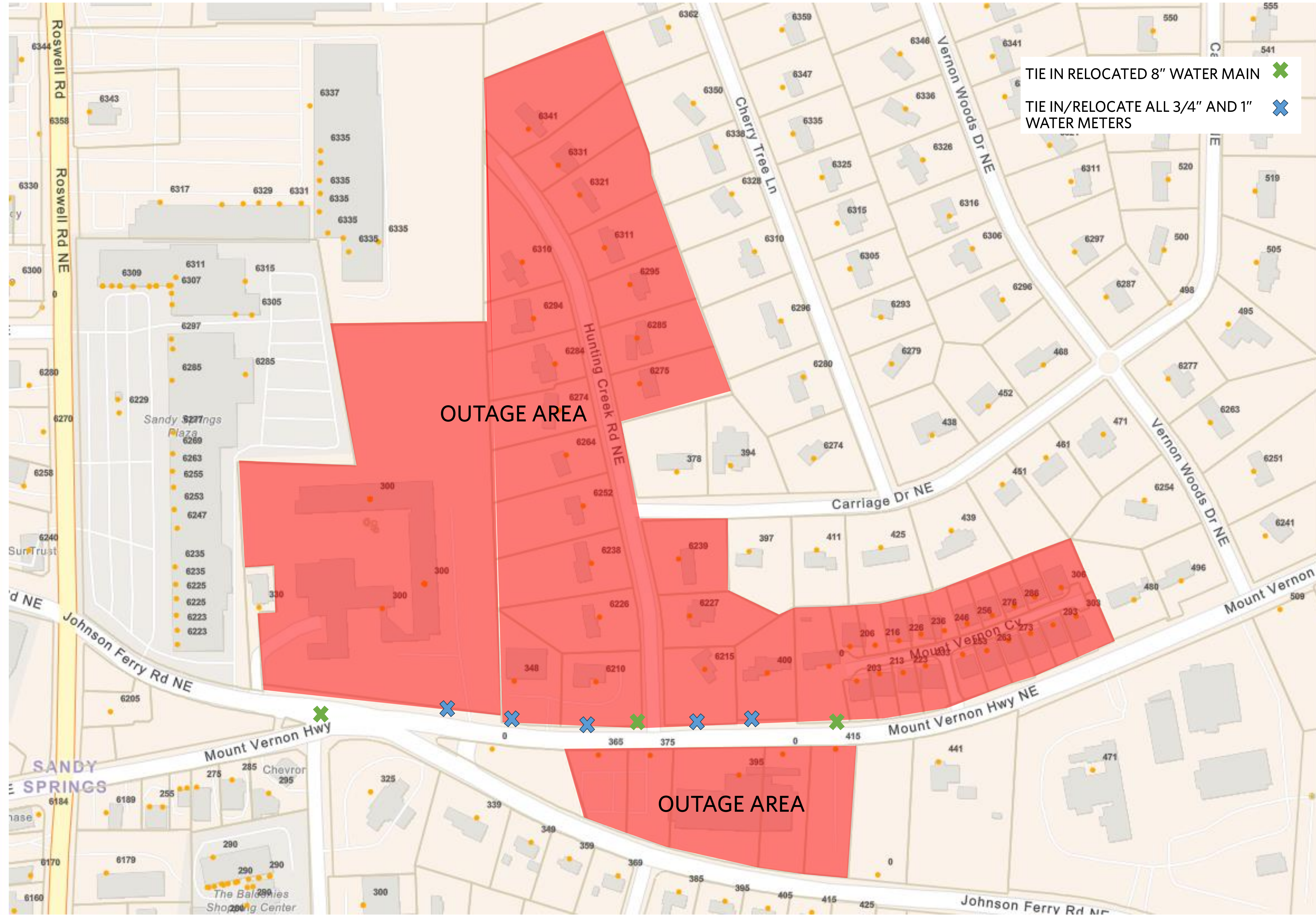


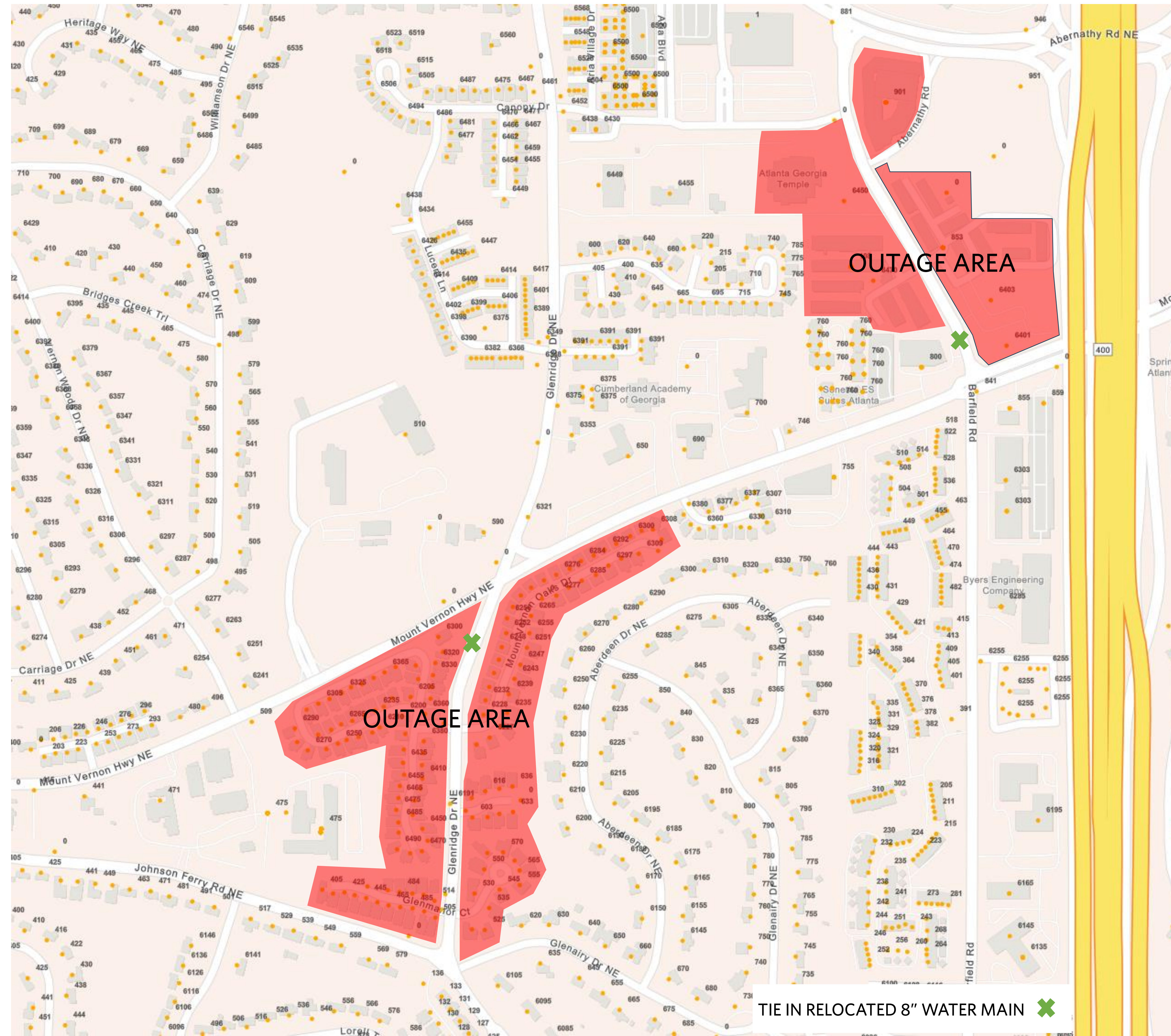
TS191 – 8” Water Main Tie-In 10/13, 10/14



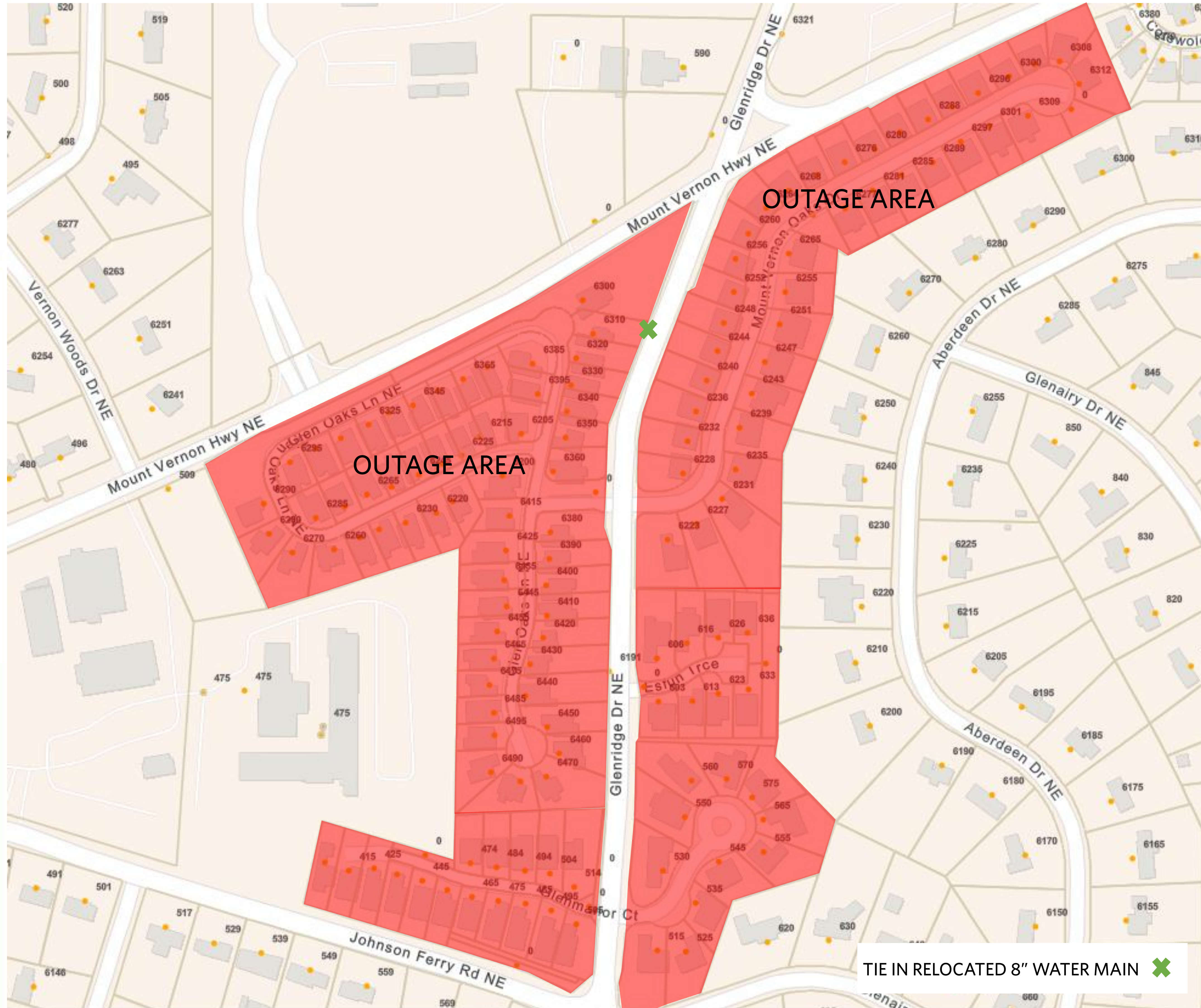
Affected Addresses

6210	HUNTING CREEK	RD	30328
6226	HUNTING CREEK	RD	30328
6238	HUNTING CREEK	RD	30328
6252	HUNTING CREEK	RD	30328
6264	HUNTING CREEK	RD	30328
6274	HUNTING CREEK	RD	30328
6284	HUNTING CREEK	RD	30328
6239	HUNTING CREEK	RD	30328
6227	HUNTING CREEK	RD	30328
6310	HUNTING CREEK	RD	30328
6294	HUNTING CREEK	RD	30328
6341	HUNTING CREEK	RD	30328
6331	HUNTING CREEK	RD	30328
6321	HUNTING CREEK	RD	30328
6311	HUNTING CREEK	RD	30328
6295	HUNTING CREEK	RD	30328
6285	HUNTING CREEK	RD	30328
6275	HUNTING CREEK	RD	30328
6215	HUNTING CREEK	RD	30328
300	JOHNSON FERRY	RD	30328
395	MOUNT VERNON	HWY NE	30328
348	MOUNT VERNON	HWY NE	30328
400	MOUNT VERNON	HWY NE	30328
441	MOUNT VERNON	HWY NE	30328
206	MOUNT VERNON	CV	30328
216	MOUNT VERNON	CV	30328
226	MOUNT VERNON	CV	30328
236	MOUNT VERNON	CV	30328
246	MOUNT VERNON	CV	30328
256	MOUNT VERNON	CV	30328
276	MOUNT VERNON	CV	30328
286	MOUNT VERNON	CV	30328
296	MOUNT VERNON	CV	30328
306	MOUNT VERNON	CV	30328
303	MOUNT VERNON	CV	30328
293	MOUNT VERNON	CV	30328
283	MOUNT VERNON	CV	30328
273	MOUNT VERNON	CV	30328
263	MOUNT VERNON	CV	30328
253	MOUNT VERNON	CV	30328
233	MOUNT VERNON	CV	30328
223	MOUNT VERNON	CV	30328
213	MOUNT VERNON	CV	30328
203	MOUNT VERNON	CV	30328

TS192 – 8" Water Main Tie-In 10/15



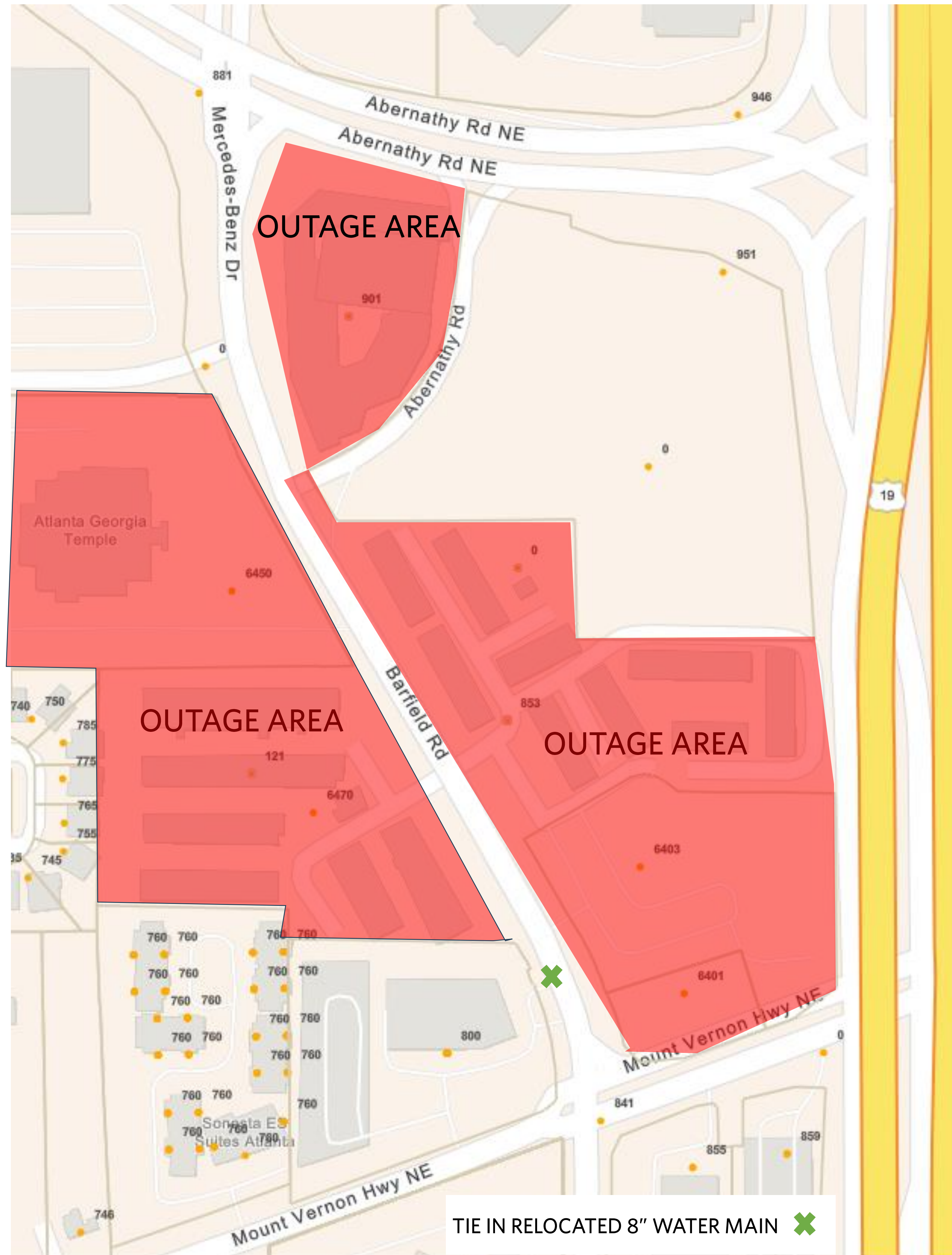
TS192 – 8" Water Main Tie-In at Glenridge 10/15 Affected Addresses



6200	GLEN OAKS	LN	30328	6239	MOUNT VERNON OAKS	DR	30328
6205	GLEN OAKS	LN	30328	6277	MOUNT VERNON OAKS	DR	30328
6210	GLEN OAKS	LN	30328	6312	MOUNT VERNON OAKS	DR	30328
6215	GLEN OAKS	LN	30328	6264	MOUNT VERNON OAKS	DR	30328
6220	GLEN OAKS	LN	30328	6289	MOUNT VERNON OAKS	DR	30328
6225	GLEN OAKS	LN	30328	6297	MOUNT VERNON OAKS	DR	30328
6230	GLEN OAKS	LN	30328	6235	MOUNT VERNON OAKS	DR	30328
6235	GLEN OAKS	LN	30328	6296	MOUNT VERNON OAKS	DR	30328
6240	GLEN OAKS	LN	30328	6223	MOUNT VERNON OAKS	DR	30328
6245	GLEN OAKS	LN	30328	6244	MOUNT VERNON OAKS	DR	30328
6250	GLEN OAKS	LN	30328	6268	MOUNT VERNON OAKS	DR	30328
6255	GLEN OAKS	LN	30328	6280	MOUNT VERNON OAKS	DR	30328
6260	GLEN OAKS	LN	30328	6256	MOUNT VERNON OAKS	DR	30328
6265	GLEN OAKS	LN	30328	6243	MOUNT VERNON OAKS	DR	30328
6270	GLEN OAKS	LN	30328	6272	MOUNT VERNON OAKS	DR	30328
6275	GLEN OAKS	LN	30328	6292	MOUNT VERNON OAKS	DR	30328
6280	GLEN OAKS	LN	30328	6236	MOUNT VERNON OAKS	DR	30328
6285	GLEN OAKS	LN	30328	6309	MOUNT VERNON OAKS	DR	30328
6290	GLEN OAKS	LN	30328	6301	MOUNT VERNON OAKS	DR	30328
6295	GLEN OAKS	LN	30328	6231	MOUNT VERNON OAKS	DR	30328
6300	GLEN OAKS	LN	30328	6232	MOUNT VERNON OAKS	DR	30328
6305	GLEN OAKS	LN	30328	6240	MOUNT VERNON OAKS	DR	30328
6310	GLEN OAKS	LN	30328	6284	MOUNT VERNON OAKS	DR	30328
6315	GLEN OAKS	LN	30328	6308	MOUNT VERNON OAKS	DR	30328
6320	GLEN OAKS	LN	30328	6252	MOUNT VERNON OAKS	DR	30328
6325	GLEN OAKS	LN	30328	6265	MOUNT VERNON OAKS	DR	30328
6330	GLEN OAKS	LN	30328	6281	MOUNT VERNON OAKS	DR	30328
6335	GLEN OAKS	LN	30328	6251	MOUNT VERNON OAKS	DR	30328
6340	GLEN OAKS	LN	30328	6255	MOUNT VERNON OAKS	DR	30328
6345	GLEN OAKS	LN	30328	6288	MOUNT VERNON OAKS	DR	30328
6350	GLEN OAKS	LN	30328	6304	MOUNT VERNON OAKS	DR	30328
6355	GLEN OAKS	LN	30328	550	GLENMANOR	CT	30328
6360	GLEN OAKS	LN	30328	530	GLENMANOR	CT	30328
6365	GLEN OAKS	LN	30328	555	GLENMANOR	CT	30328
6375	GLEN OAKS	LN	30328	525	GLENMANOR	CT	30328
6380	GLEN OAKS	LN	30328	485	GLENMANOR	CT	30328
6385	GLEN OAKS	LN	30328	425	GLENMANOR	CT	30328
6390	GLEN OAKS	LN	30328	484	GLENMANOR	CT	30328
6395	GLEN OAKS	LN	30328	504	GLENMANOR	CT	30328
6400	GLEN OAKS	LN	30328	514	GLENMANOR	CT	30328
6410	GLEN OAKS	LN	30328	455	GLENMANOR	CT	30328
6415	GLEN OAKS	LN NE	30328	435	GLENMANOR	CT	30328
6420	GLEN OAKS	LN	30328	465	GLENMANOR	CT	30328
6425	GLEN OAKS	LN	30328	474	GLENMANOR	CT	30328
6430	GLEN OAKS	LN	30328	405	GLENMANOR	CT	30328
6435	GLEN OAKS	LN	30328	415	GLENMANOR	CT	30328
6440	GLEN OAKS	LN	30328	495	GLENMANOR	CT	30328
6445	GLEN OAKS	LN	30328	494	GLENMANOR	CT	30328
6450	GLEN OAKS	LN	30328	475	GLENMANOR	CT	30328
6455	GLEN OAKS	LN	30328	535	GLENMANOR	CT	30328
6460	GLEN OAKS	LN	30328	560	GLENMANOR	CT	30328
6465	GLEN OAKS	LN	30328	565	GLENMANOR	CT	30328
6470	GLEN OAKS	LN	30328	515	GLENMANOR	CT	30328
6475	GLEN OAKS	LN	30328	570	GLENMANOR	CT	30328
6480	GLEN OAKS	LN	30328	575	GLENMANOR	CT	30328
6485	GLEN OAKS	LN	30328	545	GLENMANOR	CT	30328
6490	GLEN OAKS	LN	30328	505	GLENMANOR	CT	30328
6495	GLEN OAKS	LN NE	30328	445	GLENMANOR	CT	30328
6228	MOUNT VERNON OAKS	DR	30328	613	ESFUN	TRC	30328
6300	MOUNT VERNON OAKS	DR	30328	606	ESFUN	TRC	30328
6248	MOUNT VERNON OAKS	DR	30328	636	ESFUN	TRC	30328
6285	MOUNT VERNON OAKS	DR	30328	623	ESFUN	TRC	30328
6260	MOUNT VERNON OAKS	DR	30328	633	ESFUN	TRC	30328
6227	MOUNT VERNON OAKS	DR	30328	616	ESFUN	TRC	30328
6247	MOUNT VERNON OAKS	DR	30328	626	ESFUN	TRC	30328
6276	MOUNT VERNON OAKS	DR	30328	603	ESFUN	TRC	30328

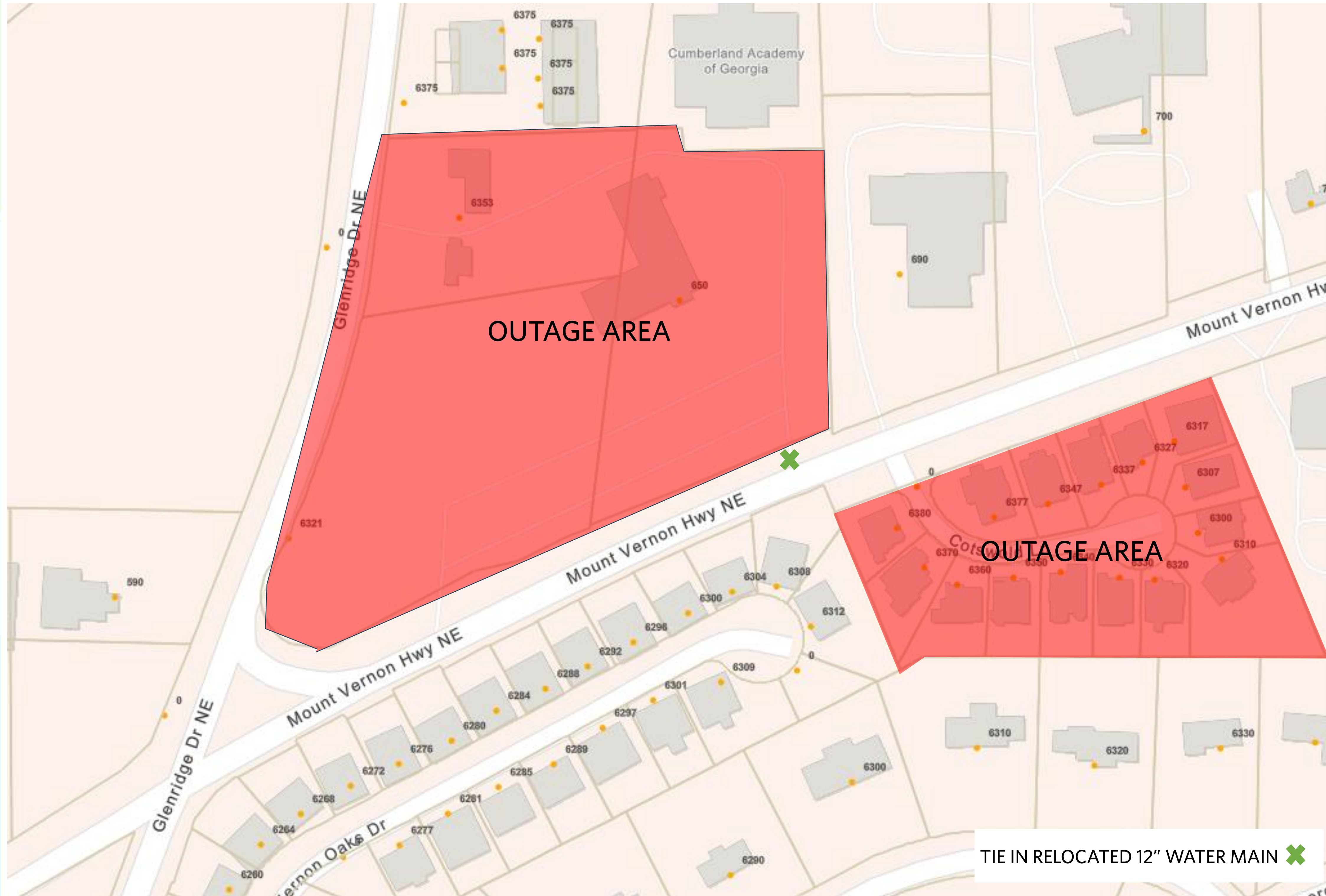
TS192 – 8” Water Main Tie-In at Barfield 10/15

Affected Addresses



6430	CHARIOT ST 30328	801	PERENNIAL DR 30328
6432	CHARIOT ST 30328	803	PERENNIAL DR 30328
6434	CHARIOT ST 30328	805	PERENNIAL DR 30328
6436	CHARIOT ST 30328	807	PERENNIAL DR 30328
6438	CHARIOT ST 30328	809	PERENNIAL DR 30328
6440	CHARIOT ST 30328	811	PERENNIAL DR 30328
6442	CHARIOT ST 30328	813	PERENNIAL DR 30328
6444	CHARIOT ST 30328	815	PERENNIAL DR 30328
6446	CHARIOT ST 30328	817	PERENNIAL DR 30328
6448	CHARIOT ST 30328	819	PERENNIAL DR 30328
6450	CHARIOT ST 30328	821	PERENNIAL DR 30328
6452	CHARIOT ST 30328	823	PERENNIAL DR 30328
6422	PAULSON PL 30328	825	PERENNIAL DR 30328
6420	PAULSON PL 30328	827	PERENNIAL DR 30328
6418	PAULSON PL 30328	835	PERENNIAL DR 30328
6416	PAULSON PL 30328	837	PERENNIAL DR 30328
6414	PAULSON PL 30328	839	PERENNIAL DR 30328
6412	PAULSON PL 30328	841	PERENNIAL DR 30328
6410	PAULSON PL 30328	843	PERENNIAL DR 30328
6408	PAULSON PL 30328	845	PERENNIAL DR 30328
6406	PAULSON PL 30328	847	PERENNIAL DR 30328
6404	PAULSON PL 30328	849	PERENNIAL DR 30328
6401	PAULSON PL 30328	851	PERENNIAL DR 30328
6403	PAULSON PL 30328	853	PERENNIAL DR 30328
6405	PAULSON PL 30328	855	PERENNIAL DR 30328
6407	PAULSON PL 30328	857	PERENNIAL DR 30328
6409	PAULSON PL 30328	859	PERENNIAL DR 30328
6411	PAULSON PL 30328	861	PERENNIAL DR 30328
6413	PAULSON PL 30328	865	PERENNIAL DR 30328
6415	PAULSON PL 30328	867	PERENNIAL DR 30328
6417	PAULSON PL 30328	869	PERENNIAL DR 30328
6419	PAULSON PL 30328	871	PERENNIAL DR 30328
6450	BARFIELD RD 30328	873	PERENNIAL DR 30328
901	ABERNATH' RD 30328	875	PERENNIAL DR 30328
6401	BARFIELD RD 30328	877	PERENNIAL DR 30328
		6414	GRANVILLE CT 30328

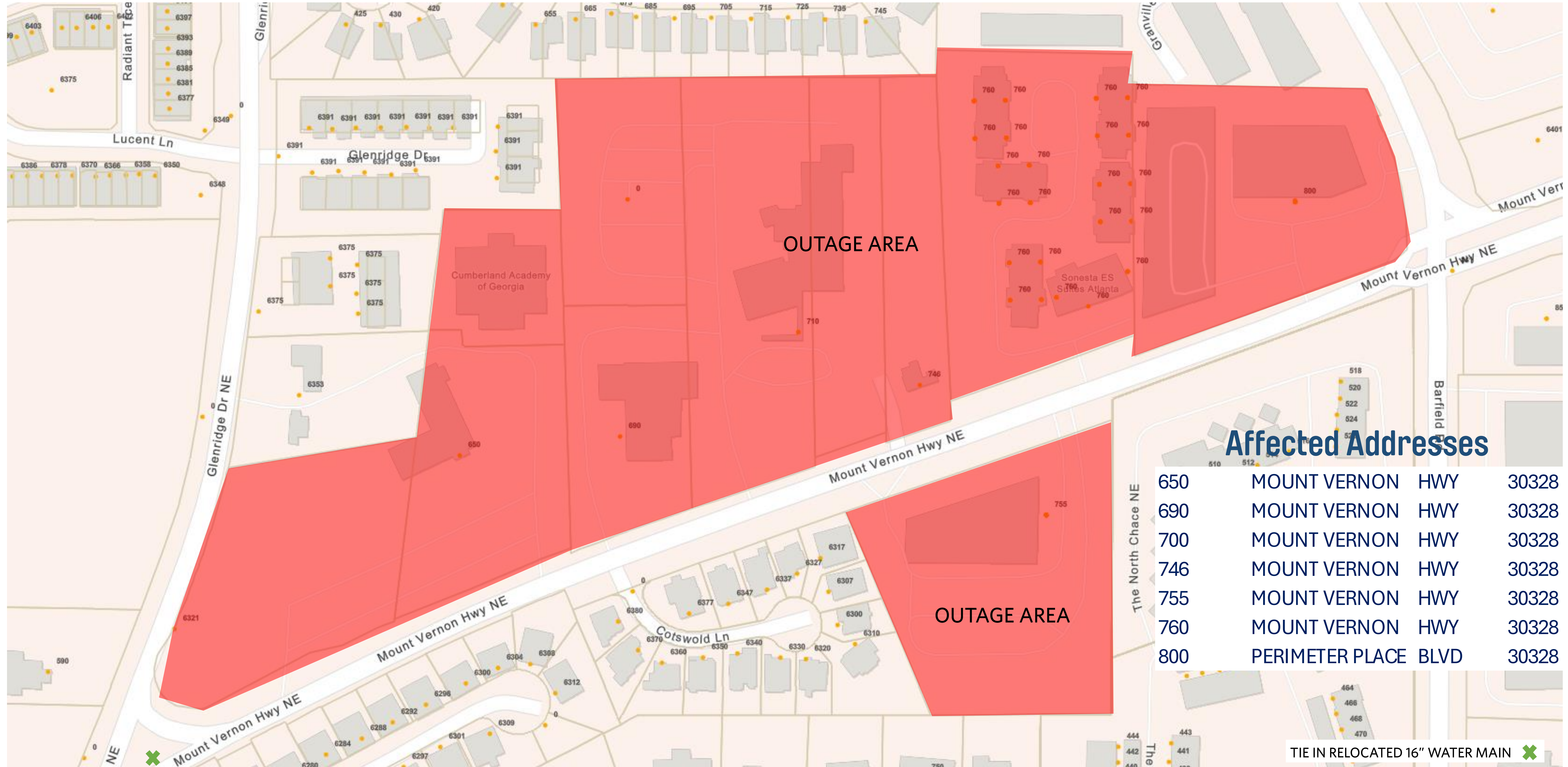
TS192 – 12” Water Main Tie-In 10/16



Affected Addresses

690	MOUNT VERNON	HWY	30328
6337	COTSWOLD	LN	30328
6377	COTSWOLD	LN	30328
6380	COTSWOLD	LN	30328
6360	COTSWOLD	LN	30328
6300	COTSWOLD	LN	30328
6317	COTSWOLD	LN	30328
6307	COTSWOLD	LN	30328
6347	COTSWOLD	LN	30328
6350	COTSWOLD	LN	30328
6370	COTSWOLD	LN	30328
6330	COTSWOLD	LN	30328
6340	COTSWOLD	LN	30328
6327	COTSWOLD	LN	30328
6327	COTSWOLD	LN	30328
6320	COTSWOLD	LN	30328
6310	COTSWOLD	LN	30328
6321	GLENRIDGE	DR	30328

TS192 – 16" Water Main Tie-In 10/17



TIE IN RELOCATED 16" WATER MAIN X