

PROGRAMS

Tier One

Capital Sidewalk Program

Improve pedestrian access and safety by completing sidewalks throughout Sandy Springs.

TSPLOST Cost: \$16,000,000

Mid-Block Crossing Program

Design and construction of safe pedestrian access at key mid-block locations to improve safety and connectivity.

TSPLOST Cost: \$4,000,000

Bridge Program

Improves and replace existing bridges.

TSPLOST Cost: \$5,000,000

TSPLOST26

renewal

ROSWELL ROAD AT MORGAN FALLS ROAD INTERSECTION IMPROVEMENTS

Safety and traffic operational improvements at Roswell Road and Morgan Falls Road.

TSPLOST Cost: \$6,100,000



TSPLOST26
renewal

GLENRIDGE CONNECTOR AT JOHNSON FERRY ROAD INTERSECTION IMPROVEMENTS

Tier One

Funding for Design and Right-of-Way

TSPLOST Cost: \$3,300,000

Tier Two

Funding for Construction

TSPLOST Cost: \$3,951,123



Safety and operational improvements at the intersection of Johnson Ferry Road and the Glenridge Connector.

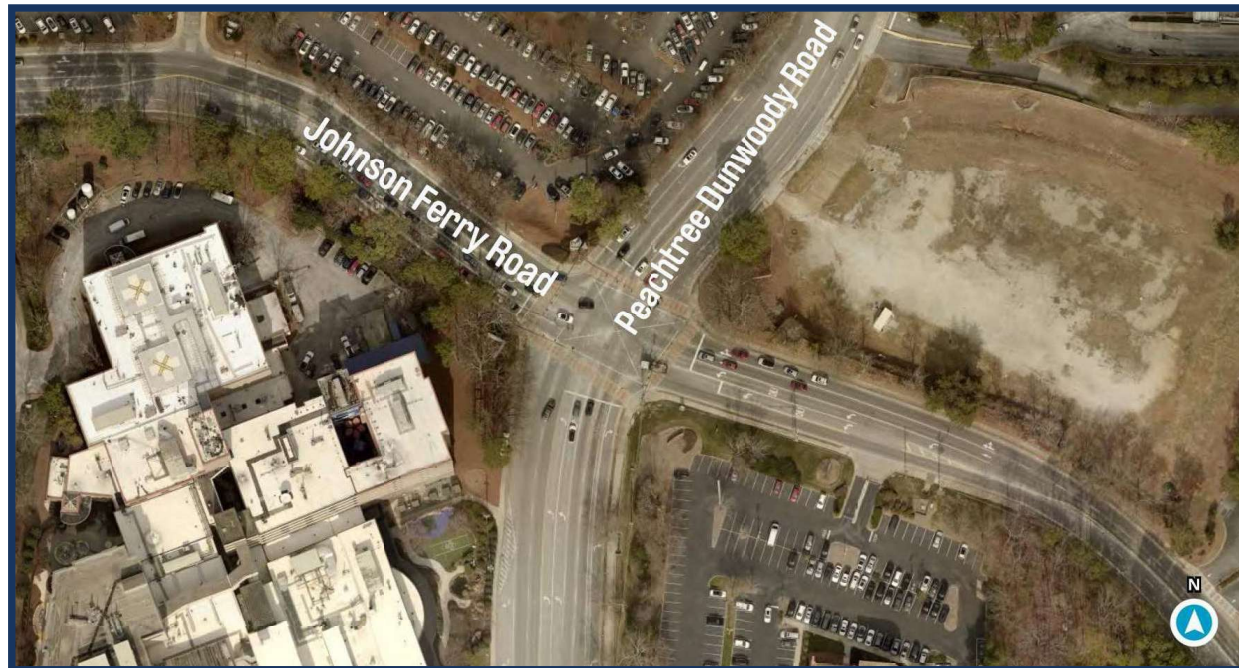
TSPLOST26

renewal

PEACHTREE DUNWOODY ROAD AT JOHNSON FERRY ROAD INTERSECTION IMPROVEMENTS-CONSTRUCTION

Funds construction of safety and operational improvements at the intersection of Peachtree Dunwoody Road and Johnson Ferry Road.

TSPLOST Cost: \$3,589,697

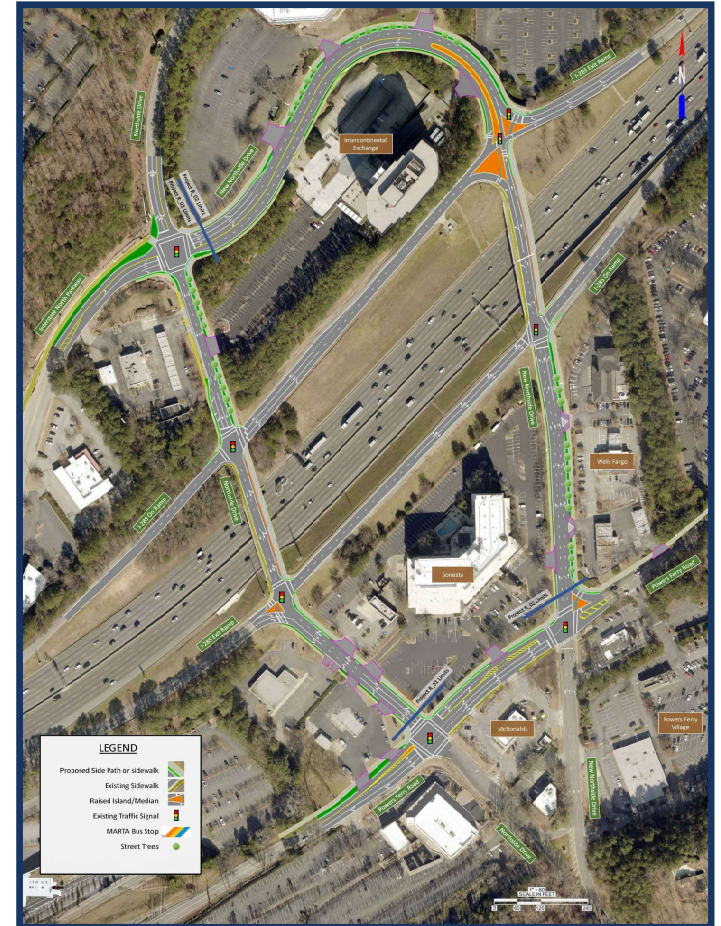


TSPLOST26
renewal

NORTHSIDE DRIVE AT I-285 CONCEPT DEVELOPMENT

Improve safety, mobility and pedestrian/bicycle access along Northside Drive between Interstate North Parkway and New Northside Drive.

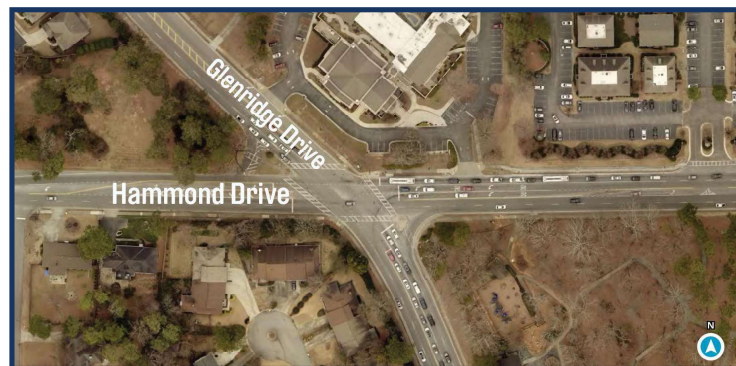
TSPLOST Cost: \$1,100,000



HAMMOND DRIVE CORRIDOR IMPROVEMENTS PHASE 2

Improve safety, mobility and pedestrian/bicycle access along Hammond Drive from Roswell Road to Boylston Drive and Barfield Road to Glenridge Drive.

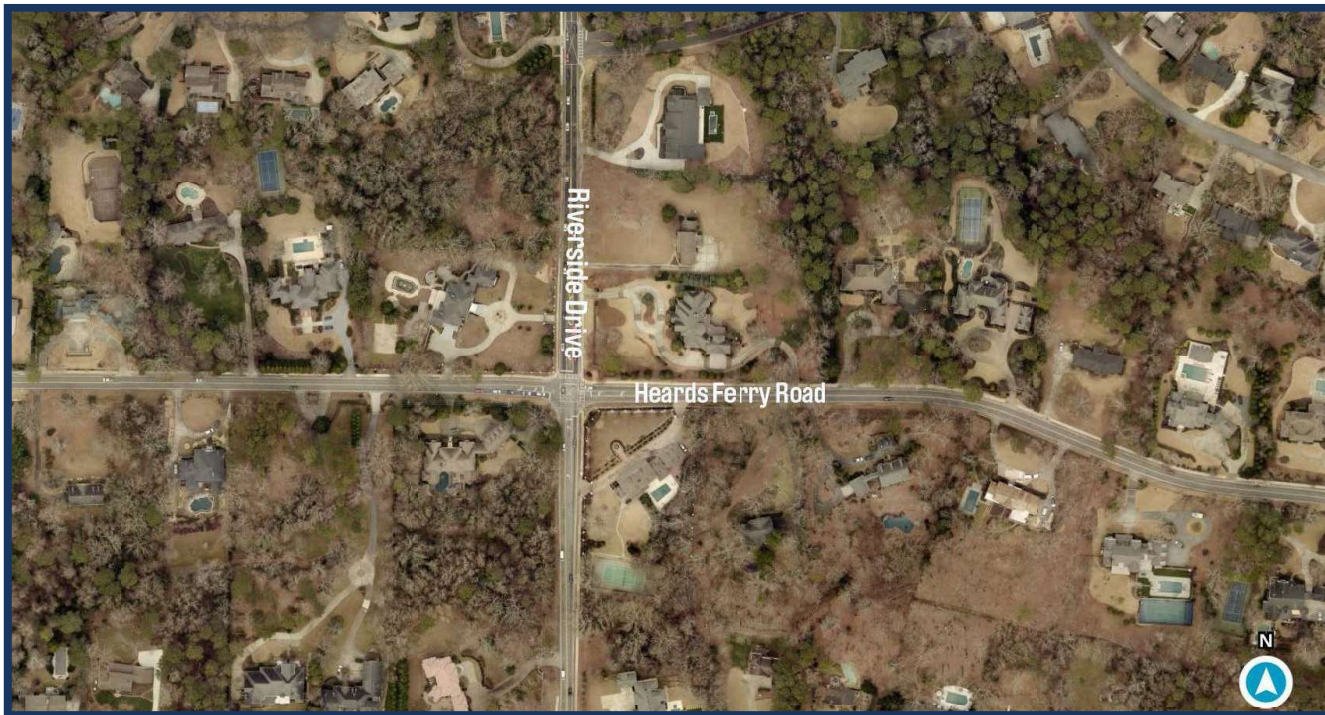
TSPLOST Cost: \$44,600,000



RIVERSIDE DRIVE AT HEARDS FERRY ROAD CORRIDOR IMPROVEMENTS-DESIGN

Improve safety, operations and mobility along Riverside Drive from I-285 to River Valley Drive.

TSPLOST Cost: \$1,500,000



TSPLOST26
renewal

HOLCOMB BRIDGE ROAD MULTI-USE PATH (BETWEEN SPALDING DR. AND THE CHATTAHOOCHEE RIVER)

Multi-use side path along the west side of Holcomb Bridge Road.

TSPLOST Cost: \$4,300,000

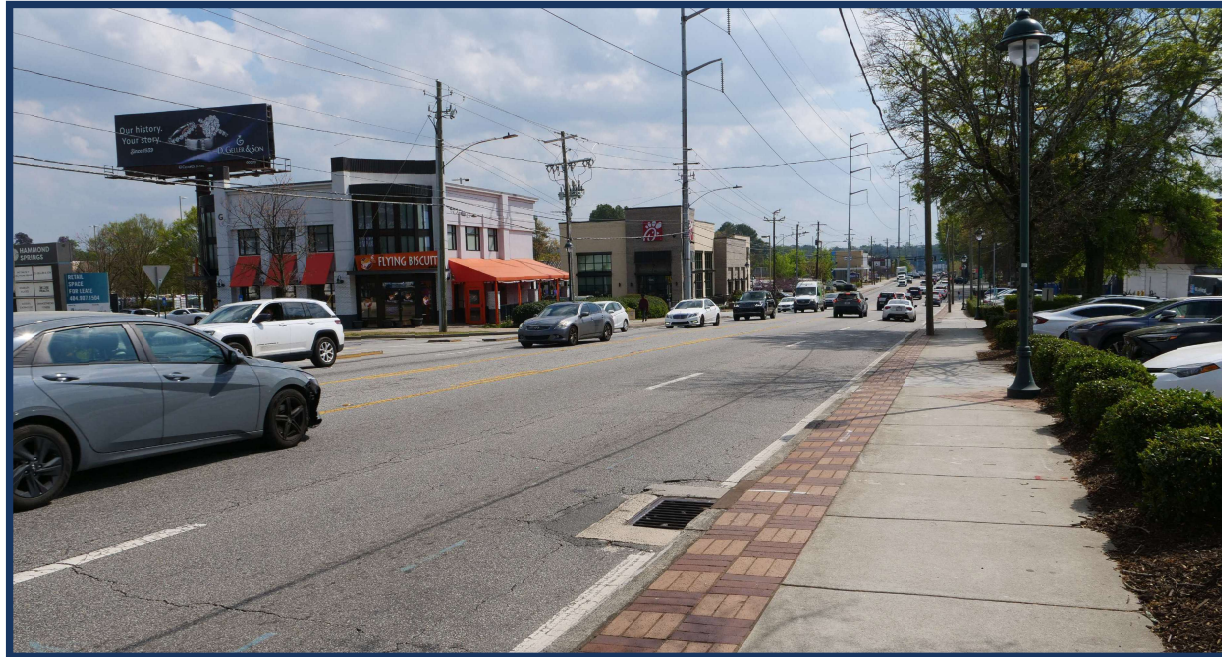


TSPLOST26
renewal

ROSWELL ROAD SAFETY PROJECT CONCEPT DEVELOPMENT AND DESIGN (CARPENTER DRIVE TO HAMMOND DRIVE)

Safety and operational improvements on Roswell Road

TSPLOST Cost: \$4,000,000



TSPLOST26
renewal

PEACHTREE DUNWOODY ROAD CORRIDOR IMPROVEMENTS CONCEPT DEVELOPMENT (MT. VERNON HIGHWAY TO SPALDING DRIVE)

Improve safety, mobility and pedestrian/bicycle access along Peachtree Dunwoody Road from Mt Vernon Highway to Spalding Drive.

TSPLOST Cost: \$2,000,000



TSPLOST26
renewal